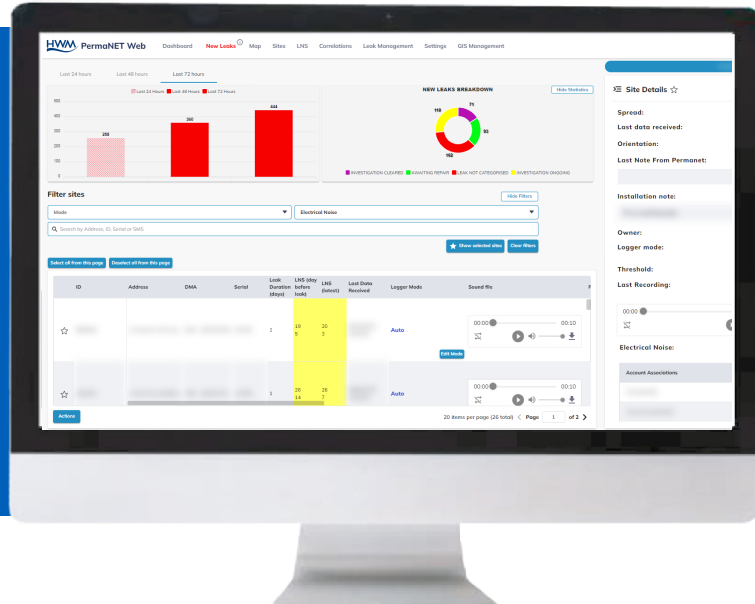


PermaNET Web

Secure Data Analysis Platform

PermaNET Web is our custom-built digital platform for the viewing and analysis of the leak noise data collected by PermaNET and PCorr+ devices.

Accessible on any internet-enable device, PermaNET Web is a secure, easy-to-use platform to support evidence-based decision making.



Key Features and Benefits

- **Two-way communication:** local and remote parameter settings
- **Auto processing:** interference and external noise filtering
- **Dynamic DMA management:** full DMA views available
- **GIS pipe network:** overlay GIS data with Google Maps to provide dynamic location information
- **Electrical Noise identification:** automatically identify and categorise electrical noise using AI algorithms
- **Functionality:** can be used to set system and threshold alarms, as well as monitoring signal and battery levels
- **Threshold Modelling:** target a specific DMA and adjust threshold of deployed loggers within it
- **Compatible:** supported by most major internet browsers and compatible with PermaNET and PCorr+ devices
- **Noise filtering:** auto-processing for equalisation and frequency correlation display and coherence
- **Audio data recording:** audio data is sent to the server if a leak is present
- **Data security:** multiple security features including firewall, individual logins and locational access
- **Stores historic data:** ability to compare current data with historic data
- **Variable sampling:** device sampling times can be changed remotely through PermaNET Web



All images, text and designs are protected by international and UK copyright law and remain the property of HWM Global. It is against the law to copy or use any of the content from the HWM Global website or literature without the written consent of HWM Global. HWM-Water Ltd. reserve the right to vary the specification.



HWM Global

Ty Coch House
Llantarnam Park Way
Cwmbran
NP44 3AW
United Kingdom

Tel: +44 (0) 1633 489 479
Email: sales@hwmglobal.com
Web: www.hwmglobal.com

MONITORING ASSETS, DELIVERING DATA, BRINGING CONTROL