

Pegasus +

Pressure control system

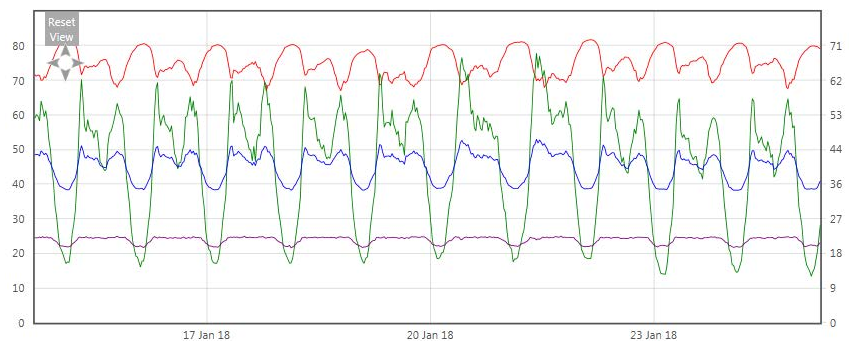
Pegasus+ is a sophisticated and highly versatile solution for pressure control with integral 2 way GPRS communications.

The Pegasus+ has the capability to set target pressures by time, flow or a combination with different table settings per day of the week. With the addition of a critical point data logger it can automatically analyse and calculate the network conditions to maintain a stable pressure at the critical point to fully optimise a PRV zone. Resulting benefits help reduce demand and leakage levels, whilst at the same time calming the network reducing burst frequency.



Key Features and Benefits

- **Intelligent pressure control:** Proven to minimise leakage and reduce the frequency of pipe bursts.
- **Modulated control:** Gives great flexibility to modulate pressure according to demand throughout the day, changes being made remotely.
- **Multi-point time based PRV:** Control without flowmeter 96 values per day, 7 days a week.
- **Pressure failsafe:** Set by user on installation, including manual safe override on site.
- **Flexible:** 3G version available, additional external battery packs enable high frequency data calling.
- **Latching solenoids:** Optional feature to fully vent the PRV top chamber in tight headloss conditions
- **Integrated low cost GPRS:** Enables rapid (almost real- time) monitoring and remote control as required.
- **Secondary logging channel:** Enables one second fast logging for analysis of events along with Pseudo logging and transient captures.
- **Additional logging channel:** Optional 4th logging channel to record top chamber PRV pressure.
- **Tablet or PC based App:** Allows easy set up and programming functionality.



Applications

Pegasus+ uses a Tablet or PC based IDT App for easy set up and programming, and is compatible with the HWM Online web viewer for easy and convenient access to data via the internet.

In addition, Pressview web based software provides location fleet mapping, intallation photos, graphing, remote table control, alarm setting and maintenance alerting. Individual user login fingerprints any changes made on the operation of the Pegasus+ making any actions fully accountable and historically registered.

MONITORING ASSETS, DELIVERING DATA, BRINGING CONTROL

Pegasus +

Pressure control system

Sensor Input Options

2x Digital	2x Uni- or bi-directional pulse. Count or Event Logging modes
2x Analogue inputs (additional third channel available on request)	Internal Pressure Transducer. 0-20 bar / 0-200 metres head / 0-300 psig, accuracy $\pm 0.1\%$ External Pressure Transducer (volt) or Transmitter (mA). 0-20 bar / 0-200 metres head / 0-300 psig, accuracy $\pm 0.1\%$ - Option 4-20mA from isolated sensor, or 0-1v, 1-5v, or 0-100mV.olt.
3 x Solenoid Outputs	1x Latching Solenoid, to vent or close the top PRV chamber. 2x Pulsed Solenoid outputs, up/ down control. Safe levels and alerts set to protect battery depletion.

Communications

GPRS	Can upload data to customer's FTP site or HWMs proprietary UDP mode for low data cost and improved comms reliability in marginal signal areas (requires HWM Data Gate connection or HWM software to be installed on customer's system).3G Compatible modem supporting 850,900,1900,2100
Serial	RS232 or USB interface for programming and interrogation with PC/Laptop or PDA/Tablet using IDT software. Programmable up to 19,200 b.p.s
PSTN	Optional integral PSTN modem



All Images, text and designs are protected by international and UK copyright law, and remain the property of HWM. It is against the law to copy or use any of the content from HWM website or literature without the written consent of HWM. HWM Water Ltd. reserve the right to vary the specification. **Issue 1. 06:2017**

Controlling Features

Summer/Winter	Clock is programmable for seasonal time changes (if applicable)
Time Based Control	Up to 96 table entries for 7 individual days per week or setting based on Week Days or Weekends. Calendar special event table also available.
Flow Based Control	Flow based control , or Flow override option
Fail Safe	Default Fail Safe can be configured to "Set" or "Release" the latching solenoid upon error (e.g. faulty sensor / No flow)or revert to time profiles if flow fails or revert to fixed pressure (operator selected).

Logger Features

Frequency	1 – 59 seconds, 1 – 59 minutes, 1 – 24 hours settings independent for primary and secondary channel.
Logger ID	Up to 8 alphanumeric characters
Site ID	Up to 127 alphanumeric characters.
Clock	On board 24 hour real time clock with date facility.
Ingress protection	IP68 fully submersible
Dimensions	315H x 153W x 87D mm (12.4"H x 6.0"W x 3.4"D).
Construction	Aluminium alloy casing.
Weight	Approx 3.5kg
Operating Temp	-20 to +70°C (-5 to +160°F)
Ingress protection	IP68 submersible
Power	Lithium-thionyl chloride cell operational for 5 years under typical operating conditions
Alarms	16 Alarms per logger. Each with 16 character comment field. Can auto dial up to 16 telephone numbers, 1 per alarm. Threshold and profile alarms.
Memory	Primary recording 179,760 readings. (Cyclic or Block).

HWM Water Limited

Ty Coch House
Llantarnam Park Way
Cwmbran
NP44 3AW
United Kingdom

Tel: +44 (0) 1633 489 479
Fax: +44 (0) 1633 877 857
Email: sales@hwm-water.com

MONITORING ASSETS, DELIVERING DATA, BRINGING CONTROL

www.hwmglobal.com