



Ref: FAQ0297

Version: 1.0

Title – Pulse v Event mode logging

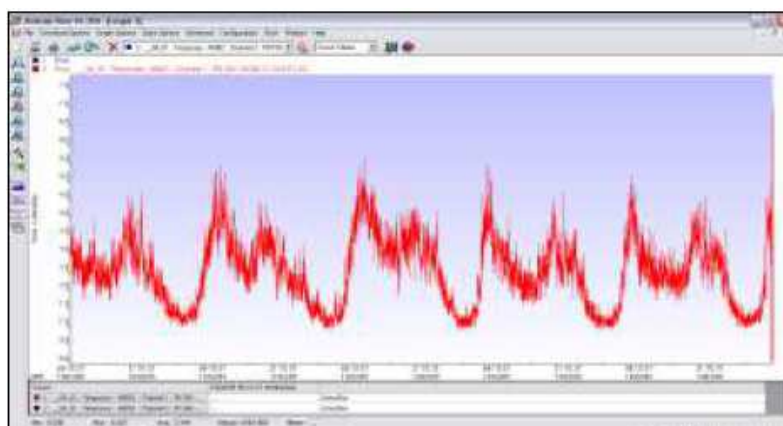
Made By: AB 15/01/16

(Issue 2)

Pulse versus Event logging

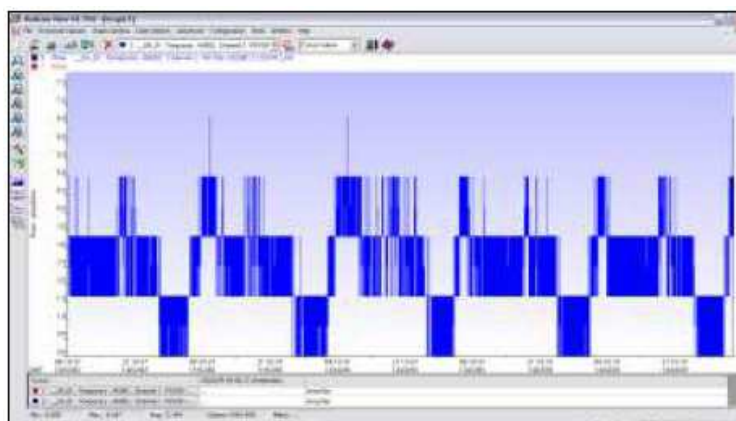
Radcom loggers can be configured in **Pulse** or **Event** mode

Pulse mode is the default mode used in 99% of cases when measuring flow. This mode averages the number of pulses received over the logging period and logs the resultant value. In most circumstances this gives clear graphical flow data:-



Event Mode is an optional mode used where the pulse rate is very low and uneven with respect to time. It can be used on large meters with low flows where you may not get a pulse for several logging periods.

In this mode the logger records the first pulse and the elapsed time until the next pulse is received. This avoids the 'blocking' graph view (as below) which is seen when there is less than a single pulse per time period.



Document History:

Edition	Date of Issue	Modification	Notes
1st	21/09/15	Release	
2nd	15/01/16	Description modified	