



Ref: FAQ0403

Version: 1.0

Title – Setting up HWM tablet software

Made By: AB 09/05/17

(Issue 1)

Setting up a Tablet with PermaNet+, IDT & Radwin software

PermaNet + software for use with PCORR +

Open PermaNet+ software

Go to Set Up > Options > apply the password **admin**

Then tick the following boxes in each of the tabs -

Options

File

Functions | Lift + Shift Options | Change Administrator Password | Other Options

Select Permitted Functions and Options

- ☒ Patrol
- ☒ Fast Patrol
 - ☒ Allow export of all patrol data
 - ☒ Allow export of current data only
- ☒ DMA Management
 - ☒ Import DMA structure ONLY
(No patrol data will be read)
- ☒ Deploy
 - ☒ Allow deletion of loggers
- ☒ Data Analysis
 - ☒ Allow data editing + logger deletion
- ☒ History
 - ☒ Add history to database
 - ☒ Erase history after download
- ☒ Lift + Shift
- ☒ Aqualog
 - ☒ Allow deletion of graphs
- ☒ P+ Setup
 - Timezone = CPU + 0
- ☒ Patroller Setup
- ☒ Connections
- ☒ Backup / Restore
- ☒ Modem Functions
- ☒ Maps

OK Cancel



Ref: FAQ0403

Version: 1.0

Title – Setting up HWM tablet software

Made By: AB 09/05/17

(Issue 1)

Options

File

Functions | **Lift + Shift Options** | Change Administrator Password | Other Options

☒ Clear all leak data after Lift

☐ Put loggers to sleep after Lift

☒ Export patrol data only for current day

Export Folder : C:\HWM\PermaNetPlus\Database\Export\ ...

☒ Use Auto-Increment in Shift screen

☒ Use Lift + Shift timestamps

☐ Setup Loggers after Lift

Return to Functions Screen ...

OK Cancel

Options

File

Functions | Lift + Shift Options | **Other Options** | Change Administrator Password

☒ Allow loggers to be in multiple DMAs

☐ Erase leak history when DMA is changed

Derive leak status from level & spread

Ref Number format 10041234

Show only serial number in logger lists

☒ Export GPS Co-ordinates in Address2 field in CSV files

Patrol Datagate manually only

Folder for PermaNet+ files
C:\HWM\PermaNetPlus\Data\ ...

Maps URL
http://maps.google.com

Upload to email server

Username for data upload

URL for data upload
https://hwmonline.com/api/

OK Cancel

Then select 'OK' to close and save the settings



Ref: FAQ0403

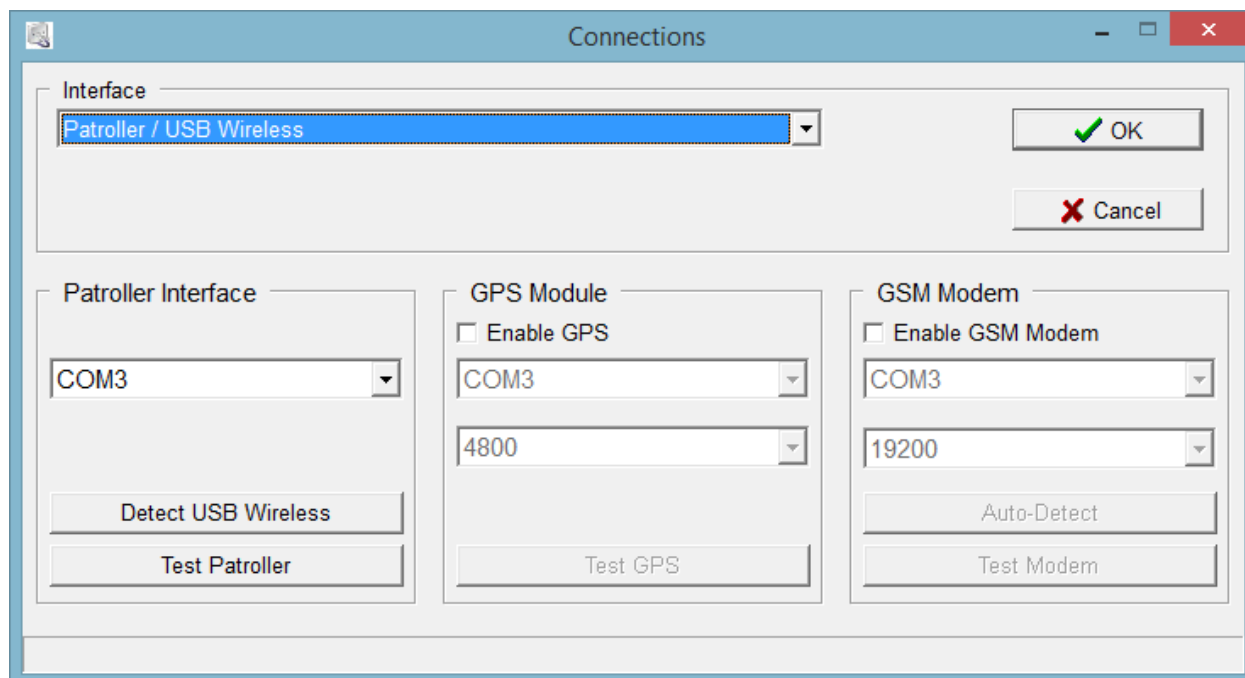
Version: 1.0

Title – Setting up HWM tablet software

Made By: AB 09/05/17

(Issue 1)

Next go to the 'Connections' Icon



Select Patroller/ USB wireless from the Interface drop down

Plug in your USB Transceiver into a USB port and select the Patroller Interface COM port number it is located on. (use Detect USB wireless)

Select Test Patroller to ensure it is correctly working.(it will say on the bottom line)

Plug in your GPS module into a spare USB port.

Tick the enable GPS box and select the GPS Module COM port number it is located on.(use Device manager to find this if it is not evident)

Select Test GPS to ensure it is picking up a satellite ok (GPS coordinates will appear in the bottom line).

IDT Software – for use configuring HWM Dataloggers for Datagate

If you are installing the software ensure the correct comms drivers are installed as well.

Double click on the IDT software icon to open the software

Plug in your logger comms cable (RAG R10 USB IR reader or other logger Comms cable) and connect your data logger.

In IDT software select 'Read Device' – the logger will be read by the software so that you can now configure it.



Ref: FAQ0403

Version: 1.0

Title – Setting up HWM tablet software

Made By: AB 09/05/17

(Issue 1)

Radwin Software – for configuring HWM Dataloggers

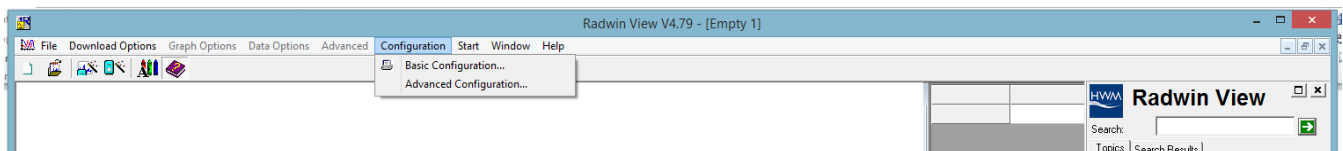
If you are installing the software ensure the correct comms drivers are installed as well.

Double click on Radwin View icon to open a blank 'View' Screen

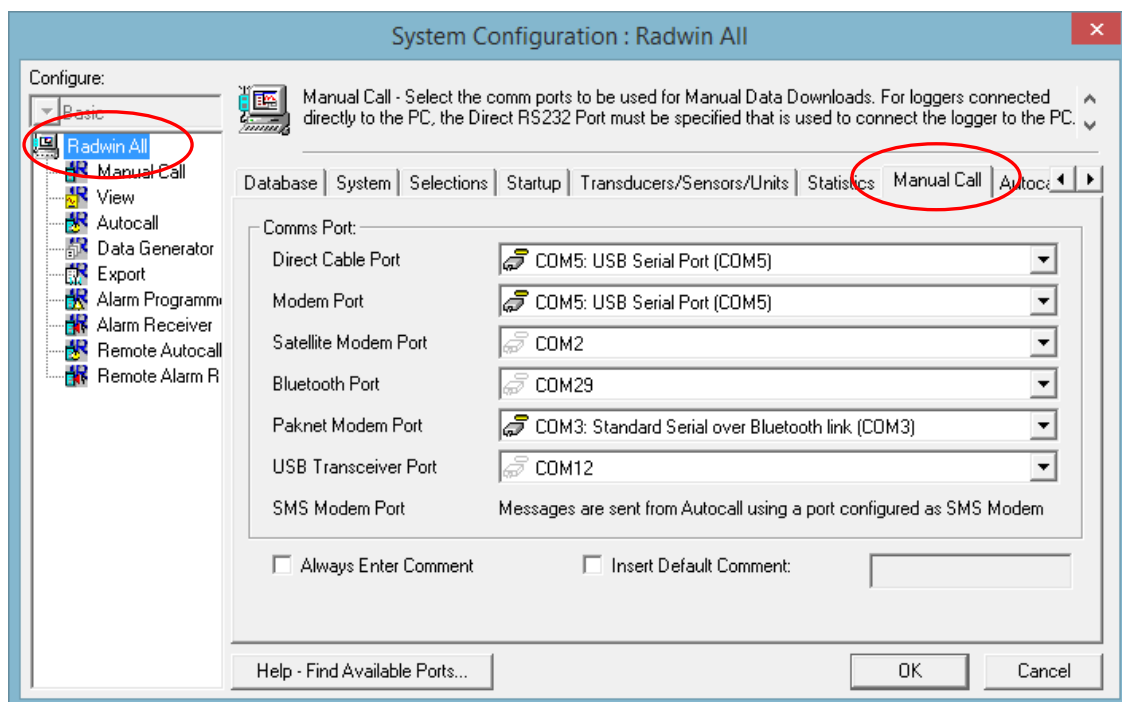
If this is a first time use, accept the database set up instructions.

Plug in your logger comms cable (RAG R10 USB IR reader or other logger Comms cable) and connect your data logger.

Now from the View Screen select Configuration > Basic configuration -



Then select Radwin All and the Manual Call tab



In the Comms Port table go to the 'Direct cable Port' drop down and scroll through until you find the one which is illuminated with a grey /yellow icon and select that.

Now select OK to save this to the software. You should now be ready to use your tablet.

Document History:

Edition	Date of Issue	Modification	Notes
1st	09/05/17	Release	