



Ref: FAQ0299

Version: 1.0

Title- ControlMate – how to reset

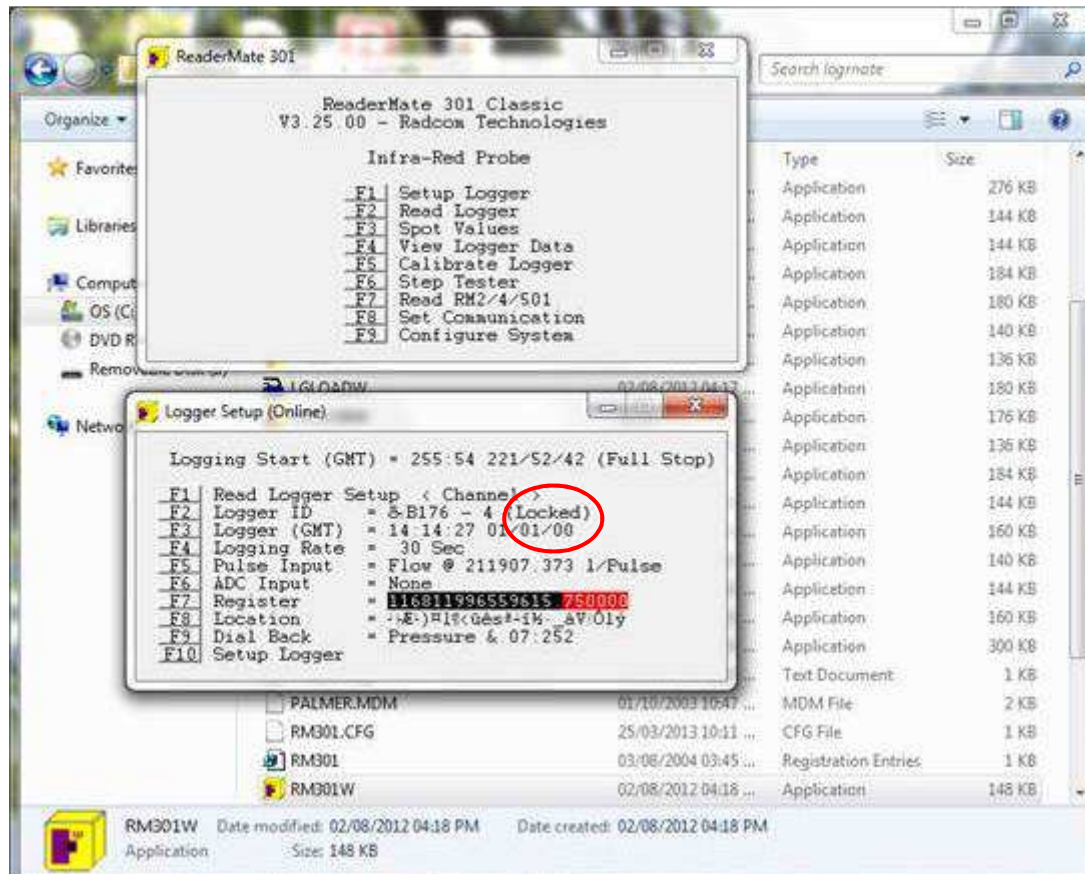
Made By: AB 22/09/15

(Issue 2)

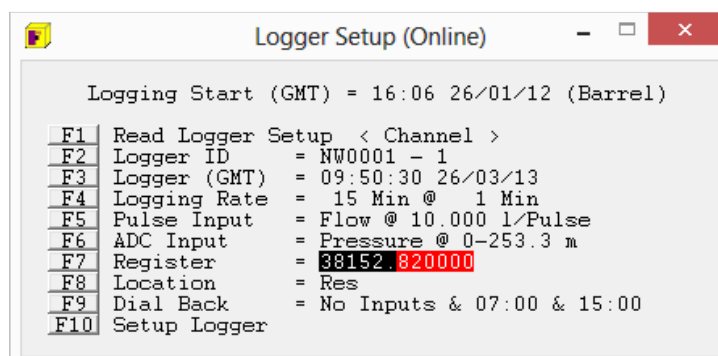
ControlMate and FM – how to reset back to factory default settings

In the screen shot below notice that at F2 logger ID says “locked”

If you follow the procedure below it will unlock the logger and return it to its factory default settings.



If you select F1 and change the Channel to Channel 1 (Logger ID = NW0001-1) as below –



and then select F8 and type in XXXNW (in capitals) -



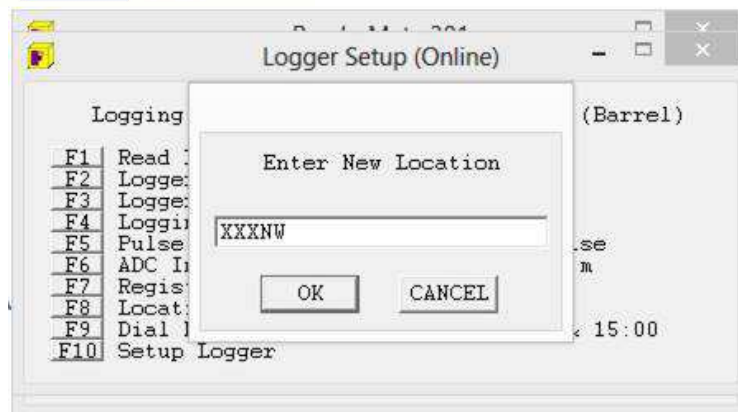
Ref: FAQ0299

Version: 1.0

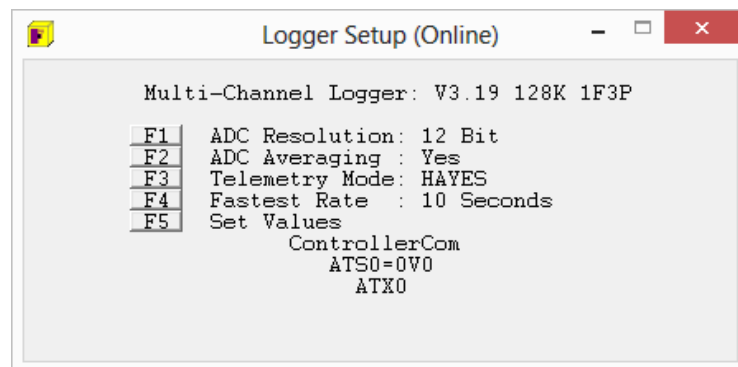
Title- ControlMate – how to reset

Made By: AB 22/09/15

(Issue 2)

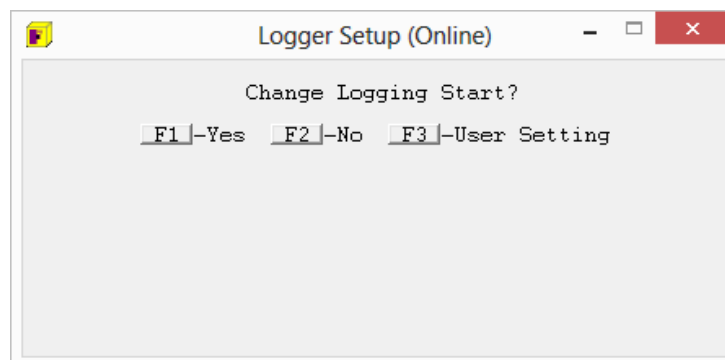


Then 'OK'



Then F5 Set Values

Then F10 Set Up logger



Then F2 – No

It should now be unlocked and ready for you to configure -



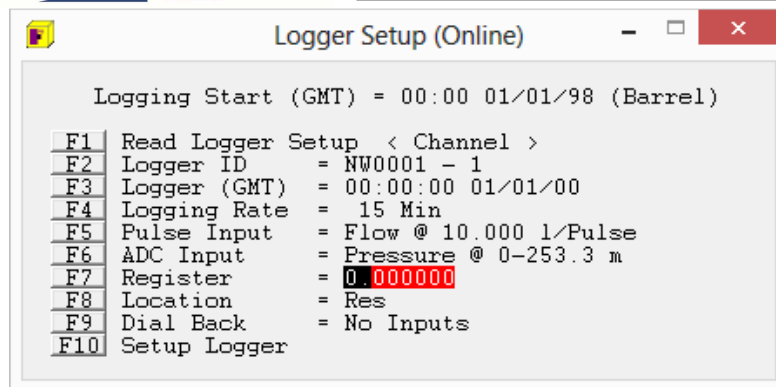
Ref: FAQ0299

Version: 1.0

Title- ControlMate – how to reset

Made By: AB 22/09/15

(Issue 2)



Note – you will need to reset the time and date (F3)

Document History:

Edition	Date of Issue	Modification	Notes
1st	26/03/13	Release	
2nd	22/09/15	Format update	