



Ref: FAQ0345

Version: 1.0

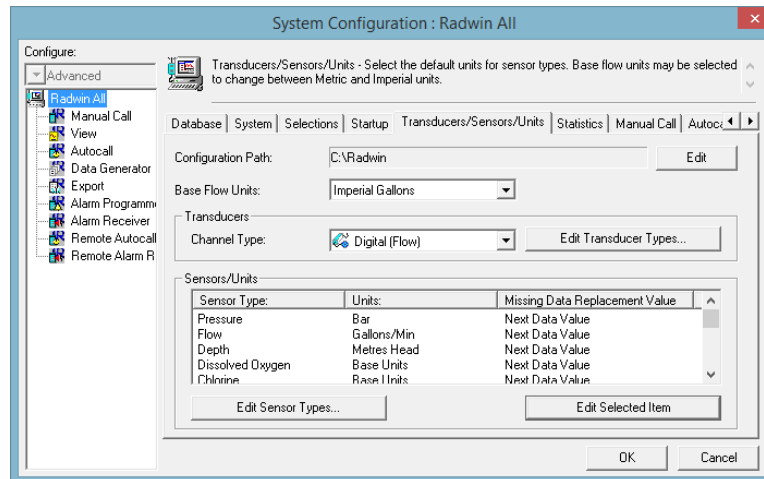
Title – Imperial units

Made By: AB 09/11/15

(Issue 1)

## Configuring a Logger / Datagate / Radwin system to Imperial units

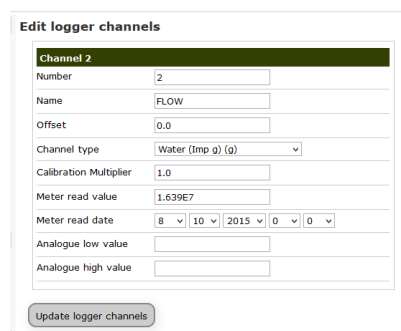
Set the logger up using Radwin configuration of base unit flow set to Gallons / minute.



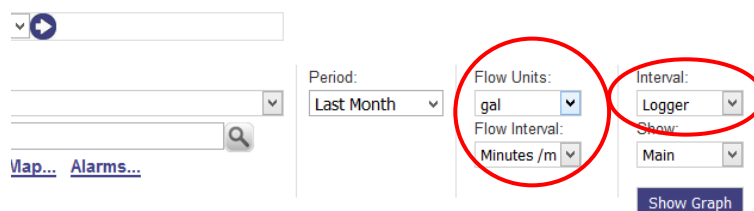
Note the Cal value of gallons per pulse that the meter is outputting (say for example 10)

In Datagate set the channel for the logger to Water Gallons (for imperial gallons)

Set the cal value in the channel to 1.0



In HWMO ensure you have set the viewing options to 'Gallons', 'minutes' and the sample interval to 'Logger'





Ref: FAQ0345

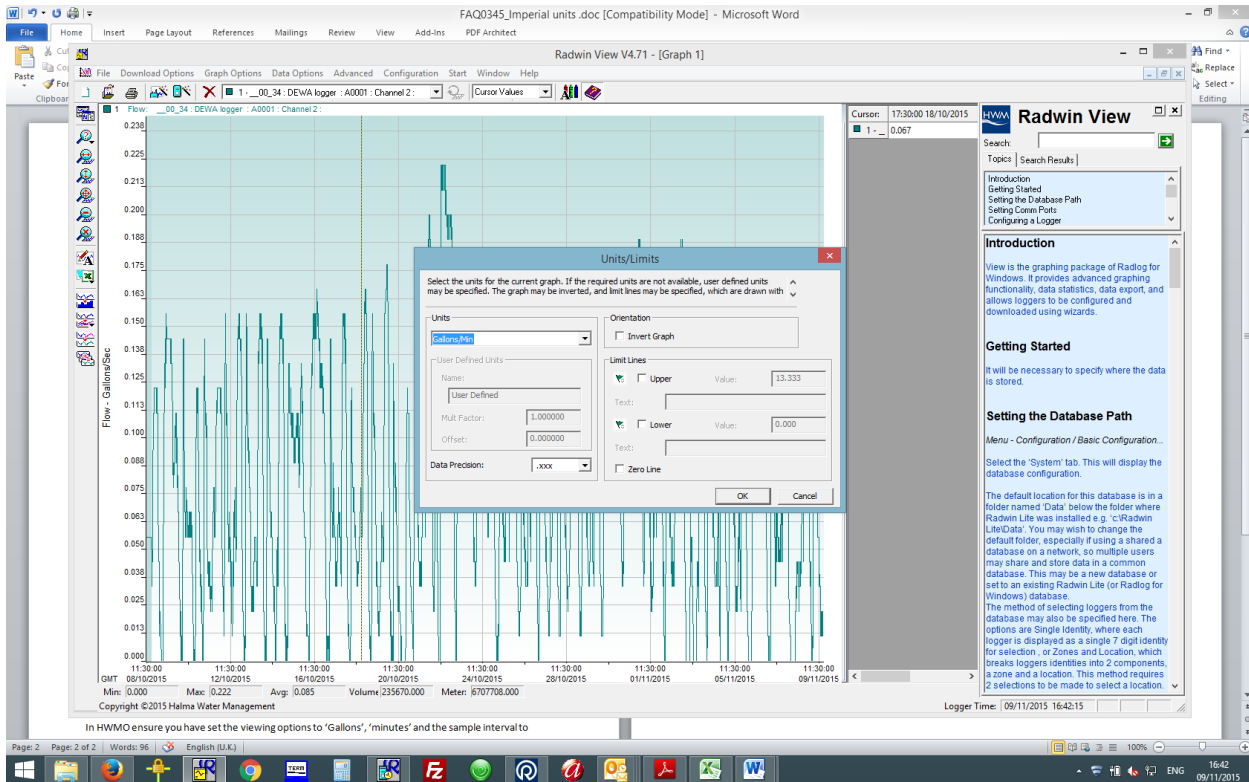
Version: 1.0

Title – Imperial units

Made By: AB 09/11/15

(Issue 1)

In Radwin when you are viewing the data graph ensure the Data Options > Units & Limits are set to Gallons per Min



## Document History:

Edition	Date of Issue	Modification	Notes
1st	28/01/15	Release	



**Ref: FAQ0345**

**Version: 1.0**

**Title – Imperial units**

**Made By: AB 09/11/15**

**(Issue 1)**