



Ref: FAQ0089

Version: 1.0

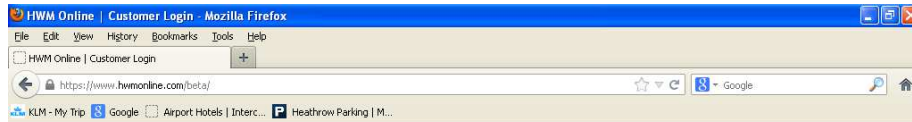
Title – HWMO Fleet report generation

Made By: AB 12/05/15

(Issue 1)

## Question – How can you create fleet report Http requests from HWM Online for specific time periods

Go to [www.hwmonline.com](http://www.hwmonline.com)



Log in using your Username and Password

Identify one logger in the fleet and open the graph –



Using the 'Period' drop downs and select the dates between which you require the data and select 'Graph' to give the view of the period.



Ref: FAQ0089

Version: 1.0

Title – HWMO Fleet report generation

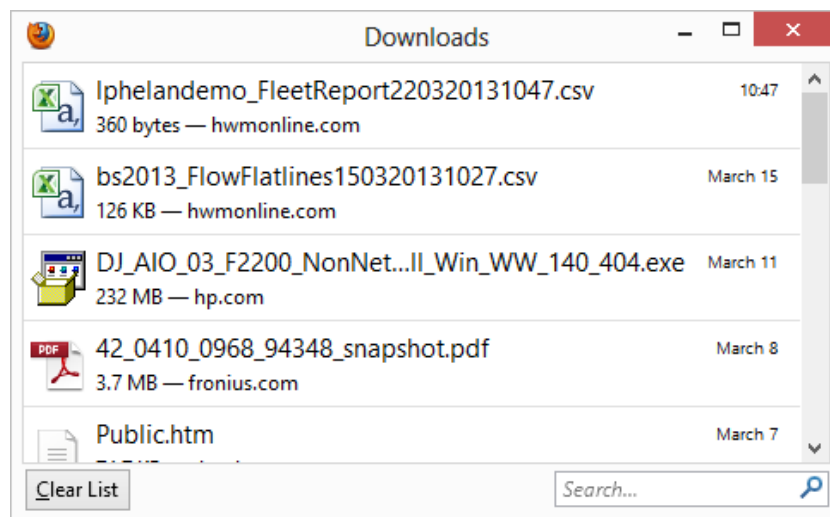
Made By: AB 12/05/15

(Issue 1)



Select 'Save as CSV' at the bottom of the Graph.

Click 'OK' to 'Save file'



In the "Downloads" you will see the saved .csv



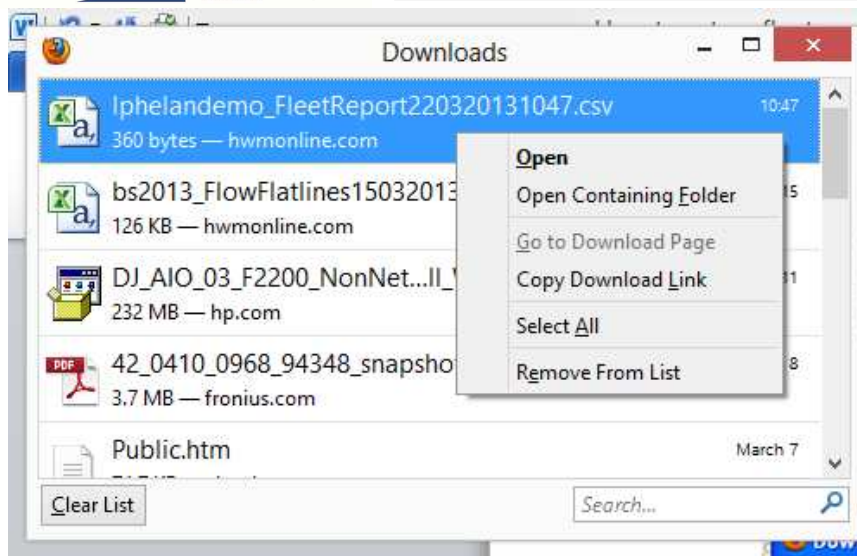
Ref: FAQ0089

Version: 1.0

Title – HWMO Fleet report generation

Made By: AB 12/05/15

(Issue 1)



Right-click and choose “Copy Download Link”

Paste the link and use this as the http request – change the logger serial number in the link to the word ‘all’

<https://www.hwmonline.com/hwmcargi.cgi?sessionid=89bc51557e008b008b0000008f2d&user=Unitywater&logger=43286&startdate=2014-05-12+00:00&enddate=2015-05-12+00:00&flowunits=1&pressureunits=1&flowinterval=0&interval=0&export=csv>

<https://www.hwmonline.com/hwmcargi.cgi?sessionid=89bc51557e008b008b0000008f2d&user=Unitywater&logger=all&startdate=2014-05-12+00:00&enddate=2015-05-12+00:00&flowunits=1&pressureunits=1&flowinterval=0&interval=0&export=csv>

Copy and paste this into your web browser and select ‘search’

This will create a .csv file for all your logger fleet over the time period

Please be aware that this could be a very large file so will take time to generate and maybe too big for your PC to handle. You may need to select shorter time periods.

#### Document History:

Edition	Date of Issue	Modification	Notes
1st	12/05/15	Release	