



Ref: FAQ0420

Version: 1.0

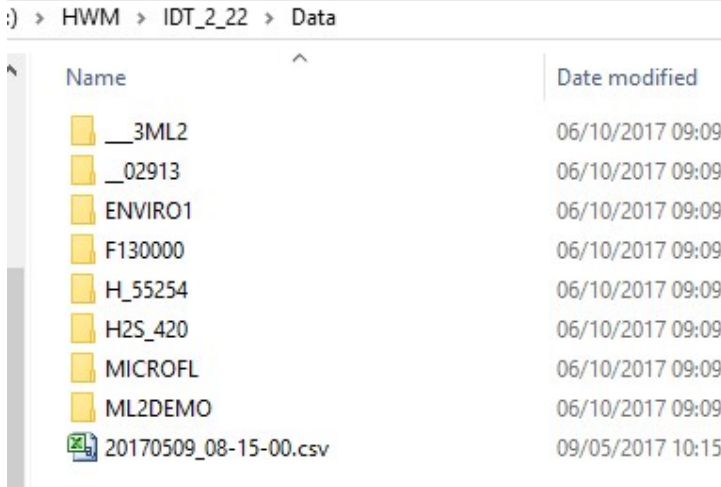
Title – IDT Improved graphing

Made By: AB 31/10/17

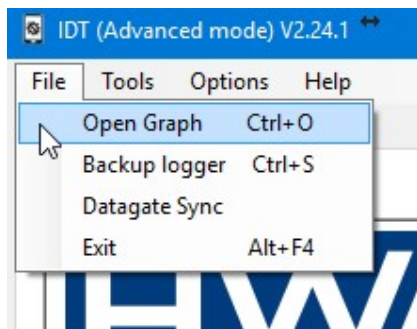
(Issue 1)

IDT Configuration software – how to view the graphs

All data is stored in a similar way to Radwin. In your IDT/Data folder you will see a folder structure based on the Logger ID. (See my example below)



In each sub folder is a set of “.udat” files (Generation 2 loggers) or “.gdat” (Gen 1 loggers). These files contain the graph data and channel info, so when you open a file :



the IDT will load the graph data and channel configuration, for the data that was downloaded when you click the “Download Data” button.



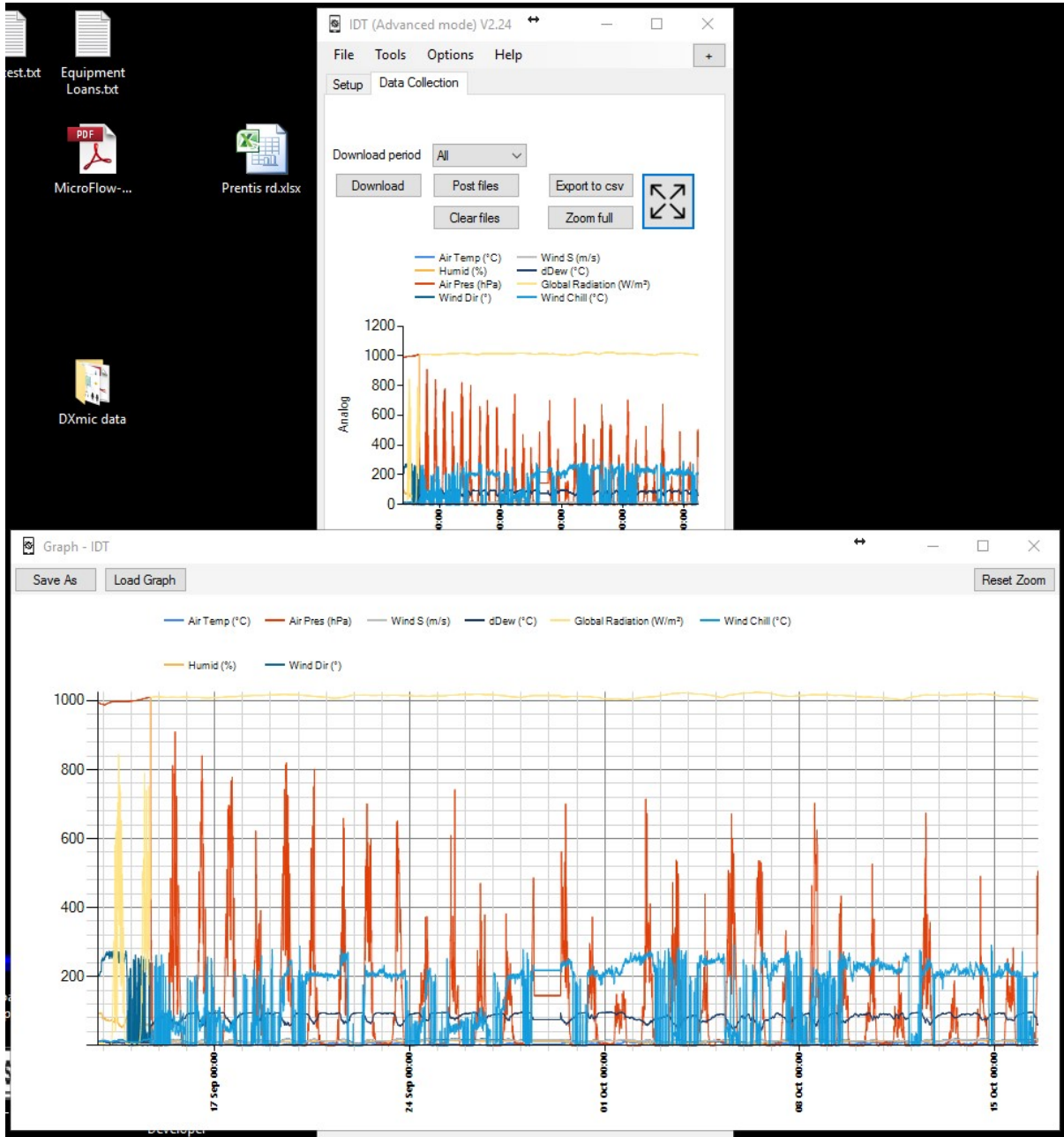
Ref: FAQ0420

Version: 1.0

Title – IDT Improved graphing

Made By: AB 31/10/17

(Issue 1)



Document History:

Edition	Date of Issue	Modification	Notes
1st	15/01/18	Release	