



Ref: FAQ0216

Version: 1.0

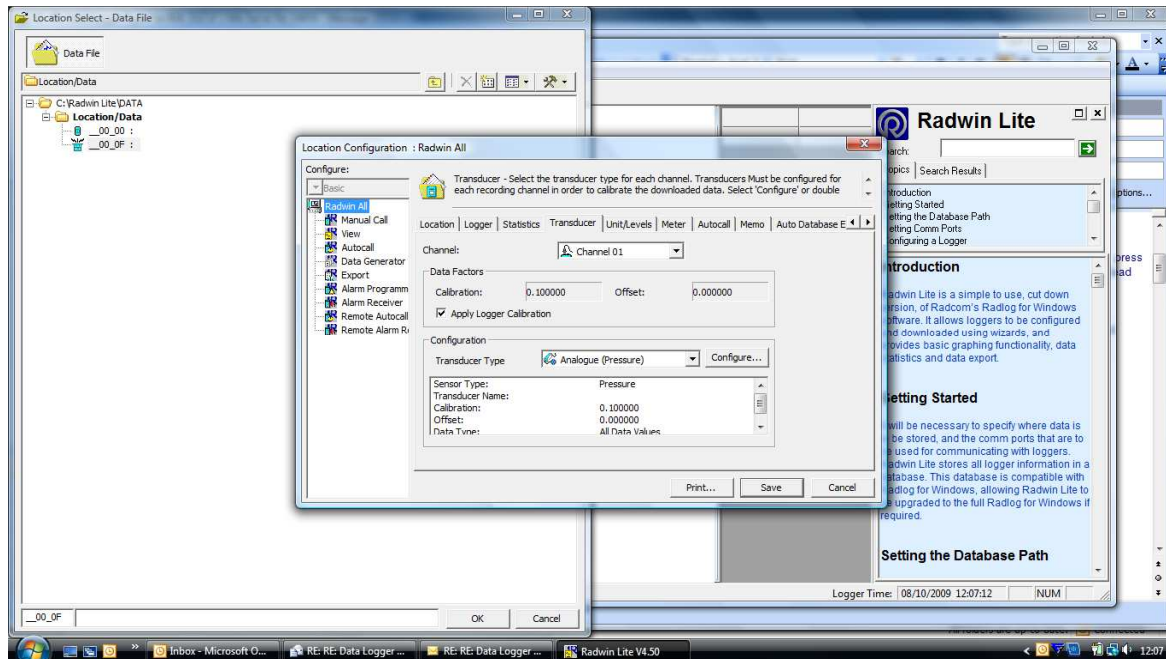
Title – LoLog – how to change SG value

Made By: AB 18/09/15

(Issue 2)

How can the water SG value in Transducer settings can be changed

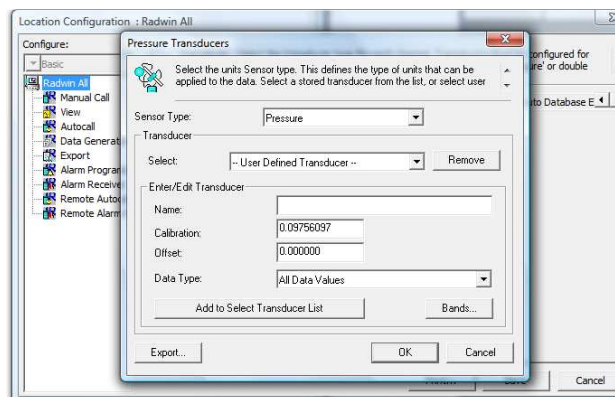
In the Radwin Database locate the logger and its location configuration –



The illustration above is reading in metres of H₂O and the Calibration value is 0.10000.

To change from fresh water (SG=1) to Sea Water (SG= 1.025) where the Sea water is of a higher density we need to apply a multiplication factor which is the inverse of the SG. e.g:-

Calibration is 0.1 with SG = 1 to give units in meters assuming raw readings are in decimeters.
When SG = 1.025 Calibration = $0.1 * (1/1.025) = 0.09756$



Document History:

Edition	Date of Issue	Modification	Notes
1st	04/01/13	Release	
2nd	17/09/15	Format update	