



Ref: FAQ0079

Version: 1.0

Title – Logger Call in setting

Made By: AB 28/01/15

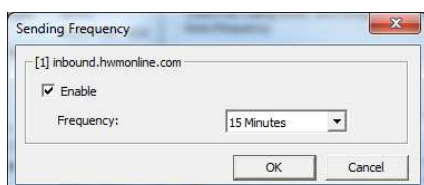
(Issue 1)

How to configure the logger call in options to suit your requirements

During the configuration of the datalogger you will be presented with options for how you want to configure the logger to call in its data

Call Time Modes

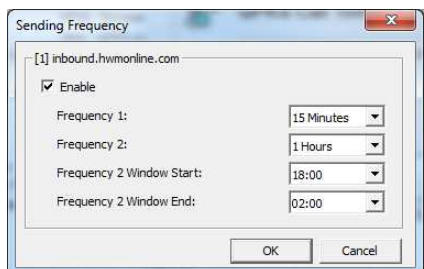
- i. “Call Frequency” mode (Factory Default – 12hrs, 2 calls/day)
In this mode you simply specify how many minutes pass before making the next data call.



Choose your desired frequency from every:
5 minutes (480 calls/day) to
12 hours (2 calls/day)
then click <<OK>> to store

Note: Maximum is 3 calls/day without an external battery.

- ii. “Dual Call Frequency” mode allows you to specify 2 different call in rates for 2 different time periods of the day. E.g. a lower rate during the night.



Choose your desired main frequency (as above).

Then choose the secondary frequency.

Next choose the time that the secondary rate will start.

Finally choose the time when the secondary rate will stop. Click <<OK>> to store.

In this example the logger will send in data every 15 minutes during the day but only once per hour between 18:00 and 02:00 in the night. This helps to reduce data costs.



Ref: FAQ0079

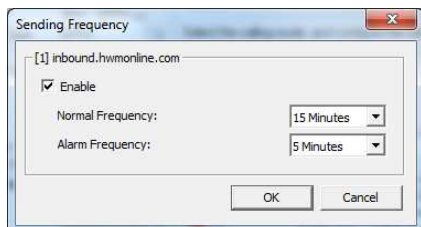
Version: 1.0

Title – Logger Call in setting

Made By: AB 28/01/15

(Issue 1)

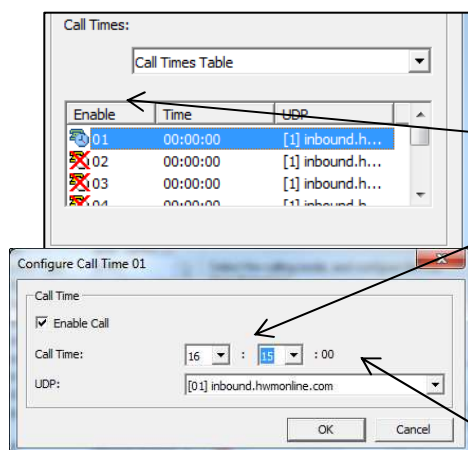
- iii. “Dual Alarm” mode allows you to set a different call in rate whilst a logger is in an alarm condition.



Choose the normal frequency and then specify the frequency during the alarm condition. Then click <<OK>> to store.

In this example the logger will call in every 5 minutes if an alarm is configured in the logger.

- iv. “Call Table” mode allows you to specify up to 8 individual call in times.



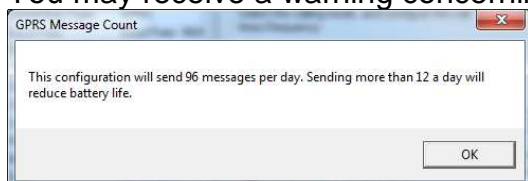
First double click the <<Timer Event>> you wish to adjust from the table

then enter the time that you wish the time that you wish the logger to call in.

If you have more than one address to send data to (step **Error! Reference source not found.** above), select the destination address here.

Click <<OK>> to store.

You may receive a warning concerning battery life:-



Click <<OK>> to continue.



Note: Some Call Time Modes are only supported with the connection of an external battery (or power supply).

Document History:

Edition	Date of Issue	Modification	Notes
1st	28/01/15	Release	