



Ref: FAQ0328

Version: 1.0

Title –Pressure Controllers - alarms

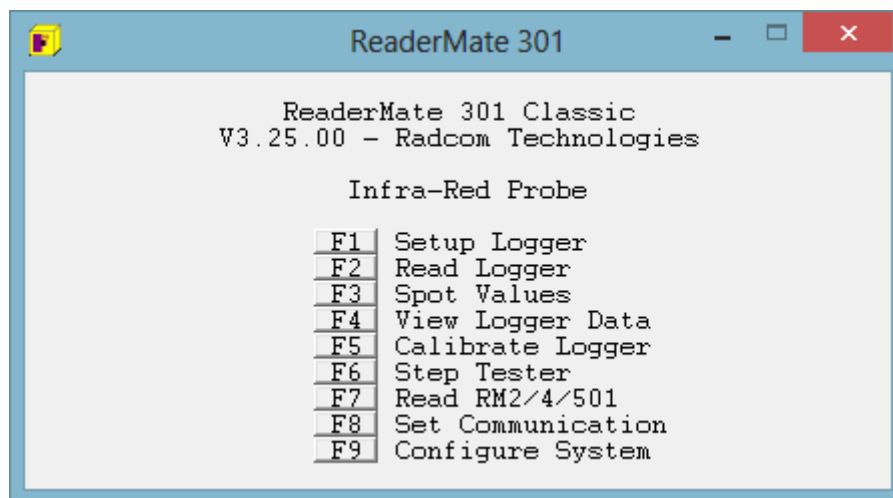
Made By: AB 22/09/15

(Issue 2)

Pressure Controllers - how to configure sending alarms direct to a mobile phone

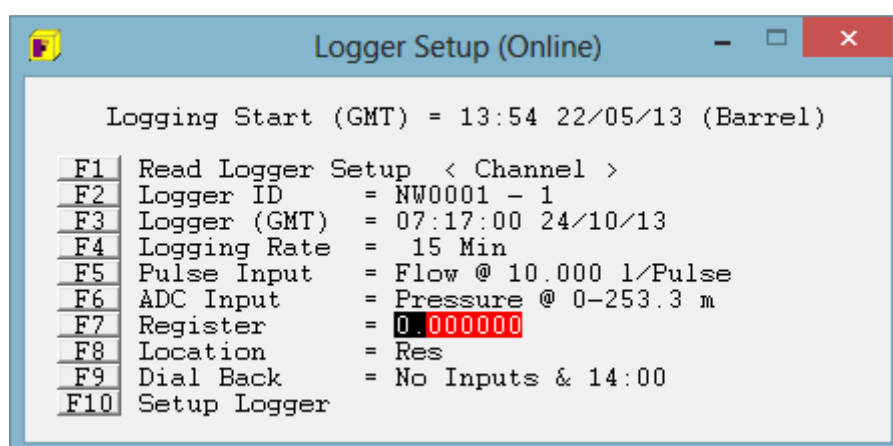
Connect the IR reader to the Controlmate and Open RM301 Software

Select F1 – Set up the logger



Select F9 Dial back

– note below F1 Logger ID is set to Channel 1 – Downstream pressure – so this is the alarm we are first setting





Ref: FAQ0328

Version: 1.0

Title –Pressure Controllers - alarms

Made By: AB 22/09/15

(Issue 2)

Select F1 Alarm Phone number

Logger Alarms		
F1	Alarm Phone Number	:
F2	Flow Alarm	: Off
F3	Duration	: 64:00:00
F4	High	: 0 l/s
F5	Low	: 0 l/s
F6	Pressure Alarm	: Off
F7	Duration	: 64:00:00
F8	High	: -16.7 m
F9	Low	: -16.7 m
F10	Save	

and enter the mobile phone number that the alarm is to be sent to –

Enter Dial Back Phone Number

+447567987545

OK CANCEL

Then select 'OK'

Then by selecting F2 through to F9 create the alarm criteria (ensure the alarms are enabled 'On')

Logger Alarms		
F1	Alarm Phone Number	: +447567987545
F2	Flow Alarm	: On
F3	Duration	: 64:00:00
F4	High	: 1 l/s
F5	Low	: 0 l/s
F6	Pressure Alarm	: On
F7	Duration	: 64:00:00
F8	High	: -15.6 m
F9	Low	: -15.6 m
F10	Save	



Ref: FAQ0328

Version: 1.0

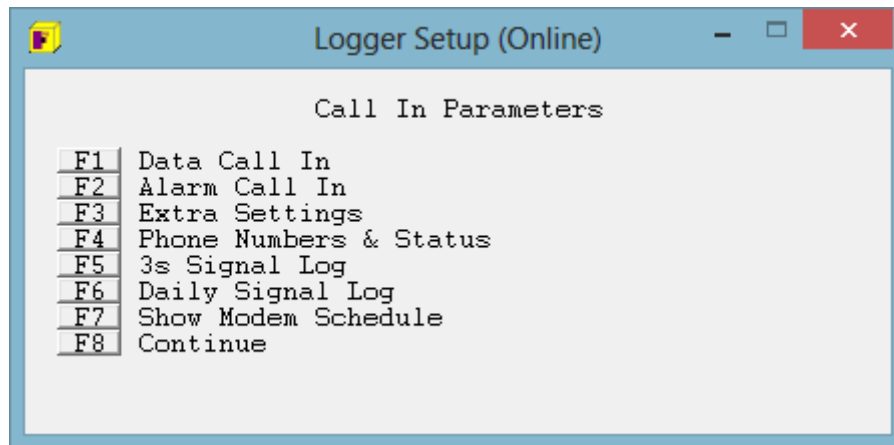
Title –Pressure Controllers - alarms

Made By: AB 22/09/15

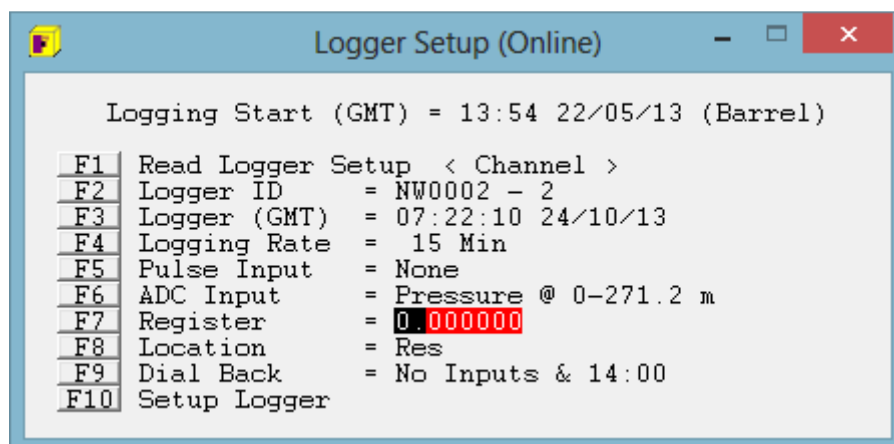
(Issue 2)

Then select F10 to Save

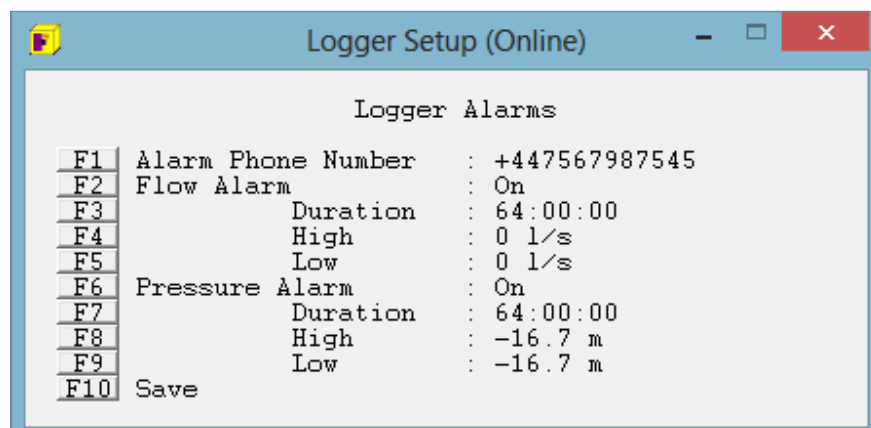
Then select F8 to continue



Then select F1 to change the Channel to Channel 2 (if you want to set alarms on the Upstream pressure and/or Flow)



Repeat the process as per Channel 1 for Channel 2 -





Ref: FAQ0328

Version: 1.0

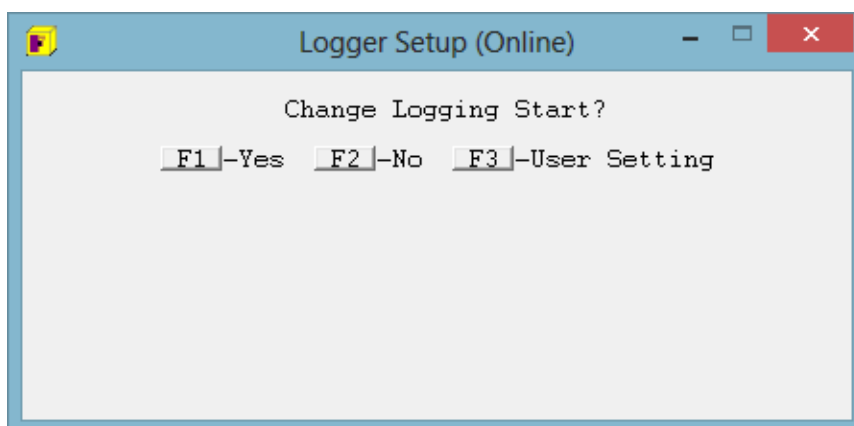
Title –Pressure Controllers - alarms

Made By: AB 22/09/15

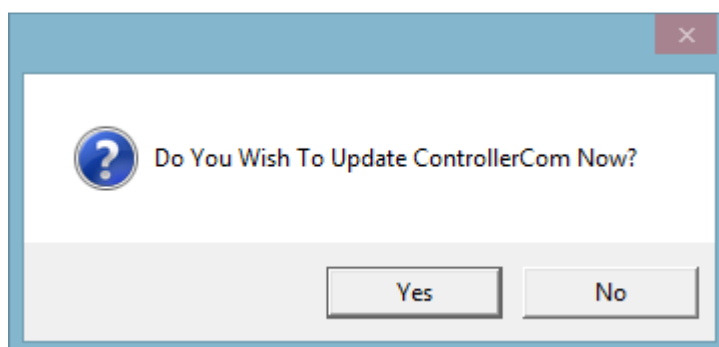
(Issue 2)

Select F10 to Save

When you use “F10 – Setup Logger”, to send the new settings to the Controller, select “F1 – Yes” for “Change Logging Start?”



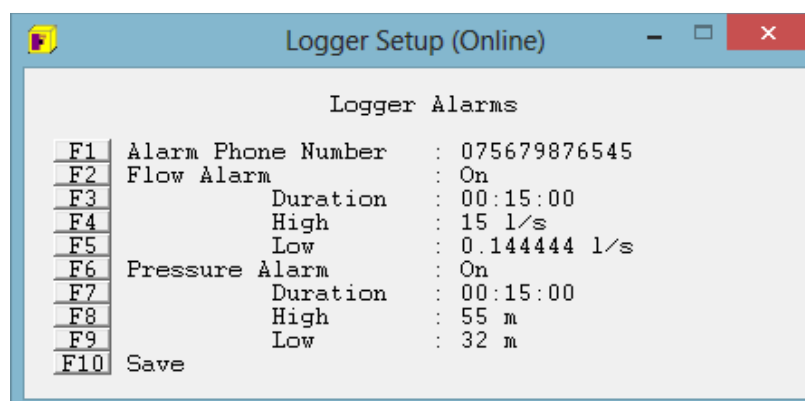
Once the new configuration has been sent to the Controller, you will be prompted as follows:



Select “Yes” and the ControllerCom will read the new Setup from the Controller.

Suggested Alarm Level Settings For A Pressure Controller

The first channel pair of the Controller has Flow and Downstream Pressure:





Ref: FAQ0328

Version: 1.0

Title –Pressure Controllers - alarms

Made By: AB 22/09/15

(Issue 2)

Low Flow Alarm set at 0.5m³/hr (0.15 l/s)

High Flow Alarm set at 10% higher than current max flow in control table

Downstream Low Pressure alarm set at 3m below actuator low setting

Downstream High Pressure alarm set at 3m above actuator high setting

The second channel pair of the Controller has Upstream Pressure:

The screenshot shows a window titled 'Logger Setup (Online)' with a 'Logger Alarms' section. It contains a list of function keys (F1-F10) and their corresponding settings:

Function Key	Setting	Value
F1	Alarm Phone Number	: 075679876545
F2	Flow Alarm	: On
F3	Duration	: 00:15:00
F4	High	: 15 l/s
F5	Low	: 0.144444 l/s
F6	Pressure Alarm	: On
F7	Duration	: 00:15:00
F8	High	: 90 m
F9	Low	: 10 m
F10	Save	

Upstream Low Pressure alarm set at 10m

Upstream High Pressure alarm set at 90m

Remember to set the Alarm Phone Number to the mobile phone number you want to receive the alarms

Document History:

Edition	Date of Issue	Modification	Notes
1st	24/10/13	Release	
2nd	22/09/15	Format update	



Ref: FAQ0328

Version: 1.0

Title –Pressure Controllers - alarms

Made By: AB 22/09/15

(Issue 2)