



Ref: FAQ0318

Version: 1.0

Title-Radcom loggers -reset battery info

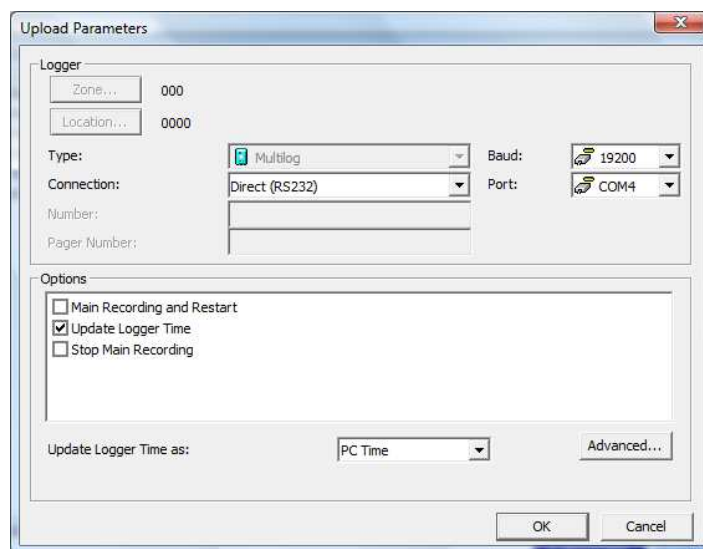
Made By: AB 22/09/15

(Issue 2)

Radcom loggers – how to reset battery information in the logger following a battery change.

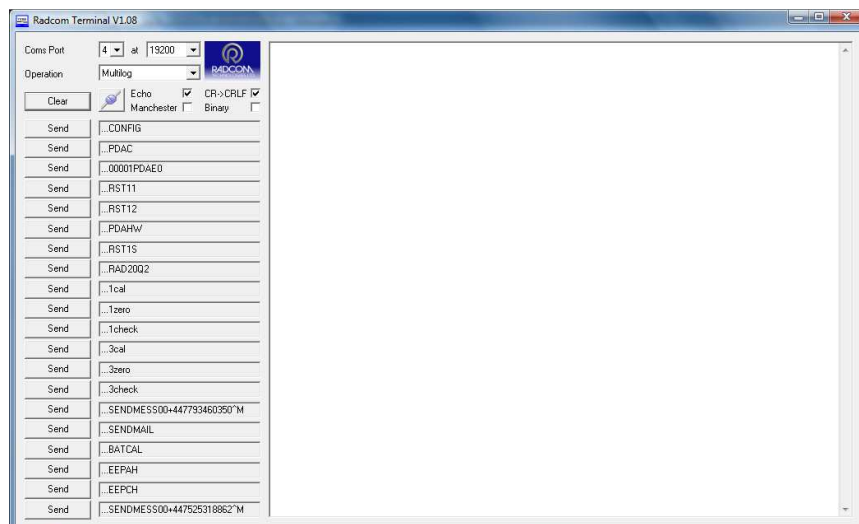
1. Using Radwin software go to 'Manual Call' and select 'Advanced Upload/Download/Utilities/' select the 'enter new parameters' box and select 'OK' then on the next screen select 'Upload' and check the 'Update logger time box' then 'OK'.

This has now reset the logger to current time and date – you must do this if you have disconnected or changed the main battery.



Once this is complete close the Radwin software

2. Open RadTerm software (make sure your logger is connected to the PC using the COMs cable) When you open Radterm software you should see this- ensure you have the correct COM port selected (drop down in top left hand corner)and baud rate set at 19200 for a Multilog.(9600 for an LX)





Ref: FAQ0318

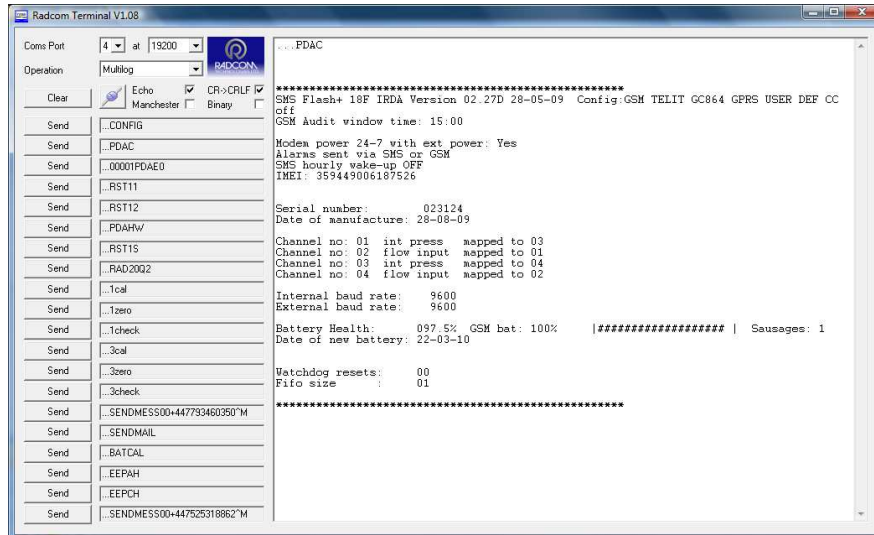
Version: 1.0

Title-Radcom loggers -reset battery info

Made By: AB 22/09/15

(Issue 2)

3. Press 'Send' for the ..PDAC command to the logger. You should see this-



This is the information screen for the logger and lists its manufactured configuration, firmware level, modem type, serial #, build date, channel settings and battery condition / date of new battery. Note Main Battery above is at 097.5%

4. Now press 'send' for the ..RAD20Q2 command
You should see 'logger stopped!' on the screen.

5. Now press 'send' for the ..EEPAH command –

For a Multilog -

You should see repeated on the screen '014.0 Amp hours'

Press 'Enter' to accept this.

You should see 'Values stored' followed by 'Erasing memory' followed by '100.0% Battery capacity <U>p <D>own' – this is repeated.

At this point you can reset the main battery to other values (e.g. its previous % value if you have not changed it) by reducing or increasing its percentage – Capital D to bring it down, Capital U to increase it.

Press 'Enter' again to see 'Values Stored'

For an LX

You should only see 'Values Stored'



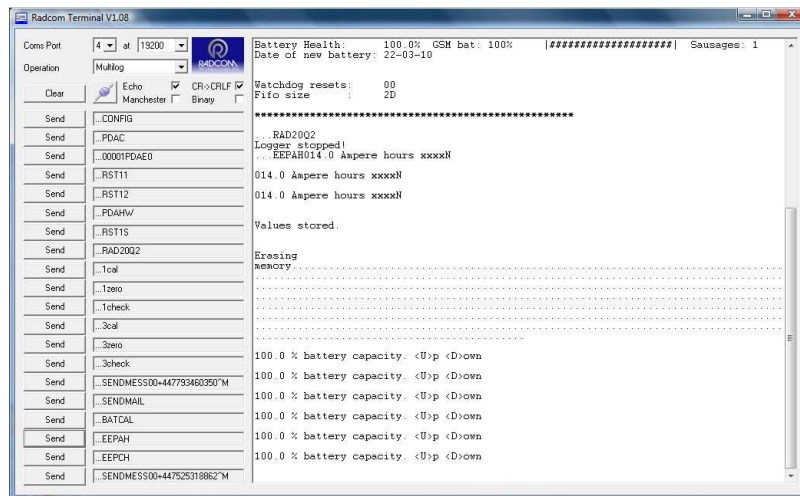
Ref: FAQ0318

Version: 1.0

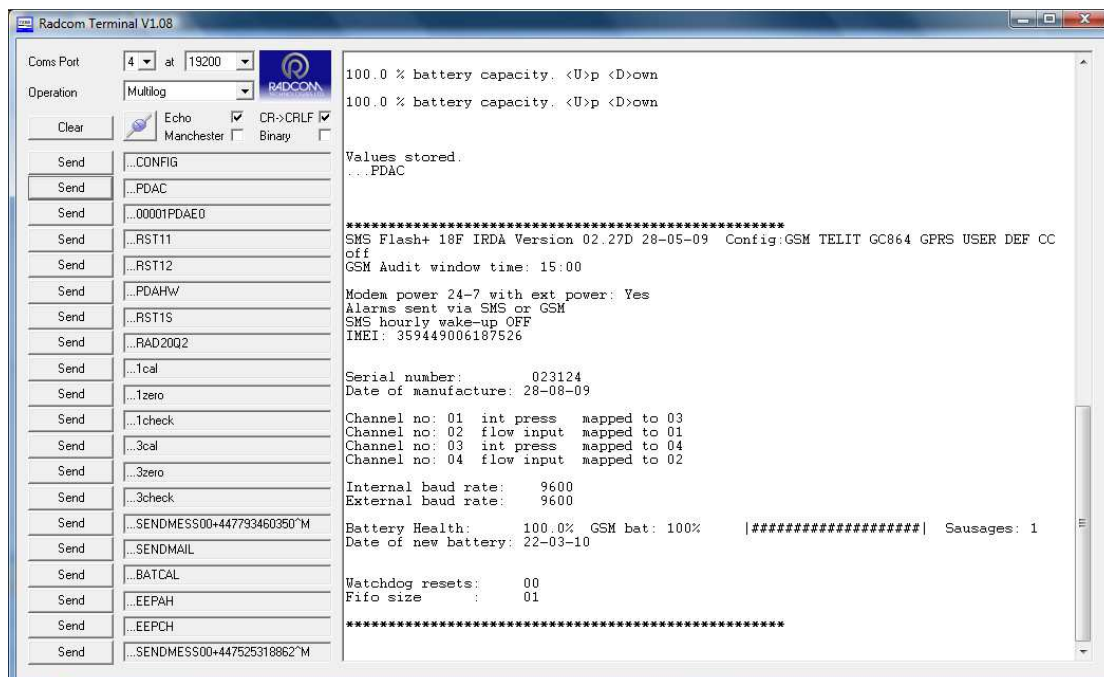
Title-Radcom loggers -reset battery info

Made By: AB 22/09/15

(Issue 2)



6. Finally press 'send' for a ...PDAC Command again.
Notice the battery status is now 100.0% with today's date.



7. Note – Only the main battery can be set by this method - the GSM battery cannot be reset independently. GSM battery condition is a calculation based on Main battery condition. So, if you only change the GSM battery then you should reset the main battery condition to its previous % level (see point 5 above)

Document History:

Edition	Date of Issue	Modification	Notes
1st	13/06/13	Release	
2nd	22/09/15	Format update	