



Ref: FAQ-0015

Version: 1.0

Title – Modem Configuration Tool

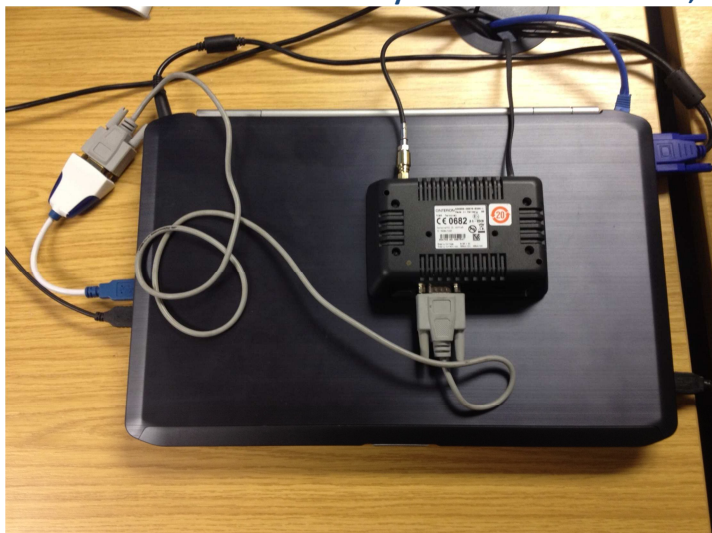
Made By: KE_121213 (Issue 1)

Question –

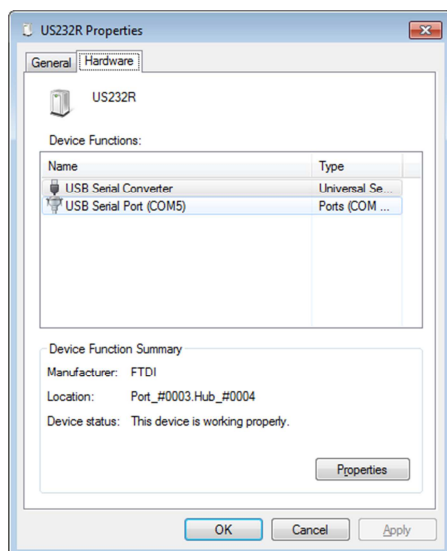
How can we set the correct modem parameters on a CINTERION TC65 Modem?

Answer –

1. Connect the Modem to your PC as shown below;



2. Check the Comm port number the modem is connected to (Use Device Manager);





Ref: FAQ-0015

Version: 1.0

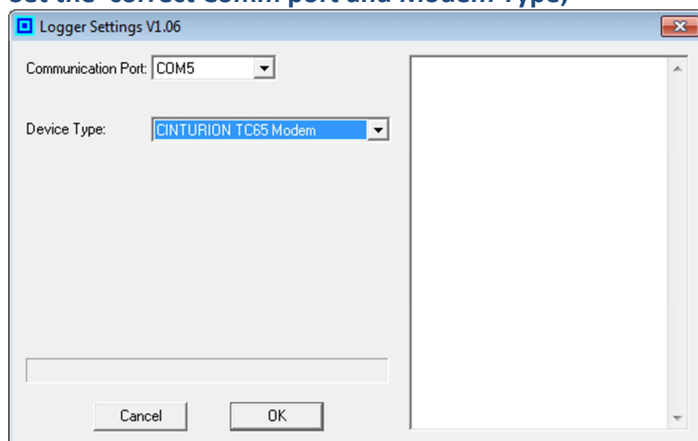
Title – Modem Configuration Tool

Made By: KE_121213 (Issue 1)

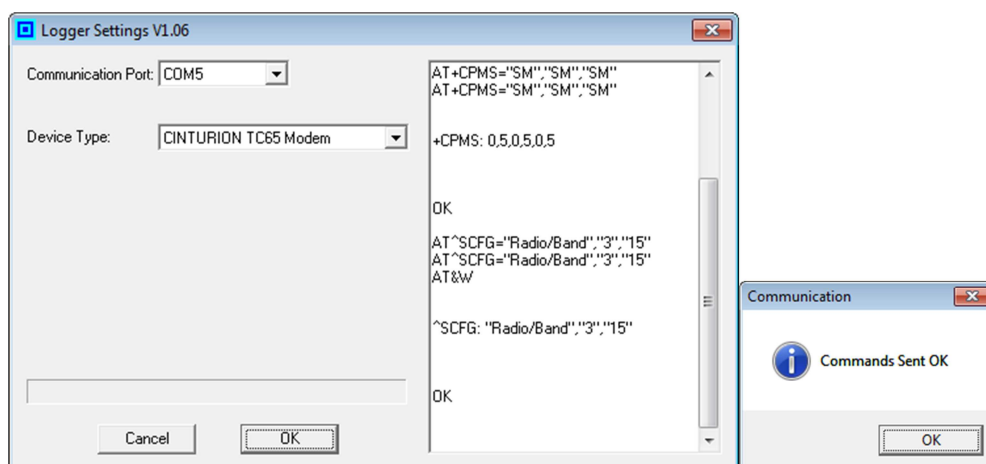
Cont –

3. Run the LogrCnfg.exe program (NB: the file LogrCnfg.ini should also be in the same folder)

4. Set the correct Comm port and Modem Type;



5. Click 'OK'



6. The program will run and send the configuration to the modem. When completed, you will see the message “Commands Sent OK”

Document History:

Edition	Date of Issue	Modification	Notes
1st	12/12/13		1 st release