



Ref: FAQ-0019

Version: 1.0

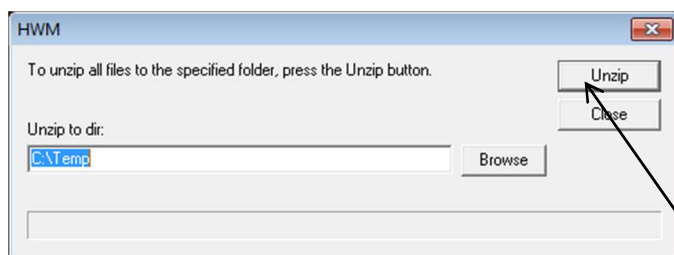
Title – Radwin View Installation Guide

Made By: KE_150114 (Issue 1)

1. Download the latest Radwin View Application from the HWM Website (www.hwm-water.com)
2. Double-Click the icon to start the Installation process;

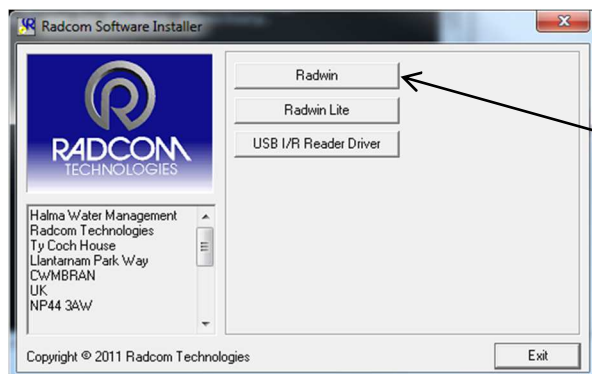


Click to install Radwin software.



Click to Unzip to Temp folder.

3. Now click <<Radwin>> from the Installer



Click to install Radwin software.

Note Radwin Lite is only for specialist use.

4. The I/R Driver is normally installed automatically, however, in case it does not in step 0 below, please click the <<USB I/R Reader Driver>> after the main installation is complete.



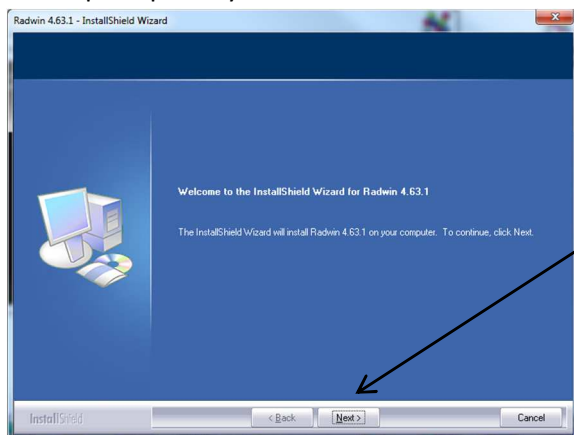
Ref: FAQ-0019

Version: 1.0

Title – Radwin View Installation Guide

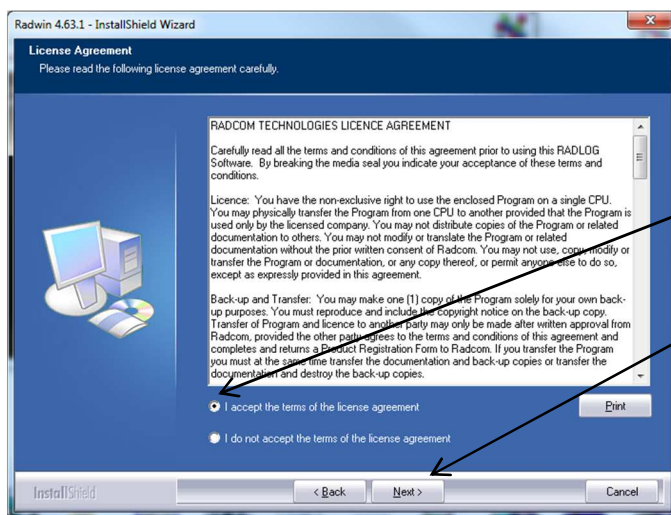
Made By: KE_150114 (Issue 1)

5. When prompted by the InstallShield Wizard to install:



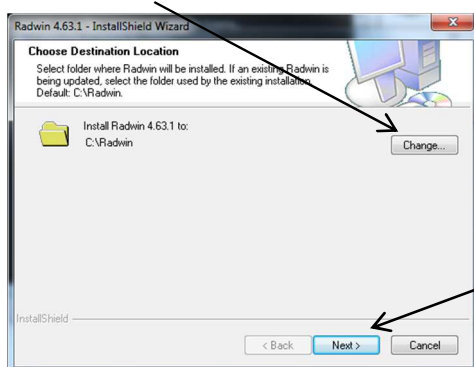
Click <<Next>>

6. Read and agree the terms of the Licence agreement to continue:



Click the <<I accept...>> radio button, then Click<<Next>>

7. Choose the Destination folder you wish to install to by clicking <<Change>>



or to accept the default installation (recommended) click <<Next>>



Note: Ensure that you choose a folder that you have read/write access to. Check with your IT team if you are not sure.



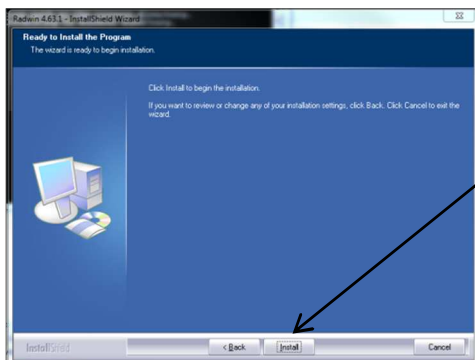
Ref: FAQ-0019

Version: 1.0

Title – Radwin View Installation Guide

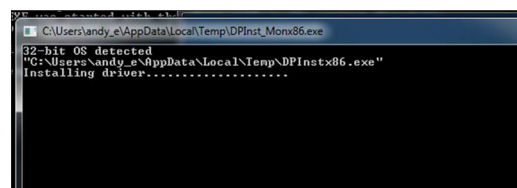
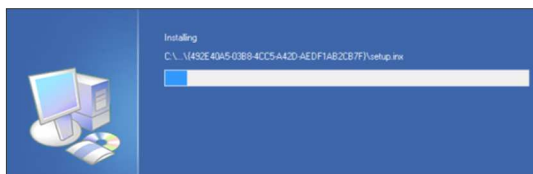
Made By: KE_150114 (Issue 1)

The installation process now has all the information it needs to proceed so click <<Install>> to



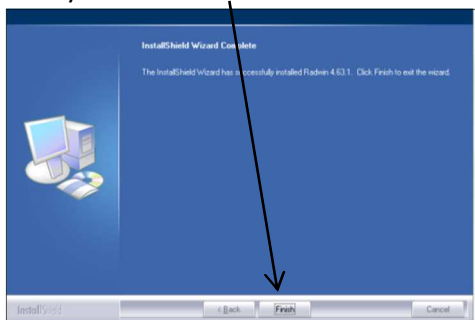
continue

Wait while the installation completes...

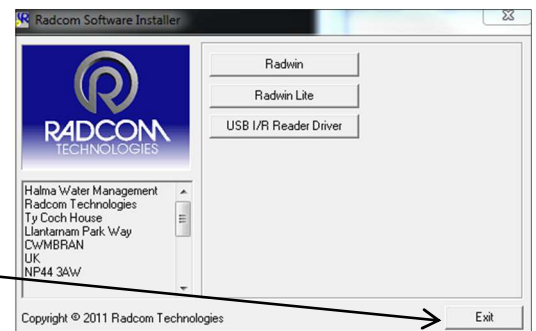


and the I/R Driver installs...

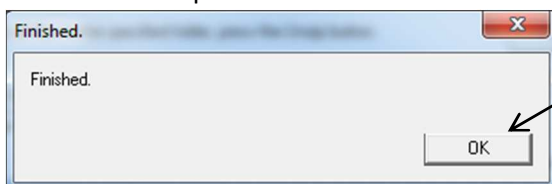
8. Finally click <<Finish>> to close the InstallShield Wizard.



9. Then click <<Exit>> to close the Installer.



10. If you have installed from a downloaded file instead of the CD you will see the extra window below.
The Installation process has now finished so click <<OK>> to confirm.





Ref: FAQ-0019

Version: 1.0

Title – Radwin View Installation Guide

Made By: KE_150114 (Issue 1)

First time run of Radwin

Once you have installed Radwin you need to make some initial setup choices and configurations.

Creating your first Database

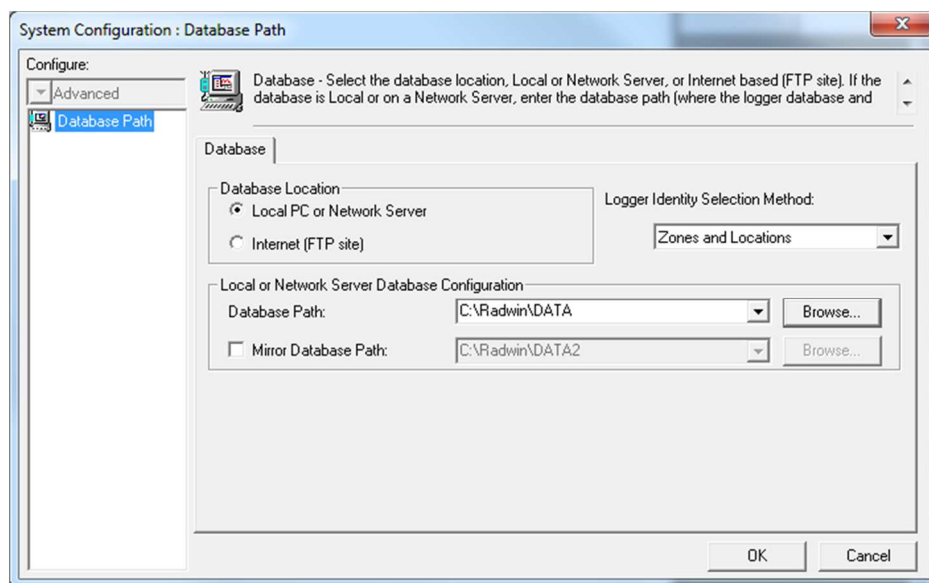
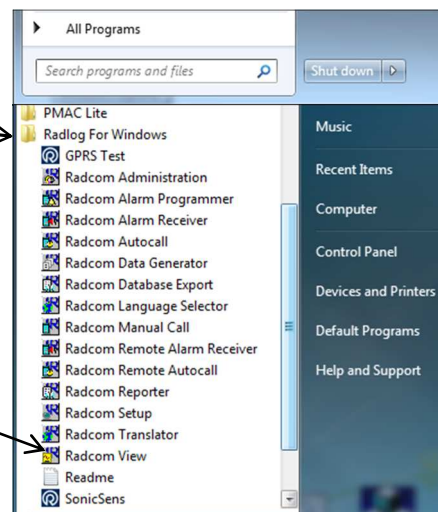
1. From the start menu, click <<All programs>> and find the program group “Radlog for Windows”
2. Click <<Radlog for Windows>> to expand the group and then click <<RadcomView>>



You may wish to “Pin” the program to your taskbar for convenience. To do this, **right** click on the Radcom View icon and select “Pin to Taskbar” from the pop up menu. The program can now be conveniently started from the taskbar.

3. After the program starts you will be automatically prompted to set up a new database path

This is for local storage of configuration information and any data that you may directly download from the logger or from DataGate™ after site installation.





Ref: FAQ-0019

Version: 1.0

Title – Radwin View Installation Guide

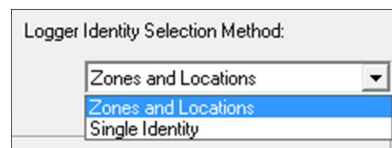
Made By: KE_150114 (Issue 1)



A note about Logger Identity Selection Method:-

A logger is identified with a single 7 digit reference ID. If you select *Single Identity* from the menu then you use the full 7 digits how you like.

E.g. account no, customer number, etc.



can

However, when installing a larger fleet of loggers, Radwin allows you to group individual logger *Locations* into larger *Zones*. This allows for geographic regions (*Zones*) to be easily indexed where large fleets are involved.

So, Locations refer to loggers

Zones **contain** Locations (loggers)

Many Zones may be created

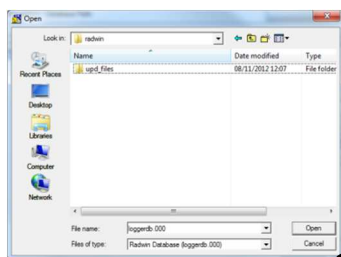
Each Zone may contain many Locations (loggers)

For example, split a town up into Zones then split the Zones up into Locations and deploy loggers within each Zone.

If you choose this (default) option you will be prompted (later on) to decide how the 7 digits are allocated. E.g. ZZ/LLLL means you can have up to 99 zones with 99,999 loggers in each zone, or ZZZ/LLLL gives 999 zones with 9,999 loggers in each and so on.

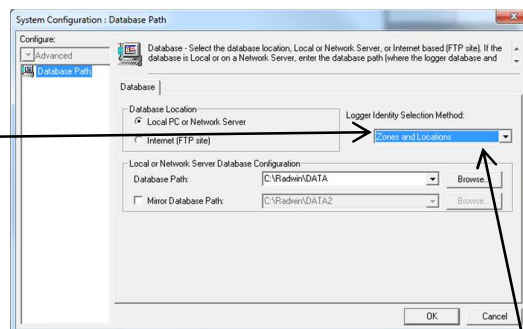
In this way you can develop an indexing method to allow you to quickly find sites you wish to examine.

4. From the Logger Identity Selection Method, choose the option as described above.

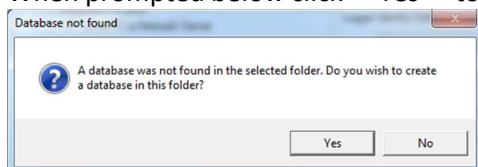


If you wish to change to location of the folder where the database is stored, click <<Browse...>>

Then navigate to the desired folder and click <<Open>> to choose the folder.



When prompted below click <<Yes>> to confirm the folder choice.





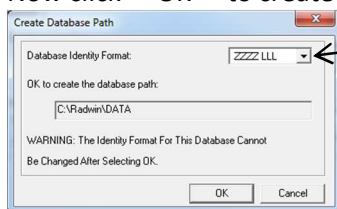
Ref: FAQ-0019

Version: 1.0

Title – Radwin View Installation Guide

Made By: KE_150114 (Issue 1)

5. Now click <<OK>> to create the database.



If you chose *Zones and Locations* in step 4, chose your format for the ID number. The default is the UK postcode format, e.g. AB12 3CD

Then click <<OK>> to continue.



Note: The Database format CANNOT be changed from this point. If you need to change it later you will need to delete the \DATA folder and start again.

If you have upgraded to this edition of Radwin from an earlier version, then the database format that was chosen in the previous edition will be maintained.



Ref: FAQ-0019

Version: 1.0

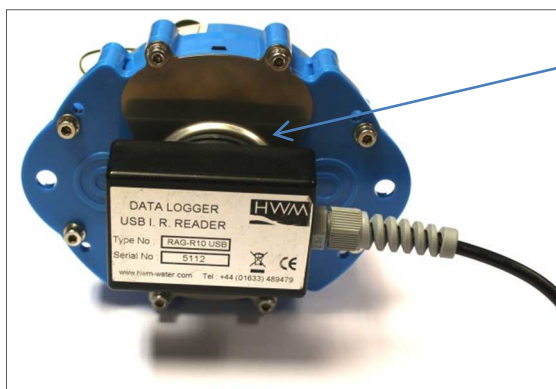
Title – Radwin View Installation Guide

Made By: KE_150114 (Issue 1)

Setting up the communications cable

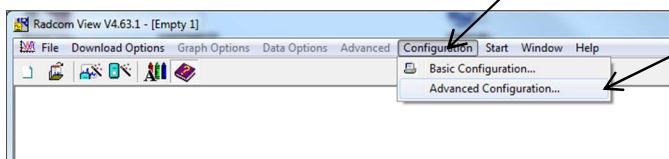
Note: The following instructions assume the use of the USB IR Reader connected to a PC USB port or a Serial IR Reader connected to a PC serial port.

1. Connect the USB plug to a spare USB port on your computer or the Serial plug to a spare Serial port on your computer.
2. Position the reader head on the logger as shown below

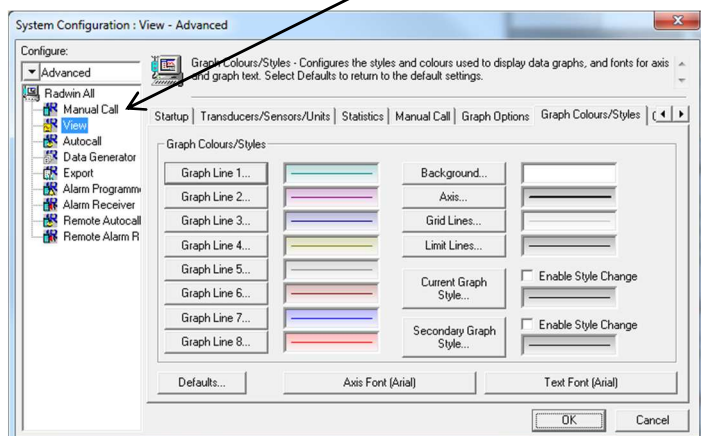


Take care to position the head over raised ring area around the window. The reader head will hold onto the logger by magnets in the ring around the window and this helps with positioning.

3. Start Radcom View again (unless already running) and from the menu select <Configuration> and then <Advanced Configuration...>



4. The menu below shows details all the setup functions available to Radwin, for the Communications port configuration click the <<Manual Call>> item from the list.





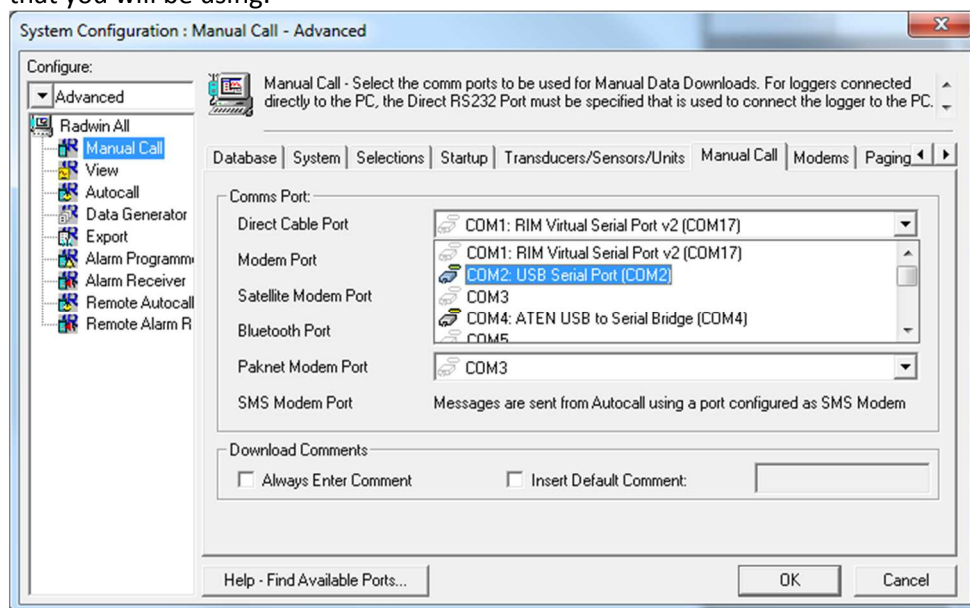
Ref: FAQ-0019

Version: 1.0

Title – Radwin View Installation Guide

Made By: KE_150114 (Issue 1)

5. The *Manual Call* menu now appears, from the *Direct Cable Port* dropdown list pick the COM port that you will be using.



A note about COM port choice:

In the example above of a Laptop, you can see 3 COM ports listed, the numbers and descriptions vary from PC to PC but to summarise the types:-

- *RIM Virtual Serial Port* (e.g. COM1:) should be ignored as Radwin will not communicate via these types of ports. These often have high COM numbers (above 10).
- *USB Serial Port* (e.g. COM2:) is a genuine COM port that can be used with Radwin and is usually the USB Reader cable.
- *USB to Serial Bridge* (e.g. COM4:) is also a genuine COM port that can be used and is generally a USB to Serial adaptor cable.

If you are using a Desktop computer or a Laptop with a docking station, you may also see a *Communications Port*. This is also a valid choice for your *Direct Cable Port*, however there is usually more than one so check the physical indication by the socket on the back of the computer.

Tip: If you are using a USB connection, you can check you have the right one as follows:-

- i. Look down the list and note each COM number that is not empty.
- ii. Click <<Cancel>> to close the *System Configuration* menu.
- iii. Remove the USB plug from the PC.
- iv. Repeat steps 3 to 5 above and look for the one that has disappeared. This is the COM port you need to select in step 5.
- v. Click <<Cancel>> to close the *System Configuration* menu again.
- vi. Reinsert the USB cable **IN THE SAME PORT AS BEFORE** and repeat steps 3 to 5, selecting the COM port noted in step iv above.



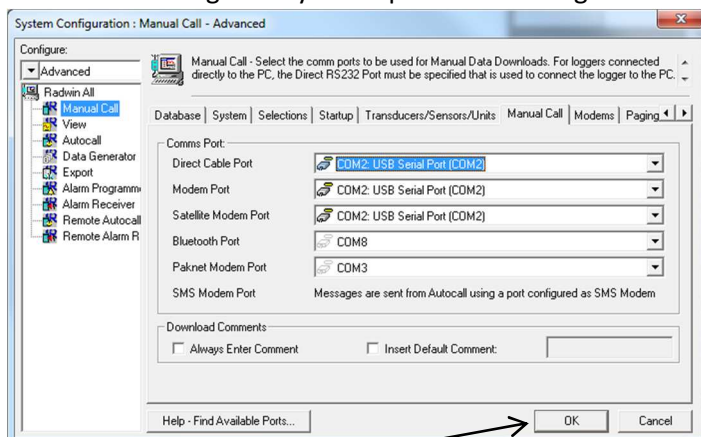
Ref: FAQ-0019

Version: 1.0

Title – Radwin View Installation Guide

Made By: KE_150114 (Issue 1)

6. There is no need to configure any other ports at this stage.



Click <<OK>> to save the configuration.

7. Congratulations, you are now ready to begin configuring your new data logger.

Document History:

Edition	Date of Issue	Modification	Notes
1st			