



Ref: FAQ0059

Version: 1.0

Title – Radwin Meter read

Made By: AB 15/05/14

(Issue 1)

## Question – What is the difference between meter reading and calculated reading in Radwin graph statistics?

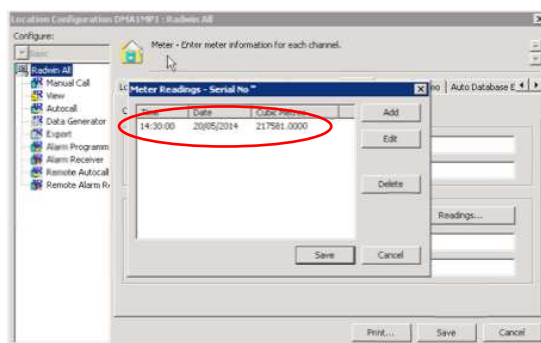
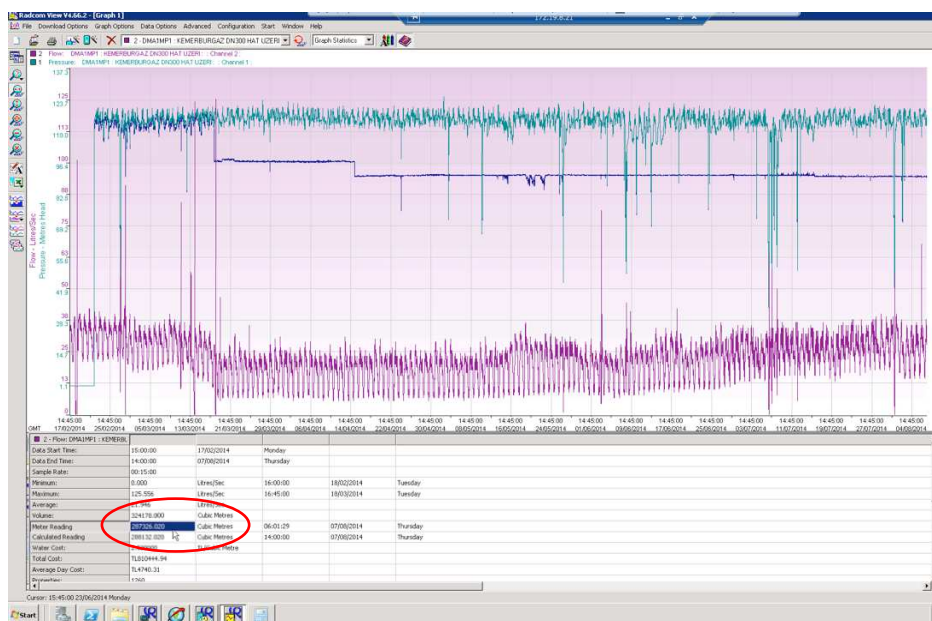
The Meter reading is an actual known value that you set in Radwin software at a point in time - (see separate FAQ on entering meter readings)

Once you insert a known meter reading into the data at a point in time, the software then calculates, from the flow rate it is recording, what the meter reading will be at any point as time goes on. This is the calculated value (based on the original meter reading and subsequent flow rate)

(i.e The meter reading is the entered value, the calculated value is the derived value calculated at the end of the graph period based on the flow between the time of meter read and the end of the graph.)

But the problem is they are (meter reading and calculated reading) almost same although there has been a few thousand cubic meter of water passed thru the pipe.

See attached screenshots. Meter register is different in "Location Configuration" and "Meter Reading on Graph Statistics". Therefore, we have doubt whether Radwin is calculating correct volume or not.



**Ref: FAQ0059****Version: 1.0****Title – Radwin Meter read****Made By: AB 15/05/14****(Issue 1)**

The Meter readings look correct on Radwin.

1. In Location data, this is the actual Meter read entered on 20/05/14 (217581.000)

2. In the Radwin Screen shot, the meter reading is the value calculated by the logger on its last call in (06:00 07/08/14) and the calculated value is for 14:00 07/08/14 (287326.000 )

From the time of the meter reading on 20/05/14 - 217581.000, to 07/08/14 , very roughly the average consumption is 12l/s. If we make a quick calculation forward to 07/08/14, this would give a meter reading very close to what is displayed in Radwin.

### **Document History:**

<b>Edition</b>	<b>Date of Issue</b>	<b>Modification</b>	<b>Notes</b>
First	15/05/14	Release	