



Ref: FAQ0069

Version: 1.0

Title-Setting minimum night flow alarms

Made By: AB 07/1/14

(Issue 1)

How to configure the time range for Minimum night flow alarms

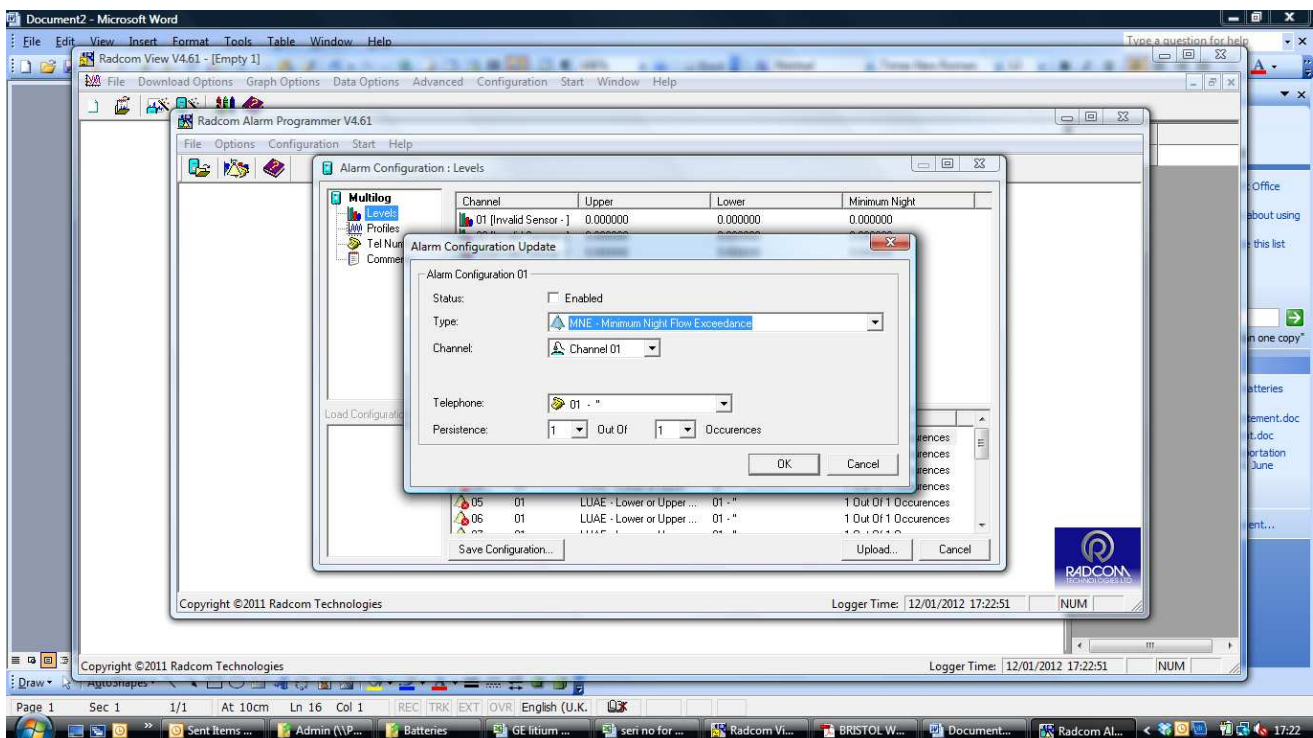
Using Radwin Software –

If you want to alarm for minimum night flow you can select Min night flow against any channel. You can then use Persistence and Occurrence settings to determine the time over which the min night flow alarm will operate.

It cannot be active before midnight but it will start at midnight and the settings are as follows -

Persistence	Occurrence	Period of view (alarm sent)
1	1	12.00 to 1.00am
2	2	12.00 to 2.00am
3	3	12.00 to 3.00am
Etc		

In the below example the persistence of 1/1 will mean the minimum night flow alarm range will be from midnight to 1.00am





Ref: FAQ0069

Version: 1.0

Title-Setting minimum night flow alarms

Made By: AB 07/1/14

(Issue 1)

Using HWM Online –

The process is the same as above – select the ‘Edit logger’ facility in HWM online for the logger concerned – configure the alarm for Minimum night flow (Channel 2 at 0.05 below) and configure the persistence as above (in the example below it is set for 12midnight to 3.00am.

The screenshot shows the HWM Online Customer Login interface. The browser address bar displays 'https://www.hwmonline.com'. The page contains several tables and form elements:

#	Type	Name	Last Reading	Cal Value	Offset	Meter
1	Pressure (m)		75.599998	0.100000	0.000000	-
2	Flow (l/s)		0.101667	0.500000	0.000000	4983.874 m³
6	Flow (l/s)		0.011979	0.500000	0.000000	- m³

Below the table is a 'Submit' button.

Alarm Levels

Channel	Low Level	High Level	Min Night Flow	Rate Of Change
CH1 Pressure (m)	0	0	0	0
CH2 Flow (l/s)	0	0	0.05	0

Alarm Conditions

#	Channel	Type	Persistence
1	CH2 Flow	Minimum Night Flow	3 / 3
2	CH1 Pressure	None	1 / 1
3	CH1 Pressure	None	1 / 1
4	CH1 Pressure	None	1 / 1
5	CH1 Pressure	None	1 / 1
6	CH1 Pressure	None	1 / 1
7	CH1 Pressure	None	1 / 1
8	CH1 Pressure	None	1 / 1

Document History:

Edition	Date of Issue	Modification	Notes
1st	07/10/14	Release	