



Ref: FAQ0071

Version: 1.0

Title – Min Night Flow alarm period

Made By: AB 07/10/14

(Issue 1)

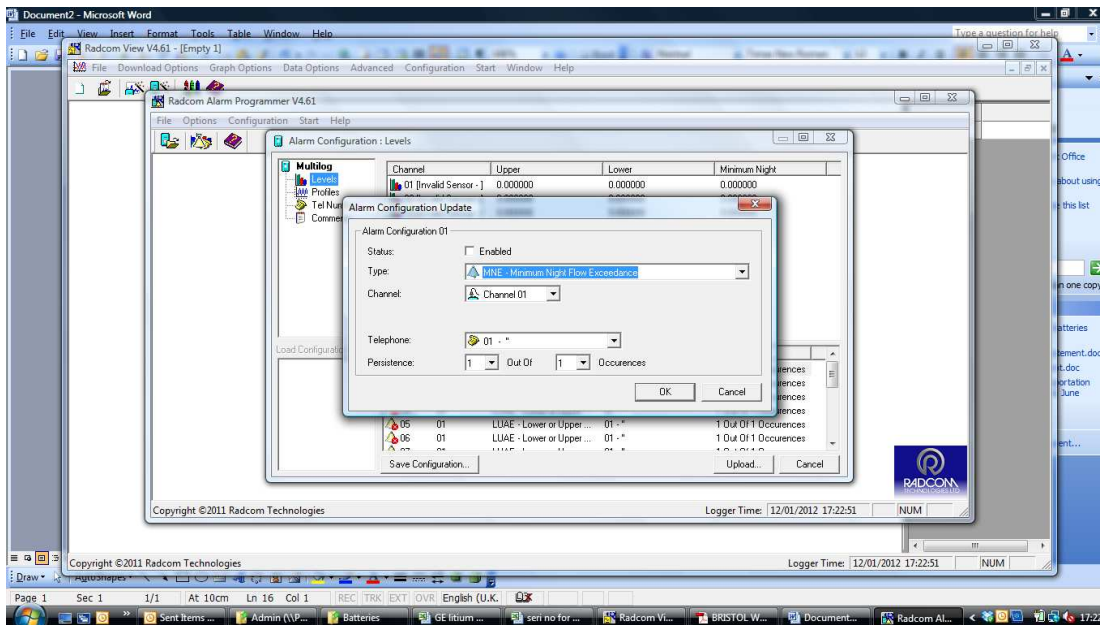
How to set Minimum night flow Alarm duration in Radwin Software

If you want to alarm minimum night flow you can select Min night flow against any channel.

You can then use Persistence and Occurrence settings to determine the time over which the min night flow alarm will operate.

The alarm cannot be active before midnight but the alarm period will start at midnight and by using the settings as follows the alarm period can be defined -

Persistence	Occurrence	Period of view (alarm sent)
1	1	12.00 to 1.00am
2	2	12.00 to 2.00am
3	3	12.00 to 3.00am
Etc		



Document History:

Edition	Date of Issue	Modification	Notes
1st	07/10/14	Release	