



Ref: FAQ0097

Version: 1.0

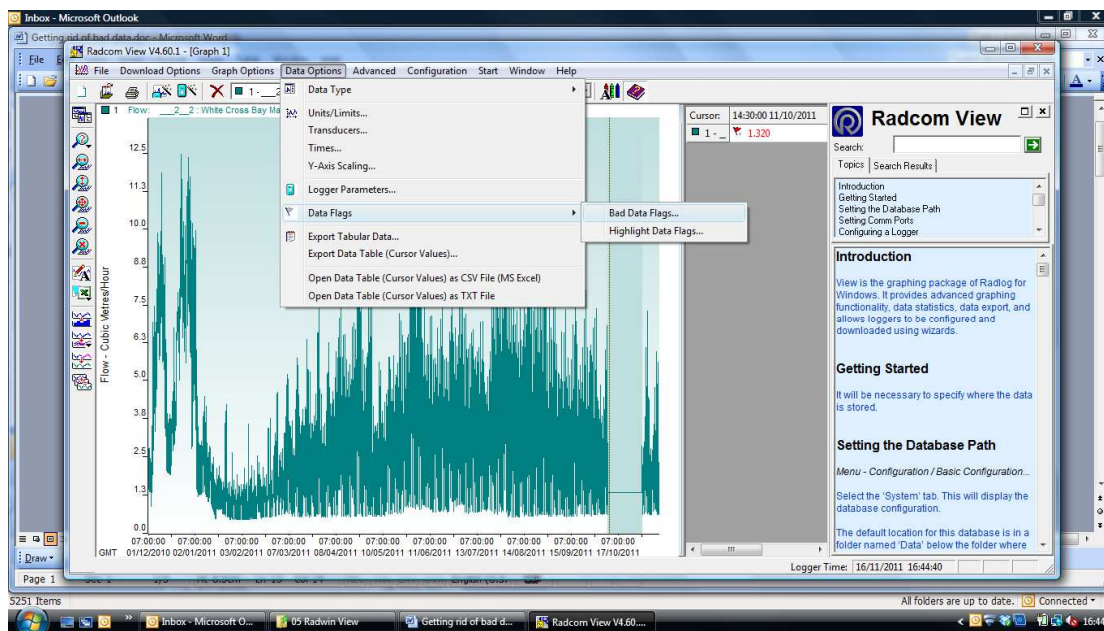
Title – Flagging bad data in Radwin

Made By: AB 14/07/15

(Issue 1)

## Bad data can distort the View graph - how can I delete it from Radwin

You can use data flags in view to mark data as 'bad' so that it will get replaced by the 'missing data' value. Go to the 'Data Options' menu and select 'Data Flags' -> 'Bad Data Flags...'. Enter the data time region to remove (you can also zoom into a region before opening this window and the region will be set to the visible region of the graph). 'Check' the Set/Clear bad data flags check box – this toggles the bad state of any points in the specified time region when checked.



**Data Status Flags**

Data flags are used to mark data. Missing data is automatically flagged, and displayed with a red flag against each missing data value on cursor values and

Graph - Selected graphs will be updated

☒ 1 - \_\_\_2\_\_\_2 : White Cross Bay Main Gate - O2 9365 : A0001 : Channel ...

Data Region

Start Time: 07:00:00 01/12/2010

End Time: 07:15:00 14/11/2011

Data Status Flags

☐ Set/Clear Bad Data Flags - Bad data will be treated as Missing Data.

OK Cancel

The points marked as bad will now display as the value configured for missing data, either a set value or next good value as defined for that unit type in system configuration, and should correct the graph scaling.



Ref: FAQ0097

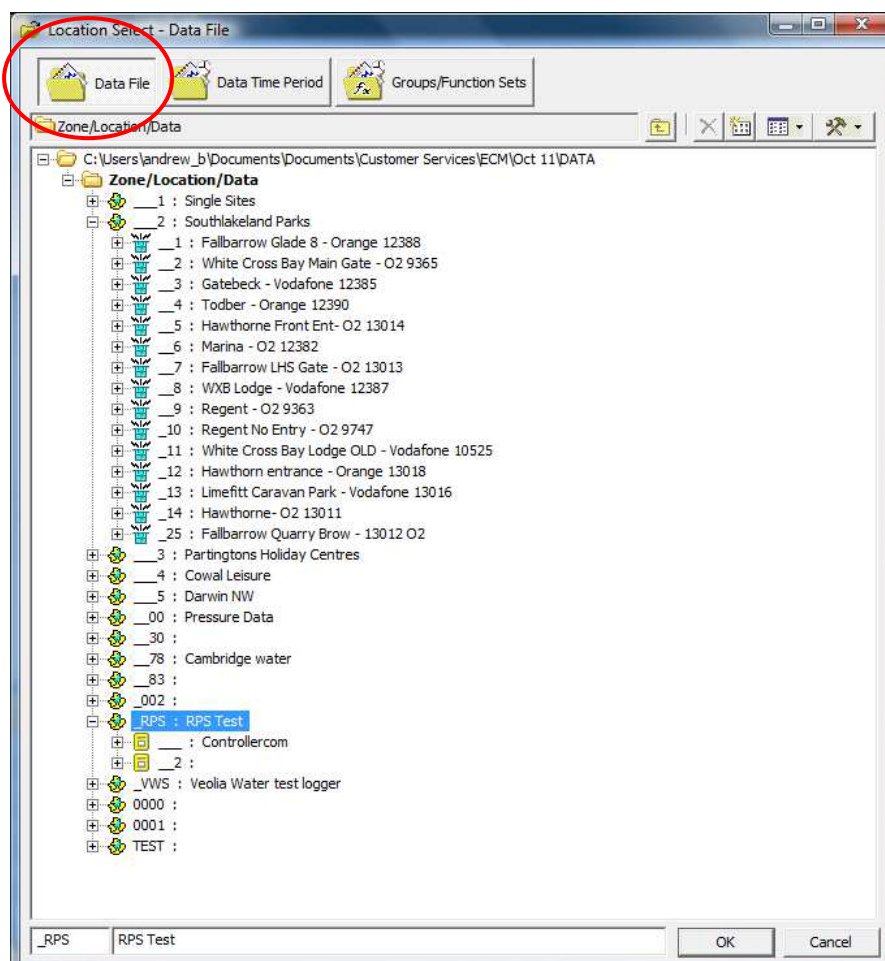
Version: 1.0

Title – Flagging bad data in Radwin

Made By: AB 14/07/15

(Issue 1)

Ensure you have loaded the data from the Data File (not Data Time Period) otherwise the Data Flags option will be 'greyed out'.



### The original customer question

Please see screenshot below, how do we get rid of the dodgy data so that we can get the scale of the graph back to normal?? As you can see at some point it was reading at -540, and now that we have replaced the Sensor we are getting accurate data but because of the scale of the graph it's hard to read. I know how to amend the Y axis temporarily but do not want to have to do this every time we look at the graph. Is there any way of doing this??



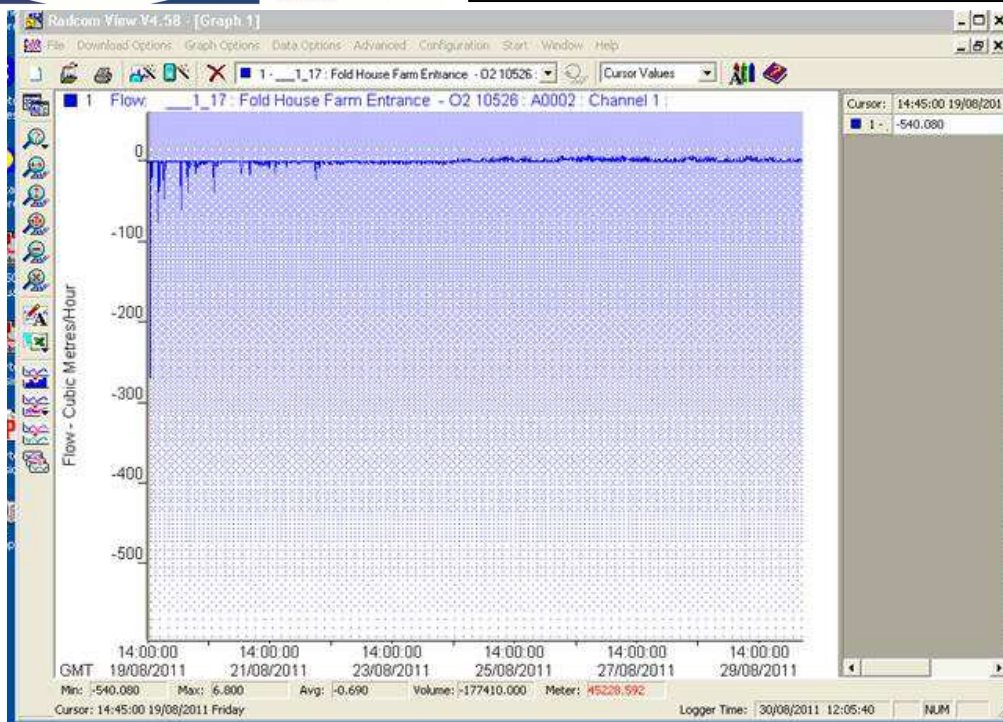
Ref: FAQ0097

Version: 1.0

Title – Flagging bad data in Radwin

Made By: AB 14/07/15

(Issue 1)



### Document History:

Edition	Date of Issue	Modification	Notes
1st	14/07/15	Release	