



Ref: FAQ0141

Version: 1.0

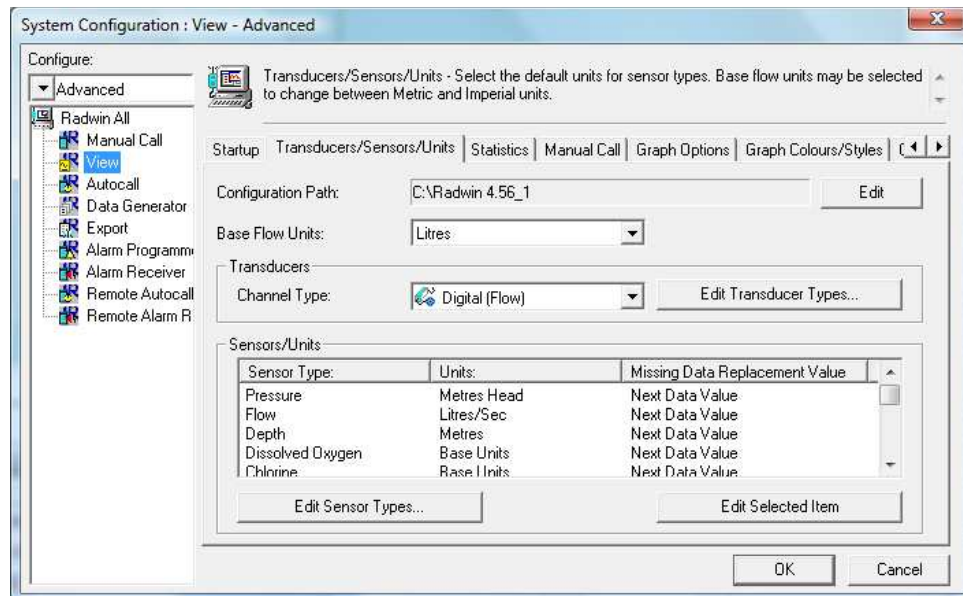
Title – Change Radwin default units

Made By: AB 15/09/15

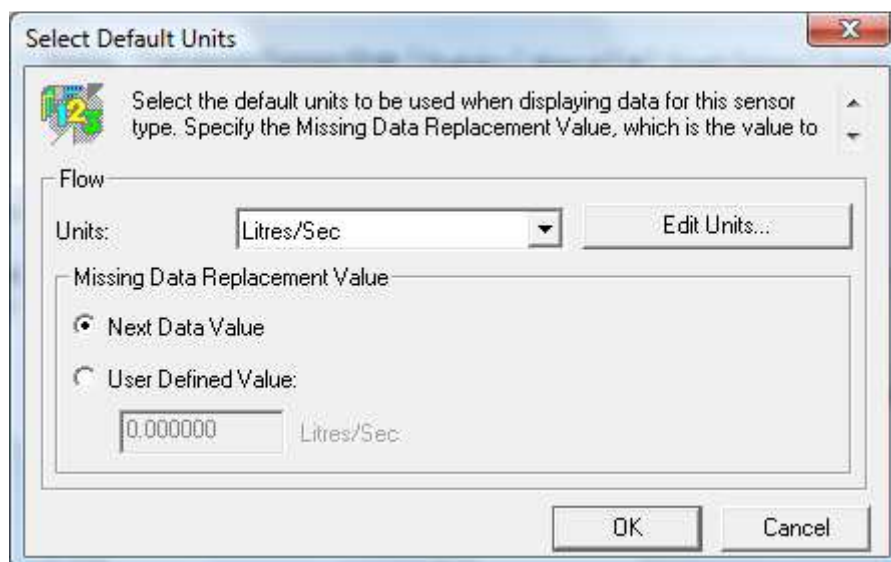
(Issue 2)

## How to change the default units in Radwin Software from Metric to Imperial for example

Go to System Configuration > Advanced Configuration > Transducers/Sensors/Units



Select the relevant unit and double click to reveal as follows  
Select correct unit from the drop down and OK



### Document History:

Edition	Date of Issue	Modification	Notes
1st	11/09/12	Release	
2nd	15/09/15	Updated	