



Ref: FAQ0142

Version: 1.0

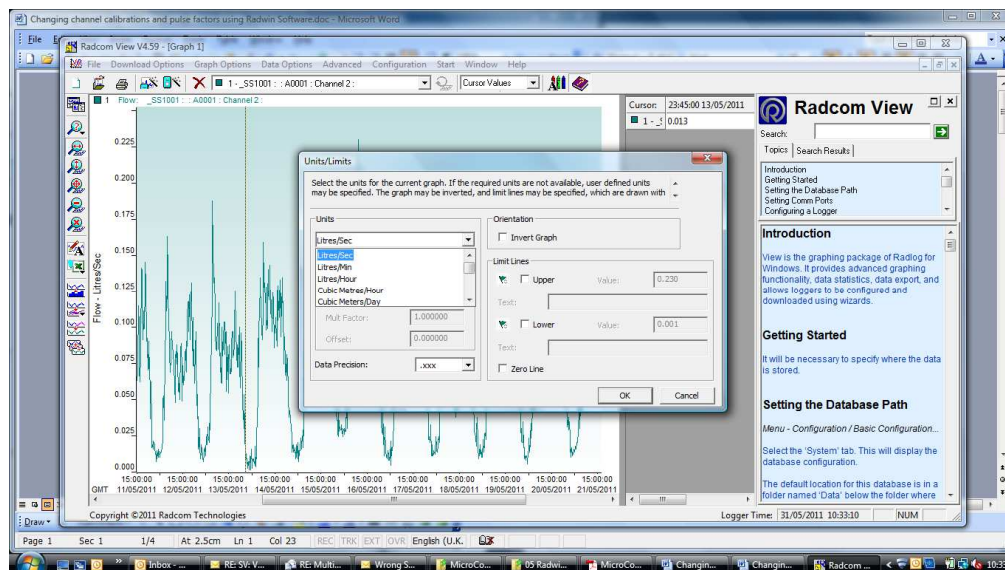
Title – Change Radwin View graph units

Made By: Ab 15/09/15

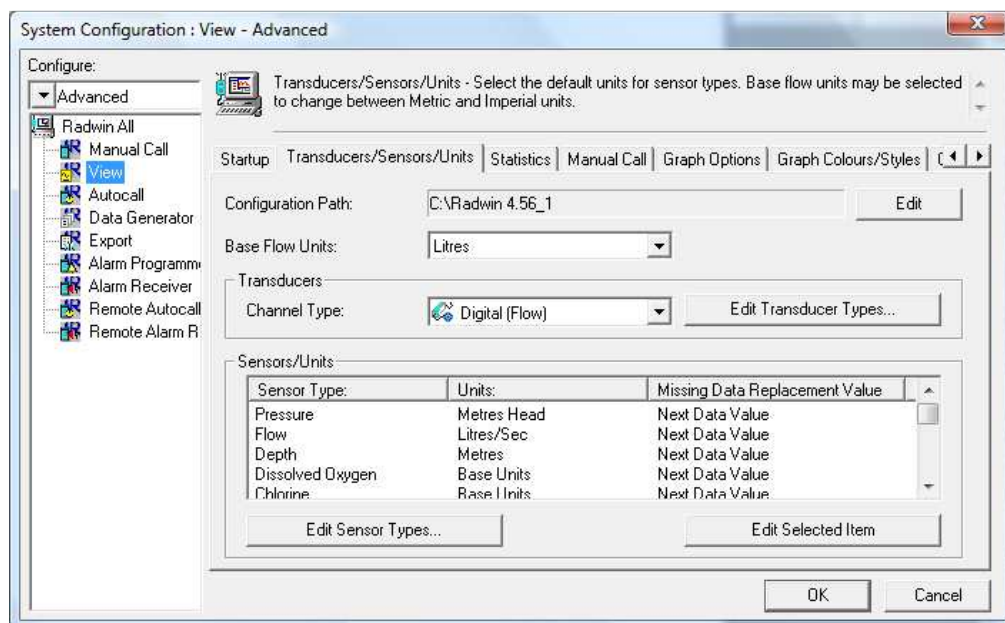
(Issue 2)

How to change the units in the Radwin View graph temporarily

1. If you are using Radwin View to look at the graph and you go to Data Options > Units/Limits and select the units you require from the drop down then this will only apply those settings to the graph you are looking at (as below)– it will not change the logger settings permanently.



2. In order to change the logger settings permanently you can do it in Radwin by going to Configuration > Advanced configuration> Transducers/Sensors/Units



Double click on the unit you want to change –



Ref: FAQ0142

Version: 1.0

Title – Change Radwin View graph units

Made By: Ab 15/09/15

(Issue 2)

Select your preferred unit from the drop down and 'OK'

Document History:

Edition	Date of Issue	Modification	Notes
1st	02/05/12	Release	
2nd	15/09/15	Updated format	



Ref: FAQ0142

Version: 1.0

Title – Change Radwin View graph units

Made By: Ab 15/09/15

(Issue 2)