



Ref: FAQ0145

Version: 1.0

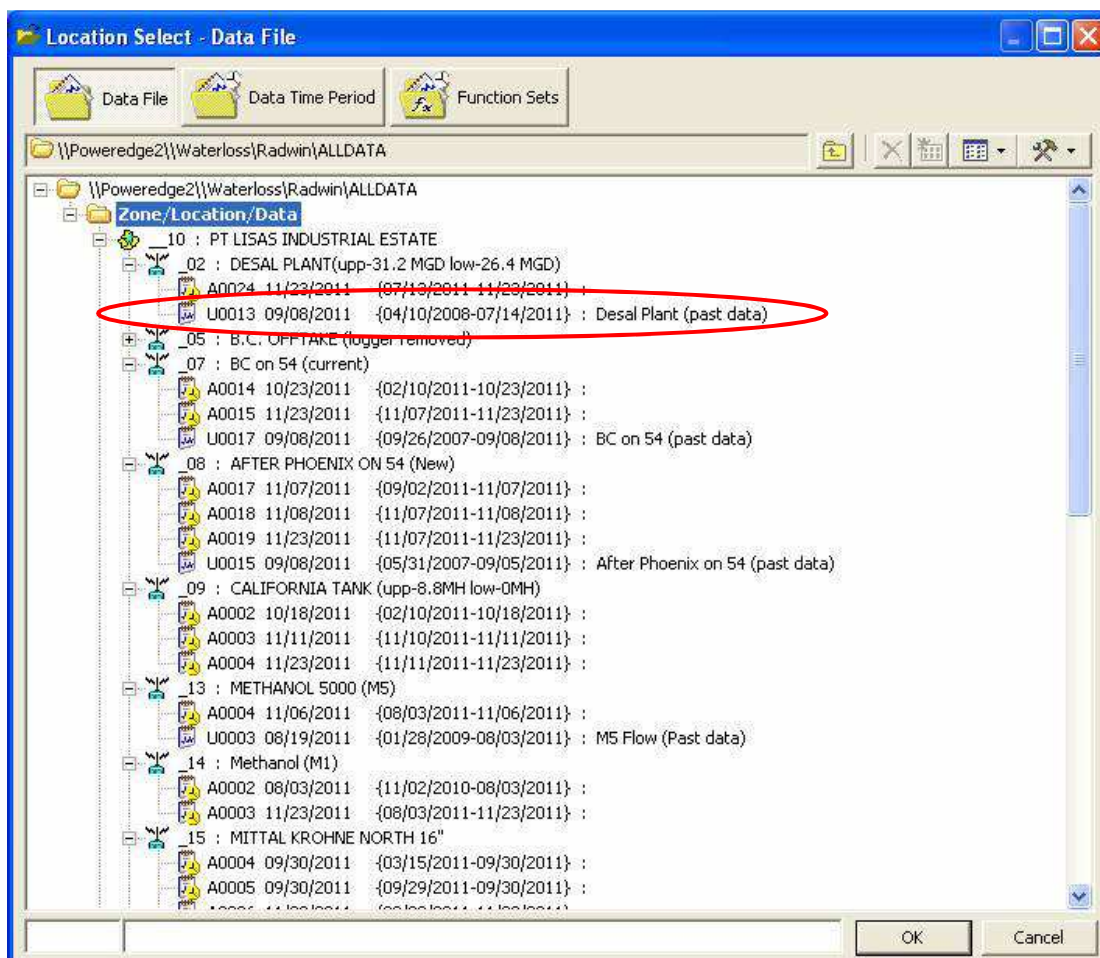
Title – Radwin View save specific graph

Made By: AB 15/0915

(Issue 2)

How to save specific viewed graphs for later use – Radwin ‘U’ files.

Radwin software has the ability to save graphs. Saved graphs are saved as 'U' files. The purpose of this is normally to save a 'derived' graph e.g. if the derived graph function is used to add 2 graphs together the resultant graph can be saved and will be created in a 'U' file.



Saving graphs just creates new 'U' files. It does not remove any files. 'U' files cannot be converted back to Manual or Archive files as the data is stored in a different format (floating point values, as opposed to raw integer logger values).

Document History:

| Edition | Date of Issue | Modification | Notes |
|---------|---------------|---------------|-------|
| 1st | 11/09/12 | Release | |
| 2nd | 15/09/15 | Format update | |