



Ref: FAQ0149

Version: 1.0

Title – Adding company name to graph

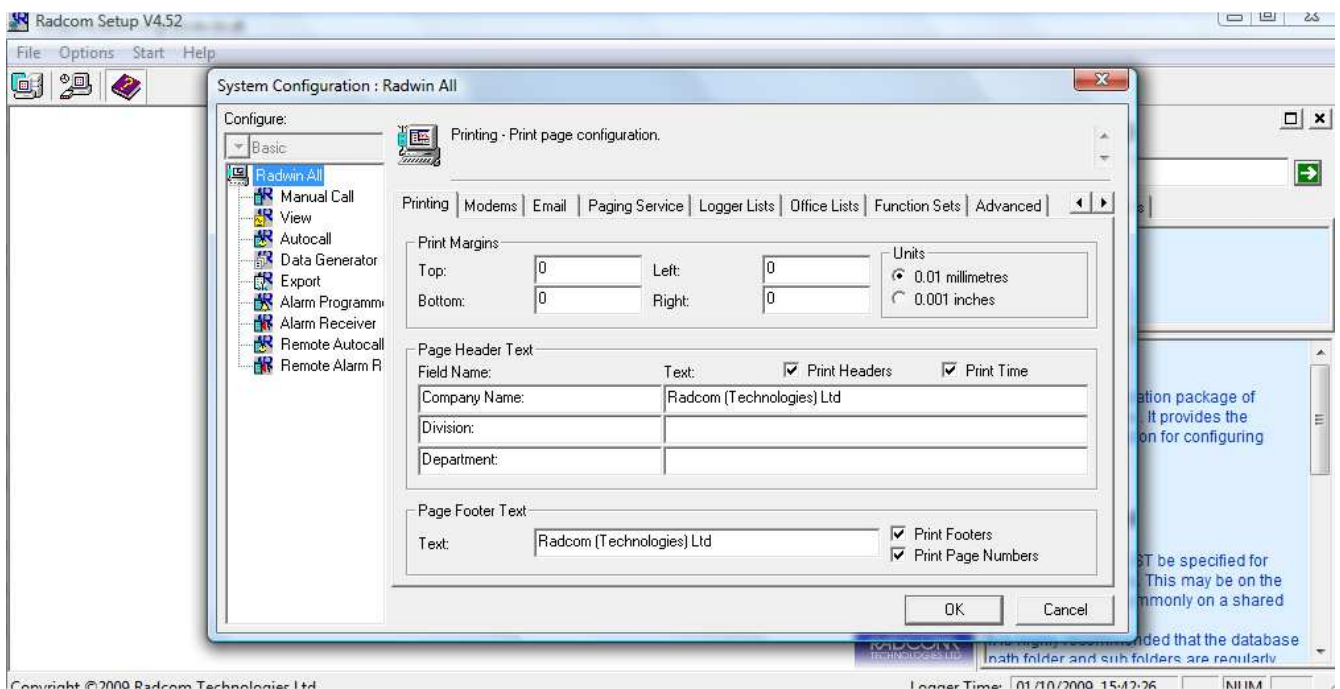
Made By: AB 15/09/15

(Issue 2)

How to add the Company name to the Radwin View Graph

Go to Radcom Set Up, Options, System Configuration and the Printing Tab

Enter you own details in the relevant boxes



Document History:

| Edition | Date of Issue | Modification | Notes |
|---------|---------------|---------------|-------|
| 1st | 11/09/12 | Release | |
| 2nd | 15/09/15 | Format update | |
| | | | |