



Ref: FAQ0225

Version: 1.0

Title-Radwin- download from Datagate

Made By: AB 18/09/15

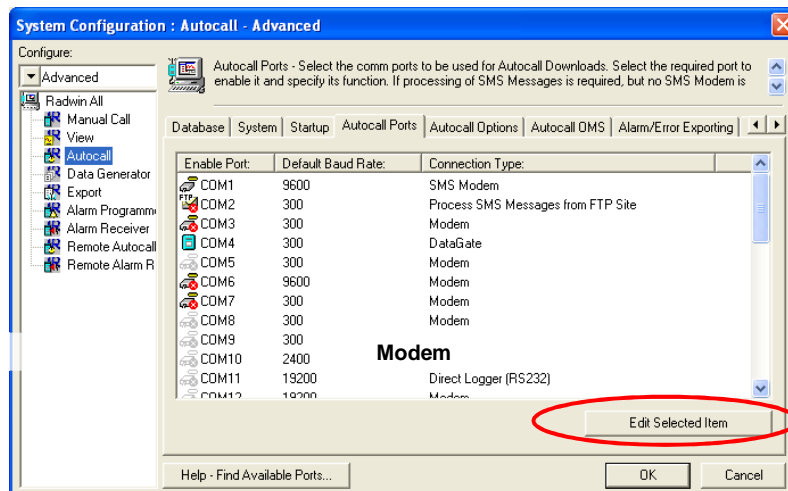
(Issue 2)

How to configure Radwin software to download data from Datagate

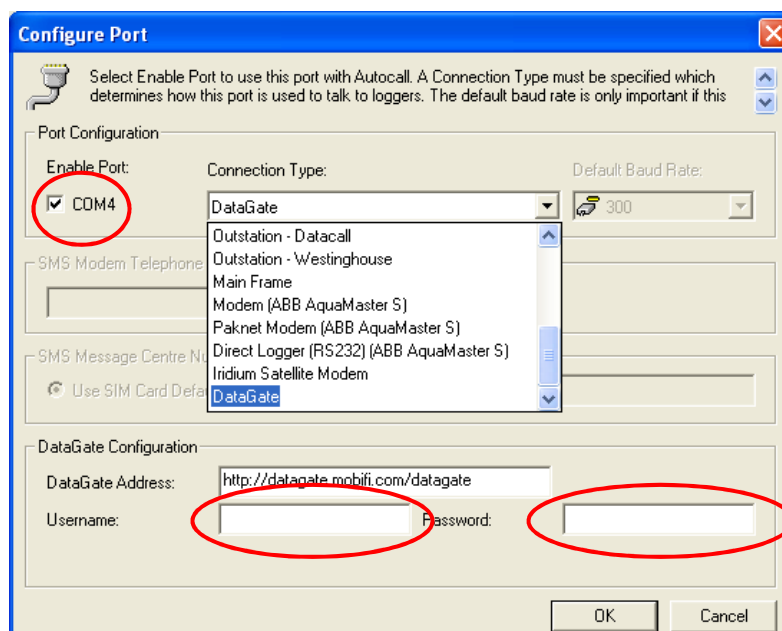
First set up Autocall as follows -

In Setup > System configuration > Autocall ports

Select a free port (highlight it and then click Edit selected item)



In 'Edit Selected Item' Screen then select Datagate from the connection Type drop down.



Click on Enable port (tick the box)

Enter your Datagate account details in Username and Password. (These should have been supplied to you)



Ref: FAQ0225

Version: 1.0

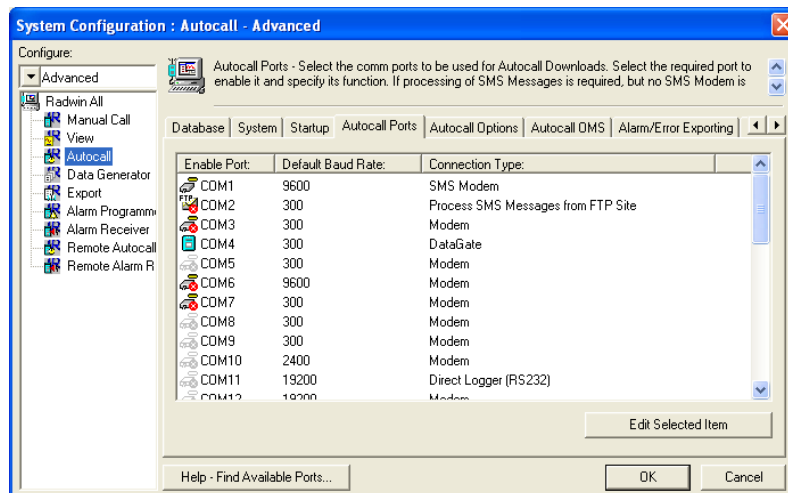
Title-Radwin- download from Datagate

Made By: AB 18/09/15

(Issue 2)

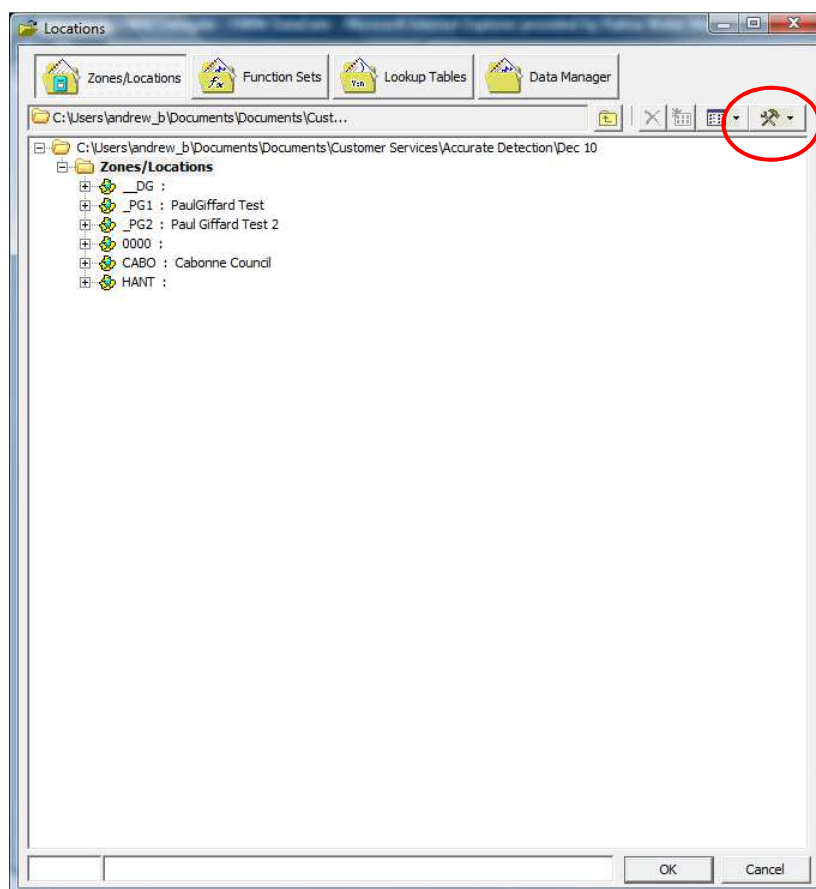
Press 'OK'

You then should see :



Now you need to set up the loggers in your Database if they are not already there.

In Set up > Options > Item configuration you should now see your logger database as below.



If your logger details are not here then you need to enter your logger details as follows.



Ref: FAQ0225

Version: 1.0

Title-Radwin- download from Datagate

Made By: AB 18/09/15

(Issue 2)

You may need to add a new Zone (or you can add your logger to an existing Zone.)

To enter a new zone –

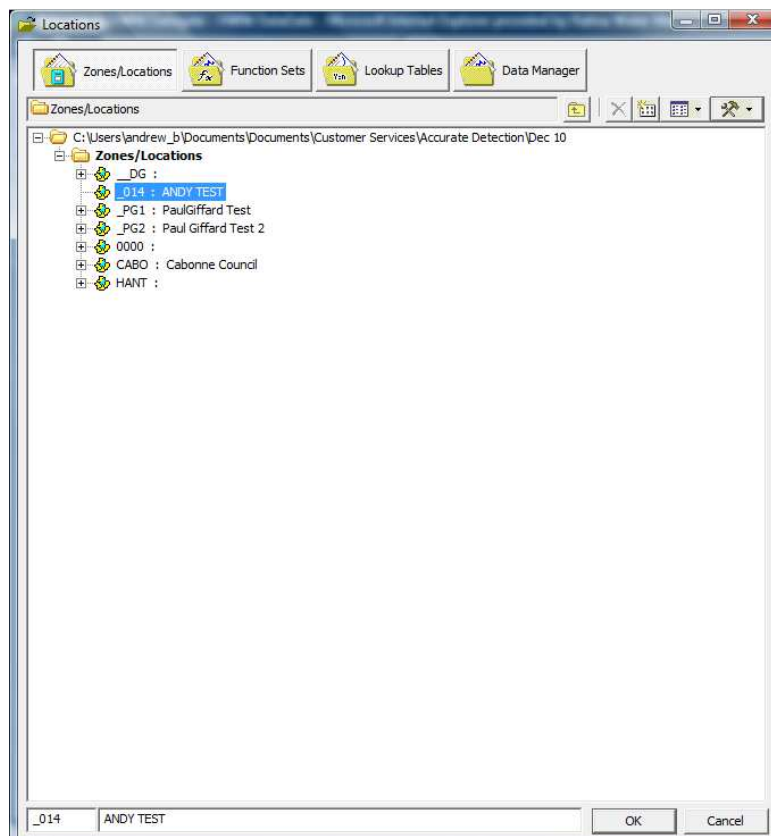
Click on the ‘Hammer & sicle’ icon (see screen shot above)

Then select ‘Create New Zone’ to reveal this screen shot

A screenshot of the 'Create Zone' dialog box. It has a title bar 'Create Zone' and a close button. Inside, there is a message: 'Enter the required identity and name for the Zone. If the zone already exists it will get updated.' Below this, there are two input fields: 'Identity:' with the value '014' and 'Name:' with the value 'ANDY TEST'. At the bottom right, there are 'Save' and 'Cancel' buttons.

Enter your Zone I/D and Name and then ‘Save’.

You should now see the new Zone in the list as below.



Highlight the new Zone and select the ‘Hammer and Sicle’ Icon again

This time select ‘Create New Location’

You should now see this screen (below)



Ref: FAQ0225

Version: 1.0

Title-Radwin- download from Datagate

Made By: AB 18/09/15

(Issue 2)

Location Configuration _014_ : Radwin All

Configure:

Basic

Location - Specify the location identity and name. Enter names for each of the logger channels.

Location | **Logger** | Statistics | Transducer | Unit/Levels | Meter | Autocall | Memo | Auto Database E

Identity

Zone: 014 ANDY TEST

Location:

☐ GIS Position: 00° 00' 0.00" N, 00° 00' 0.00" E

Channel Names

Channel	Name
01	
02	
03	
04	

Print... Save Cancel

First enter your location description (numerical and alphanumeric descriptions)

Then select the logger tab.

Location Configuration _014_ : Radwin All

Configure:

Basic | **Logger** | Statistics | Transducer | Unit/Levels | Meter | Autocall | Memo | Auto Database E

Logger - Select the logger type and baud rate. Select the connection type (how the computer will communicate with the logger), and enter telephone numbers if required. The logger manufacture

Logger

Type: Multilog LX Baud: 9600

Date Manufactured: 11/01/1970 Serial: 12345

Last Battery Change: 11/01/1970 Last Known Logger Configuration

Connection

Connection Type: SMS Modem

GSM Data Number:

SMS Voice Number: +441640848733

Print... Save Cancel

Fill in the logger details as accurately as possible.

Logger type from the drop down

Baud is automatically filled from the logger type selected above

Serial number is on the logger label



Ref: FAQ0225

Version: 1.0

Title-Radwin- download from Datagate

Made By: AB 18/09/15

(Issue 2)

Connection type – select SMS Modem from the drop down

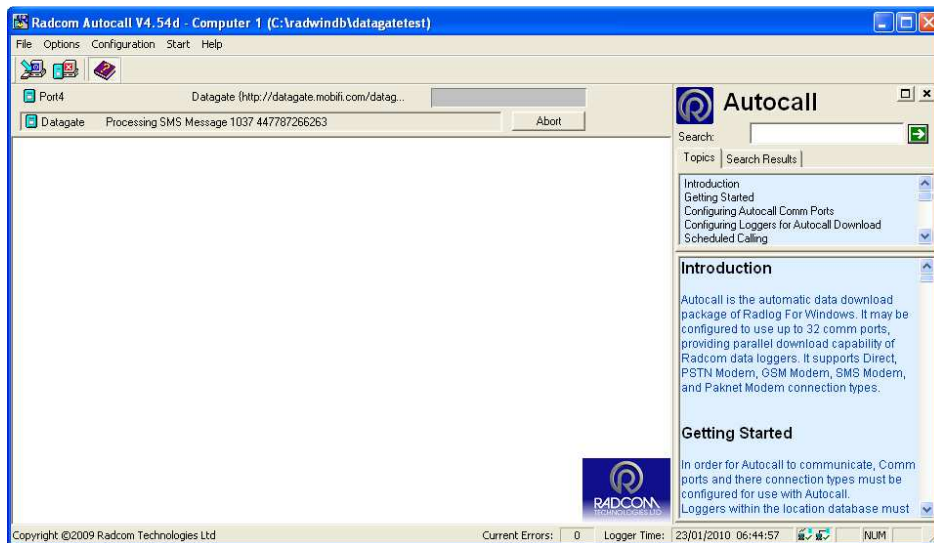
SMS Voice number – be sure to enter the correct logger phone number in international format (+44 drop the zero) **DOUBLE CHECK THIS NUMBER IS CORRECT**

Then select 'Save'.

Repeat this process for each of your loggers.

Once complete then Start Autocall

This will process all the available data messages from Datagate relating to your loggers.



Then use Radwin View to select each of your loggers and view the data.

Document History:

Edition	Date of Issue	Modification	Notes
1st	02/01/13	Release	
2nd	17/09/15	Format update	