



Ref: FAQ0239

Version: 1.0

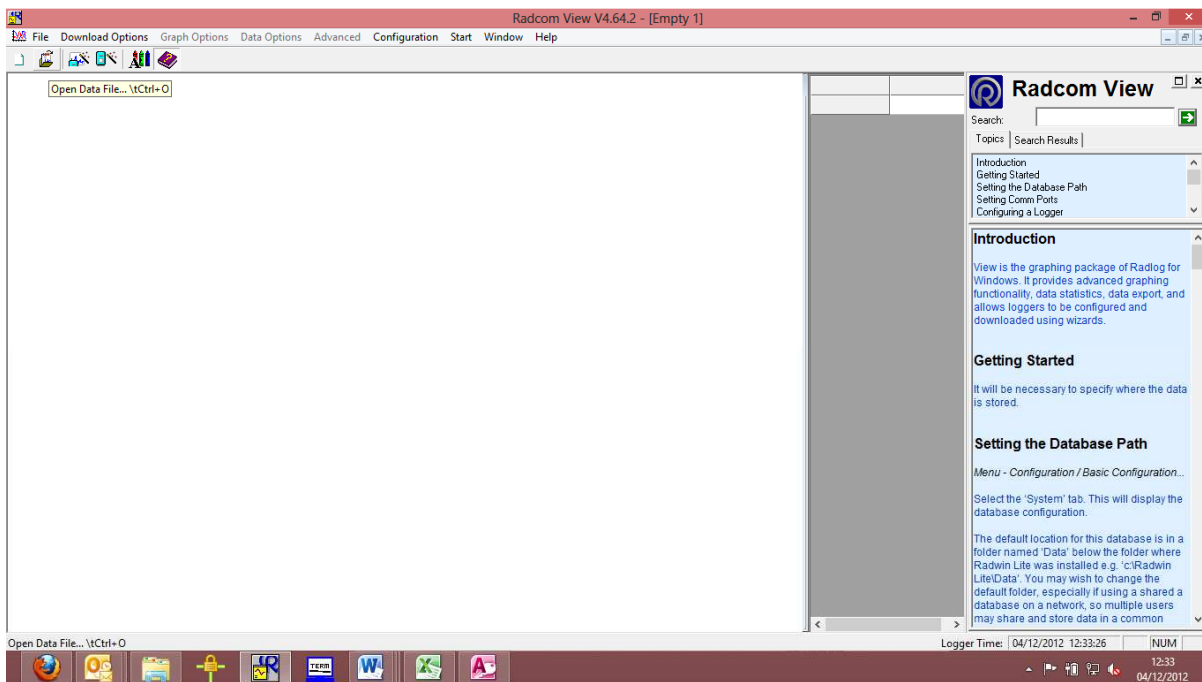
Title – Radwin how to enter meter reads

Made By: AB 18/09/15

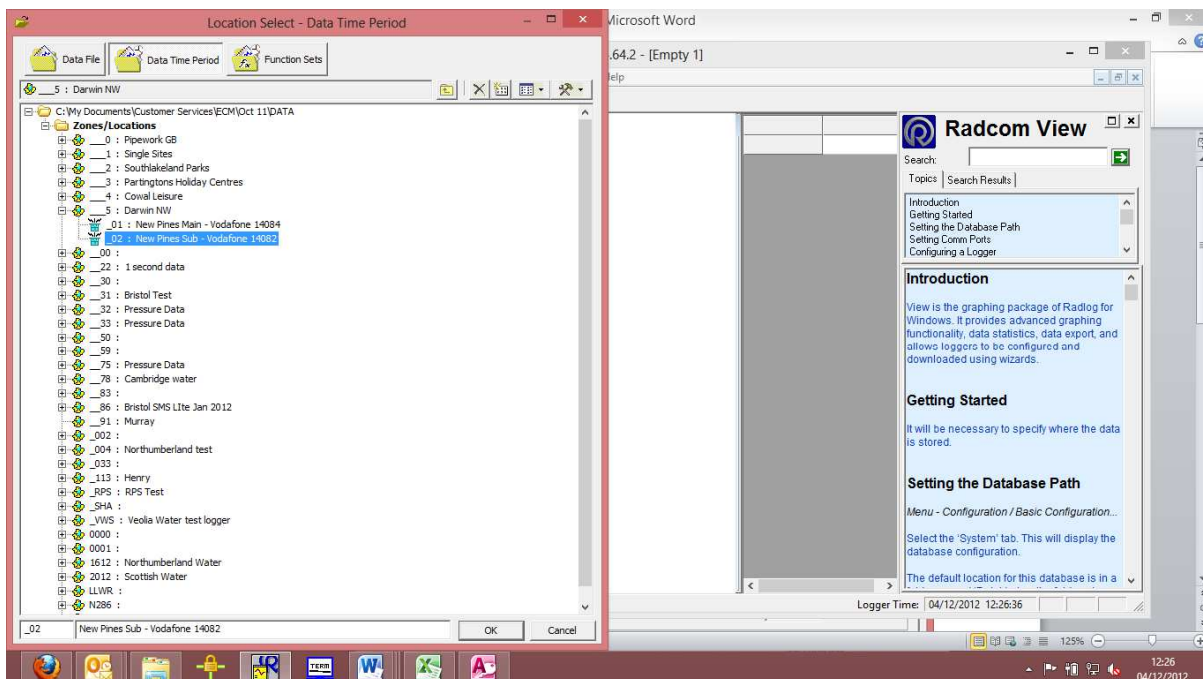
(Issue 2)

## How to enter meter readings into the Radwin Database for the logger

From Radwin View screen open the Database Second Icon on the top left of screen –



Then locate the logger you want to edit -



Then locate the logger you want to set up for editing – Right click on it to reveal as follows -



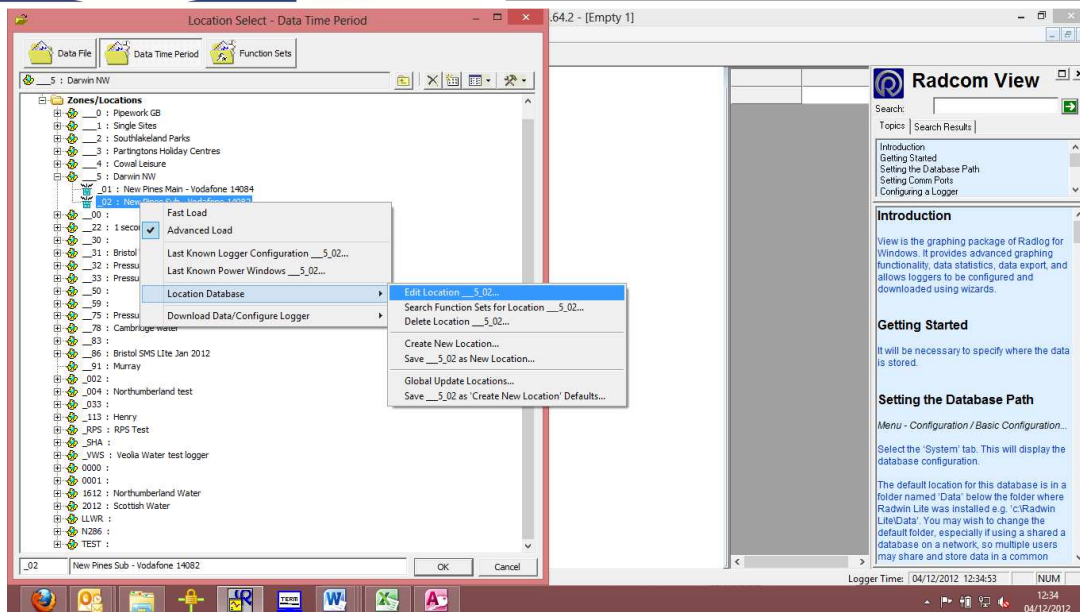
Ref: FAQ0239

Version: 1.0

Title – Radwin how to enter meter reads

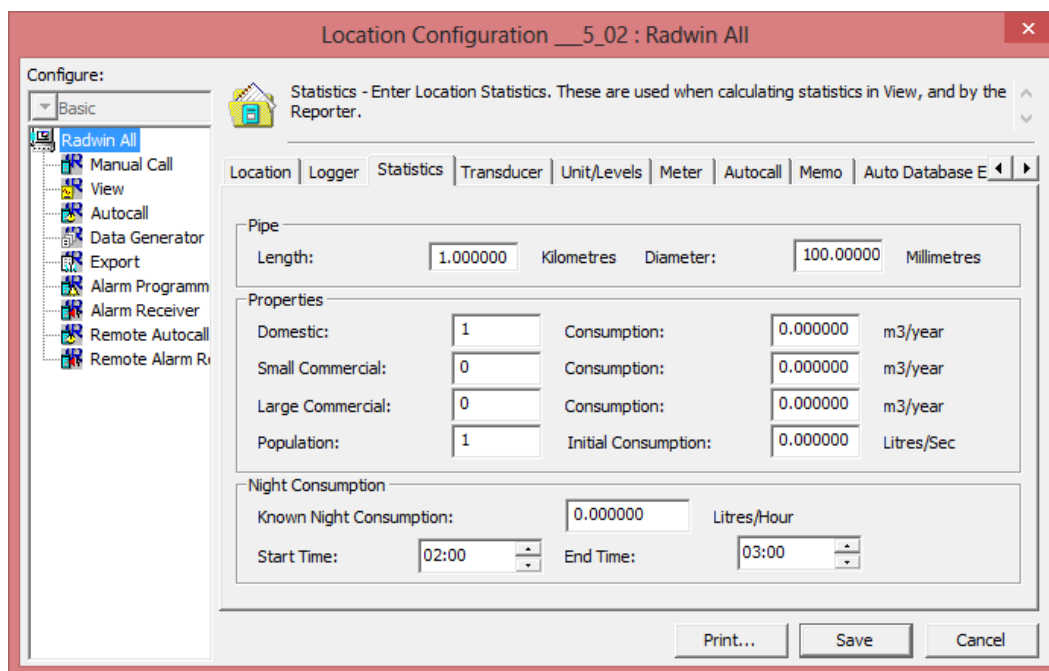
Made By: AB 18/09/15

(Issue 2)



Select Location Database, then select Edit location then pick the Statistics tab (or meter tab for meter readings)

Enter the information as required.



## Document History:

Edition	Date of Issue	Modification	Notes
1st	04/01/13	Release	
2nd	17/09/15	Format update	