



Ref: FAQ0243

Version: 1.0

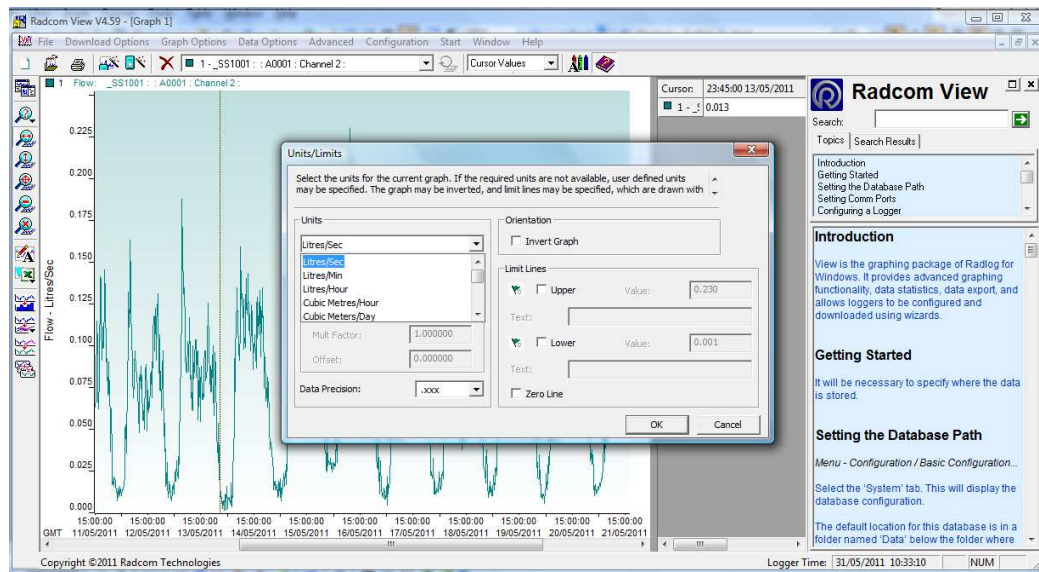
Title-Radwin - how to change graph view units

Made By: AB 18/09/15

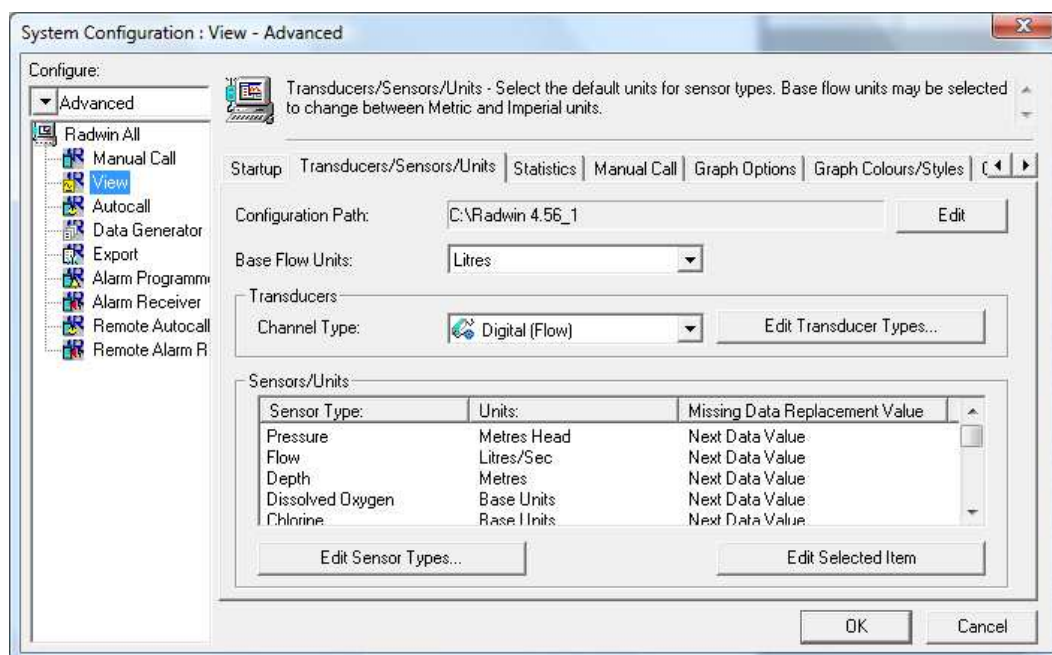
(Issue 2)

## How to change channel units using Radwin Software

1. If you are using Radwin View to look at the graph, go to Data Options > Units/Limits and select the units you require from the drop down then this will only apply those settings to the graph you are looking at (as below)– it will not change the logger settings permanently.



2. In order to change the logger settings permanently you can do it in Radwin by going to Configuration > Advanced configuration> Transducers/Sensors/Units





Ref: FAQ0243

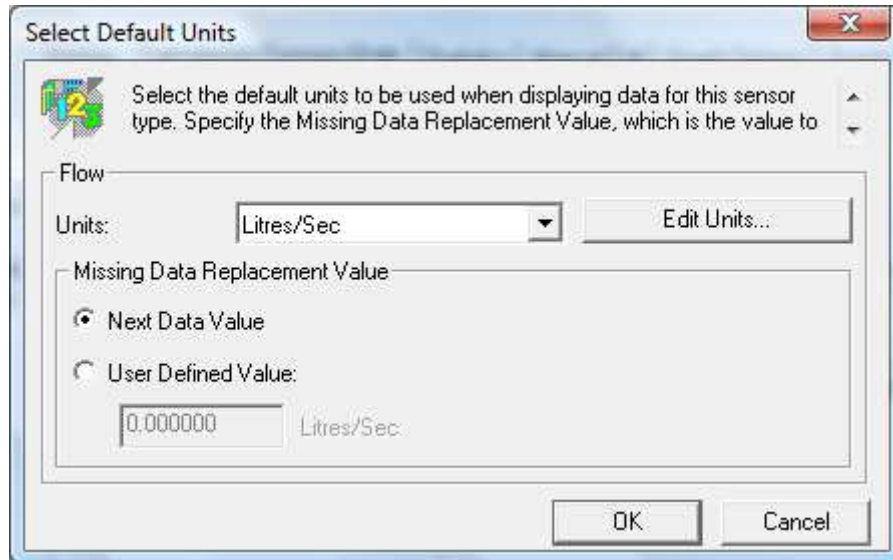
Version: 1.0

Title-Radwin - how to change graph view units

Made By: AB 18/09/15

(Issue 2)

Double click on the unit you want to change –



Select your preferred unit from the drop down and 'OK'



**Ref: FAQ0243**

**Version: 1.0**

**Title-Radwin - how to change graph view units**

**Made By: AB 18/09/15**

**(Issue 2)**

**Document History:**

<b>Edition</b>	<b>Date of Issue</b>	<b>Modification</b>	<b>Notes</b>
1st		Release	
2nd	17/09/15	Format update	