



Ref: FAQ0246

Version: 1.0

Title – Radwin – saving derived graphs

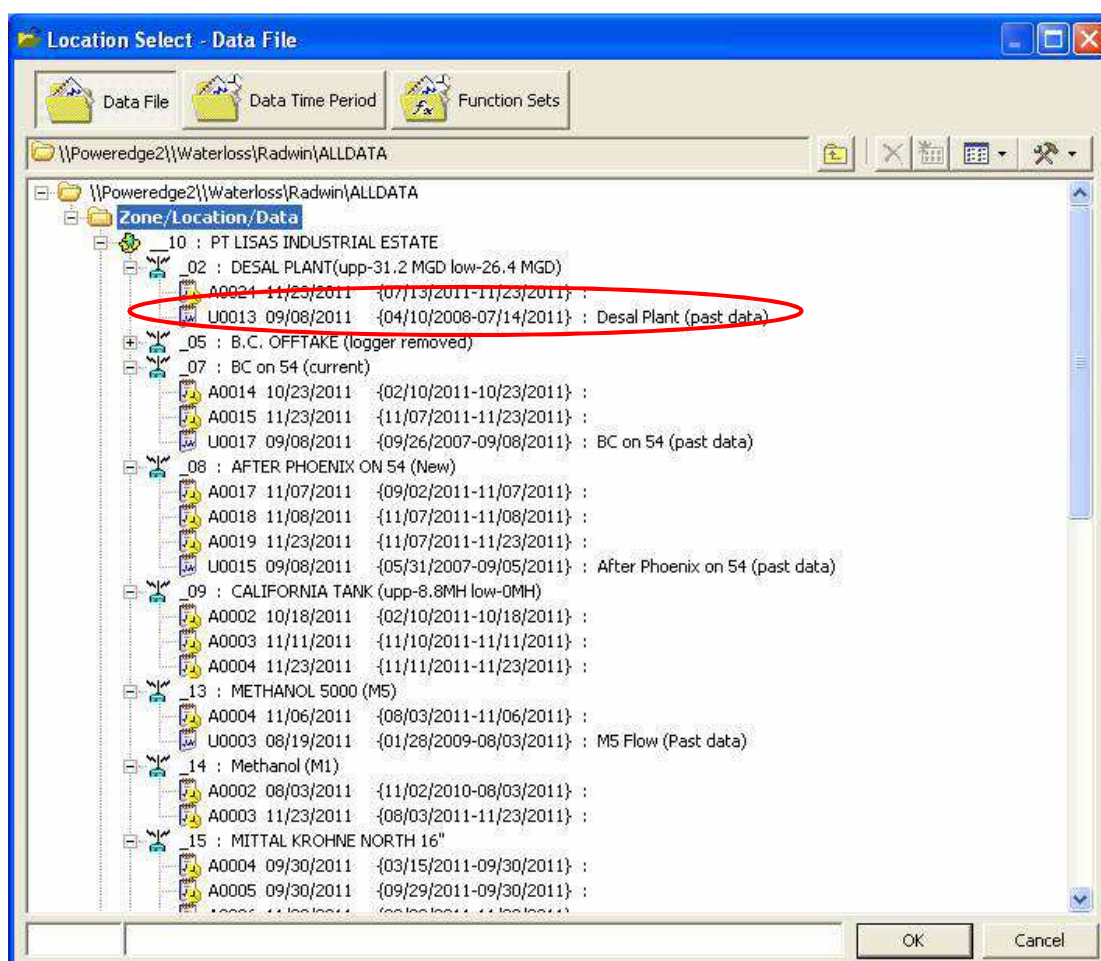
Made By: AB 21/09/15

(Issue 2)

How to save Graphs for future viewing – 'U' Files

Radwin software has the ability to save graphs. Saved graphs are saved as 'U' files. The purpose of this is normally to save a 'derived' graph e.g. if the View function is used to add 2 graphs together the resultant graph can be saved and will create a U file.

Note - U files cannot be converted back to Manual or Archive files as the data is stored in a different format (floating point values, as opposed to raw integer logger values).



Document History:

Edition	Date of Issue	Modification	Notes
1st	02/01/13	Release	
2nd	17/09/15	Format update	