



Ref: FAQ0248

Version: 1.0

Title-Radwin-what do data flags mean

Made By: AB 21/09/15

(Issue 2)

Radwin View – what do data flags and colours mean on graphs

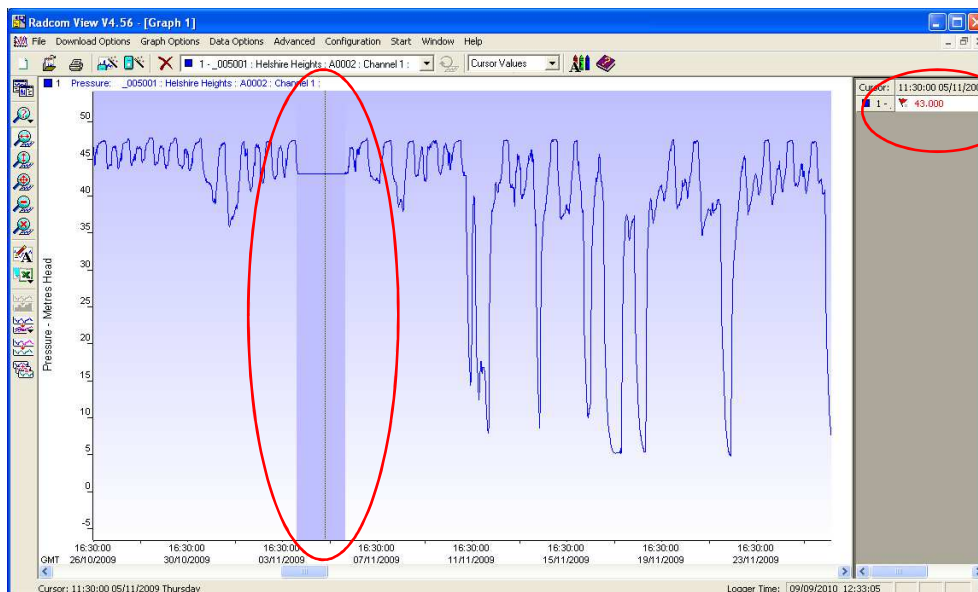
There are 4 different flags which can appear in Radwin which all mean different things.

- Red Flag - Missing data
 - A limit line will need to be enabled and a level entered to create this flag (Data Option menu → Units/Limits...)
- Green Flag - Limit Line level exceedance
 - Data marked as bad by the user (Data Option menu → Data Flags → Bad Data Flags...). The software treats bad data in a similar way to missing data.
- Yellow Flag - Bad Data
 - Data marked/highlighted by the user (Data Option menu → Data Flags → Highlight Data Flags...)

Data Flags Examples:

Red Flag

If there is missing data on a graph, it will be highlighted as missing data by the shaded area. When the cursor is placed over this area, then a Red Flag will display next to the Cursor Value.





Ref: FAQ0248

Version: 1.0

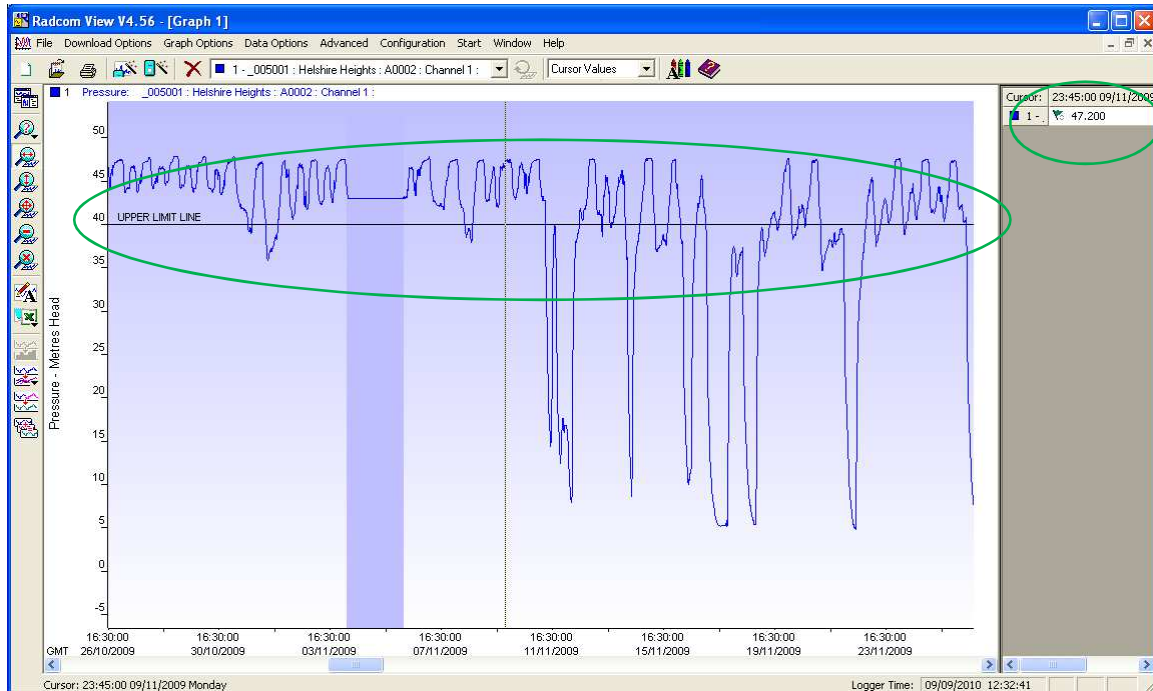
Title-Radwin-what do data flags mean

Made By: AB 21/09/15

(Issue 2)

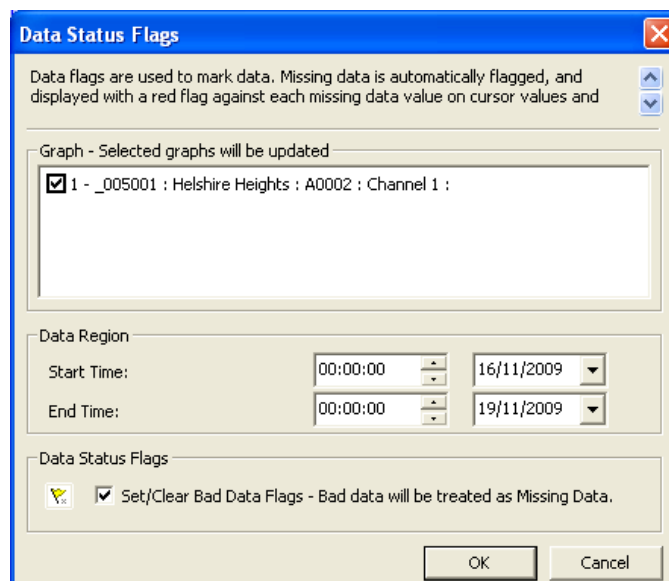
Green Flag

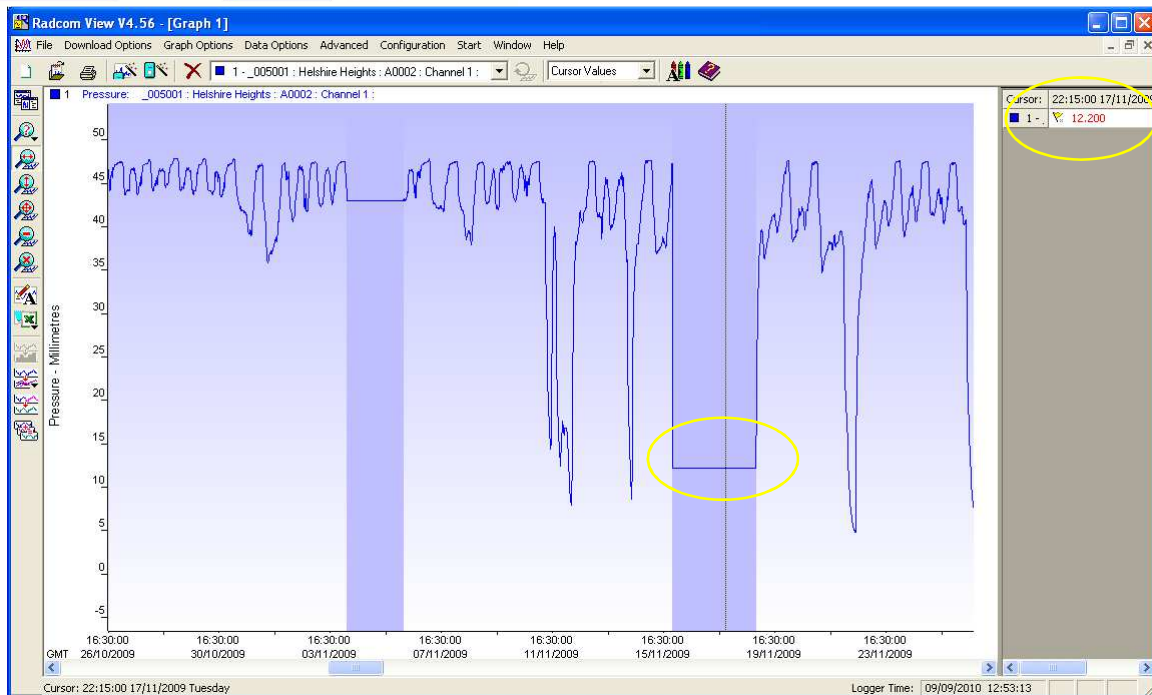
If a Limit Line is added to the graph, and data is above (for Upper Limit) or below (for Lower Limit) the limit lines, then a Green Flag will display next to the Cursor Value.



Yellow Flag

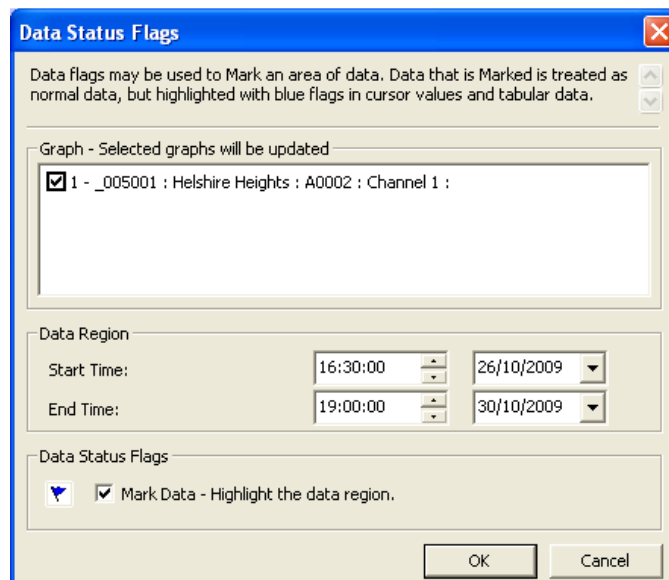
If the data is highlighted by the user by selecting Data Options → Data Flags → Bad Data Flags, then an area of a graph can be marked as bad data (shown as Missing Data). When the cursor is placed over this area, a Yellow Flag will display next to the Cursor Value.





Blue Flag

If the data is highlighted by the user by selecting Data Options → Data Flags → Highlight Data Flags, then an area of a graph can be highlighted/shaded. When the cursor is placed over this area, a Blue Flag will display next to the Cursor Value.



The screenshot shows the 'Data Status Flags' dialog box. It contains the following fields and options:

- Data Status Flags**: A section with a blue flag icon and a checked box labeled 'Mark Data - Highlight the data region.'
- Graph - Selected graphs will be updated**: A list box containing the selected graph: '1 - _005001 : Helshire Heights : A0002 : Channel 1 :'. The checkbox next to it is checked.
- Data Region**: Fields for 'Start Time' (16:30:00) and 'End Time' (19:00:00), along with date dropdowns (26/10/2009 and 30/10/2009).
- Buttons**: 'OK' and 'Cancel' buttons at the bottom.



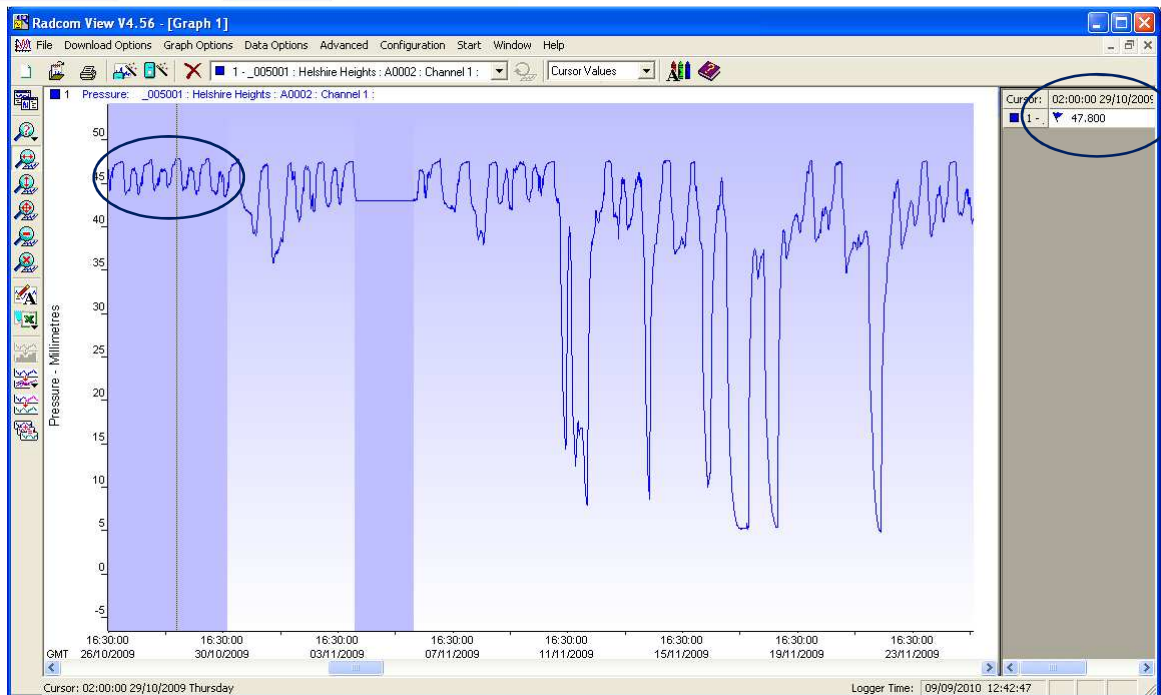
Ref: FAQ0248

Version: 1.0

Title-Radwin-what do data flags mean

Made By: AB 21/09/15

(Issue 2)



Document History:

Edition	Date of Issue	Modification	Notes
1st	03/01/13	Release	
2nd	17/09/15	Format update	