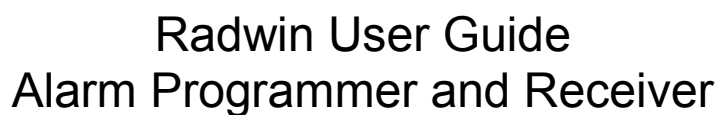




Radwin User Guide Alarm Programmer and Alarm Receiver



Keep this record in the front of the User Manual. When the document has been amended write the amendment number, the date, the paragraph numbers affected by the amendment and your initials in the table below.

[illegible]

Contents

Alarm Programmer and Receiver Basics	4
Running Alarm Programmer and Alarm Receiver	4
Alarm Receiver start up errors	5
Programming Alarm Levels	6
Download Current Alarm Settings	6
Changing the Alarm settings	8
Levels	8
Telephone Numbers to Call	9
Alarm Conditions	11
Uploading to the logger	13
Receiving Alarms	14
Alarm Receiver with messages	15
Audible Warning	16
Options for dealing with an alarm	17
Acknowledge Alarm	17
Export Alarm List	18
Start Other Radwin Programs	19

Alarm Programmer and Receiver Basics

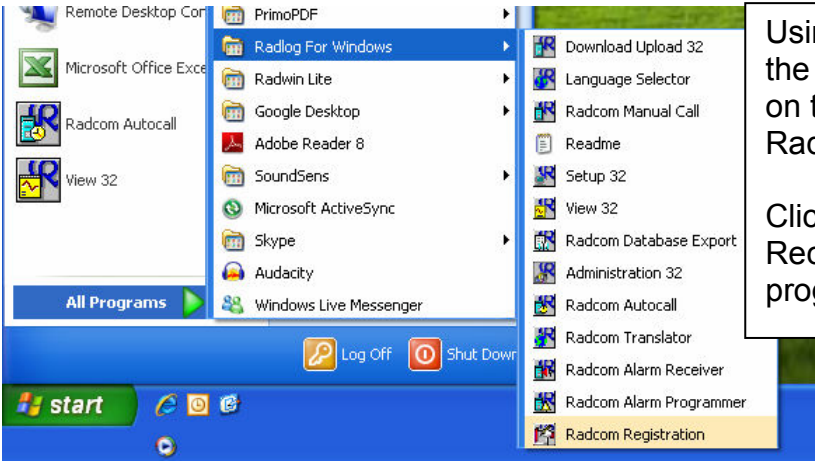
Radcom data loggers can be programmed with Alarm Levels. Be it pressure, flow or any other form of data - when these levels are exceeded the logger will dial (alarm out to) a predetermined phone number (or numbers).

The Alarm Receiver program requires a dedicated phone line and communication port on the PC (usually attached to PSTN a modem). While the Alarm Receiver is running the communication port and modem can not be used by any other program.

Alarms from Multilog LX data loggers are received via an SMS modem through Autocall. Autocall receives the SMS message, and then passes it on to Alarm receiver.

These instructions will guide you through setting alarm levels in a logger, and then illustrating how they will be dealt with in the Radcom software.

Running Alarm Programmer and Alarm Receiver



Using Windows XP you will find the Radwin components you need on the Start Menu >All Programs > Radlog for Windows

Click Alarm Programmer or Alarm Receiver to run the relevant program.

This information window will appear.

Wait a couple of seconds and it will disappear, or click Cancel to remove it from the screen more quickly.



Alarm Programmer
Radcom Alarm Programmer

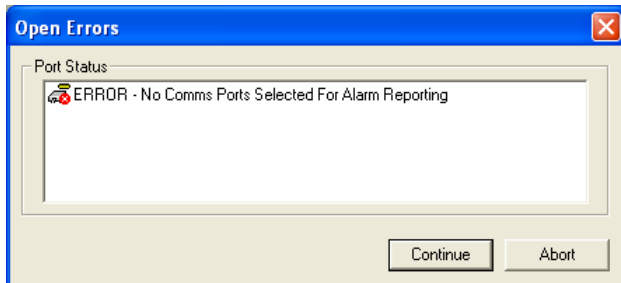
This product is licensed to:
No User License Required

Alarm Receiver
Radcom Alarm Receiver

This product is licensed to:
No User License Required

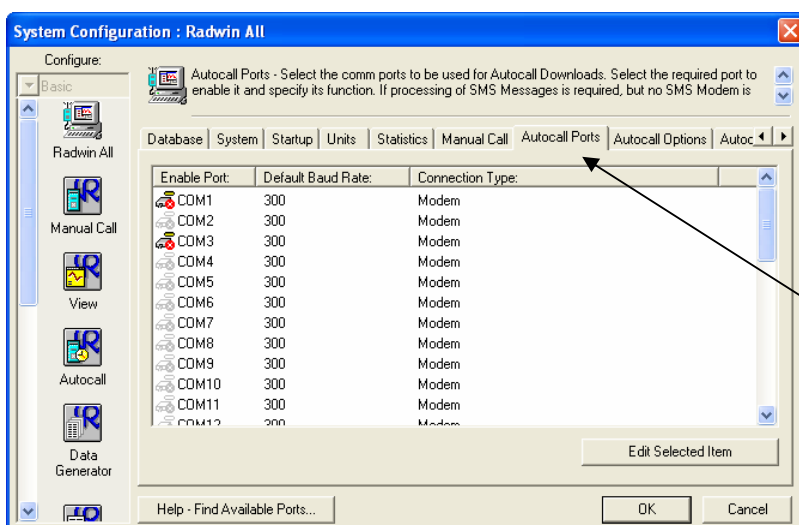
Copyright ©2007 Radcom Technologies Ltd

Alarm Receiver start up errors



When you start Alarm Receiver you may see this error message. This is due to no communication port being selected for Alarm Receiver.

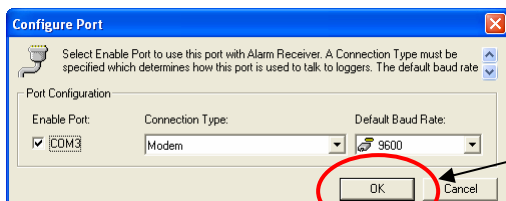
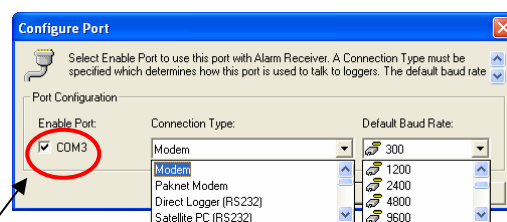
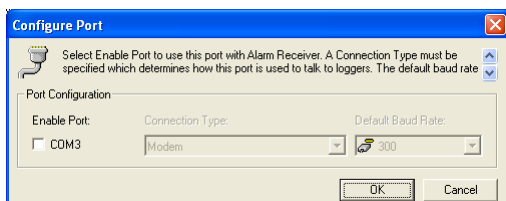
For detailed instructions about setting up ports see the Radwin Setup manual.



Here is a summary of how to fix the problem.

Run Radwin Setup, and from within System Configuration click the Autocall Ports tab.

Double click the communication port which you have allocated to receive alarms. Remember that while alarm receiver is running the port can not be used by any other application.



Enable the port by ticking the box and select the device which will receive the alarms (in this example a modem). The default baud rate should be set to the highest expected.

Click OK to save settings.

Then click OK to close the System Configuration window.

Finally close Radwin Setup and re-run Alarm

Programming Alarm Levels

Download Current Alarm Settings

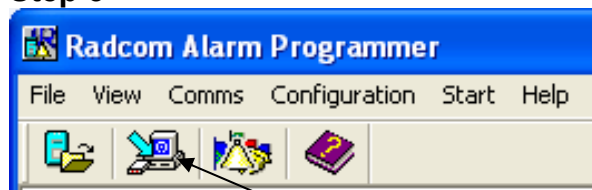
Step 1

Connect your logger to the PC via its direct communication cable.

Step 2

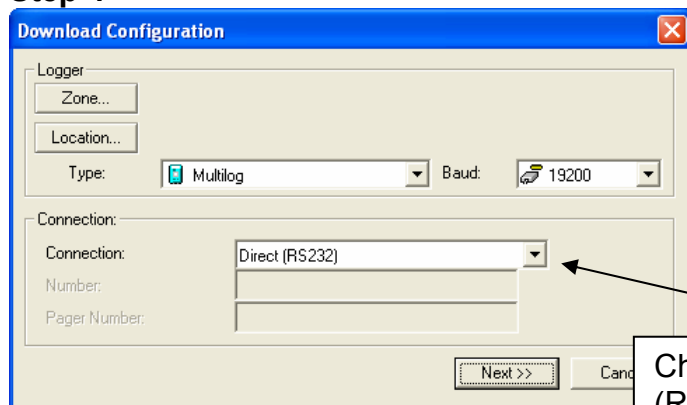
Run Radcom Alarm Programmer.

Step 3



Click the Download Alarm Data icon

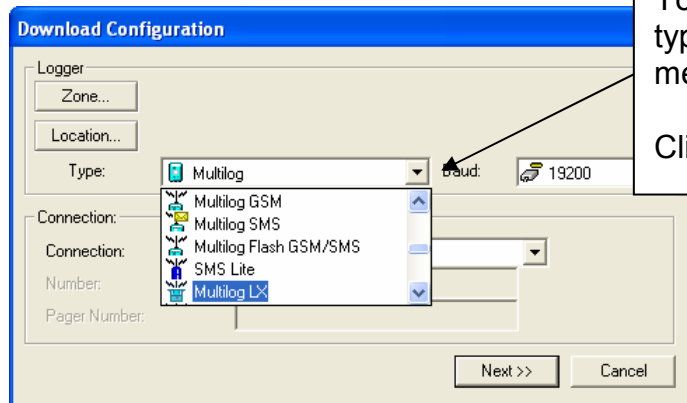
Step 4



Check the connection type is Direct (RS232).

You will need to select the correct logger type and baud rate using the dropdown menus.

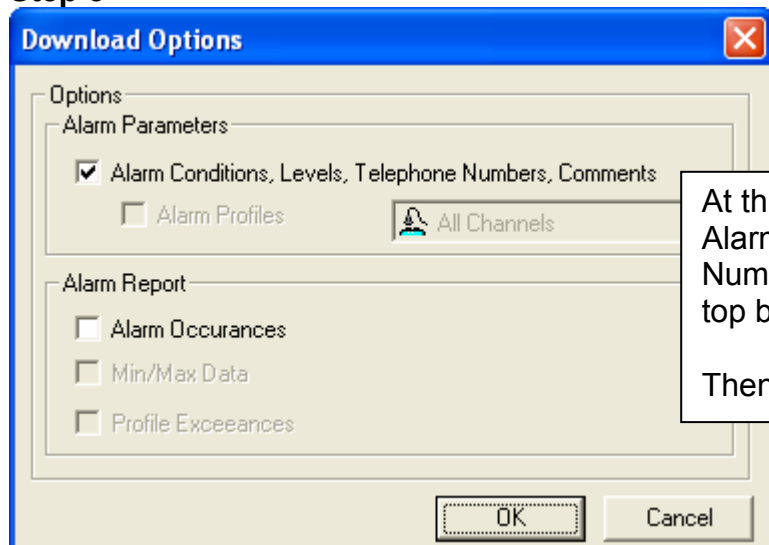
Click Next.



Radwin User Guide

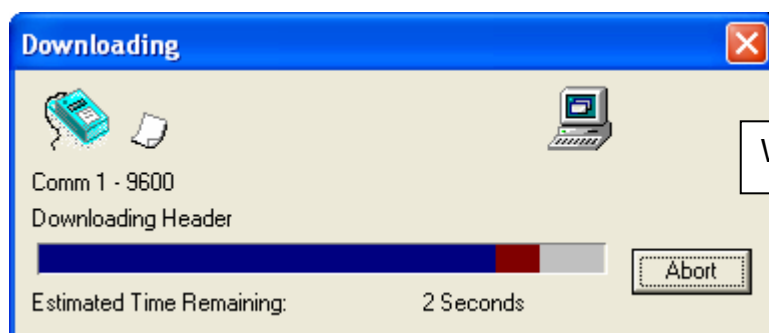
Alarm Programmer and Receiver

Step 5

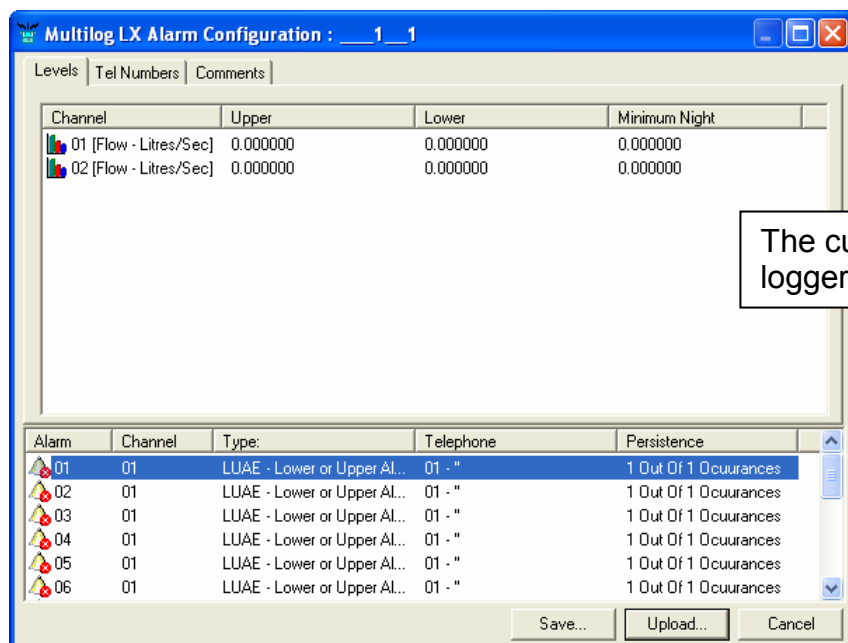


At this stage you only need to download Alarm Conditions, Level, Telephone Numbers and Comments by ticking the top box.

Then click OK



Wait for communications to finish.



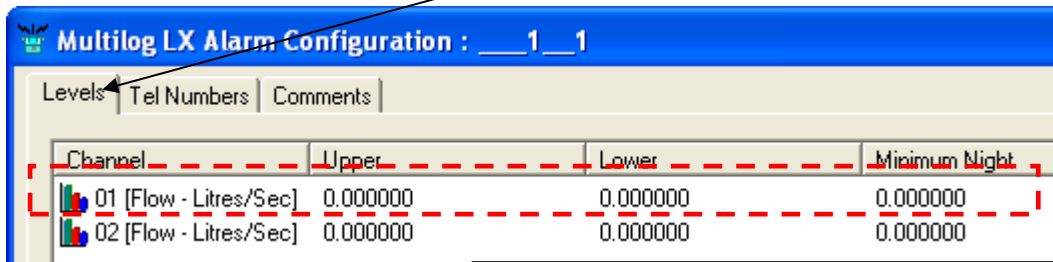
The current alarm settings from the logger will be displayed.

Changing the Alarm settings

Levels

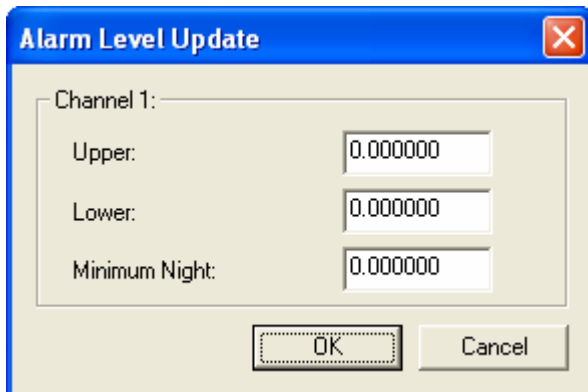
Each recording channel has an upper, lower and minimum night alarm level.

To access the level settings click the Levels tab.



Channel	Upper	Lower	Minimum Night
01 (Flow - Litres/Sec)	0.000000	0.000000	0.000000
02 (Flow - Litres/Sec)	0.000000	0.000000	0.000000

To adjust the alarm level settings on a channel double click anywhere on its settings as shown above.



Channel 1:

Upper: 0.000000

Lower: 0.000000

Minimum Night: 0.000000

OK Cancel

To change the alarm level figures just click in the text box and edit the number. Then click OK.

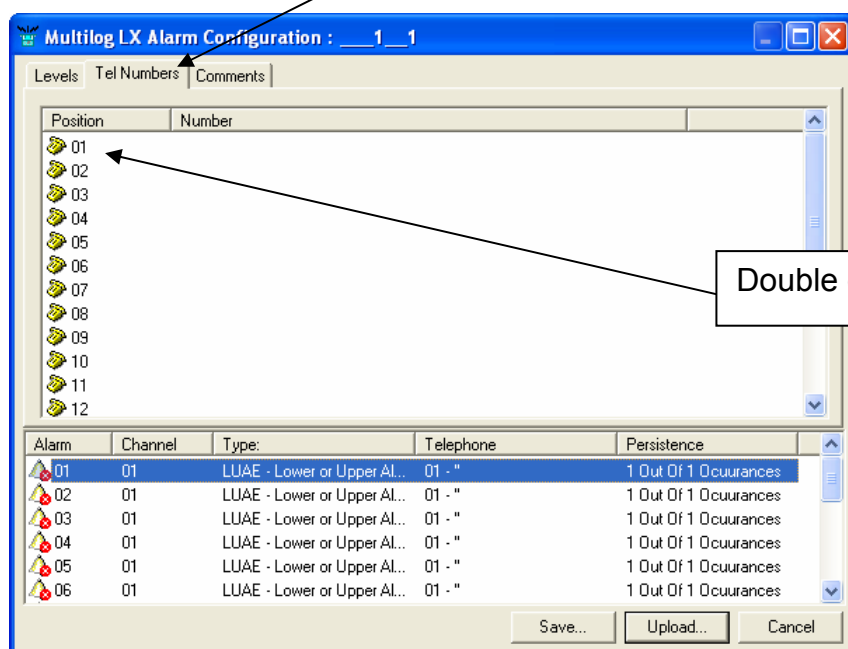
Radwin User Guide

Alarm Programmer and Receiver

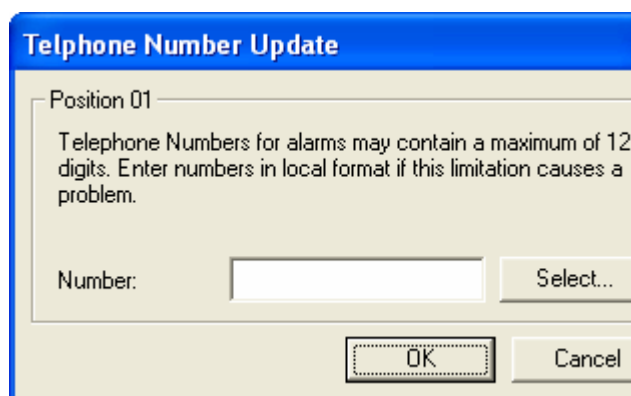
Telephone Numbers to Call

The logger can alarm out to several different numbers. If the logger alarms out to a PC running Alarm Receiver, then the information will be processed by Radwin. If you program a normal mobile phone number into the list then it will be called or receive a text message with alarm information depending on what type of logger is alarming out.

To access the alarm out telephone numbers click the Tel Numbers tab



Double click on the first empty line.



Type in the number you would like the logger to alarm out to.

The number should start with "0" and not "+44". Change the format of your number if required.

If you make use of the Phone Book in Radwin then you can click Select, and pick the phone number you need.

Then click OK

Continued...

Radwin User Guide

Alarm Programmer and Receiver

Multilog LX Alarm Configuration : __1__1

Levels Tel Numbers Comments

Position	Number
01	07788778877
02	
03	
04	
05	
06	
07	
08	
09	
10	
11	
12	

Alarm	Channel	Type:	Telephone
01	01	LUAE - Lower or Upper AL...	01 - '07788778877'
02	01	LUAE - Lower or Upper AL...	01 - '07788778877'
03	01	LUAE - Lower or Upper AL...	01 - '07788778877'
04	01	LUAE - Lower or Upper AL...	01 - '07788778877'
05	01	LUAE - Lower or Upper AL...	01 - '07788778877'
06	01	LUAE - Lower or Upper AL...	01 - '07788778877'

1 Out Of 1 Occurances
1 Out Of 1 Occurances

Save... Upload... Cancel

If you wish to program more than one number just click the next available empty line and follow the instruction as previously stated in this section.

For Radwin to be able to process the messages one of these numbers must be the modem on the PC which runs Alarm Receiver.

Multilog LX Alarm Configuration : __1__1

Levels Tel Numbers Comments

Position	Number
01	07788778877
02	07777888888
03	
04	
05	
06	
07	
08	
09	
10	
11	
12	

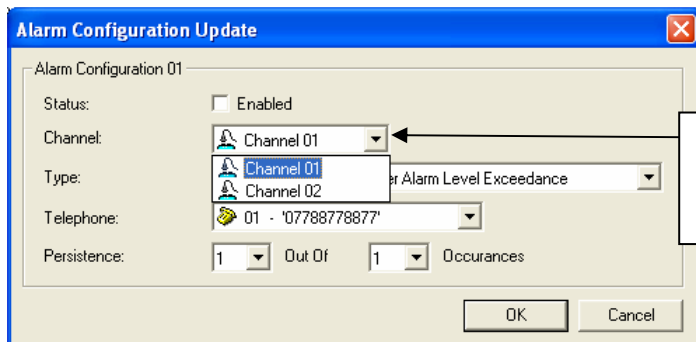
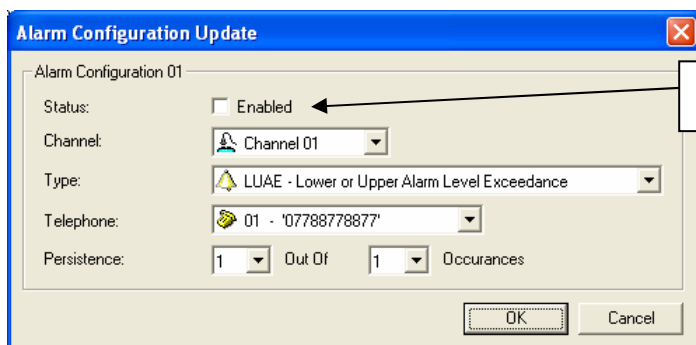
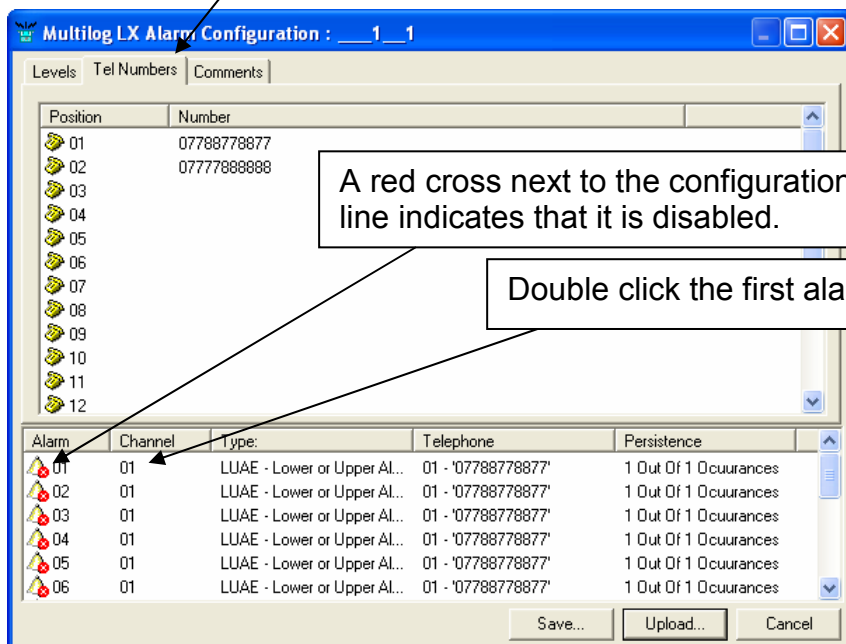
Alarm	Channel	Type:	Telephone	Persistence
01	01	LUAE - Lower or Upper AL...	01 - '07788778877'	1 Out Of 1 Occurances
02	01	LUAE - Lower or Upper AL...	01 - '07788778877'	1 Out Of 1 Occurances
03	01	LUAE - Lower or Upper AL...	01 - '07788778877'	1 Out Of 1 Occurances
04	01	LUAE - Lower or Upper AL...	01 - '07788778877'	1 Out Of 1 Occurances
05	01	LUAE - Lower or Upper AL...	01 - '07788778877'	1 Out Of 1 Occurances
06	01	LUAE - Lower or Upper AL...	01 - '07788778877'	1 Out Of 1 Occurances

Save... Upload... Cancel

Example:
Alarm programmer with two telephone numbers listed

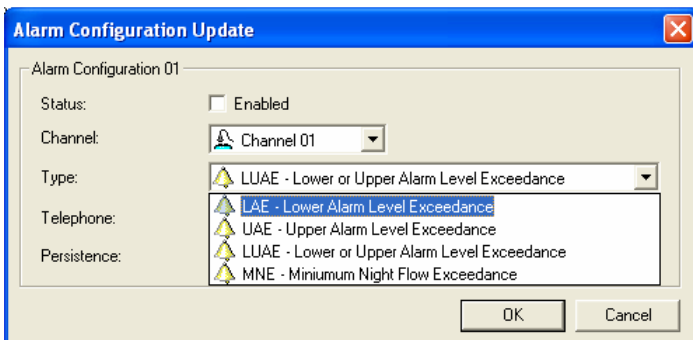
Alarm Conditions

Having programmed phone numbers into the logger, you also need to set the alarm conditions which will cause the numbers will be dialled. These alarm levels are accessed from the Tel Number tab.



Radwin User Guide

Alarm Programmer and Receiver



Alarm Configuration Update

Alarm Configuration 01

Status: ☐ Enabled

Channel: Channel 01

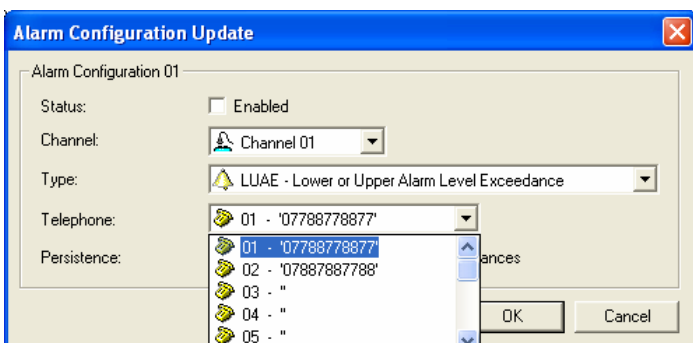
Type: LUAE - Lower or Upper Alarm Level Exceedance

Telephone: LUAE - Lower Alarm Level Exceedance

Persistence: LUAE - Lower or Upper Alarm Level Exceedance

OK Cancel

Pick the type of exceedance which will cause this alarm.



Alarm Configuration Update

Alarm Configuration 01

Status: ☐ Enabled

Channel: Channel 01

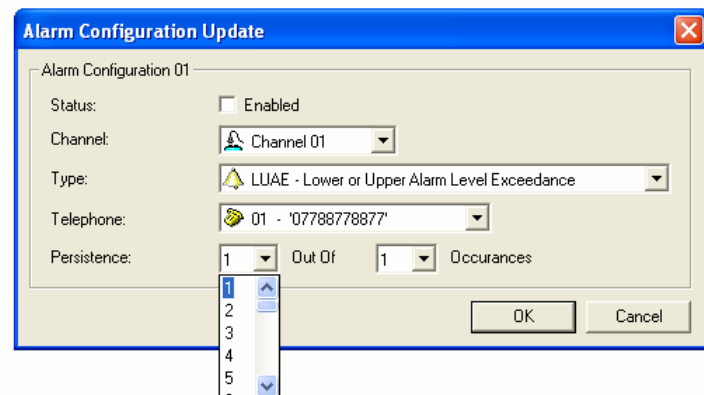
Type: LUAE - Lower or Upper Alarm Level Exceedance

Telephone: 01 - '07788778877'

Persistence: 01 - '07788778877'

OK Cancel

If you have programmed in more than one phone number you can pick which one the logger will send a message to.



Alarm Configuration Update

Alarm Configuration 01

Status: ☐ Enabled

Channel: Channel 01

Type: LUAE - Lower or Upper Alarm Level Exceedance

Telephone: 01 - '07788778877'

Persistence: 1 Out Of 1 Occurances

OK Cancel

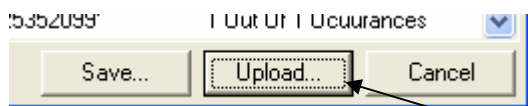
Select how persistent the alarm level has to be before the logger alarms out.

Click OK to finish

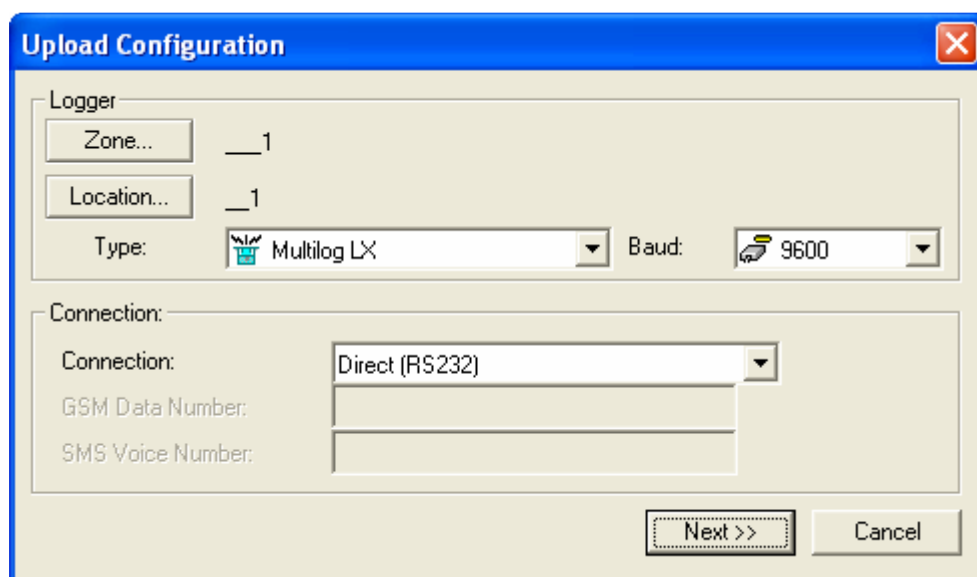
An enabled alarm will not have a red cross next to it.

Alarm	Channel	Type:	Telephone	Persistence
 01	01	UAE - Upper Alarm Level ...	02 - '07887887788'	1 Out Of 1 Occurances
 02	01	LUAE - Lower or Upper Al...	01 - '07788778877'	1 Out Of 1 Occurances
 03	01	LUAE - Lower or Upper Al...	01 - '07788778877'	1 Out Of 1 Occurances
 04	01	LUAE - Lower or Upper Al...	01 - '07788778877'	1 Out Of 1 Occurances
 05	01	LUAE - Lower or Upper Al...	01 - '07788778877'	1 Out Of 1 Occurances

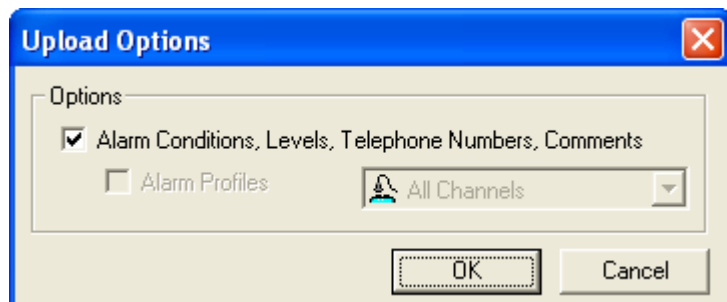
Uploading to the logger



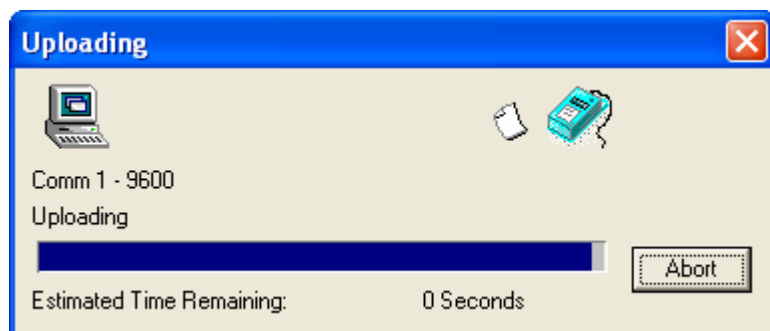
Click Upload to send the settings to the logger.



Click Next



Click OK



Wait for upload to finish

When uploading has finished you will be returned to the main Alarm Programmer window, and the conditions you have set will cause the logger to alarm out when they are exceeded.

Receiving Alarms

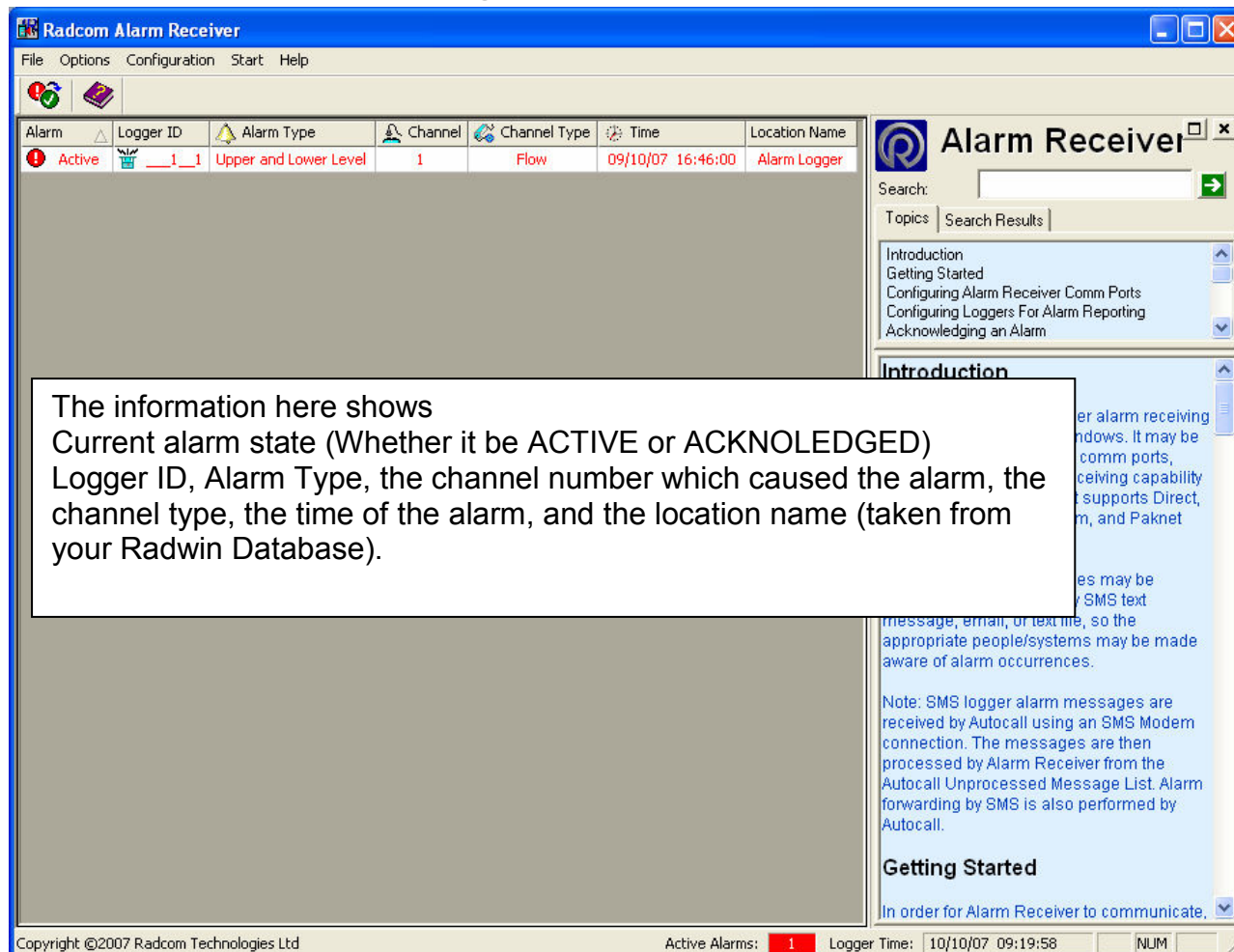
Alarm Receiver must be running to receive alarm messages. Without alarm receiver running Radwin will not be able to process messages. Ideally Alarm Receiver should be left running at all times.



Radwin User Guide

Alarm Programmer and Receiver

Alarm Receiver with messages



The information here shows
Current alarm state (Whether it be ACTIVE or ACKNOLEDGED)
Logger ID, Alarm Type, the channel number which caused the alarm, the channel type, the time of the alarm, and the location name (taken from your Radwin Database).

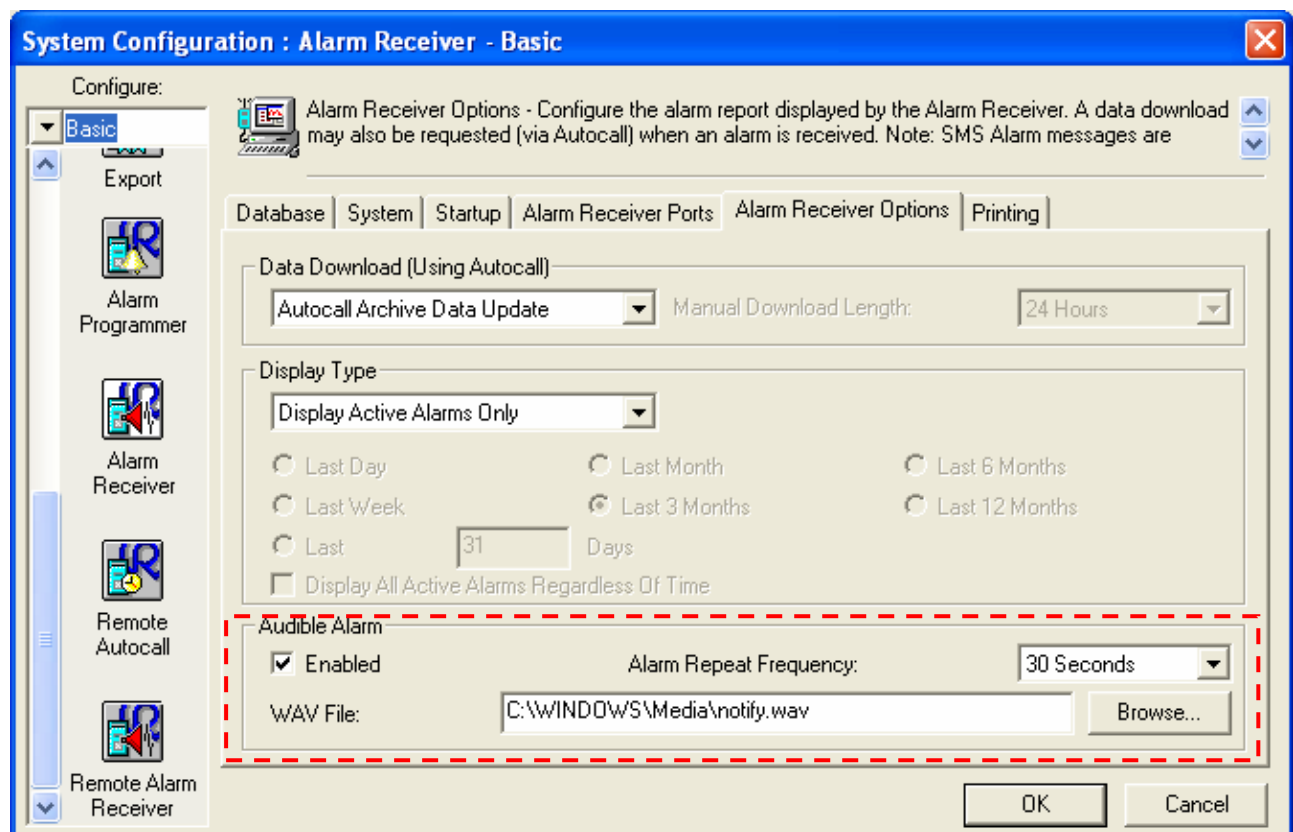
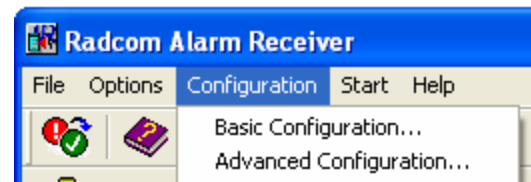
Copyright ©2007 Radcom Technologies Ltd

Active Alarms: 1 Logger Time: 10/10/07 09:19:58

Audible Warning

If an alarm is received you can set the Alarm Receiver program to make an audible warning sound (working sound card and speakers required).

From the Configuration menu select Basic Configuration



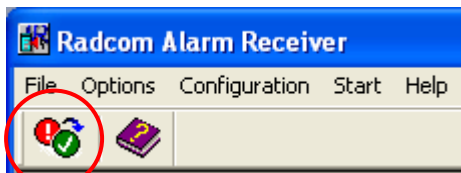
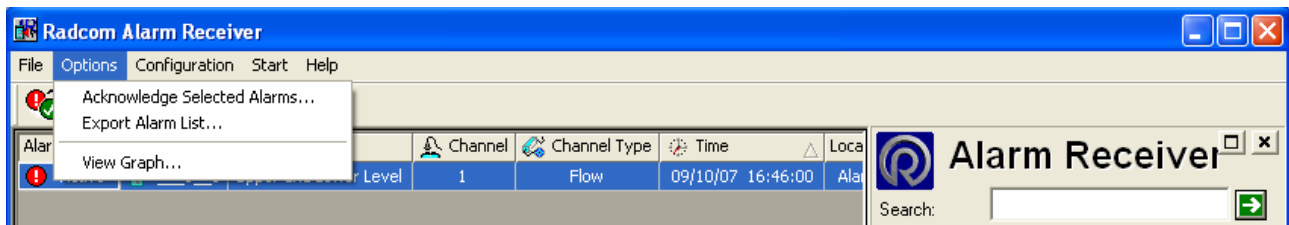
Alarm Receiver will play any WAV file as an audible alarm.

Tick the “Enabled” box and use the Browse button to select a WAV file. Select a repeat frequency from the drop down menu and the click OK.

When alarm messages are received the selected WAV file will play, and will be repeated at the interval you selected.

Options for dealing with an alarm

Acknowledge Alarm



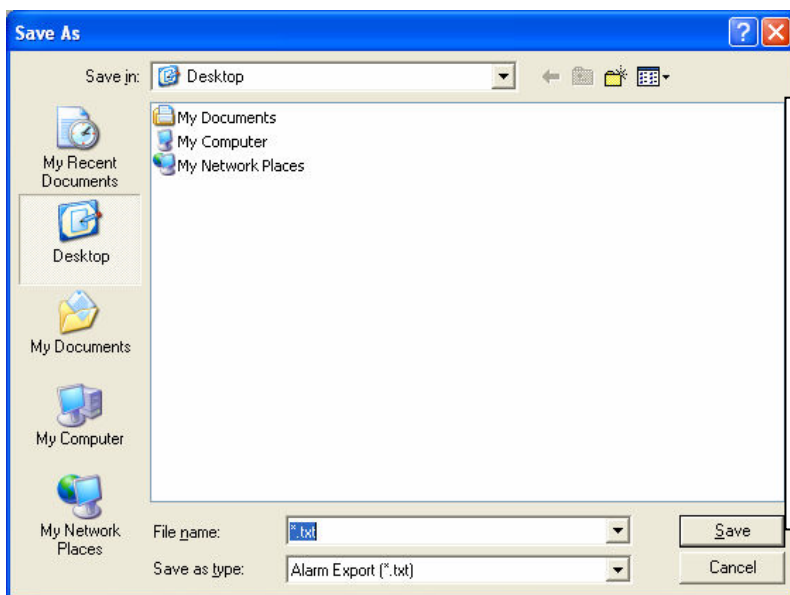
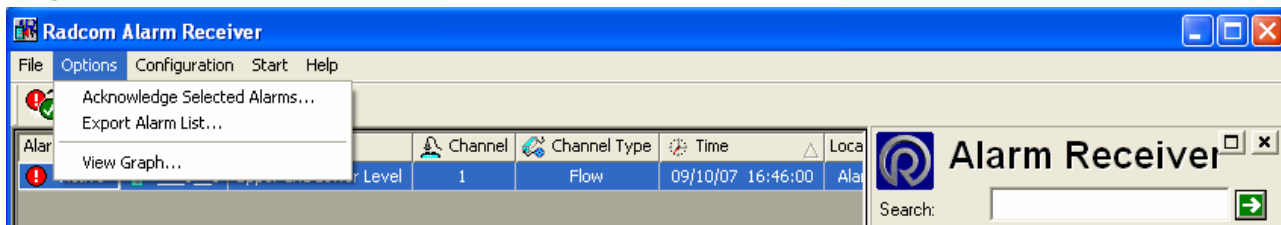
Select the alarm line to highlight it. Then pick Acknowledge Selected Alarms from the Options menu.

Or

Select the alarm line to highlight it, and then click the Acknowledge Alarms icon.

Multiple lines can be selected if required.

Export Alarm List



From the Options menu select Export Alarm List.

The window which pops up will enable you to save the alarm list as a text file.

The text file can then be imported to excel or any such program which accepts this type of data.

Example exported alarm list...

Alarm State	Logger ID	Alarm Type	Channel	Channel Type	Time	Location Name
Active	__1__1	Upper and Lower Level	1	Flow	09/10/07 16:46:00	Alarm Logger

Start Other Radwin Programs

Click the Start Menu at the top of the main Setup screen.
Click the component you need to use.

