



Ref: FAQ0253

Version: 1.0

Title-Radwin SMS -remote check alarms

Made By: AB 21/09/15

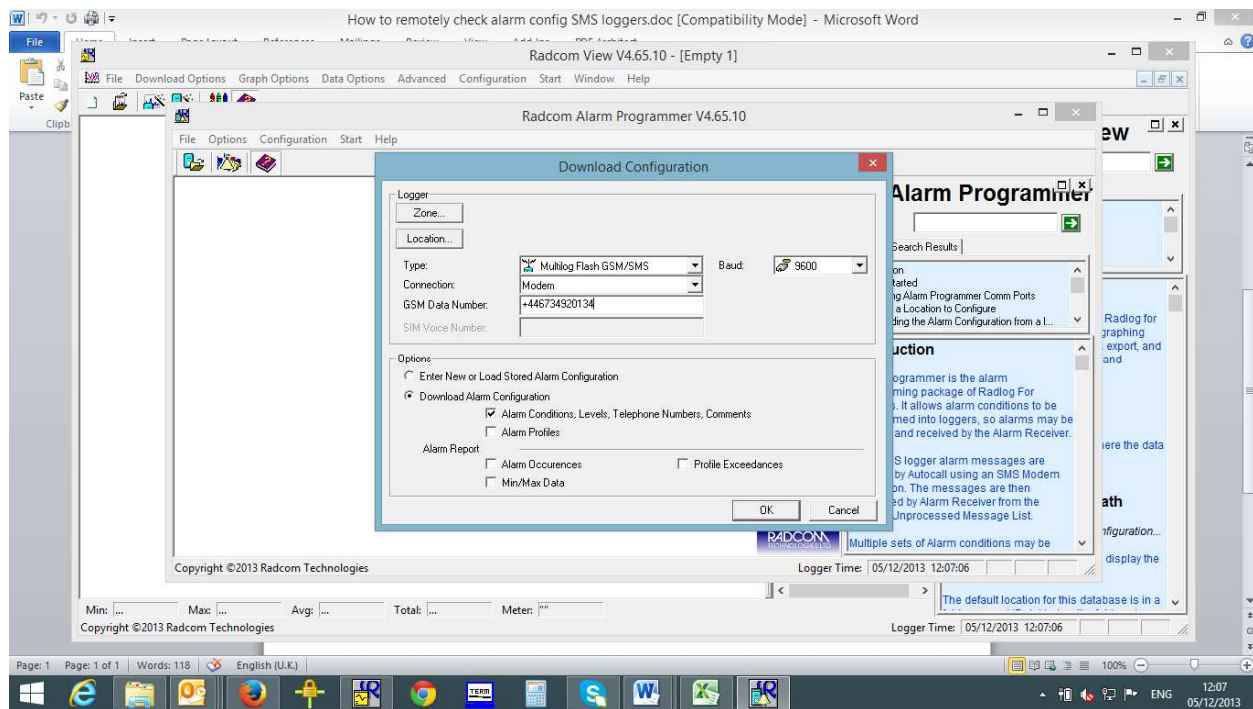
(Issue 2)

Radcom SMS dataloggers – how to remotely check and change alarm configuration

To remotely recover the alarm settings from an SMS Multilog logger you can contact the logger using the Radwin software Alarm Programmer module and a desktop modem during the loggers power window (or at 3.00pm GMT - the 6 minute Engineering power window which every logger has).

In Alarm Programmer select Options, Download Configuration and from the screen select the correct logger type, connection type as Modem, enter the logger phone number in the GSM data number box and tick the download Alarm Configuration box. Then select 'OK' and the logger will be dialled and the alarm config downloaded.

If required you can change the alarm settings the same way (select Enter new or load stored alarm configuration box from the same screen)



Document History:

Edition	Date of Issue	Modification	Notes
1st	02/01/13	Release	
2nd	17/09/15	Format update	