



Ref: FAQ0256

Version: 1.0

Title – Radwin alarms – dual frequency

Made By: AB 21/09/15

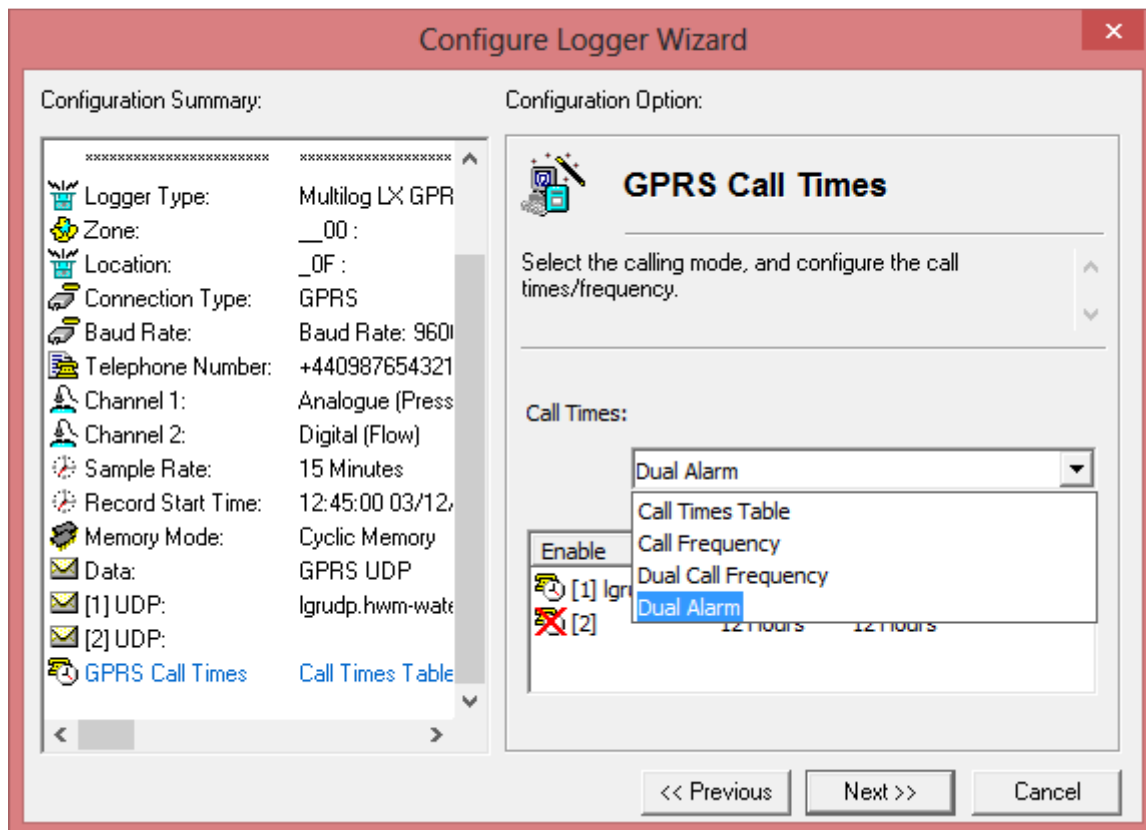
(Issue 2)

Radwin alarms – configuration for dual frequency call ins for alarms

The logger goes into more frequent sending rate when critical situations arise sending data/alarms more often. - the logger sampling rate doesn't change. It is the dial in rate that does. It's actually the Logger that does this so it can now accelerate dial-in at alarm level for many other applications – SonicSens, Flow, Pressure – in fact anything you have set an alarm for.

You could set accelerated dial in to 5 minutes on alarm but you would need to set the sample rate generally to 5 minutes in order to get new (different) data each time.

When configuring the logger, at the 'GPRS Call Times' screen select 'Dual alarm' and double click it from the drop down –



Document History:

Edition	Date of Issue	Modification	Notes
1st	02/01/15	Release	
2nd	17/09/15	Format update	