



Ref: FAQ0261

Version: 1.0

Title – Datagate – configure autocall

Made By: AB 21/09/15

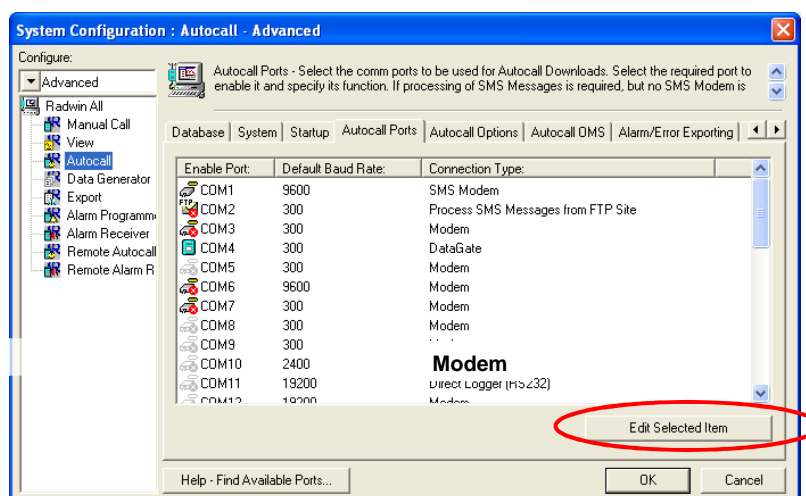
(Issue 2)

How to configure Radwin Autocall to download data from loggers calling into Datagate

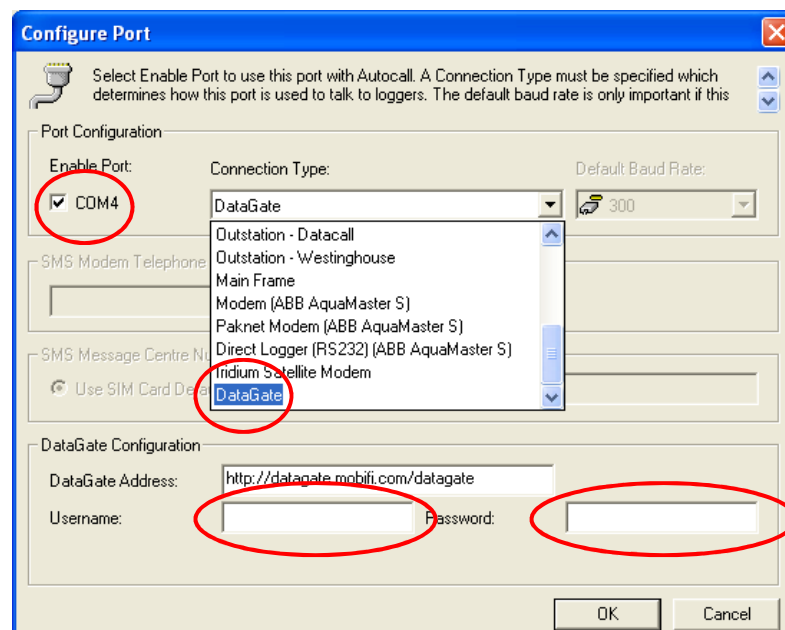
First set up Radwin Autocall as follows -

In Radwin Setup > System configuration > Autocall ports

Select a free port (highlight it and then click 'Edit Selected Item')



In 'Edit Selected Item' Screen then select Datagate from the connection Type drop down.



Click on Enable port (tick the box)



Ref: FAQ0261

Version: 1.0

Title – Datagate – configure autocall

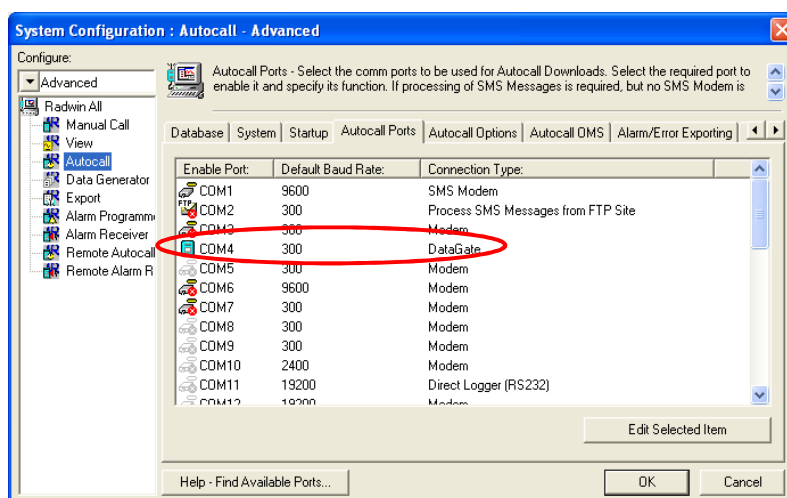
Made By: AB 21/09/15

(Issue 2)

Enter your Datagate account details in Username and Password. (These should have been supplied to you)

Press 'OK'

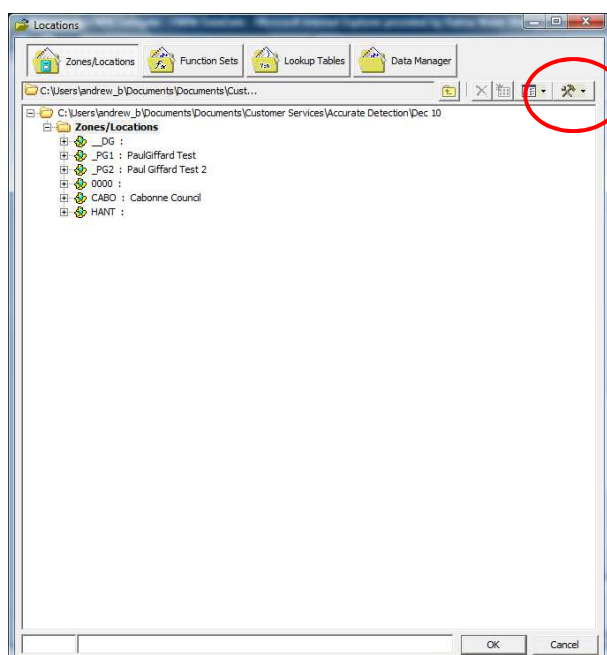
You then should see :



Note the Com port is 'active' with a coloured Icon against it.

Now you need to set up the loggers in your Database – **only if they are not already there.**

In Set up > Options > Item configuration you should now see your logger database as below.



If your logger details are not here then you need to enter your logger details as follows.
You may need to add a new Zone (or you can add your logger to an existing Zone.)



Ref: FAQ0261

Version: 1.0

Title – Datagate – configure autocall

Made By: AB 21/09/15

(Issue 2)

To enter a new zone –

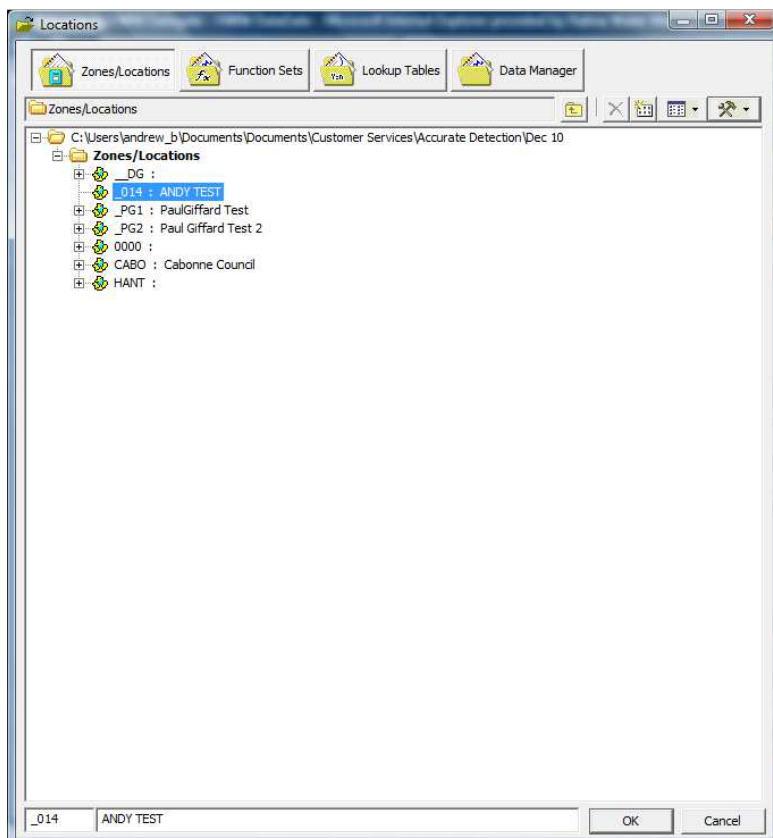
Click on the ‘Hammer & Sicle’ icon (see screen shot above)

Then select ‘Create New Zone’ to reveal this screen shot

A screenshot of the 'Create Zone' dialog box. It has a title bar 'Create Zone' and a close button. Inside, there is a message: 'Enter the required identity and name for the Zone. If the zone already exists it will get updated.' Below this, there are two input fields: 'Identity:' with the value '014' and 'Name:' with the value 'ANDY TEST'. At the bottom right, there are 'Save' and 'Cancel' buttons.

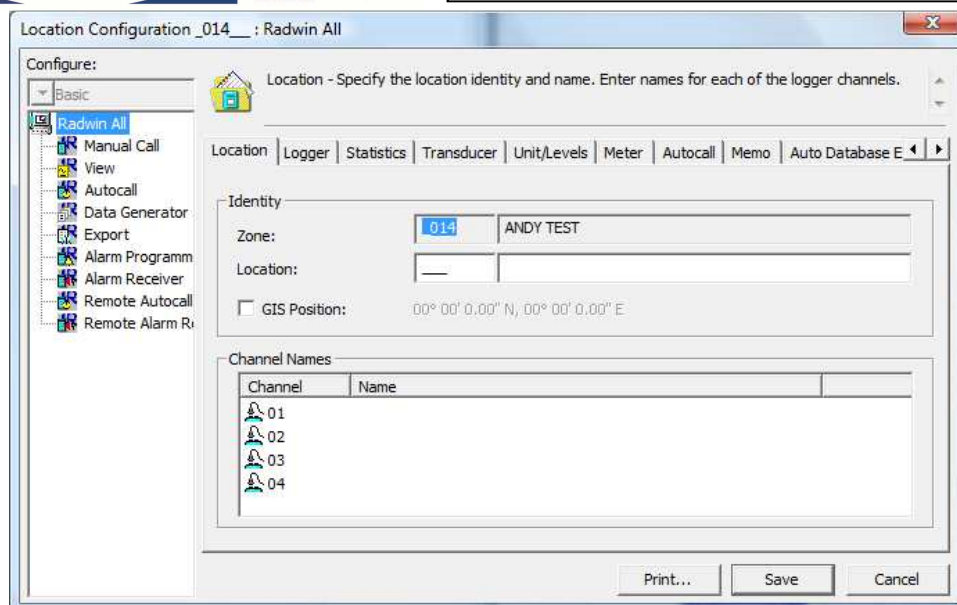
Enter your Zone I/D and Name and then ‘Save’.

You should now see the new Zone in the list as below.



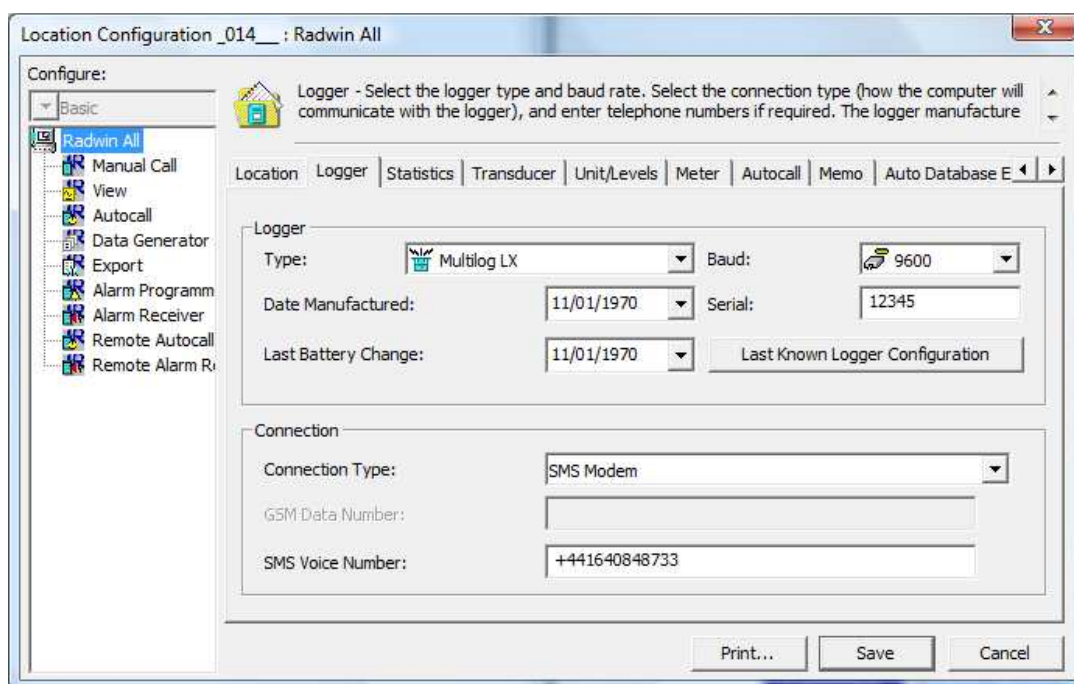
Highlight the new Zone and select the ‘Hammer and Sicle’ Icon again
This time select ‘Create New Location’

You should now see this screen (below)



First enter your location description (numerical and alphanumeric descriptions)

Then select the logger tab.



Fill in the logger details as accurately as possible.

Logger type from the drop down

Baud is automatically filled from the logger type selected above

Serial number is on the logger label

Connection type – select SMS Modem from the drop down



Ref: FAQ0261

Version: 1.0

Title – Datagate – configure autocall

Made By: AB 21/09/15

(Issue 2)

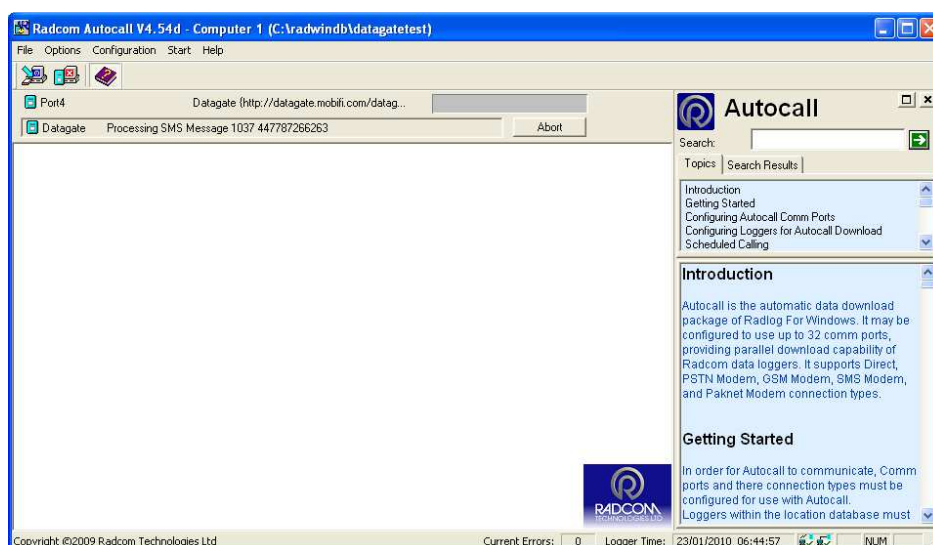
SMS Voice number – be sure to enter the correct logger phone number in international format (+44 drop the zero) **DOUBLE CHECK THIS NUMBER IS CORRECT**

Then select 'Save'.

Repeat this process for each of your loggers.

Once complete then Start Autocall

This will process all the available data messages from Datagate relating to your loggers.



Then use Radwin View to select each of your loggers and view the data.

Document History:

Edition	Date of Issue	Modification	Notes
1st	02/01/13	Release	
2nd	17/09/15	Format update	