



Ref: FAQ0263

Version: 1.0

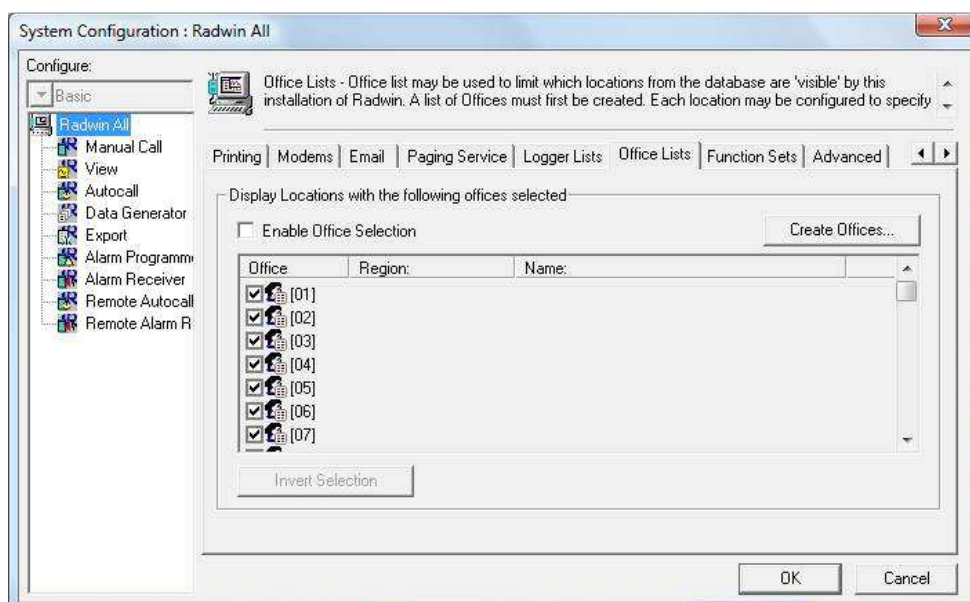
Title – Radwin Admin – set up offices

Made By: AB 21/09/15

(Issue 2)

How to control access to certain logger data in Radwin by using the Admin module to set up 'Offices'

This guide describes how to select only a few loggers from a large database in Radwin. This below shows you how a particular person using Radwin on his/her PC can view only a certain number of loggers within the main database (which may be held on a server). To do this - If you open Radwin software and in Radwin Set Up > System Configuration > Office lists you should see the screen shot below.



This enables you to set up a series of 'Offices' relating to your preferred groups of loggers. (remember to tick the Enable Office Selection box when you have set up the offices)

If you then Open the main database through Radwin View – go to the loggers you want in a specific 'office,' highlight the logger, right click on it, select Location Database and then Edit location to reveal the below screen shot and associate the required logger with your preferred Office. Do this for each of the loggers concerned.



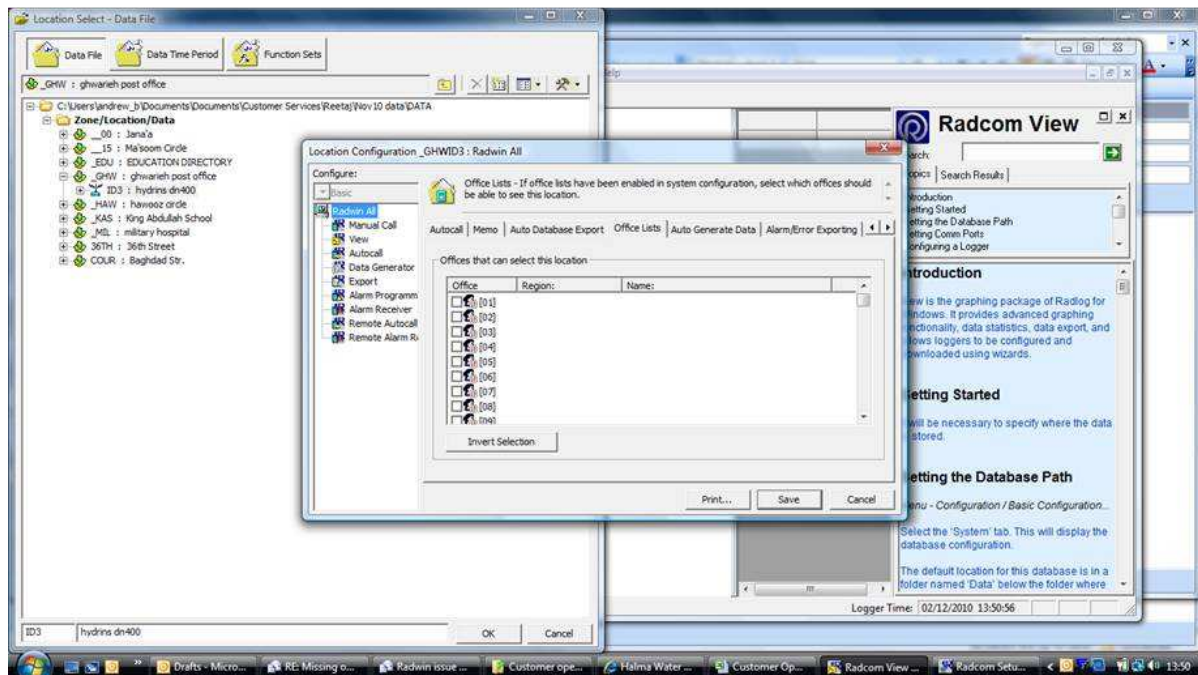
Ref: FAQ0263

Version: 1.0

Title – Radwin Admin – set up offices

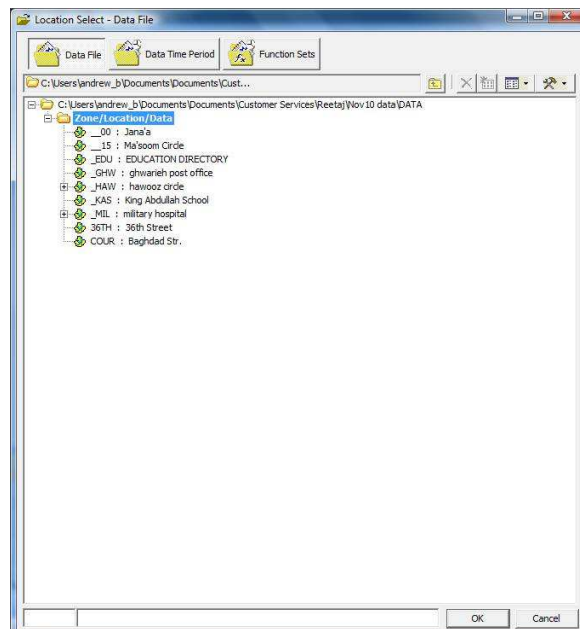
Made By: AB 21/09/15

(Issue 2)



I selected two in the example above – now when I open the database in View –

I can only see the two loggers I have associated with ‘my office’ – the ones with the crosses beside them in the screen shot below –



Document History:

Edition	Date of Issue	Modification	Notes
1st	02/01/13	Release	
2nd	17/09/15	Format update	