



Ref: FAQ0265

Version: 1.0

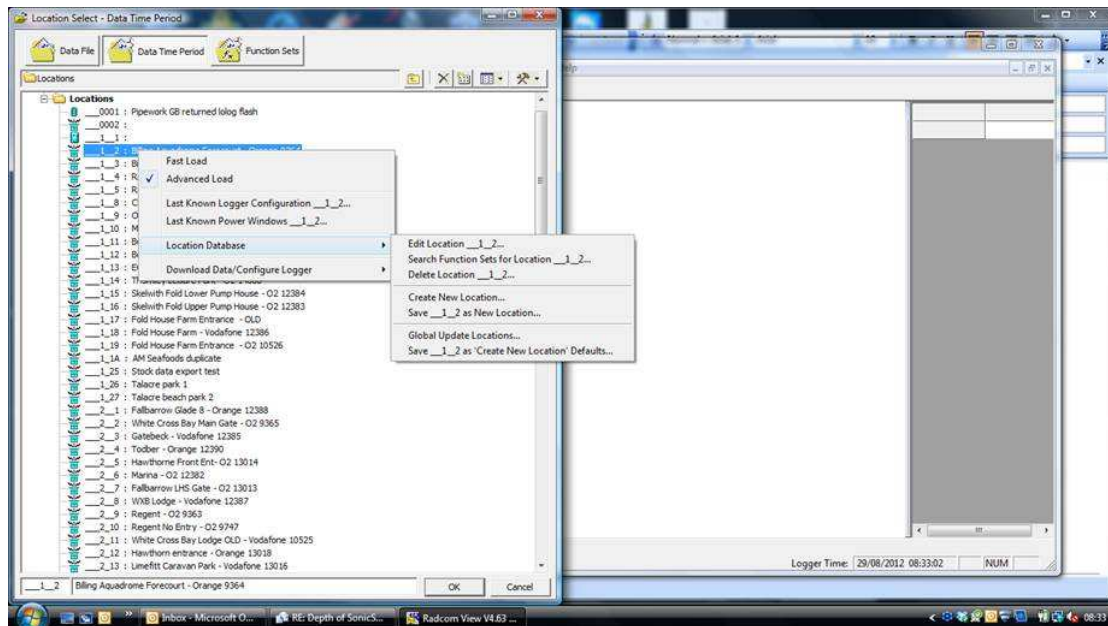
Title-Radwin Database-change logger config

Made By: AB 21/09/15

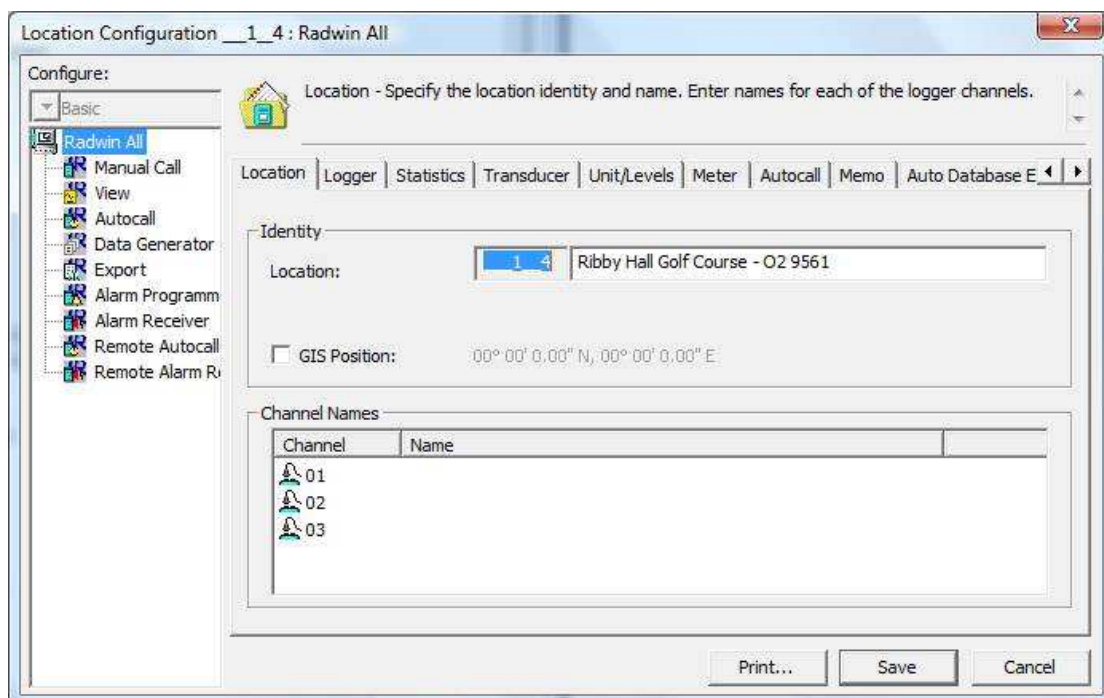
(Issue 2)

## How to permanently change or correct logger configuration details in the Radwin Database

Open Radwin View, Open the Data File, select the logger you want to change and right click on the logger, then select 'Location Database', then 'Edit location' -



You should see this for the logger -





Ref: FAQ0265

Version: 1.0

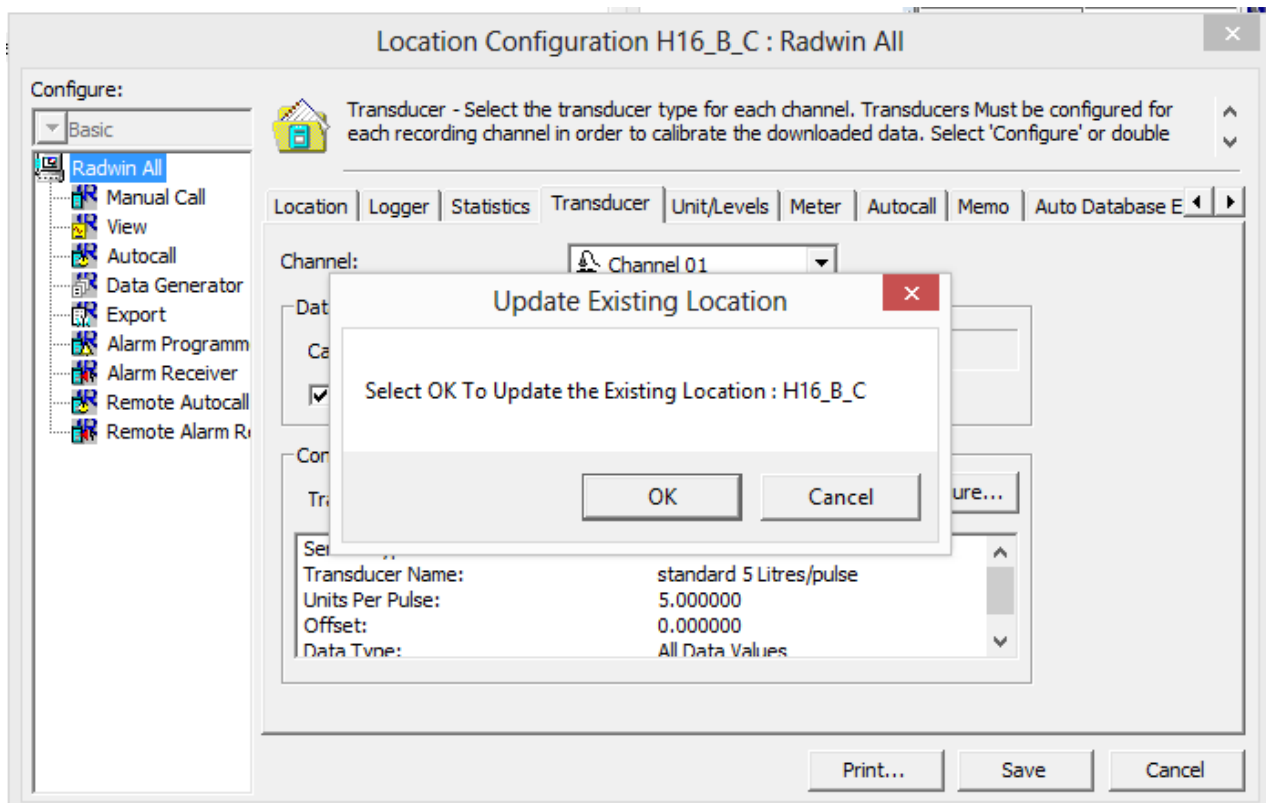
Title-Radwin Database-change logger config

Made By: AB 21/09/15

(Issue 2)

Then select the tab for the configuration you want to change and make changes to the settings as required. Note once changes are made the incoming data downloaded from the logger and stored in the database will be to these settings permanently.

When the changes are completed select 'Save' and then Select 'OK' to save the changes to the location database



Note – if using Datagate and HWM Online then only the Radwin Data is altered – the logger Calibration will be different and Datagate/HWM Online data will not be changed.

#### Document History:

Edition	Date of Issue	Modification	Notes
1st	02/01/13	Release	
2nd	17/09/15	Format update	