



Ref: FAQ0266

Version: 1.0

Title-Radwin Database -add new loggers

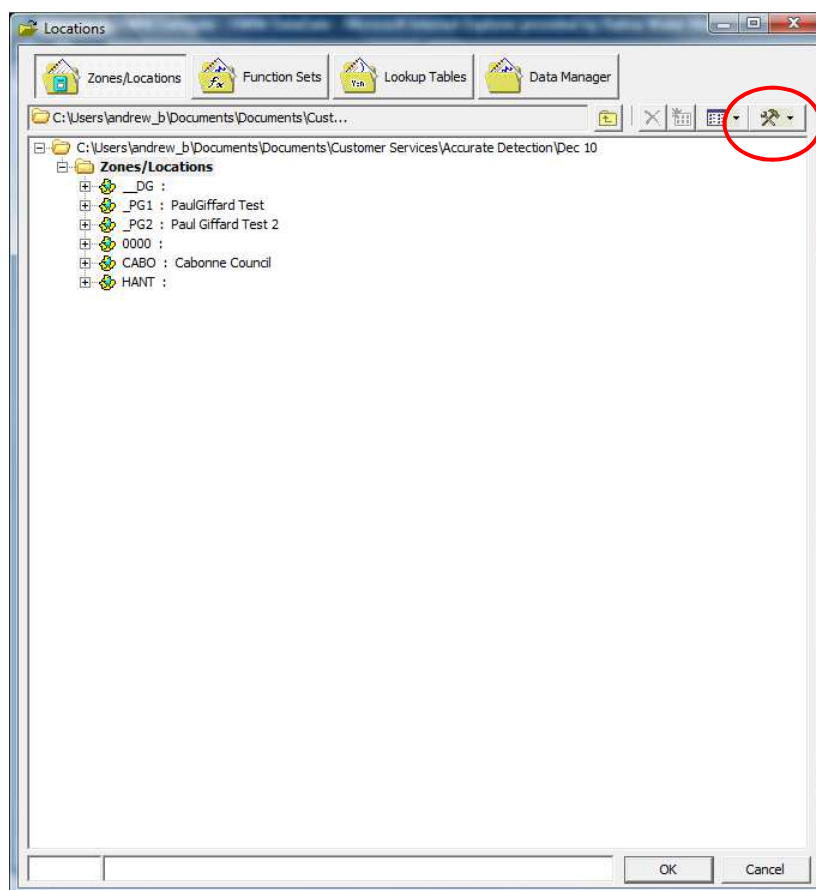
Made By: AB 21/09/15

(Issue 2)

How to add new loggers to your Radcom Database

How to set up the loggers in your Database if they are not already there.

In Set up > Options > Item configuration you should now see your logger database as below.

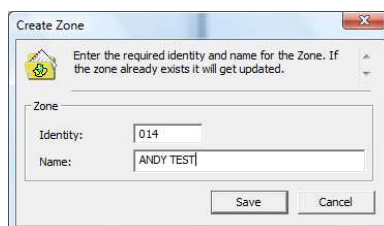


If your logger details are not here then you need to enter your logger details as follows.

You may need to add a new Zone (or you can add your logger to an existing Zone.)

To enter a new zone – Click on the ‘Hammer & Spanner’ icon (see screen shot above)

Then select ‘Create New Zone’ to reveal this screen shot





Ref: FAQ0266

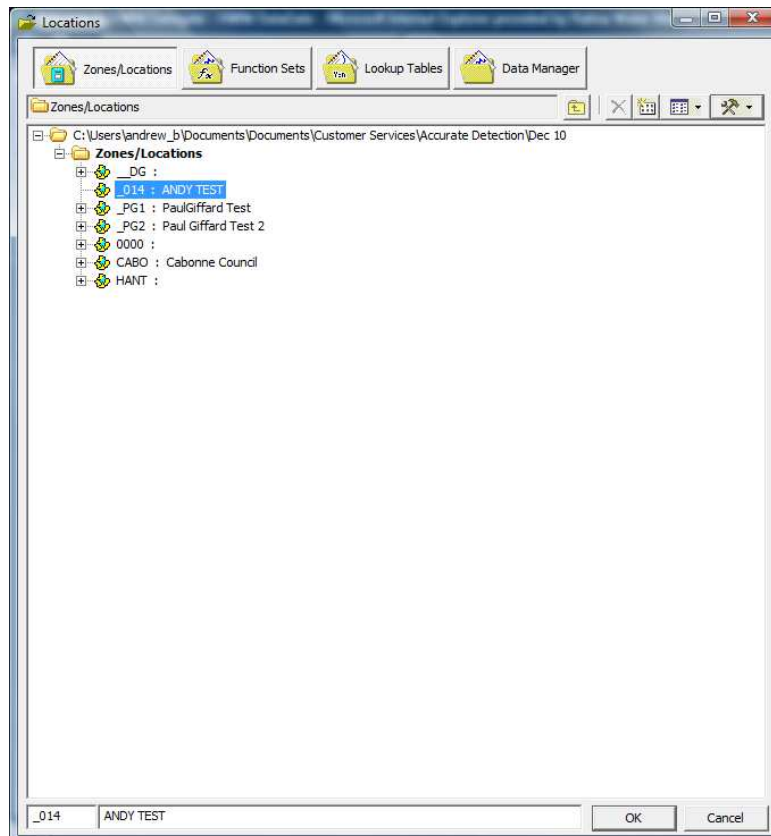
Version: 1.0

Title-Radwin Database -add new loggers

Made By: AB 21/09/15

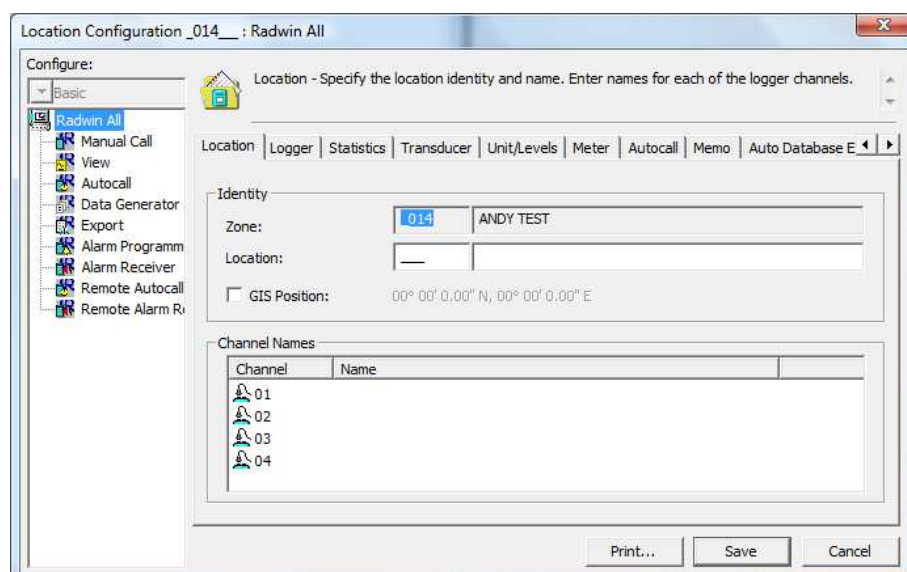
(Issue 2)

Enter your Zone I/D and Name and then 'Save'.
You should now see the new Zone in the list as below.



Highlight the new Zone and select the 'Hammer and Spanner' Icon again

This time select 'Create New Location' - You should now see this screen (below)





Ref: FAQ0266

Version: 1.0

Title-Radwin Database -add new loggers

Made By: AB 21/09/15

(Issue 2)

First enter your location description (numerical and alphanumeric descriptions)

Then select the logger tab.

Location Configuration _014_ : Radwin All

Configure:

Basic

Radwin All

Manual Call

View

Autocall

Data Generator

Export

Alarm Programm

Alarm Receiver

Remote Autocall

Remote Alarm R

Logger - Select the logger type and baud rate. Select the connection type (how the computer will communicate with the logger), and enter telephone numbers if required. The logger manufacture

Location | **Logger** | Statistics | Transducer | Unit/Levels | Meter | Autocall | Memo | Auto Database E

Logger

Type: Wessex Controllercom Baud: 9600

Date Manufactured: 11/01/1970 Serial:

Last Battery Change: 11/01/1970 Last Known Logger Configuration

Connection

Connection Type: SMS Modem

GSM Data Number:

SMS Voice Number:

Print... Save Cancel

Fill in the logger details as accurately as possible.

In this example Logger type is Wessex Controllercom selected from the drop down

Baud is automatically filled from the logger type selected above

Serial number is on the logger label

Connection type – select (in this case) SMS Modem from the drop down

SMS Voice number – be sure to enter the correct logger phone number in international format (+44 drop the zero) DOUBLE CHECK THIS NUMBER IS CORRECT

Then select 'Save'.

Repeat this process for each of your loggers.

Once complete then Start Autocall

This will process all the available data messages relating to your loggers including those you have just added to your Database.



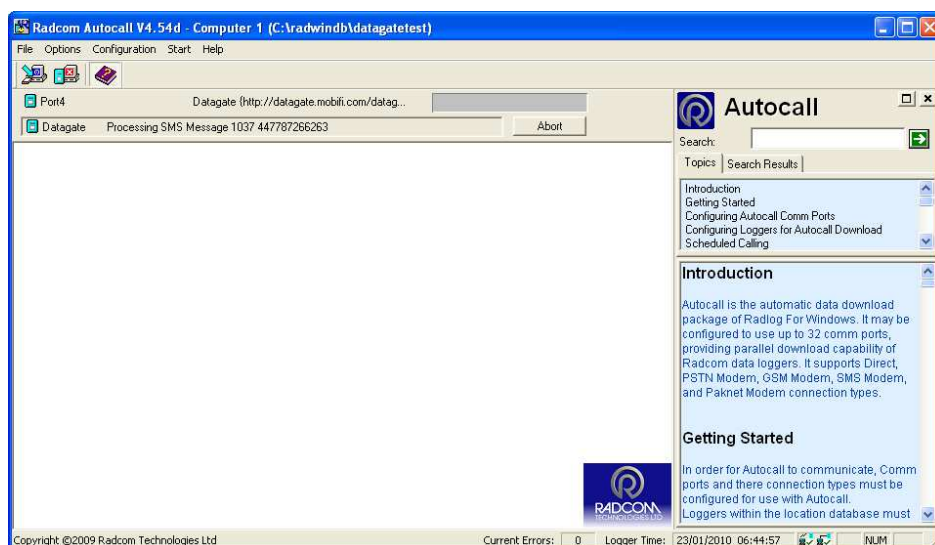
Ref: FAQ0266

Version: 1.0

Title-Radwin Database -add new loggers

Made By: AB 21/09/15

(Issue 2)



Then use Radwin View to select each of your loggers and view the data.

Document History:

Edition	Date of Issue	Modification	Notes
1st	03/01/13	Release	
2nd	17/09/15	Format update	