



Ref: FAQ0270

Version: 1.0

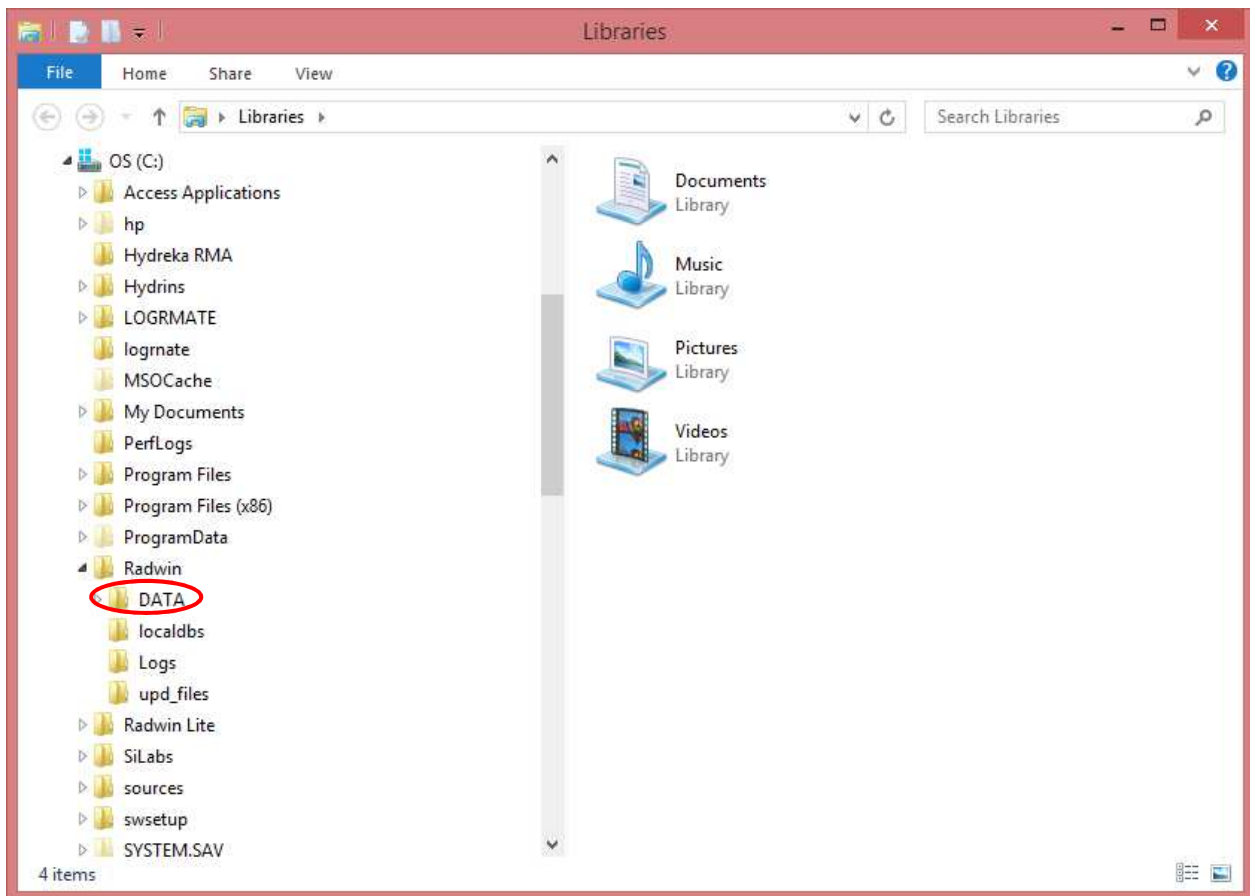
Title – Radwin Database – how to email

Made By: AB 21/09/15

(Issue 2)

How to locate your Radwin database and email it

Use the explore function on your PC to find the Radwin software folder. If you select the arrow to the left of the Radwin software folder it will expand out the Radwin folder – immediately under this is a folder called DATA – this is the Radwin Data folder and contains all the logger information and data.



Take a copy of the complete Data Folder (as ringed above) and save it somewhere safe on your C drive (where you can find it later if for example you need use the copy for back up purposes or you are moving it to another /new PC)

Once you have saved a copy of the Data folder you can 'zip' it and email it if you need to send it to another person as follows:-



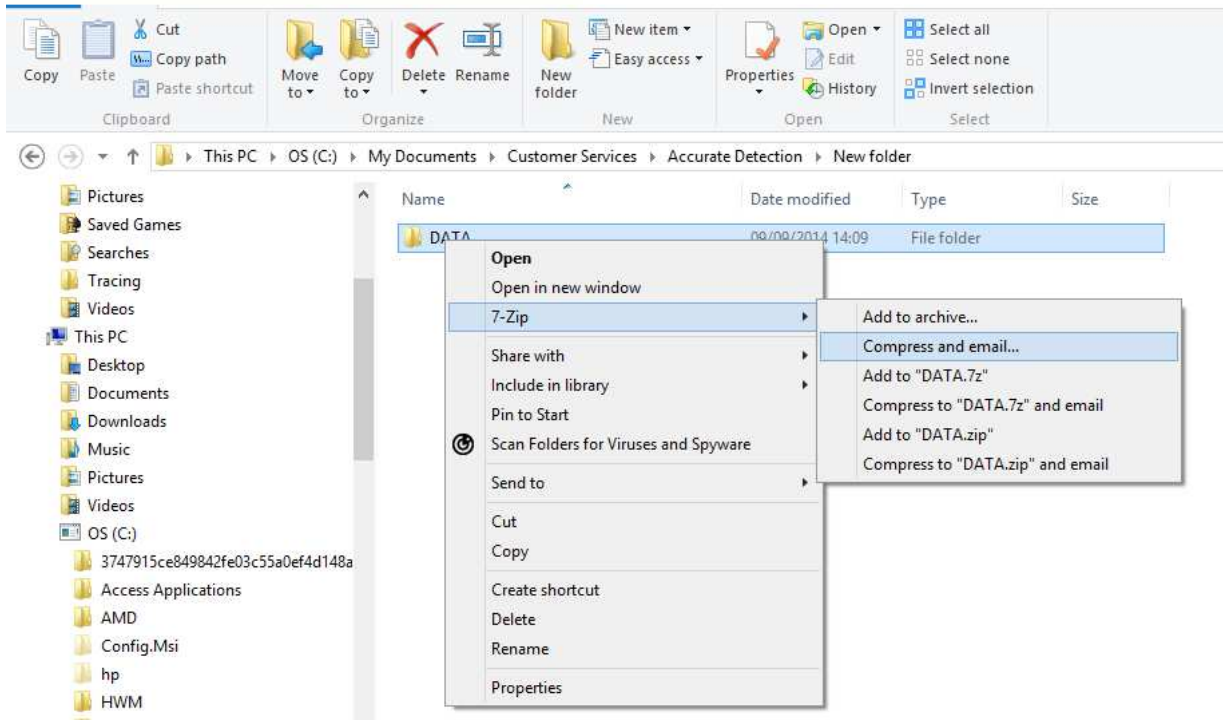
Ref: FAQ0270

Version: 1.0

Title – Radwin Database – how to email

Made By: AB 21/09/15

(Issue 2)



Document History:

Edition	Date of Issue	Modification	Notes
1st	03/01/13	Release	
2nd	21/09/15	Format update	