



Ref: FAQ0272

Version: 1.0

Title-Radwin database – logger lists

Made By: AB 21/09/15

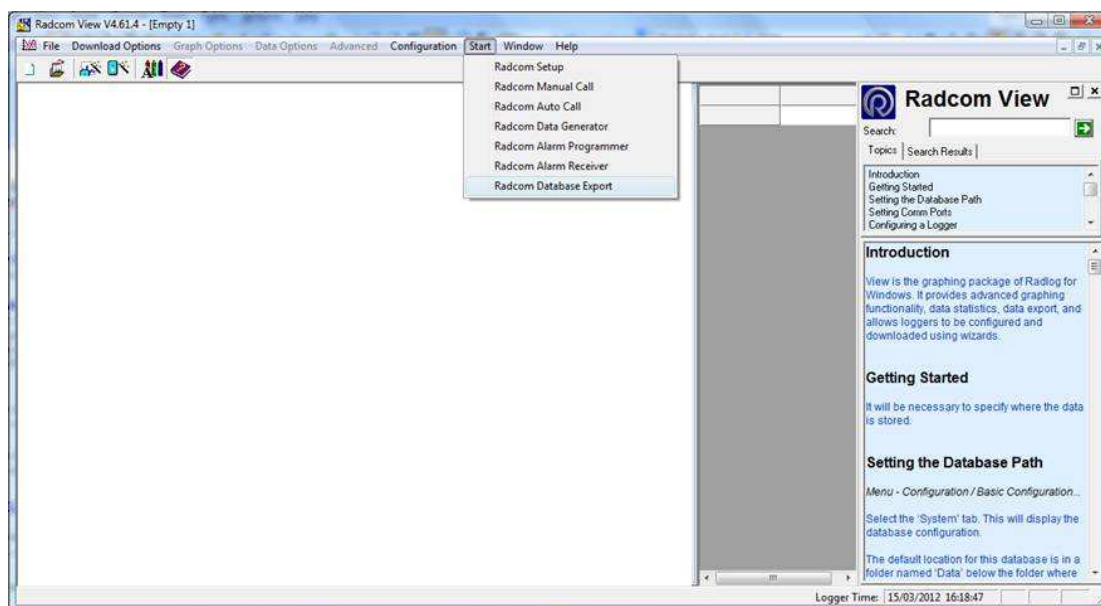
(Issue 2)

Radwin Database - how to extract a list of all loggers GSM Call out times and / or other logger configuration information

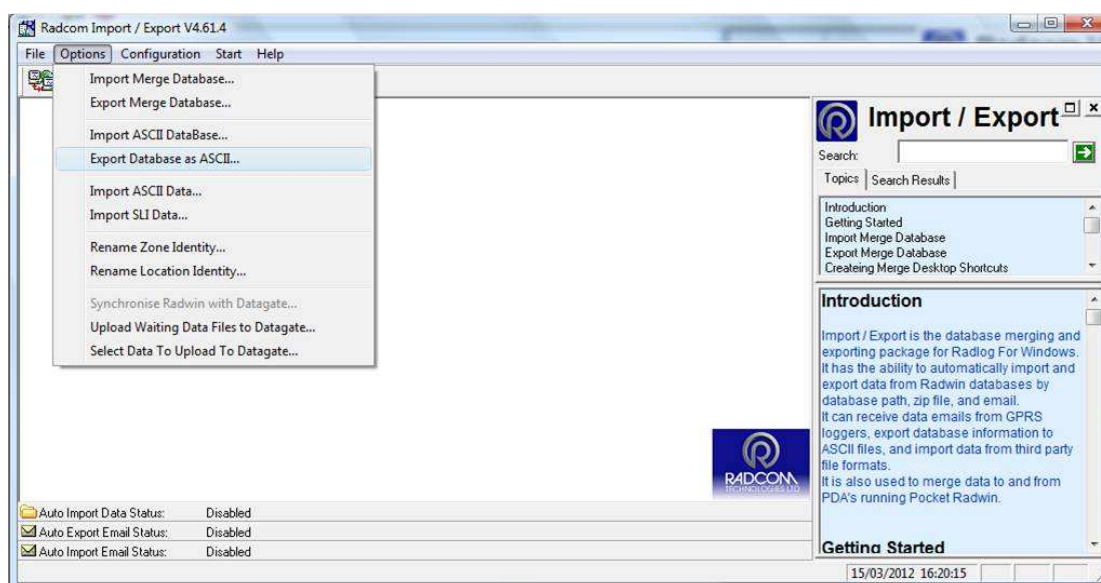
GSM call out times can be generated by Database Export

You can export a list with the GSM call out times.

In Radwin software go to 'Start' and select 'Radcom Database Export'

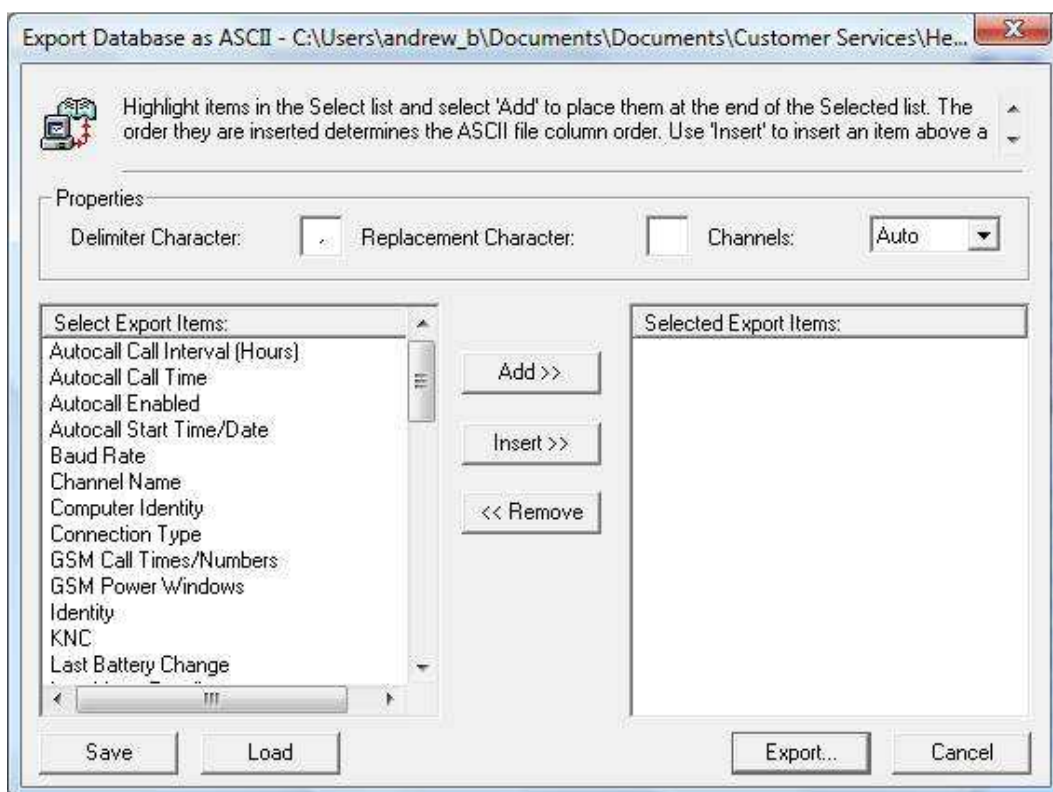


Then 'Options' > 'Export database as ASCII'





Select 'Export all Zones and locations'



Then select what you want from the list e.g zone location, GSM call out time etc

And then 'Export'

Document History:

Edition	Date of Issue	Modification	Notes
1st	03/01/13	Release	
2nd	21/09/15	Format update	