



Radwin V 4.0 Plus

User Notes on Basic Function Sets & Groups



World Leading Specialists in the field of Water Management Systems

UK OFFICE

RADCOM (Technologies) Ltd
Sentry House, 10 Romsey Industrial Park
Greatbridge Road, Romsey, Hampshire,
SO51 0HR, ENGLAND

Tel: +44 (0)1794 52 8700 Fax: +44 (0)1794 52 8760
Email: sales@radcom.co.uk
Email: help@radcom.co.uk
Internet: <http://www.radcom.co.uk>

This User Note covers: -

- **Database**
- **System Configuration**



Radwin V 4.0 Plus

User Notes on Basic

Function Sets & Groups

AMENDMENT RECORD

Doc Issue	Date of issue	Reason for change	Amended by
A		Draft Issue	MM

CONTENTS

Introduction	Page3
Groups	Page4
Function	Page5
Single channel graph	Page6
Multi-channel graph	Page7



Radwin V 4.0 Plus

User Notes on Basic Function Sets & Groups

Introduction

Function sets are created to view select period of data and specific channels it may also be used to combine data, export data, and create graphs. Locations are included by selecting the 'Location' button and selecting a location and correct channel.

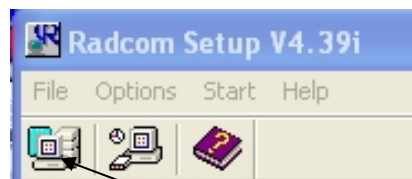
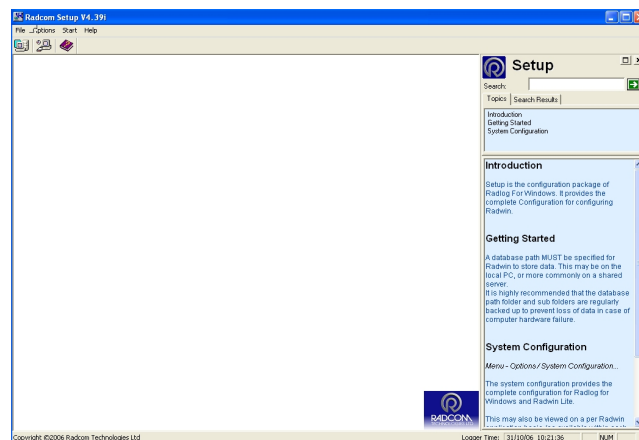
Likewise, existing function sets and constant values can also be included. If the functions sets are included within this function sets,

Expand Fn Elements -may be used to view the function set in the way it will processed.

Function Output - A specific Sensor type and unit may be specified for the function output, or default will use the sensor type of the data for first location element. A lookup table may also be applied to the output. Select Advanced to apply a daily time window to the data, and/or to specify a sample rate for the data.

Auto Generate Data - The Data Generator can export data from function sets in various formats. Select the required format(s) by double clicking the item in the list. Select the time period of data that should be exported.

Statistics - Specify what statistics should be used with the function set. They can be calculated from the function set elements, or values can be entered.

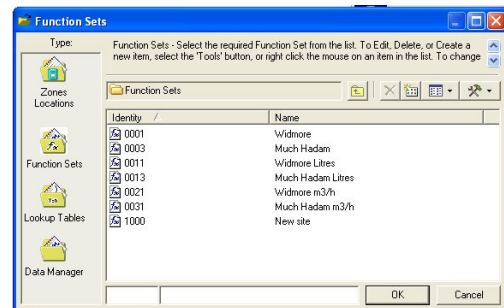
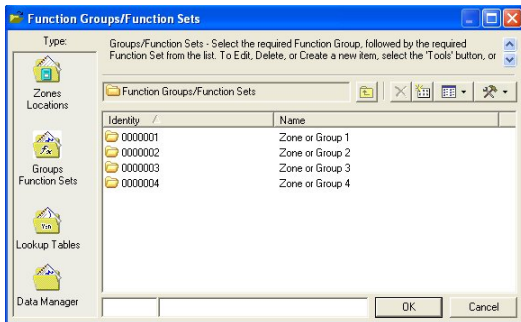


Select



Radwin V 4.0 Plus

User Notes on Basic Function Sets & Groups

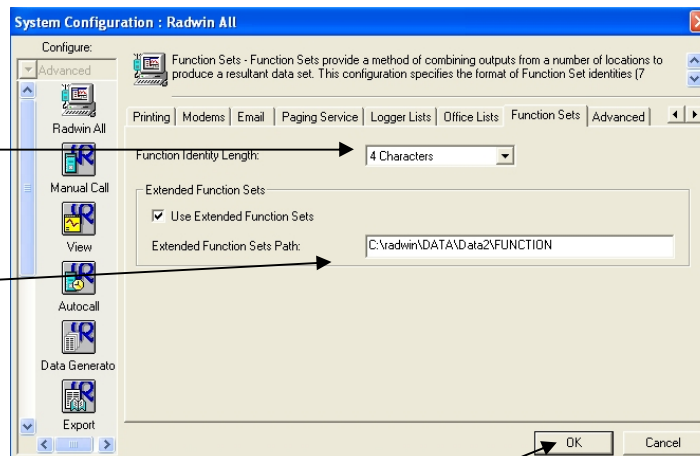


In the system of Radlog For Windows you can either have Groups with Function Sets or a Function list,
If you are using Groups go back to Set up, System Configuration Function Sets and set these parameters

Function Sets

Select if function set are to 4 or 7 characters in length

Enable and select path for extended function sets

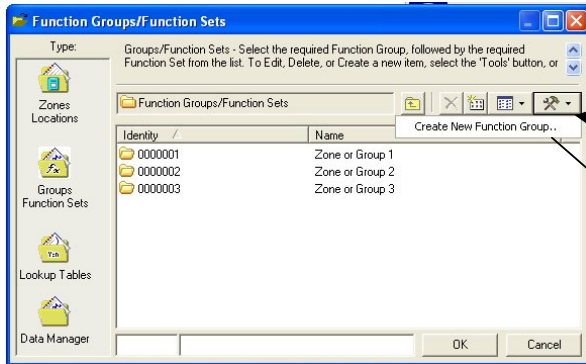


If you are using Function Sets go to next Page ➡

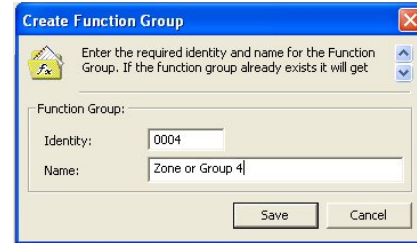


Radwin V 4.0 Plus

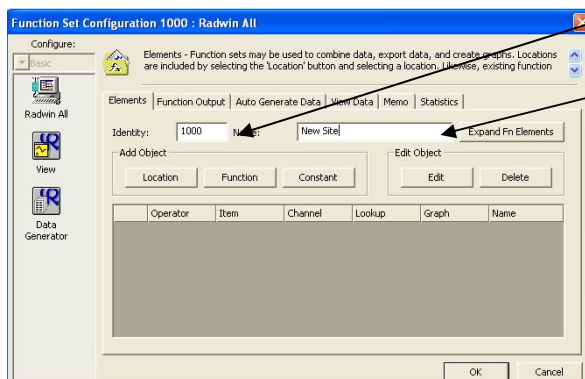
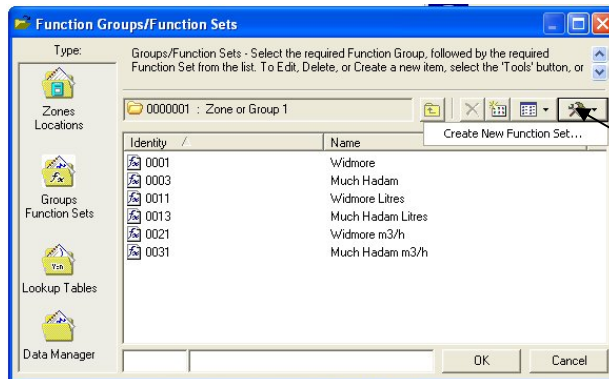
User Notes on Basic Function Sets & Groups



Enter required Number
and Name
Save



Double click on the Zone/group on enter new function #

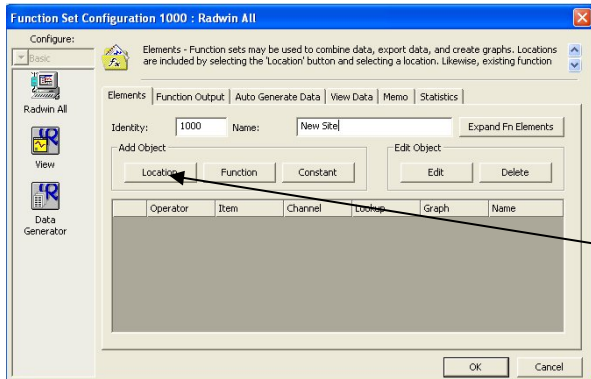


Enter required Number
and Name

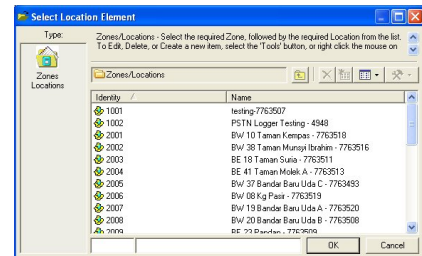


Radwin V 4.0 Plus User Notes on Basic Function Sets & Groups

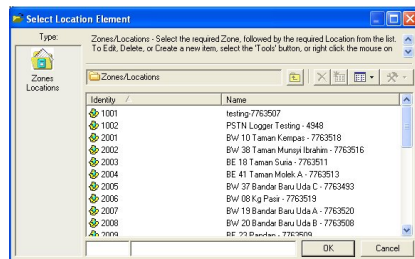
For a single channel graph Displayed on graph



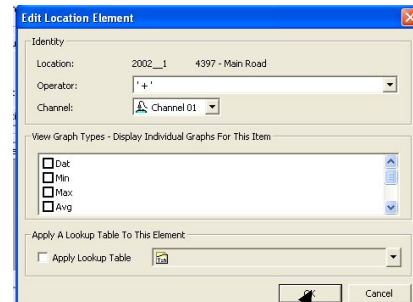
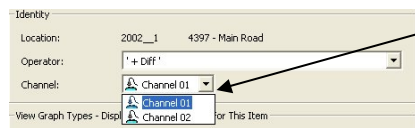
Select Location



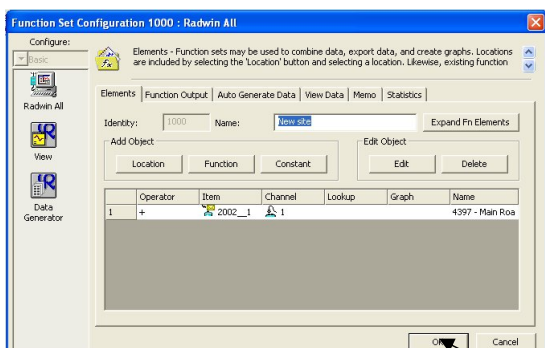
Select Zone Double click



Select Location Double click



Select Channel then OK

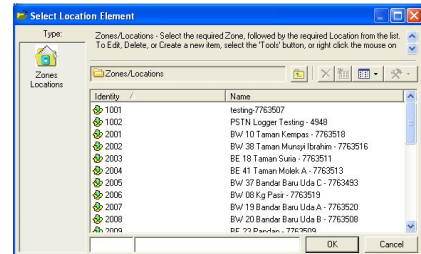
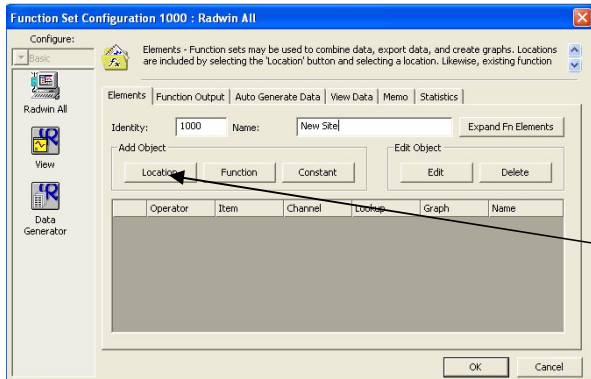




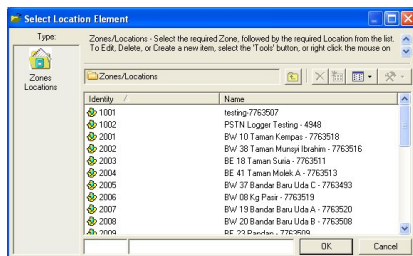
Radwin V 4.0 Plus

User Notes on Basic Function Sets & Groups

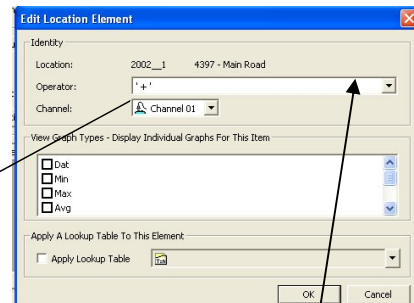
For a Two or more channels Displayed on graph selected Location



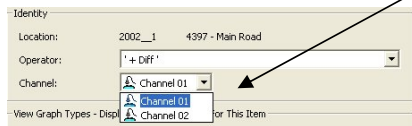
Select Zone Double click



Select Location Double click



Select Channel then Graph Fn





Radwin V 4.0 Plus

User Notes on Basic Function Sets & Groups

Edit Location Element

Identity

Location: 2002__1 4397 - Main Road

Operator: Graph Fn

Channel: Channel 01

View Graph Types - Display Individual Graphs For This Item

☒ Dat
☐ Min
☐ Max
☐ Avg

☐ Tmn
☐ Tmx
☐ Tot
☐ Sum

OK Cancel

Select Dat (All data)