



Ref: FAQ0331

Version: 1.0

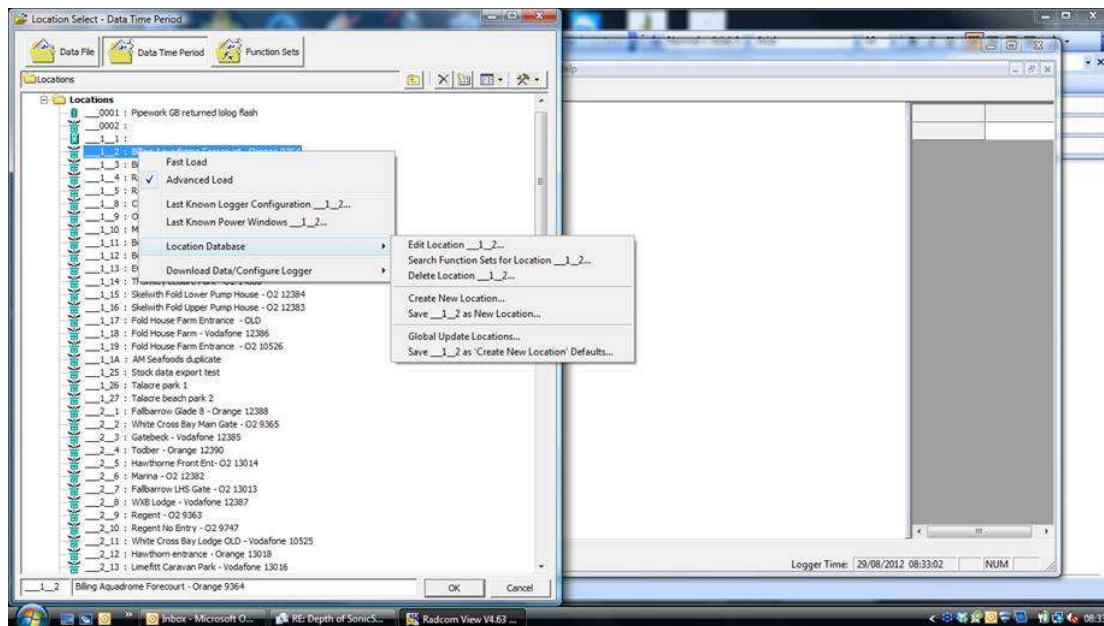
Title –Radwin Database –logger config

Made By: AB 23/09/15

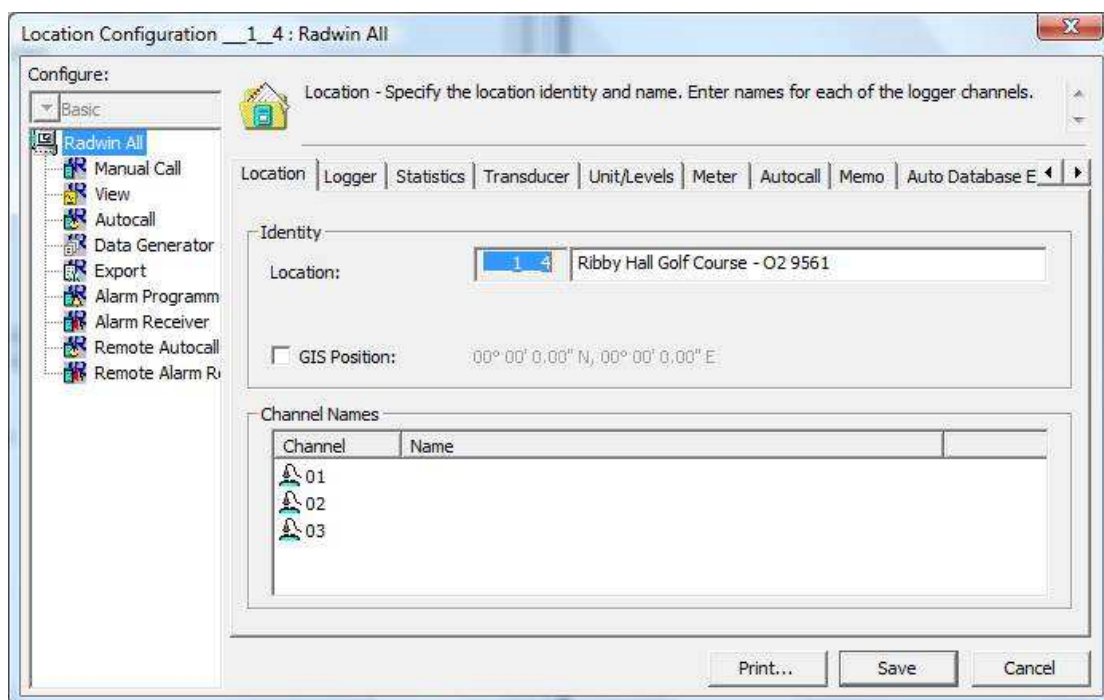
(Issue 2)

## How to change the logger configuration in the Radwin Database to avoid the need to reconfigure the logger on site

Open Radwin View, Open the Data File, select the logger you want to change and right click on the logger, then select 'Location Database', then 'Edit location' -



You should see this for the logger -





Ref: FAQ0331

Version: 1.0

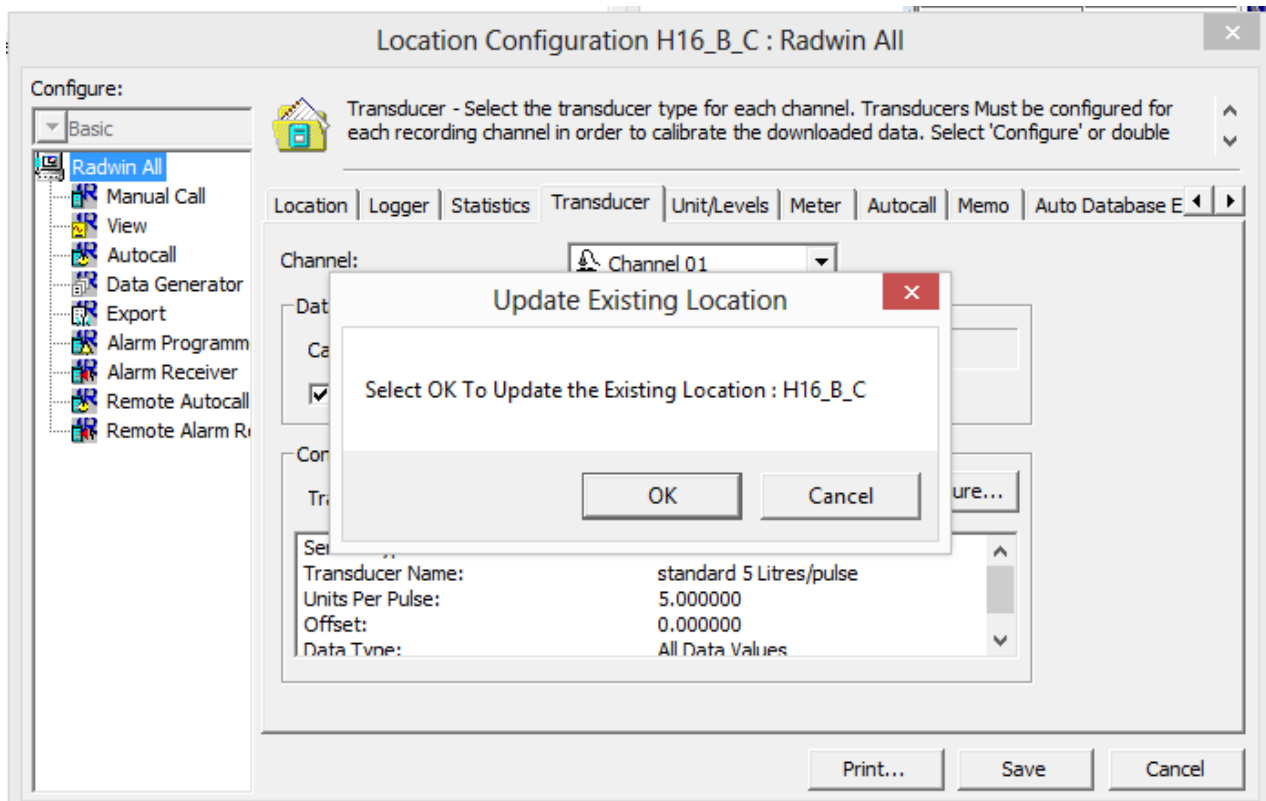
Title –Radwin Database –logger config

Made By: AB 23/09/15

(Issue 2)

Then select the tab for the configuration you want to change and make changes to the settings as required. Note once changes are made the incoming data downloaded from the logger and stored in the database will be to these settings permanently.

When the changes are completed select 'Save' and then Select 'OK' to save the changes to the location database



Note – if using Datagate and HWM Online then only the Radwin Data is altered – the logger Calibration will be different and Datagate/HWM Online data will not be changed.

### Document History:

Edition	Date of Issue	Modification	Notes
1st	10/07/13	Release	
2nd	23/09/15	Format update	