



Ref: FAQ0332

Version: 1.0

Title –Radwin Database – old format

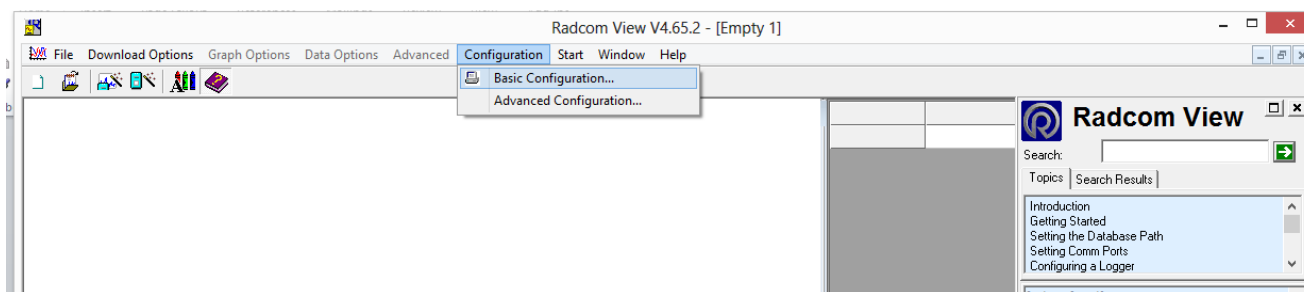
Made By: AB 23/09/15

(Issue 2)

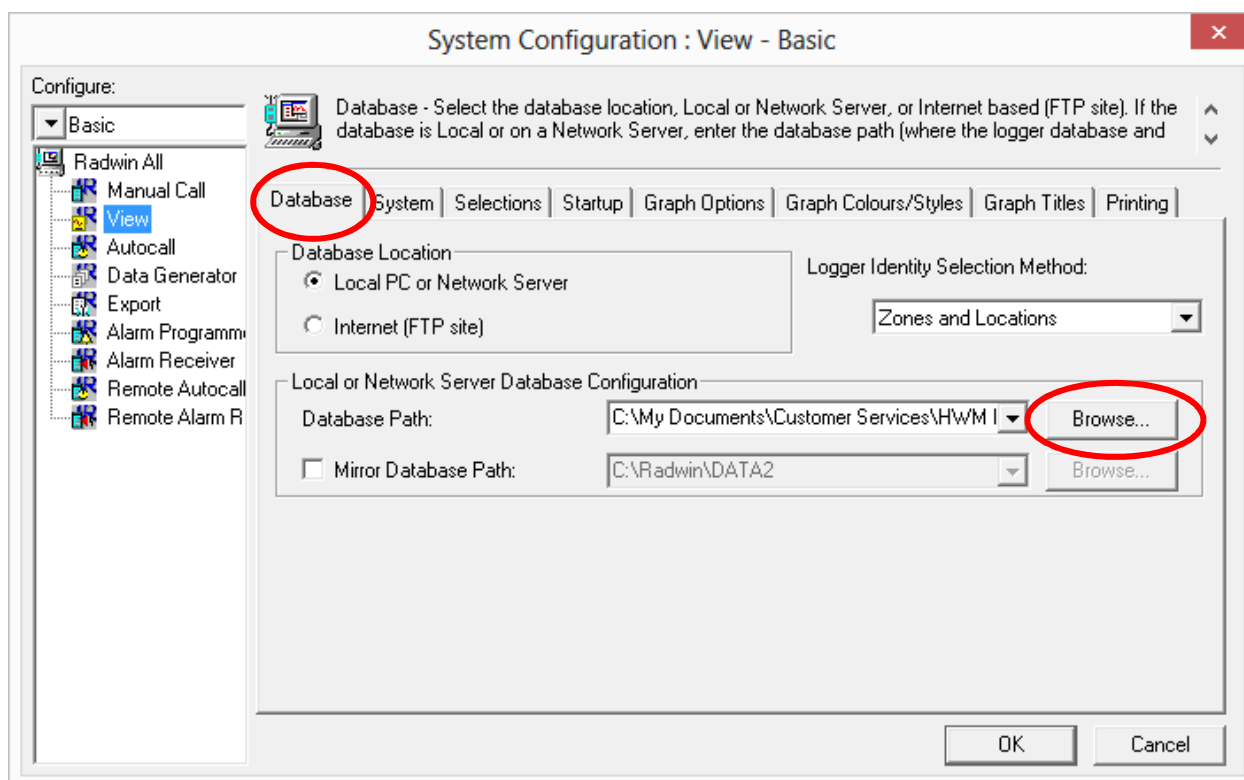
How to update an old Radwin Database format to make it compatible with current Radwin versions

With an old version of Radwin Database you may get an error message warning you that the Database is old and can only be used for Read Only – new logger configurations cannot be written to it. If this is the case it is possible to upgrade old Radwin Databases by following this procedure -

The update can be performed using the latest version of Radwin software – firstly ensure the database path is set in Radwin for the 'old' database by going to Radwin View > Configuration > Basic Configuration -



Select the Database tab and the Browse button –





Ref: FAQ0332

Version: 1.0

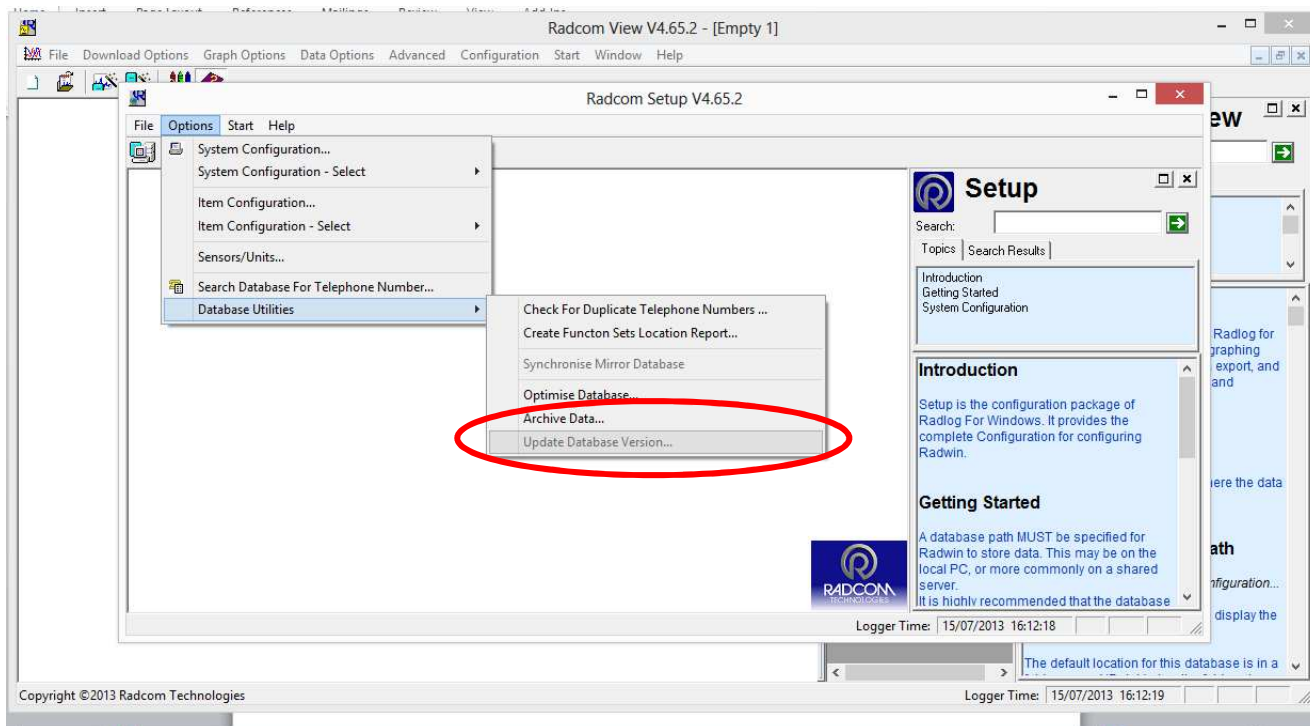
Title –Radwin Database – old format

Made By: AB 23/09/15

(Issue 2)

From the Browse button locate your old Radwin Data folder (see supplementary guide if you have trouble doing this) and Select and open the database so it appears as the Database path above.

Then– go to Radwin ‘Setup’, ‘Options’ menu, ‘Database Utilities’, and ‘Update Database Version...’.



NOTE - If multiple users are looking at this database, all copies of Radwin will need to be updated as they will not be able to view the database after it has been updated.

Document History:

Edition	Date of Issue	Modification	Notes
1st	15/07/13	Release	
2nd	23/09/15	Format update	