



## **Radwin Start an SMS Logger Recording**



Keep this record in the front of the User Manual. When the document has been amended write the amendment number, the date, the paragraph numbers affected by the amendment and your initials in the table below.

	Start an SMS Logger Recording ©Radcom (Technologies) Ltd	Page 2 of 21
--	---	--------------

### Contents

Introduction	4
Using Radwin Wizards	5
Setting Up a Database	6
Wizard Icons	8
Using Configure Logger Wizard	9
Downloading Parameter Settings	9
Set a Zone and Location	11
Future communication method	14
Channel Configuration	15
Flow Channel Configuration	16
Recording Start / Stop time	17
GSM Callout Numbers	18
GSM Callout Times	19
Upload Logger	20
Start Other Radwin Programs	21



# Radwin User Guide

## Start an SMS Logger Recording

### Introduction

This guide will help you configure a Radcom SMS data logger so that it records in the way you need it to.

Recording parameters can be uploaded with Radwin Lite, Radwin Manual Call or Radwin View.

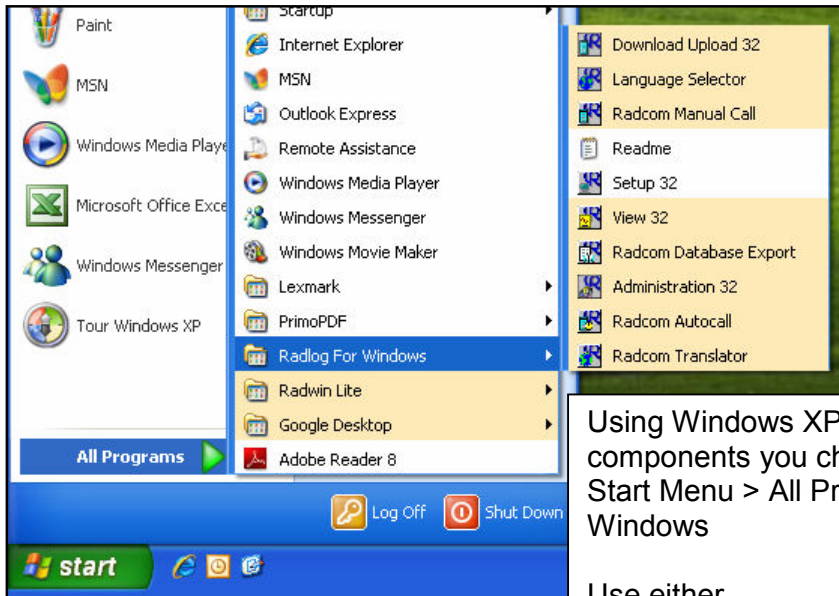
All three applications have easy to use Wizards which guide you step by step through the configuration process.

To configure the logger without using a Wizard use Manual Call Advanced Download Upload Utilities.

# Radwin User Guide

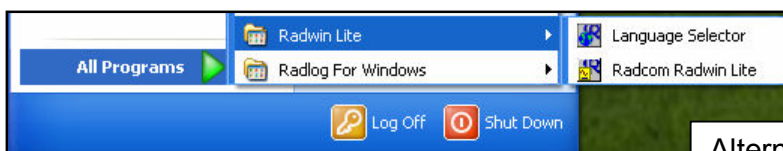
## Start an SMS Logger Recording

### Using Radwin Wizards



Using Windows XP you will find the Radwin components you chose to install on the Start Menu > All Programs > Radlog for Windows

Use either  
Radcom Manual Call  
or  
View32



Alternatively use Radwin Lite which is also on the Start Menu



A window similar to this will appear on the screen.

Wait a couple of seconds and it will disappear, or click Cancel to remove it from the screen more quickly.

Continued...

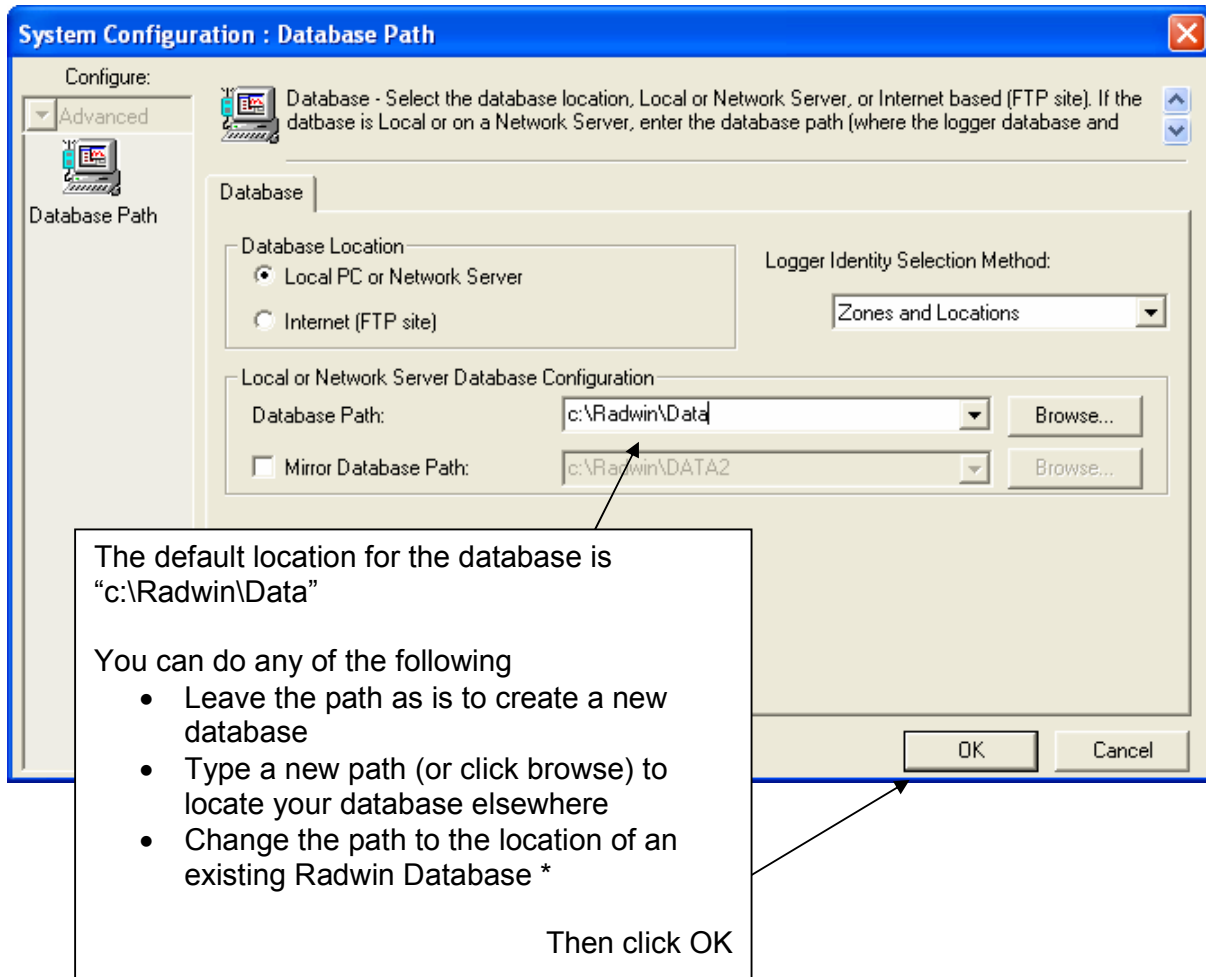
# Radwin User Guide

## Start an SMS Logger Recording

### Setting Up a Database

If a database has been setup for Radwin then the application will be ready to use, and none of the steps below will be required.

If you have not run Radwin on this PC before, or if the database has moved you will see this screen.



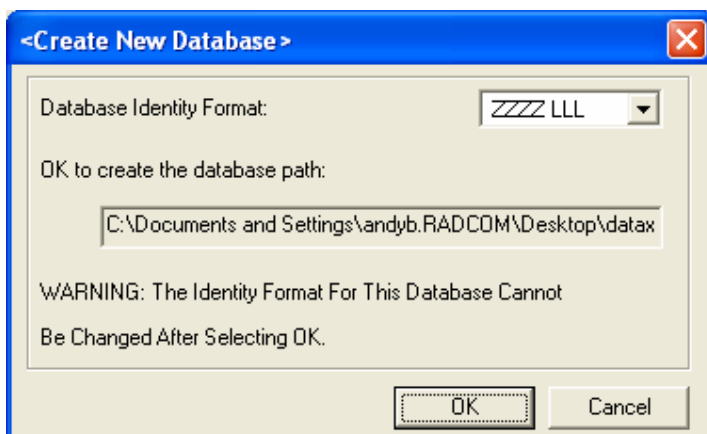
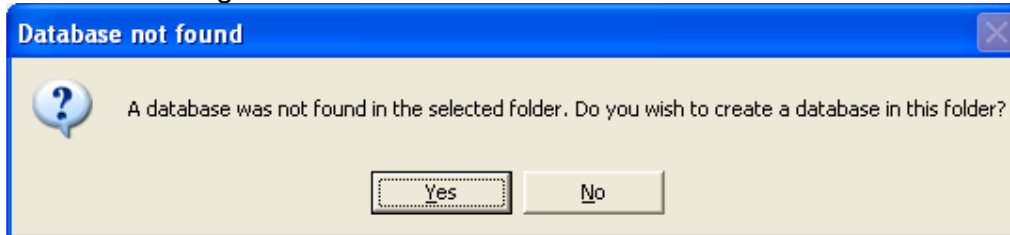
\*If you change the path to an existing database then the system configuration screen will close (after you click ok) and the application will be ready to use.

Continued...

## Radwin User Guide

### Start an SMS Logger Recording

If you choose to change the path to a new location (without any Radwin database files) then this message will confirm that a new database will be created.



The default database identity format is fine in the majority of cases.

**If you change it, then it can not be changed afterwards.**

Radcom recommends keeping the default format (ZZZZ LLL) unless you have been advised that you will need a different format.

Click OK

After clicking OK the database files will be created and application will be ready to use.

# Radwin User Guide

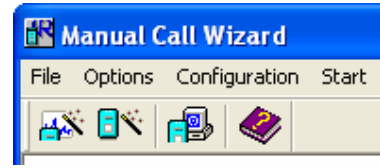
## Start an SMS Logger Recording

### Wizard Icons

Radcom View

Radwin Lite

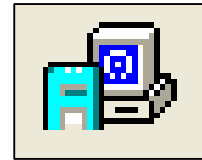
Manual Call Wizard



All three applications share the same wizard icons.  
On the left – Download Data Wizard  
On the right – Configure Logger Wizard



Manual Call also has an icon for  
Advanced Download / Upload /  
Utilities





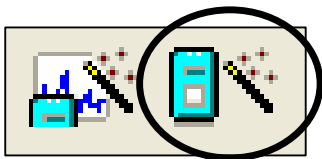
# Radwin User Guide

## Start an SMS Logger Recording

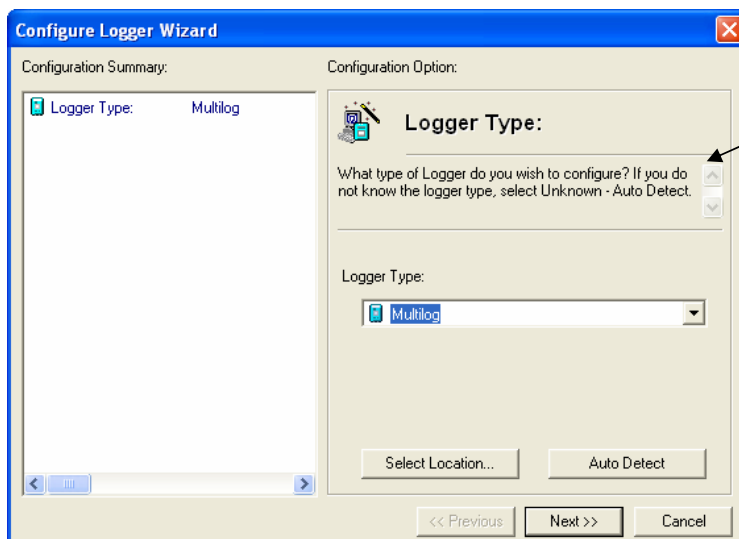
### Using Configure Logger Wizard

#### Downloading Parameter Settings

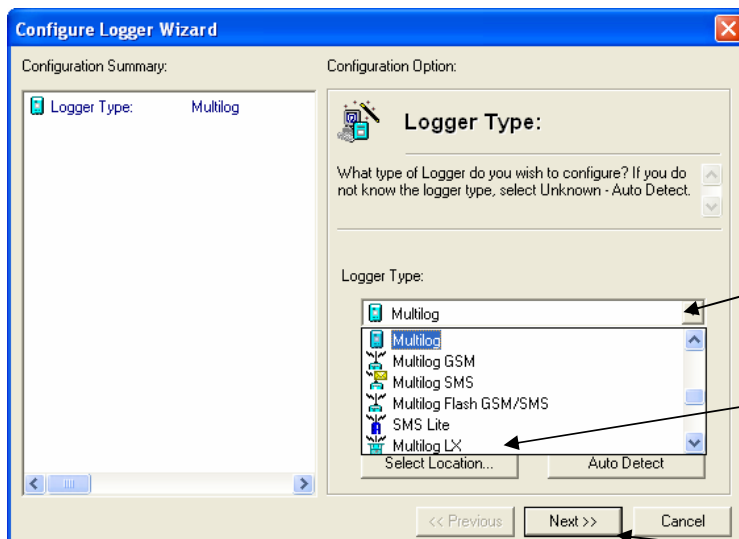
Connect the logger to the computer using the appropriate communication cable.



Click the Configure Logger Wizard icon



All the way through the configuration process there are instructions to help you here...

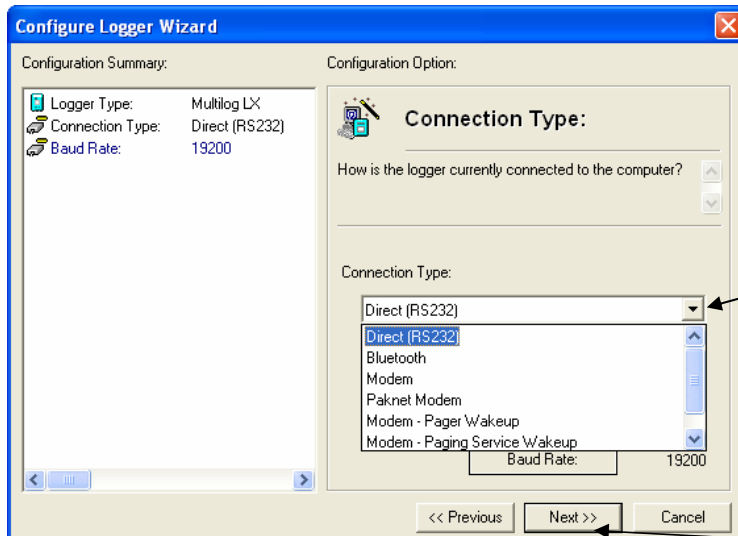


Use the dropdown menu to select the logger you have connected (eg SMS Lite).

Click Next

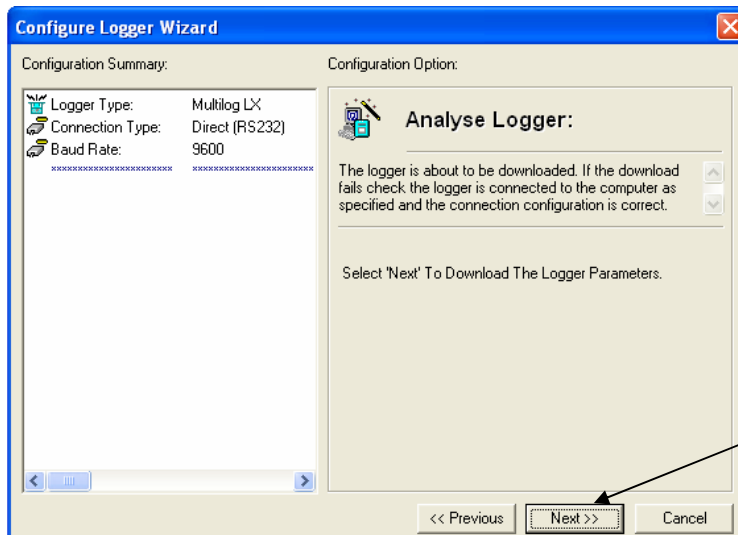
# Radwin User Guide

## Start an SMS Logger Recording

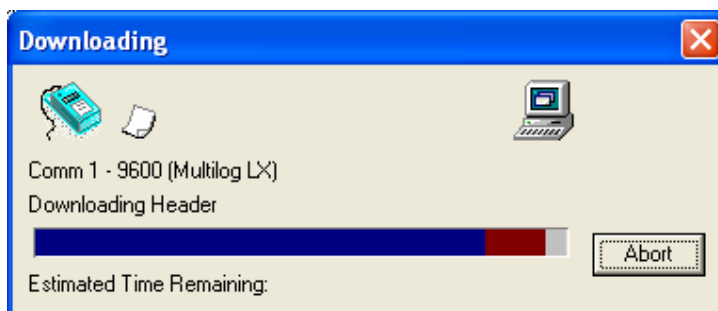


Use the dropdown menu to select the connection type (Direct RS232).

Click Next



Click Next to download the current logger parameters

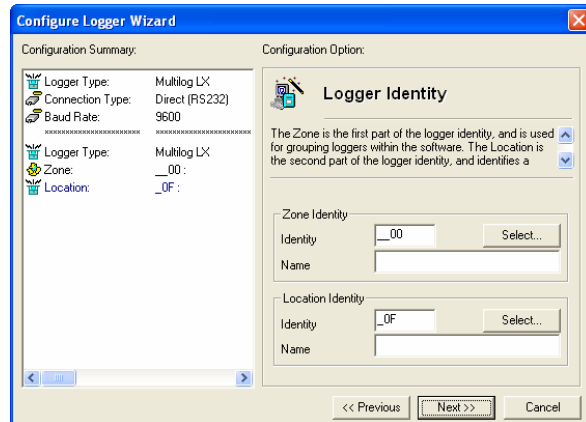


# Radwin User Guide

## Start an SMS Logger Recording

The current recording parameters have now been downloaded from the logger.

As you step through the wizard, information about the settings in the logger will build up on the left.



### Set a Zone and Location

Zone:

Identity:

Name:

Location:

Identity:

Name:

The Zone is the first part of the logger identity, and is used for grouping loggers within the software.

The Location is the second part of the logger identity, and identifies a logger within a Zone.

To create a new location, enter zone and location identity numbers directly into the boxes above, along with names, and the information will be used to create a new item in your Radwin database.

To use an existing Zone and Location from within your database see the next page...

# Radwin User Guide

## Start an SMS Logger Recording

Zone:

Identity:

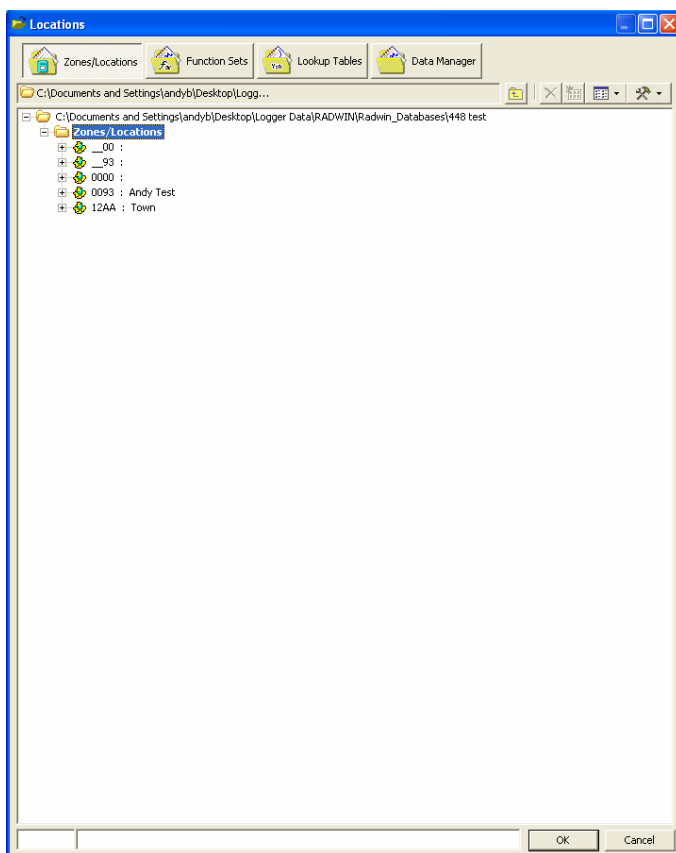
Name:

Location:

Identity:

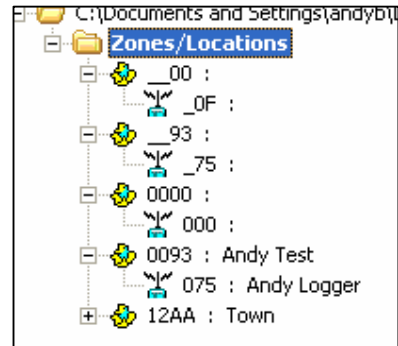
Name:

If you already have a database and you wish to use the information held within it to identify the logger click Select next to Location Identity



A list of Zones from your database will be displayed.

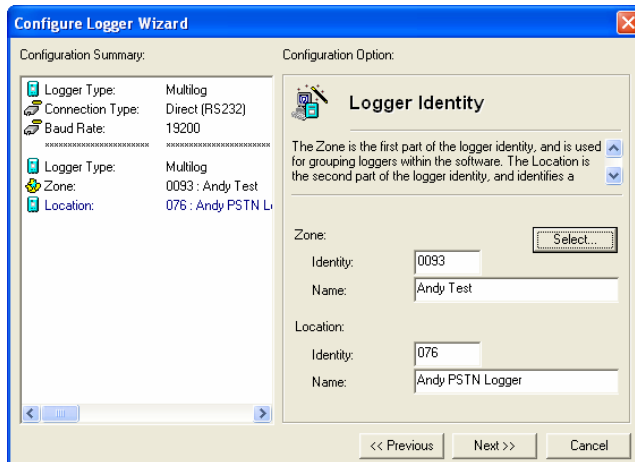
Double click a Zone or click the plus icon next to it to see the locations within.



Double click on the location you wish to use.

# Radwin User Guide

## Start an SMS Logger Recording



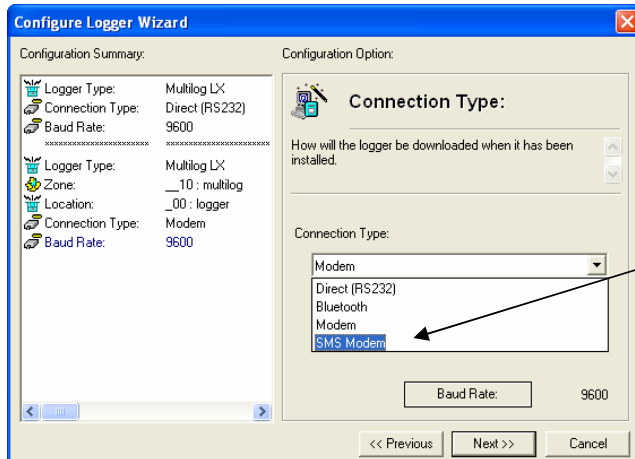
The Zone and Location information has now changed within the boxes on the right, and the information on the far left reflects this.

Click Next to continue.

# Radwin User Guide

## Start an SMS Logger Recording

### Future communication method



**Configure Logger Wizard**

Configuration Summary:

- Logger Type: Multilog LX
- Connection Type: Direct (RS232)
- Baud Rate: 9600

---

Configuration Option:

**Connection Type:**

How will the logger be downloaded when it has been installed.

Connection Type:

- Modem
- Direct (RS232)
- Bluetooth
- Modem
- SMS Modem**

Baud Rate: 9600

<< Previous Next >> Cancel

Now select from the drop down menu the method by which the logger will communicate after installation.

SMS Loggers use SMS modem.

Click next to continue.



**Configure Logger Wizard**

Configuration Summary:

- Logger Type: Multilog LX
- Connection Type: Direct (RS232)
- Baud Rate: 9600

---

Configuration Option:

**Telephone Number:**

Enter the full telephone number (including international dialling code) of the logger, this is normally displayed on the front of the logger.

Telephone Number: +447787787787

<< Previous Next >> Cancel

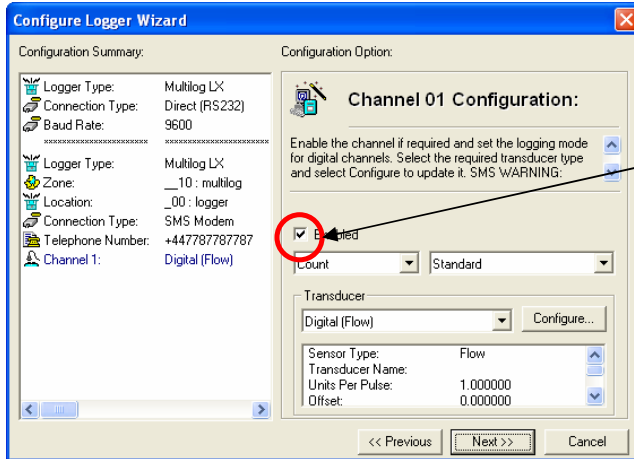
Enter the full telephone number (including international dialling code) of the logger. This is normally displayed on the front sticker of the logger when the SIM card has been fitted by Radcom.

Click next to continue.

# Radwin User Guide

## Start an SMS Logger Recording

### Channel Configuration

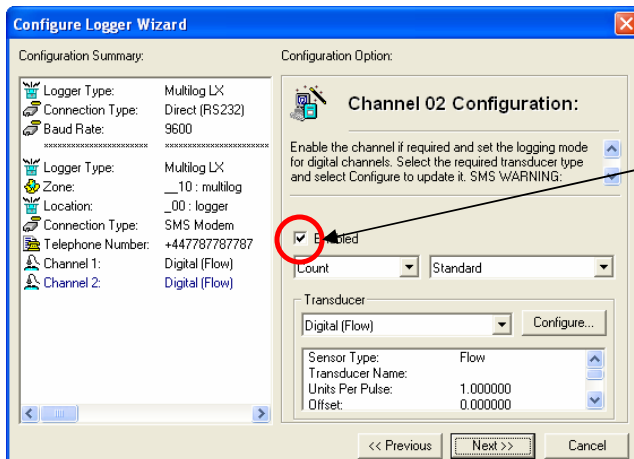


Starting with Channel 1, each channel is configured individually.

Make sure the Enabled tick box is ticked to turn the channel on.

Configure the flow channel or click next to continue.

Flow Channel Configuration is described on the next page of this manual.



If your logger is dual channel you will have need to configure the second channel.

Make sure the Enabled tick box is ticked to turn the channel on if required.

Configure the flow channel or click next to continue.

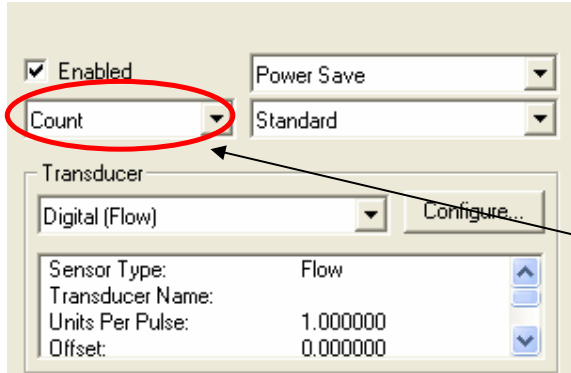
Flow Channel Configuration is described on the next page of this manual.

Flow Channel Configuration next...

# Radwin User Guide

## Start an SMS Logger Recording

### Flow Channel Configuration



☒ Enabled  
 Count (circled in red)  
 Power Save  
 Standard  
 Transducer  
 Digital (Flow)  
 Configure...  
 Sensor Type: Flow  
 Transducer Name:  
 Units Per Pulse: 1.000000  
 Offset: 0.000000

Choose between...

**Count logging** (counting pulses)

or

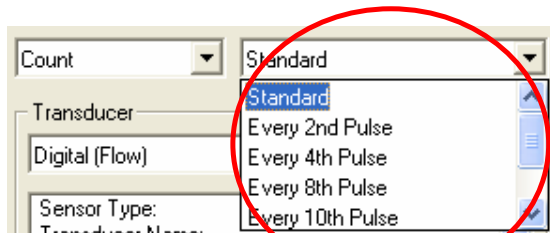
**Event logging** (counting the time between each pulse)



Count  
Count  
Event

**The default logging mode is Count – Standard.**

Use Event Logging for very low pulse count.



Count  
Standard (circled in red)  
Standard  
Every 2nd Pulse  
Every 4th Pulse  
Every 8th Pulse  
Every 10th Pulse

As standard the logger will count (or time between) each pulse. However if you receive a very high number of pulses (more than 36 per second) you will overwhelm the logger causing it to miscount. In this case change from Standard (counting every pulse) to every 2<sup>nd</sup>, 4<sup>th</sup>, 8<sup>th</sup> or something even higher if required

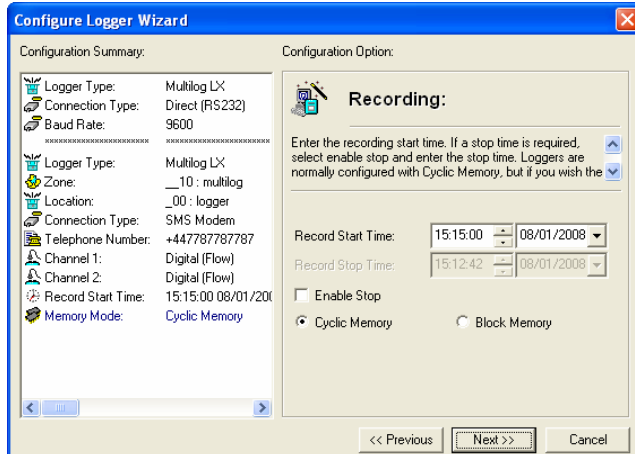
36 pulses per second is equivalent to an HRP (100 pulses per revolution) doing a complete revolution in just under 3 seconds.



# Radwin User Guide

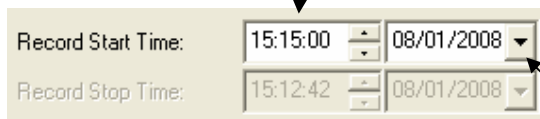
## Start an SMS Logger Recording

### Recording Start / Stop time

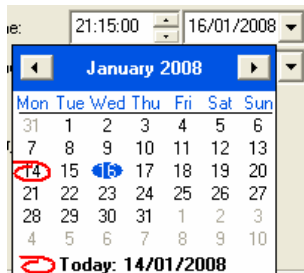


Loggers can be set to start recording at a particular time and date.

If the time and date displayed here are in the past, and you do not make any changes, the logger will start recording at the next 15 minute boundary.



To set the time for the recording to start click the hours and/or minutes and type the value you need it to be.



To set the date for the recording to start click the down arrow next to the date.

A calendar will pop up. Select the date you need the logger to start on.

If required, loggers can be set to stop recording at a particular time and date.

Click the Enable Stop tick box, and then set the stop time using the same method described above for setting start time.

To disable stop time click the tick box and remove the tick.



☒ Cyclic Memory ☐ Block Memory

Click Cyclic Memory for continuous recording, overwriting the oldest recordings when the memory fills.

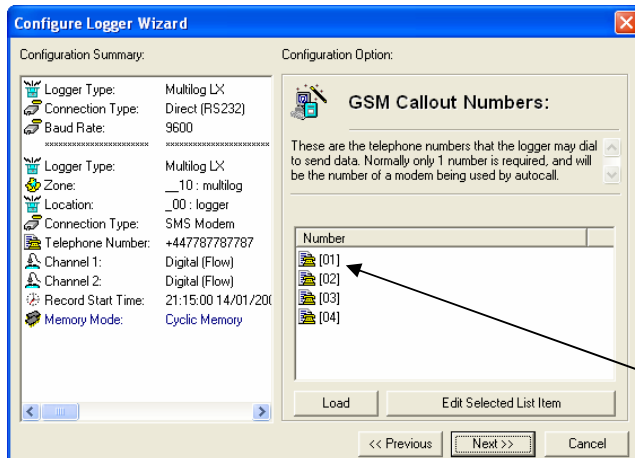
In block Memory mode the logger will record until the memory fills up, and then it will stop.

**Click Next to continue**

# Radwin User Guide

## Start an SMS Logger Recording

### GSM Callout Numbers

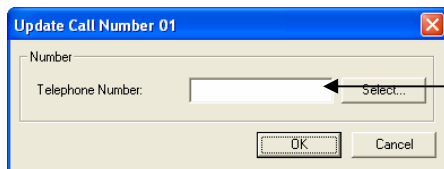


These are the telephone numbers that the logger may dial to send data.

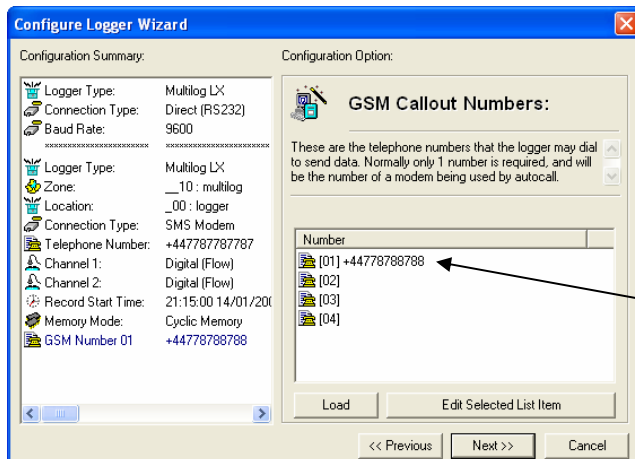
SMS loggers use the numbers listed here to send SMS messages to.

Normally only 1 number is required, and will be the number of a modem being used by Autocall.

Double click an item to edit it.



Type the SMS modem telephone number that the logger will send data messages to (in international format) and the click OK.



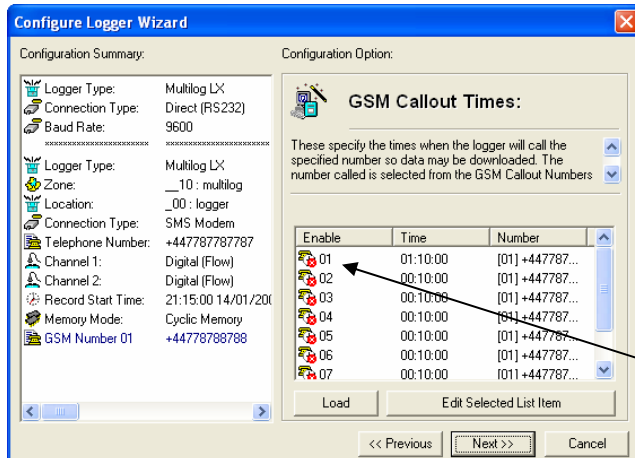
The SMS modem telephone number should now be displayed in the box.

Click Next to continue.

# Radwin User Guide

## Start an SMS Logger Recording

### GSM Callout Times



**Configure Logger Wizard**

Configuration Summary:

- Logger Type: Multilog LX
- Connection Type: Direct (RS232)
- Baud Rate: 9600
- Logger Type: Multilog LX
- Zone: \_10 : multilog
- Location: \_00 : logger
- Connection Type: SMS Modem
- Telephone Number: +447787787787
- Channel 1: Digital (Flow)
- Channel 2: Digital (Flow)
- Record Start Time: 21:15:00 14/01/201
- Memory Mode: Cyclic Memory
- GSM Number 01: +44778788788

Configuration Option:

**GSM Callout Times:**

These specify the times when the logger will call the specified number so data may be downloaded. The number called is selected from the GSM Callout Numbers

Enable	Time	Number
<input type="checkbox"/>	01:10:00	[01] +447787...
<input type="checkbox"/>	00:10:00	[01] +447787...
<input type="checkbox"/>	00:10:00	[01] +447787...
<input type="checkbox"/>	00:10:00	[01] +447787...
<input type="checkbox"/>	00:10:00	[01] +447787...
<input type="checkbox"/>	00:10:00	[01] +447787...
<input type="checkbox"/>	00:10:00	[01] +447787...

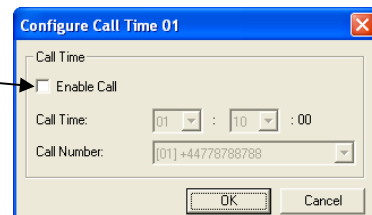
Buttons: Load, Edit Selected List Item, << Previous, Next >>, Cancel

The times when the logger will call (or send an SMS message to) the specified number to transfer data are listed here.

The number called is selected from the GSM Callout Numbers previously entered.

Double click an item to enable and edit it.

Click the Enable Call tick box to enable the call.



**Configure Call Time 01**

Call Time

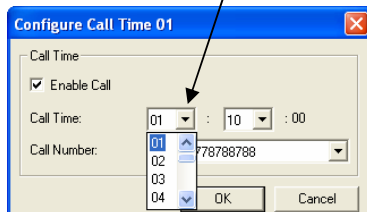
☐ Enable Call

Call Time: 01 : 10 : 00

Call Number: [01] +44778788788

Buttons: OK, Cancel

Then click the hour drop down menu to select the hour of the call.



**Configure Call Time 01**

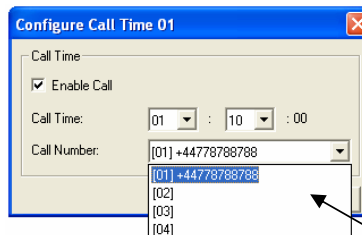
Call Time

☒ Enable Call

Call Time: 01 : 10 : 00

Call Number: [01] +44778788788

Buttons: OK, Cancel



**Configure Call Time 01**

Call Time

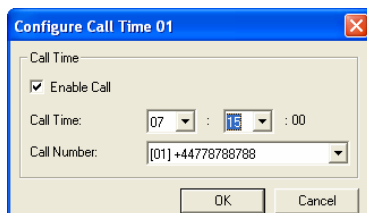
☒ Enable Call

Call Time: 01 : 10 : 00

Call Number: [01] +44778788788

Buttons: OK, Cancel

All the call in numbers you programmed into the previous stage of this manual are listed in this drop down menu. Select the telephone number you need to use.



**Configure Call Time 01**

Call Time

☒ Enable Call

Call Time: 07 : 15 : 00

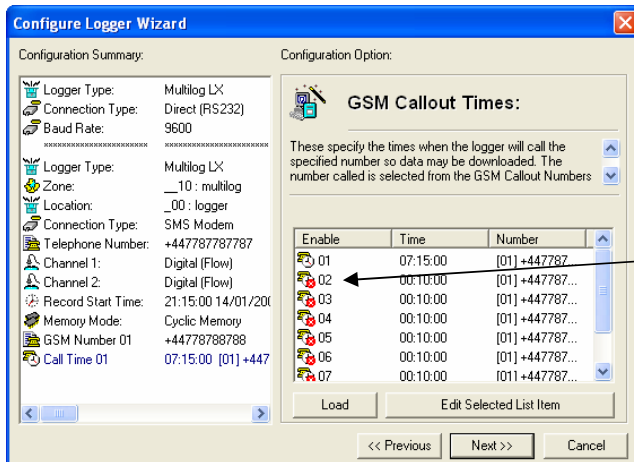
Call Number: [01] +44778788788

Buttons: OK, Cancel

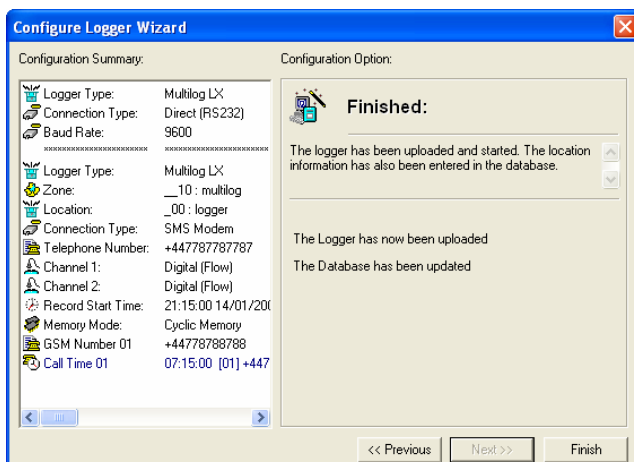
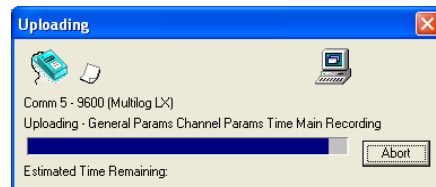
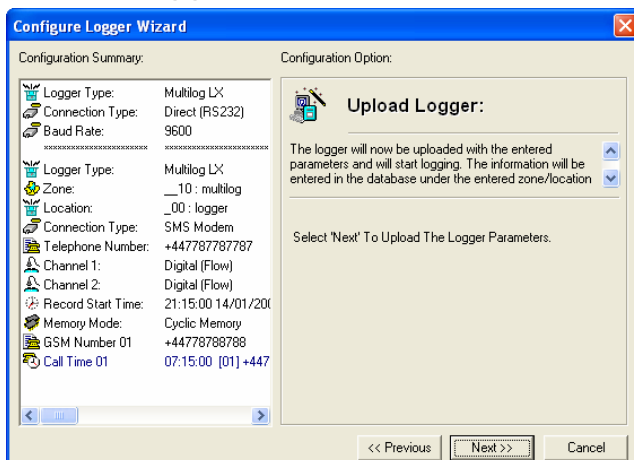
Click OK to continue.

# Radwin User Guide

## Start an SMS Logger Recording



### Upload Logger



### Start Other Radwin Programs

Click the Start Menu at the top of whichever Radwin program you are using.

Click the component you need to use.

