



Ref: FAQ0429

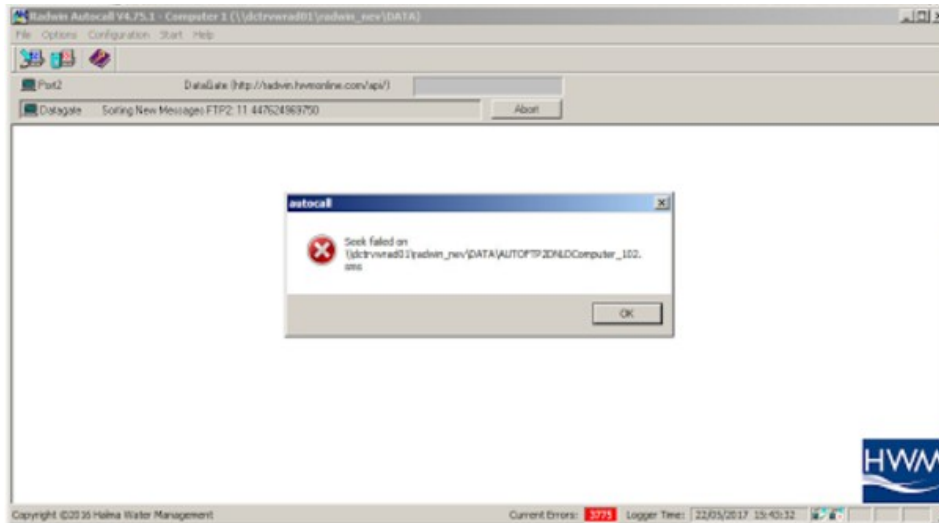
Version: 1.0

Title- Radwin autocall error

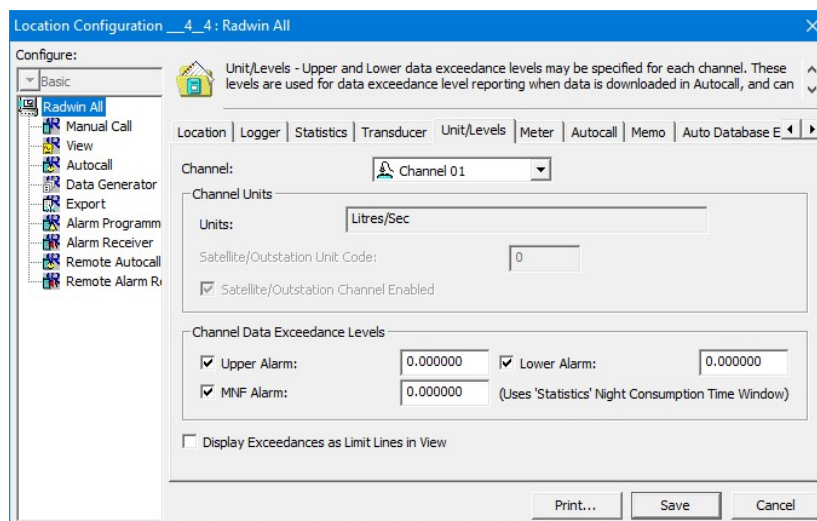
Made By: AB 12/01/2018

(Issue 1)

Radwin Autocall – Upper exceedance level error



Its data value level checking on received data, a bit like high level alarms but checked by Autocall when data is received. These loggers must have Upper level exceedance checking enabled. That is enabled in the locations configuration on the 'Units/Levels' page. There are check boxes to enable Upper, Lower, and MNF value checking, along with value entry fields for them.



Document History:

Edition	Date of Issue	Modification	Notes
1st	12/01/18	Release	