



Ref: FAQ0064

Version: 1.0

Title – SoundSens i change record freq

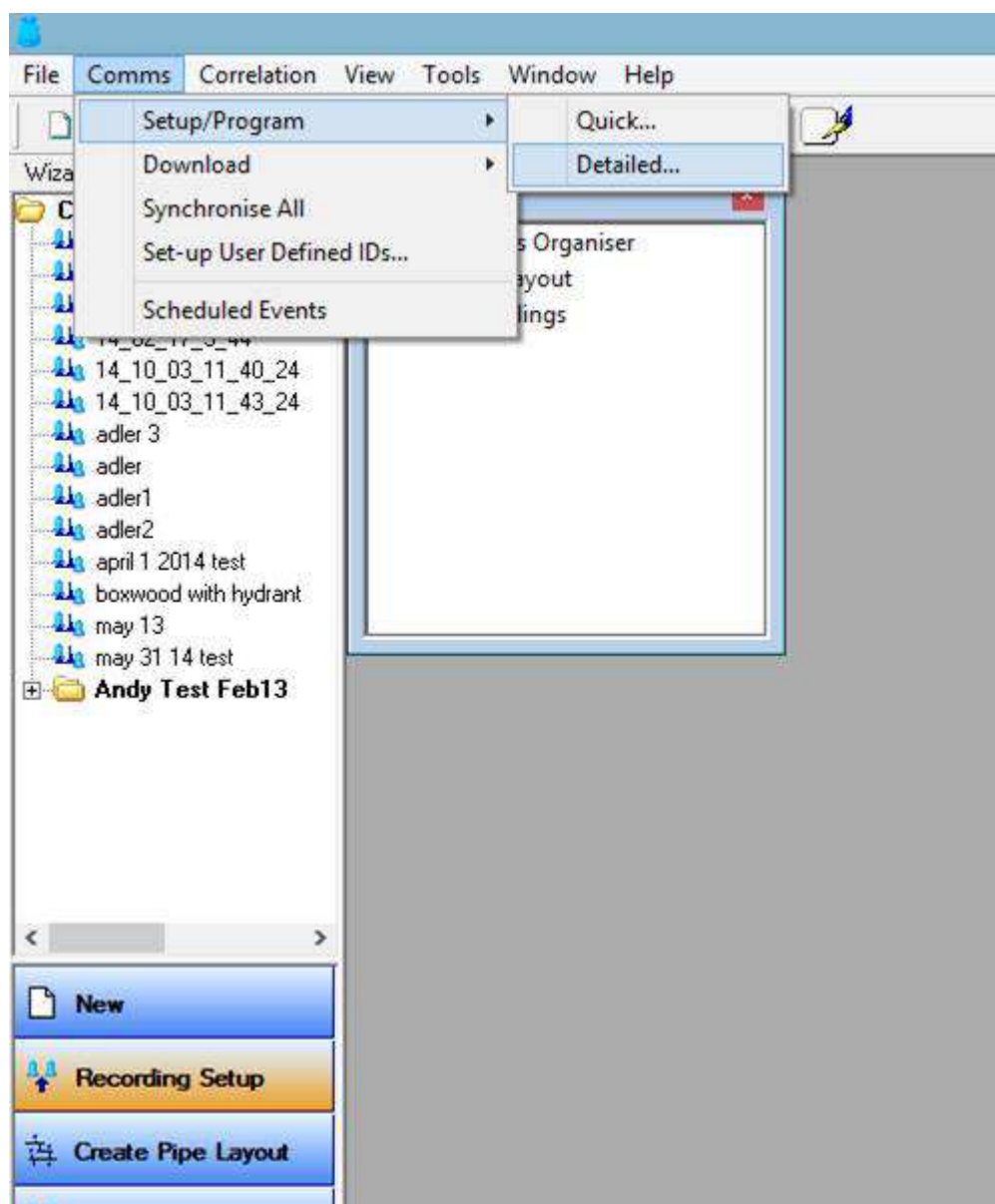
Made By: AB 14/10/14

(Issue 1)

## Question – how can you change the recording frequency of SoundSens i pods

The frequency of Data acquisition can be varied with the pods being set to record at a frequency of your choice. Normally the default setting of 4800Hz is adequate for most leak noise tests.

However if you want to manually set this frequency to an alternative rate you can do so by opening the SSI software and go to Comms>Setup/program > Detailed.... – (as below screen shot)



At the next screen select 'Yes' to synchronise the loggers



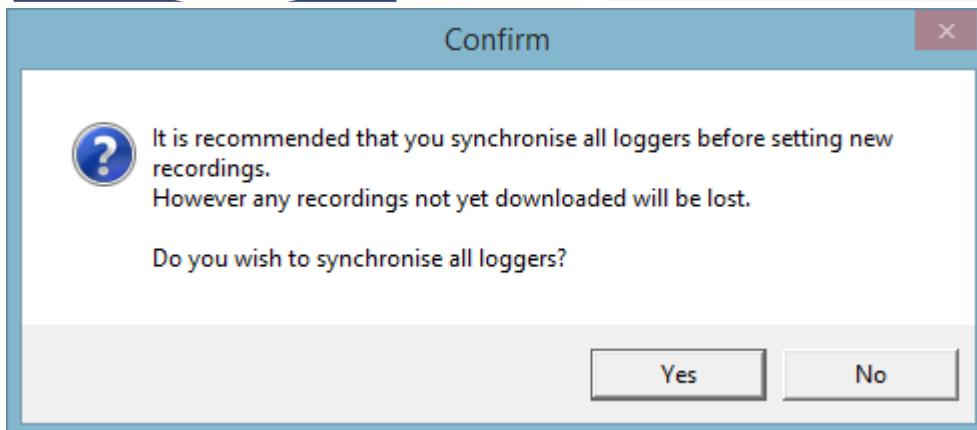
Ref: FAQ0064

Version: 1.0

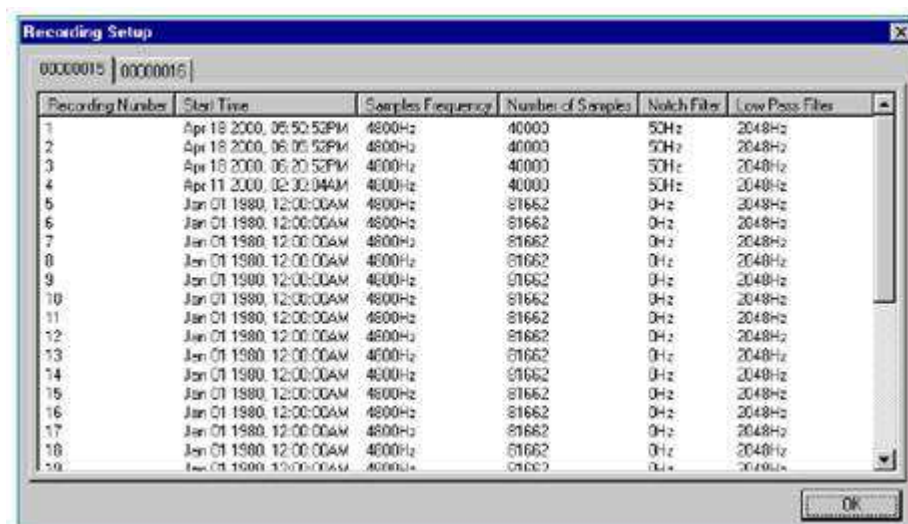
Title – SoundSens i change record freq

Made By: AB 14/10/14

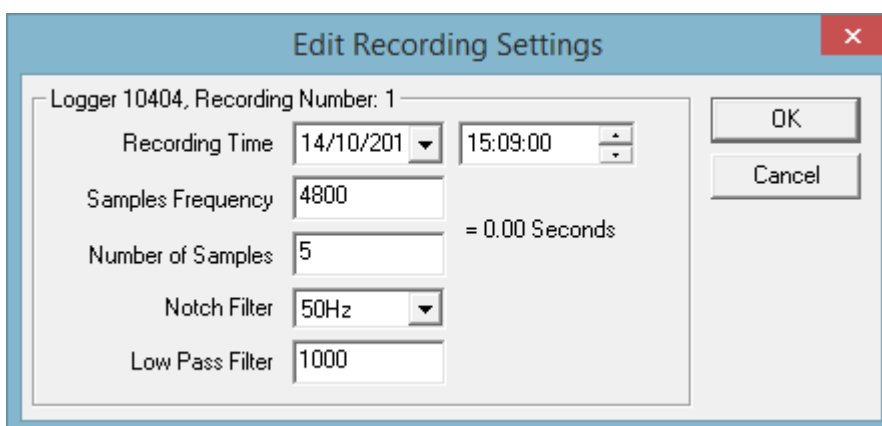
(Issue 1)



At the next screen select one sample line and double click on it -



Enter the recording parameters you require and select 'OK'



This will upload the recording settings to each of the pods for a single recording.  
If you want to apply these settings to a series of recordings then select a recording line from the below screen and right click on it and select 'create series'



Ref: FAQ0064

Version: 1.0

Title – SoundSens i change record freq

Made By: AB 14/10/14

(Issue 1)

Recording Number	Start Time	Samples Frequency	Number of Samples	Notch Filter	Low Pass Filter
1	Apr 18 2000, 05:50:53PM	4800Hz	40000	50Hz	2048Hz
2	Apr 18 2000, 05:05:53PM	4800Hz	40000	50Hz	2048Hz
3	Apr 18 2000, 05:20:53PM	4800Hz	40000	50Hz	2048Hz
4	Apr 11 2000, 02:30:04AM	4800Hz	40000	50Hz	2048Hz
5	Jan 01 1980, 12:00:00AM	4800Hz	81662	0Hz	2048Hz
6	Jan 01 1980, 12:00:00AM	4800Hz	81662	0Hz	2048Hz
7	Jan 01 1980, 12:00:00AM	4800Hz	81662	0Hz	2048Hz
8	Jan 01 1980, 12:00:00AM	4800Hz	81662	0Hz	2048Hz
9	Jan 01 1980, 12:00:00AM	4800Hz	81662	0Hz	2048Hz
10	Jan 01 1980, 12:00:00AM	4800Hz	81662	0Hz	2048Hz
11	Jan 01 1980, 12:00:00AM	4800Hz	81662	0Hz	2048Hz
12	Jan 01 1980, 12:00:00AM	4800Hz	81662	0Hz	2048Hz
13	Jan 01 1980, 12:00:00AM	4800Hz	81662	0Hz	2048Hz
14	Jan 01 1980, 12:00:00AM	4800Hz	81662	0Hz	2048Hz
15	Jan 01 1980, 12:00:00AM	4800Hz	81662	0Hz	2048Hz
16	Jan 01 1980, 12:00:00AM	4800Hz	81662	0Hz	2048Hz
17	Jan 01 1980, 12:00:00AM	4800Hz	81662	0Hz	2048Hz
18	Jan 01 1980, 12:00:00AM	4800Hz	81662	0Hz	2048Hz
19	Jan 01 1980, 12:00:00AM	4800Hz	81662	0Hz	2048Hz

This will show the screen below -

**Setup Recording Series**

**Recording Time**

Start From Recording  At

Number of Recordings

Interval

**Recording Parameters**

Samples Frequency

Number of Samples

Notch Filter

Low Pass Filter

OK Cancel

Insert the settings for your series of recordings and select 'OK' to upload them to the loggers.

The above facilities were extensively used on early versions of SoundSens products (1 & 2) however with the introduction of Soundsens i many of these features were defaulted to simplify the operation and set up – although they are still available in the software it is rare for them to be used with the current equipment.

Edition	Date of Issue	Modification	Notes
1st	14/10/14	Release	



**Ref: FAQ0064**

**Version: 1.0**

**Title – SoundSens i change record freq**

**Made By: AB 14/10/14**

**(Issue 1)**