



Ref: FAQ0160

Version: 1.0

Title –SoundSens software versions

Made By: AB 17/09/15

(Issue 2)

## SoundSens software levels and how to establish your SoundSens equipment version

The new version of software (v3.6 or greater) has been introduced to improve the sensitivity of SoundSens i and therefore increase its potential for detecting leaks. It uses more data per correlation which has the effect of reducing the step sizes in the graphs. It runs in conjunction with new firmware in the SoundSens i suitcase

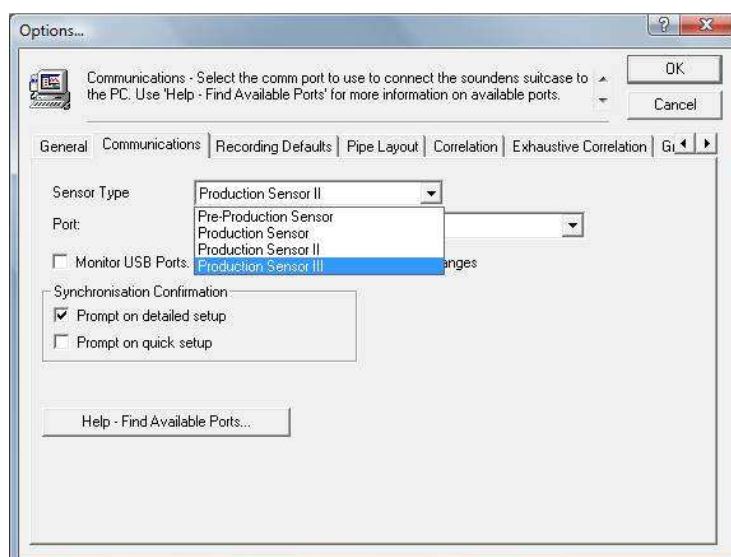
The new version of software (v3.6) is not 'backward' compatible so you need to ensure the correct SoundSens equipment is selected once the software is installed. This can be found from the SoundSens Software opening screen then go to Tools>Options>Communications –

You can check what version of SoundSens you have and what version of software you need as follows -

'Production Sensor' has an Orange sensor with part number 5901,	PC Software v3.5
'Production Sensor II' has a blue sensor part number 5013	PC Software v3.5
'Production Sensor III' has an orange or grey sensor part number 5904	PC Software <b>v3.6</b>

It is important to note that the two versions of the PC Software v3.5 and v3.6 cannot be used on the same PC as installations automatically update older versions.

Also while you are on this screen you should ensure that the 'monitor USB ports' box as shown (to the left of Production Sensor III highlighted in the screen shot below.) is **Unchecked (i.e no tick in the box)** as on some PC's (particularly laptops) this can cause the software to freeze during use.



### Document History:

Edition	Date of Issue	Modification	Notes
1st	19/04/12	Release	
2nd	17/09/15	Format update	