



Ref: FAQ0428

Version: 1.0

Title –MCT PC software with Windows10

Made By: AB 11/01/18

Issue2

## How to configure your Windows 10 PC for use with MC Touch PC Software

### Step 1 Download and configure the MCTouch PC Software

Download Touch Pro Software PC software from the HWM or FCS Website

Extract the SW-068-01 102 - PE MCT PC Software to desktop

Right click on SW-068-01 102 - PE MCT PC Software icon

Then click > Properties > compatibility > Run compatibility trouble shooter

Click > Try recommended settings > Test the program

The MicroCorr Touch Software should now launch

Click > Next > Yes, save these settings for this program > Close.

### Step 2 Download and install Windows Mobile Device Driver and configure it for your PC

To determine whether your version of Windows 10 is 32-bit or 64-bit, click **Start**, right-click **Computer**, and then click **Properties**. The version is listed after System Type.

- 32-bit version download  
<http://www.microsoft.com/downloads/details.aspx?FamilyId=46F72DF1-E46A-4A5F-A791-09F07AAA1914&displaylang=en>
- 64-bit version download  
<http://www.microsoft.com/downloads/details.aspx?FamilyId=4F68EB56-7825-43B2-AC89-2030ED98ED95&displaylang=en>

Click > Start > Search > Computer Management

Click > Services & Applications > Services.

Scroll down and right-click on “Windows Mobile-2003-based device connectivity” select Properties > Log On.

Switch to “Local System account” with checking “Allow service to interact with desktop” then click OK.

### Step 3 Communicate with MCTouch basestation.

Connect MC Touch Basestation to the PC using the USB cable and switch it on.

Open Windows Mobile Device Driver – allow it time to connect to the Touch base station.



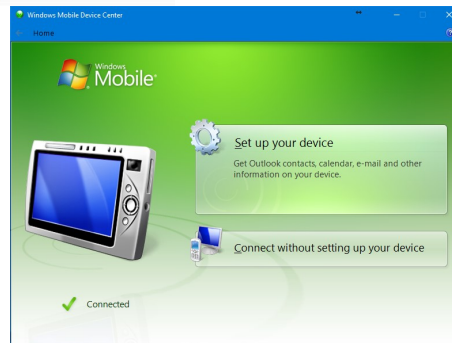
Ref: FAQ0428

Version: 1.0

Title –MCT PC software with Windows10

Made By: AB 11/01/18

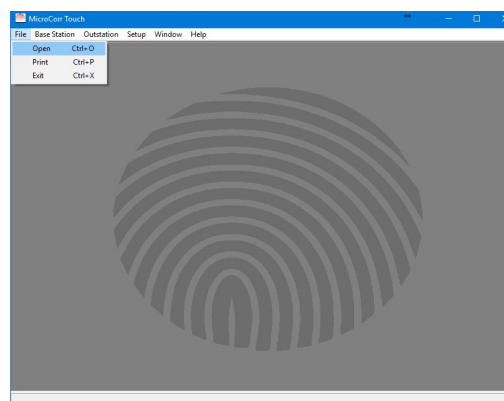
Issue2



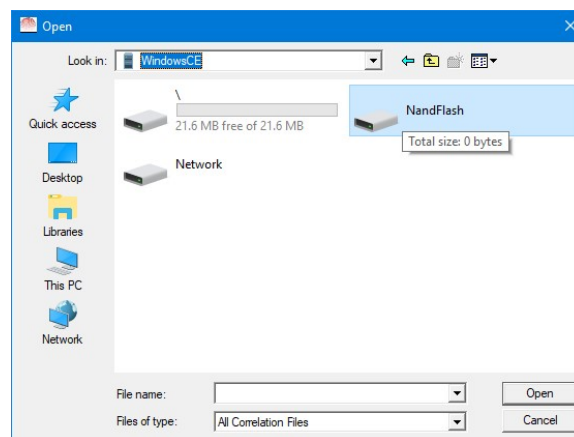
Select 'connect without setting up your device'

### Option 1 – quick view without saving

Open MCTouch PC software > File > Open –



Browse for the device (Windows CE in this example) open Nandflash and the Data folder



Search for the correlation file you want and open it -



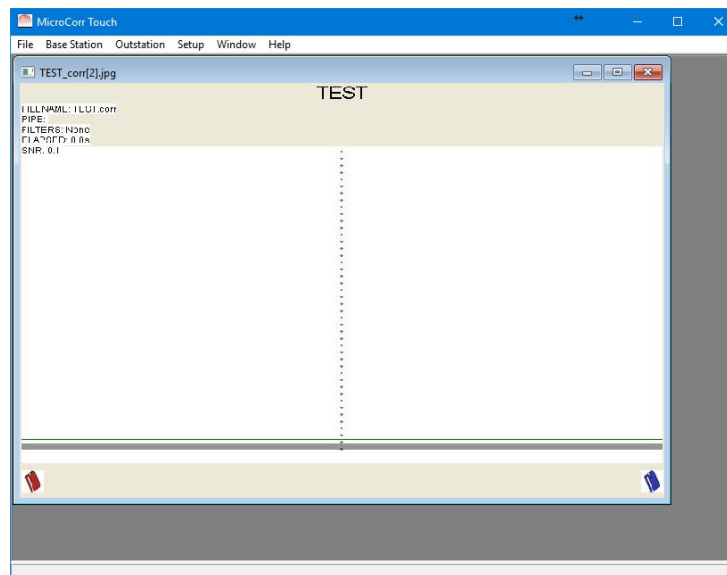
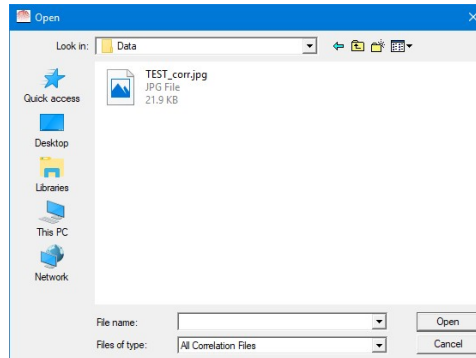
Ref: FAQ0428

Version: 1.0

Title –MCT PC software with Windows10

Made By: AB 11/01/18

Issue2



## Option 2 – Save correlation files to your PC and view with MCTouch software

Connect the MCTouch basec station to tyour PC and open Windows Mobile device Center –





Ref: FAQ0428

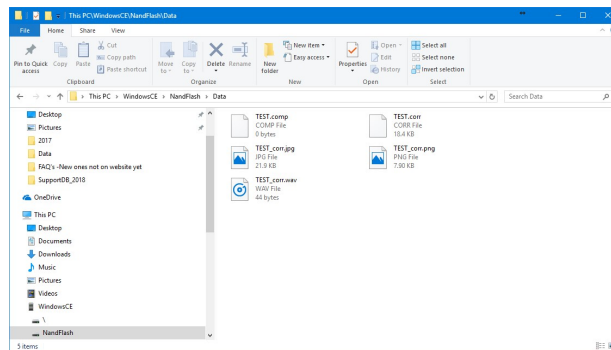
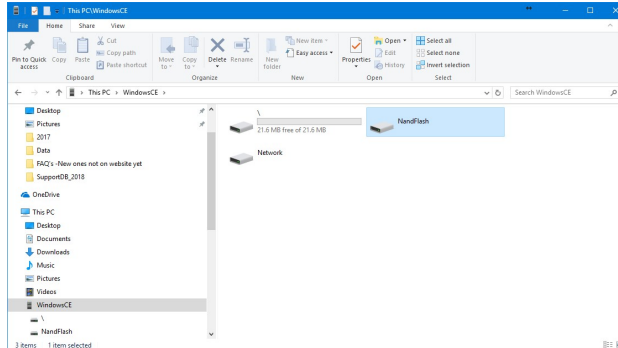
Version: 1.0

Title –MCT PC software with Windows10

Made By: AB 11/01/18

Issue2

Ensure the device is 'connected' and open 'File Management' > 'Browse the contents of your device' – find the device (in this example its WindowsCE) and open it, open the Nandflash folder and the Data folder. Locate the correlation file(s) you are interested in and save them to a folder on your PC 'C' Drive (in Documents).



Copy and paste the correlation files you want from the above screen to a folder in 'My Documents' to store them on your PC.

Open MCTouch PC software > File > Open and Browse to the above 'My Documents' folder to view each of the saved correlation files

#### Document History:

Edition	Date of Issue	Modification	Notes
1st	04/01/18	Release	
2nd	11/01/18	Corrected process	