

Intelligens/COMLog™IS User Manual 2/2

Safety Supplement - Version 1.1



Warning: This manual contains important safety and operating information. Please read, understand and follow the instructions / warnings contained in this manual.

Label drawings and Entity Parameters

Intelligens and COMLog™IS



Note – Information for this label is duplicated on the front face label

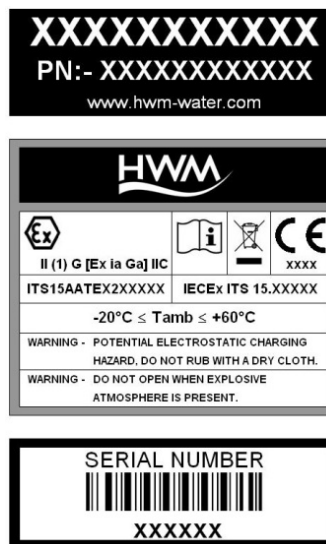
HWM contact address (appears on all three parts)



Battery Pack INTBATTPACK/7V2/H95



Serial Communications lead COMMS USB/IS and COMMS-Y USB/IS



Output Parameters	Input Parameters
Um = 250 V Uo = 5.88 V Io = 11.88 mA Po = 17.46 mW Co = 42 uF Lo = 250 mH	Ci = 0 Li = 0

	Output Parameters	Input Parameters
External Power Inputs	Uo = 5.4 V Io = 1.1 mA Po = 1.5 mW Co = 1.4 uF Lo = 3.3 uH	Ui = 12 V Ii = 3.3 A Pi = 9 W Ci = 0 Li = 0
Flow/Status Inputs	Uo = 5.88 V Io = 1.19 mA Po = 1.75 mW Co = 43 uF Lo = 24 H	Ci = 0 Li = 38 uH
Configuration Interface	Uo = 5.88 V Io = 11.88 mA Po = 17.46 mW Co = 42 uF Lo = 249 mH	Ci = 40 pF Li = 1 mH
SonicSens Ultrasonic Level Sensor	Uo = 5.4 V Io = 16 mA Po = 23 mW Co = 64 uF Lo = 130 mH	Ui = 7.14 V Ii = 15 mA Pi = 26 mW Ci = 1 uF Li = 1 mH
GSM Antenna Simple Apparatus	Uo = 12V Io = 1.2uA Po = 0.02mW Co = 1.4uF Lo = 24 MH	Ci = 0 Li = 0
Pulse Replication Outputs	Uo = 5.4V Io = 1.09mA Po = 1.5mW Co = 125nF Lo = 1.1mH	Ui = 24V Ii = 174mA Pi = 720mW Ci = 0 Li = 0
PT100 Temperature Probe Simple Apparatus	Uo = 5.88V Io = 24mA Po = 35mW Co = 43uF Lo = 60mH	Ci = 0 Li = 1mH
External Pressure Sensor	Uo = 5.88V Io = 0.64A Po = 0.9W Co = 42uF Lo = 32uH	Ci = 1 uF Li = 38 mH

Part Number make-up – H95/xxxxxxxx/x/IS

H95	/xxxxxxxx	/x	/xx	/IS
HWM Logger Type No	Antenna, Communications & Input Channel Configuration	Outputs	Modem opt	Safety Designation

See appendix 4 in the Basic User Guide Part 1/2 (MAN-142-0001) for details of the options available



Warning:

For the Intelligens or COMLog™IS, the connected intrinsically safe equipment must be certified with Entity Parameters.

Any intrinsically safe equipment intended for connection to the Intelligens or COMLog™IS must have compatible Entity Parameters and be connected and installed as per the manufacturer's instructions.

Configuration of Intelligens or COMLog™IS

Serial communications is provided via the serial port. Communication to the logger to setup/configure the data logger is via a dedicated Intrinsically Safe Serial Communications lead (**COMMS USB/IS or COMMS-Y USB/IS**) that plugs into a PC USB port.



Warnings:

- POTENTIAL ELECTROSTATIC CHARGING HAZARD, DO NOT RUB WITH A DRY CLOTH.
- POTENTIAL ELECTROSTATIC CHARGING HAZARD - THE INSTALLATION BRACKET MUST BE APPROPRIATELY CONNECTED TO EARTH IF ATTACHED TO A NON-CONDUCTIVE SURFACE.
- DO NOT OPEN WHEN EXPLOSIVE ATMOSPHERE IS PRESENT.
- DO NOT REPLACE BATTERY WHEN AN EXPLOSIVE ATMOSPHERE IS PRESENT.
- ONLY USE SPECIFIED COMMUNICATION CABLE **COMMS USB/IS or COMMS-Y USB/IS**.
- ONLY THE **INTELLIGENS/COMLOG™IS** IS ALLOWED TO BE IN THE HAZARDOUS AREA. IT CAN ALSO BE CONFIGURED IN THE HAZARDOUS AREA, BUT WILL BE VIA THE SPECIFIED COMMUNICATION CABLE WHICH SHALL BE LOCATED WITH THE COMPUTER IN THE NON-HAZARDOUS AREA.
- THE COMPUTER USED TO CONFIGURE THE **INTELLIGENS/COMLOG™IS** IN THE HAZARDOUS AREA MUST NOT BE CONNECTED TO THE MAINS ELECTRICAL SUPPLY OR ANY OTHER EQUIPMENT THAT IS CONNECTED TO A MAINS SUPPLY DURING CONFIGURATION.



Warning: Contains Lithium Batteries

If batteries are exposed - do not short circuit, re-charge, puncture, incinerate, crush, immerse, force discharge or expose to temperatures above the declared operating temperature range of the product. **Risk of fire or explosion.**
These batteries are sealed units which are not hazardous when used according to the recommendations.

Note:- The GPRS modem fitted has a maximum output of up to $\leq 2W$ of RF Power.

Additional information is available in the Basic User guide Part 1/2 (MAN-142-0001) available from the HWM website.

If further support or assistance is required, please contact HWM Technical Support on 01633 489479 (option 5) or e-mail cservice@HWM-Water.com

HWM-Water Ltd
Ty Coch House
Llantarnam Park Way
Cwmbran
NP44 3AW
United Kingdom
+44 (0)1633 489479
www.HWM-water.com



MANEX-142-0002-E (Intelligens - COMLog IS Safety Supplement).docx

©HWM-Water Limited. This document is the property of HWM-Water Ltd. and must not be copied or disclosed to a third party without the permission of the company. Copyright reserved.