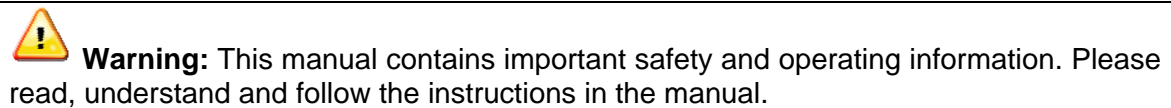


## Aquavison Flushing Unit Setup

[illegible]

## Legionella Flushing Unit Setup

### Equipment for Legionella Flushing System:

- 553-007 USB Receiver Module
- 535-001 or -002 Legionella Flushing Unit
- PC running **AquaVision** software

### Preparation:

1. Connect the Legionella unit to the appropriate pipes (hot, cold & output).
2. Plug-in the USB receiver into the USB port and wait for the driver to be installed (first time used).
3. Start the **Aquaflush Programmer.exe** PC application.
4. Select the correct serial port the USB receiver is connected to. This will vary from one PC to another. It may be necessary to change the COM port of the USB receiver manually. This is only required if the USB receiver is listed higher than COM10 (see appendix for details on how to modify).
5. To start the unit, place a magnet over the test point for 3 seconds. The **Unit ID**, **Received Time** and **Temperature** fields should all be filled in as well as the **Status** window. Repeat if required.

[illegible]

## Obtain Legionella Unit Setup

1. Enter the transmitter ID into the **Unit ID** field.
2. Press the **Configuration Unit** button.

[illegible]

3. The unit will ask to swipe a magnet over the test point for 3 seconds. If the link fails the following screen shot will appear. Check the range and position of the RF link and ensure the setup is correct if this occurs.
4. Once the USB receiver has gained the configuration details from the Legionella unit the following message should appear in the **Status** window – **Configuration Received**. The valve times, test days, working hours etc. will be updated.

[illegible]

## Programming Legionella Transmitter

1. Enter the transmitter ID into the **Unit ID** field.
2. Update the following fields: **Test Days**, **Valve Option**, **Valve Open Times** and **Working Hours**.
3. Once the new configuration has been setup in the PC software, press the **Configure Unit** button to sent the new profile to the Legionella unit.

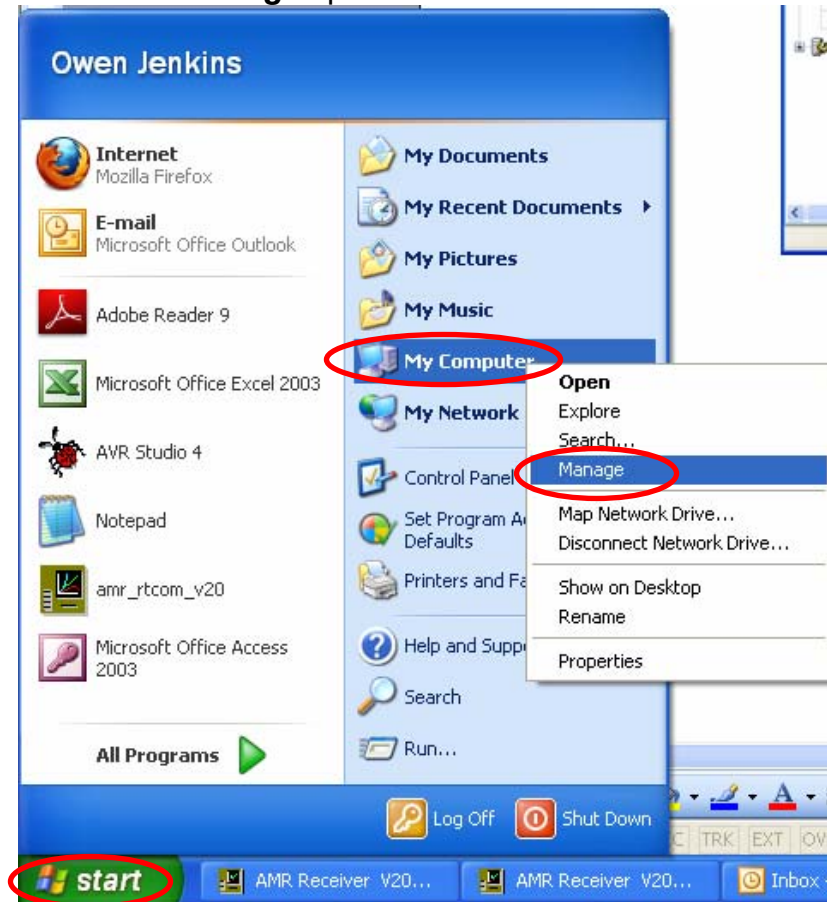
The screenshot shows the aquavision software interface. The 'Unit ID' field is set to 103482. The 'Configure unit' button is highlighted with a red circle. The 'Test days' section shows Sunday, Friday, and Saturday selected. The 'Valve Option' is set to Dual. The 'Valve Open Times' for Cold is 2 minutes and for Hot is 1 minute. The 'Working hours' are set from 0:00 to 0:00. The 'Status' window shows 'ACK received - Unit Configured'.

4. The unit will ask to swipe a magnet over the test point for 3 seconds. If the link fails the following screen shot will appear. Check the range and position of the RF link and ensure the setup is correct if this occurs.
5. When the unit has successfully received the new profile, the following message should appear in the **Status** window – **ACK Received – Unit Configured**.

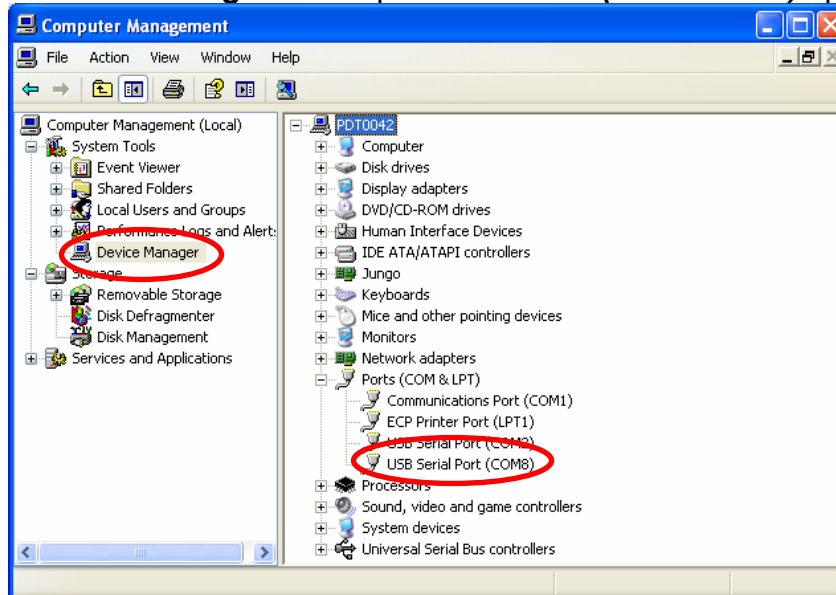
The screenshot shows the aquavision software interface. The 'Unit ID' field is set to 103482. The 'Configure unit' button is highlighted with a red circle. The 'Test days' section shows Sunday, Friday, and Saturday selected. The 'Valve Option' is set to Dual. The 'Valve Open Times' for Cold is 2 minutes and for Hot is 1 minute. The 'Working hours' are set from 0:00 to 0:00. The 'Status' window shows 'ACK received - Unit Configured'.

## Appendix

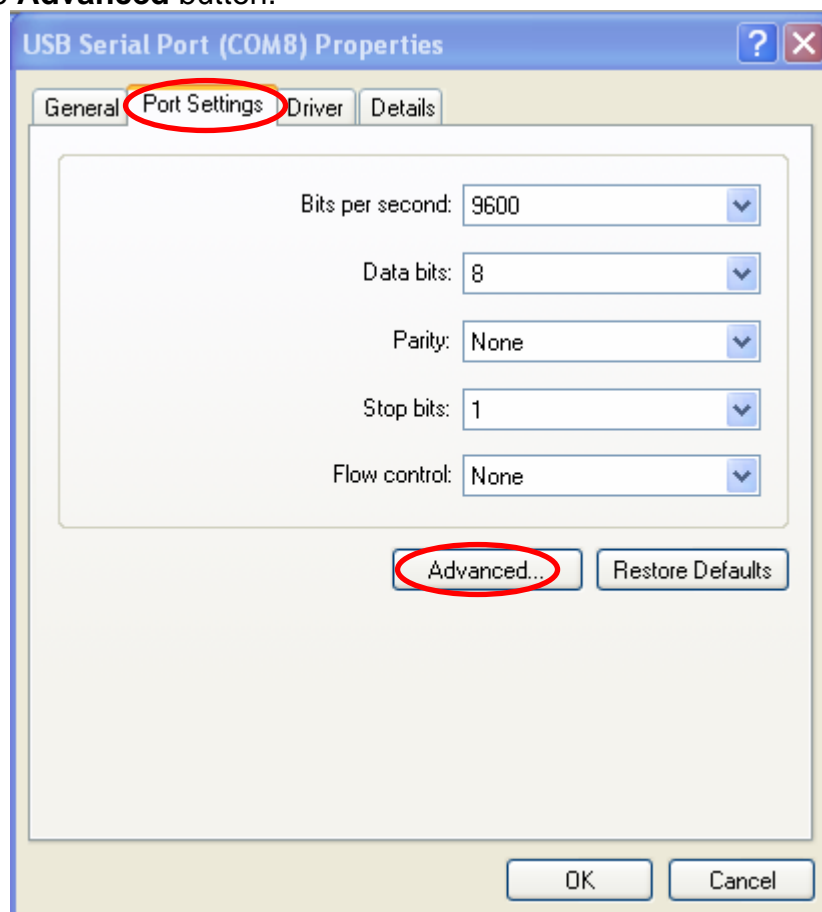
Press **Start** button, select **My Computer** with right mouse button (context menu) and select the **Manage** option.



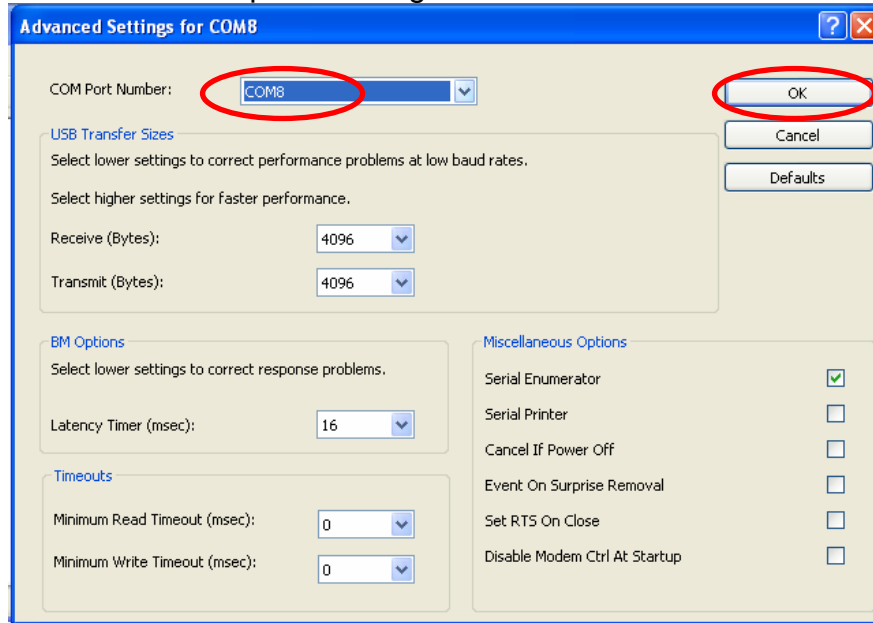
Select the **Device Manager** and expand the **Ports (COM & LPT)** option.



Double click on the selected COM port. Click on the **Port Settings** tab and select the **Advanced** button.



Select an appropriate COM port in the drop-down menu (e.g. less than 10), click OK button and accept the changes.



HWM-Water Ltd  
Ty Coch Ltd  
Llantarnam Park Way  
Cwmbran  
NP44 3AW

