

Patroller II / Airo A25 PDA Setup Procedure



Doc No: 096-0011
Issue Date: 27/09/10
Author: IC

Setting Up



Halma Water Management

The Airo A25 PDA has built-in GPS hardware that can be used by the Patroller II to record the locations of loggers during deployment, using either the Deploy screen or the Lift and Shift screen.

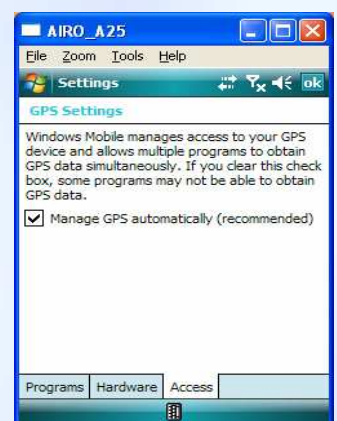
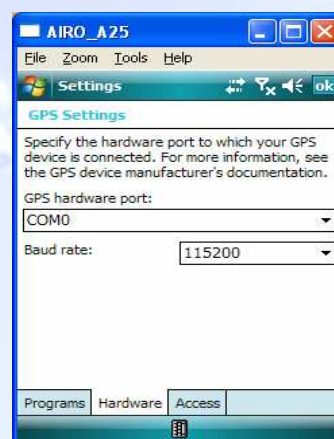
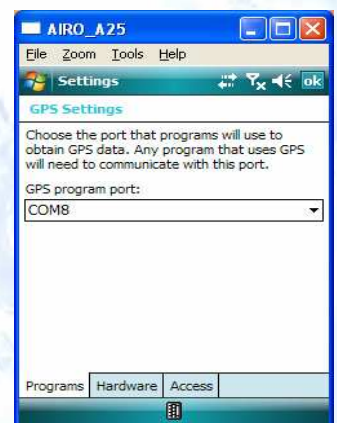
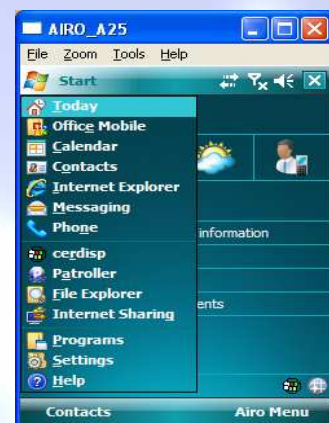
Before GPS can be used, both the PDA and the Patroller application must be configured correctly to ensure correct communication between the hardware and the software.

PDA GPS Setup

1. Select the 'Start / Settings' menu item.
2. Select the System tab.
3. Tap the External GPS icon to start the GPS Settings program.
4. On the Programs tab, select 'COM8' from the 'GPS program port' drop-down box.

If an error message appears here stating that the GPS program port and hardware port cannot be the same value, go to the next step and then repeat this step.

5. On the Hardware tab, select 'Com0' from the 'GPS hardware port' drop-down box and '115200' from the 'Baud rate' drop-down box.
6. On the Access tab, ensure that the 'Manage GPS automatically' box is ticked.
7. Tap the 'OK' button at the top right of the screen to exit the GPS Settings program.
8. Tap the 'X' in the top-right corner of the screen to close the Settings screen.



Setting Up



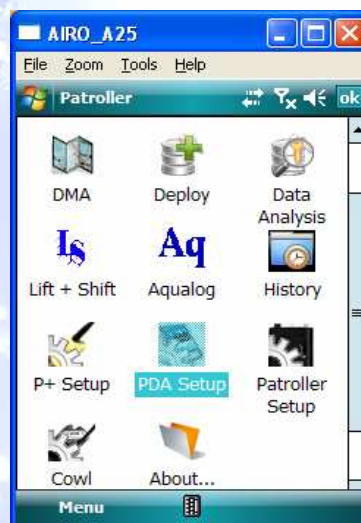
Halma Water Management

The Airo A25 PDA has built-in GPS hardware that can be used by the Patroller II to record the locations of loggers during deployment, using either the Deploy screen or the Lift and Shift screen.

Before GPS can be used, both the PDA and the Patroller application must be configured correctly to ensure correct communication between the hardware and the software.

Patroller GPS Setup

1. Start the Patroller software by selecting the Start/Patroller menu item. The software will take a few seconds to load.
2. Open the PDA Setup screen – see your administrator if the PDA Setup icon is not visible.
3. Ensure that the 'Enable GPS deployment' box is ticked.
4. Tap the 'Save' button at the bottom-left corner of the screen.
5. After the settings have been stored, the word "Saved" will be shown on the screen.
6. Tap the 'X' in the top-right corner of the screen to close the PDA Setup screen.



Getting Connected



Halma Water Management

The GPS module can be used to show and store the locations of the loggers when deployed using the “Deploy” screen or the “Lift & Shift” screen. If the setup procedures have been followed correctly, the GPS module should start working automatically when the “Deploy” or “Lift & Shift” screens are entered.

For successful functionality, the PDA must have a clear view of the sky in order to track as many satellites as possible. In built-up areas or enclosed spaces, GPS reception will be limited and the PDA may not be able to receive enough information to calculate its position.

When operating inside a vehicle, if GPS reception is poor, an external GPS antenna may be fitted to the Airo using the connector on the left-hand side of the PDA.

GPS Connection

1. On entering the “Lift & Shift” screen, the GPS Status indicator will show “Initialising”.

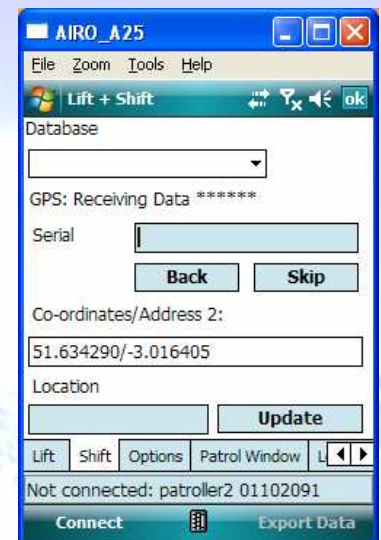
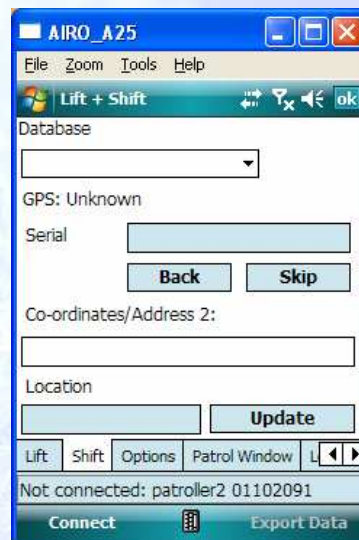
If the status indicator shows “Disabled”, please go to the Connection Problem box.

2. After a short time, the status indicator will change to show “Unknown”.

If this does not happen within 5 minutes, please go to the Connection Problem box.

3. When a GPS fix has been found, the status indicator will show “Receiving Data”.

If this does not happen within 5 minutes, please go to the Connection Problem box



Connection Problem?

1. If the Patroller software shows an error message when GPS function is needed, it usually means that the GPS is not configured correctly. Please refer to the previous page and begin the GPS configuration procedure again.
2. If the GPS status shows “Unknown” for a long time it means that either the GPS is not configured correctly, or that GPS satellite reception has been lost. Please check that the GPS configuration procedure has been successfully completed. If it has been, please check that you have a clear view of the sky. Tall buildings and enclosed spaces will cause poor reception. You may need to consider using an external GPS antenna

Changing Settings



Halma Water Management

Power Saving Setup

The Airo PDA has a number of power-saving options designed to maximise battery life. In some cases, these features must be enabled in order to save power, but when using with the Patroller must be disabled. Failure to do so can initiate the auto-power-down features of the PDA, losing Bluetooth connectivity and causing problems with software functionality and data reception. The sections below describe which features should be enabled and which should be disabled.

To maximise the battery life, the PDA should be switched off immediately after use and put on to charge as soon as possible. Even when switched off, the battery will become depleted after approximately 16 hours.

GPRS/ Phone Power Settings

The GPRS / phone function of the PDA requires a considerable amount of battery power as it is constantly switched on listening for incoming calls, SMS messages and GPRS data. Having this module powered when not in use will have a severe impact on the battery life of the PDA, and so should be switched off at all times unless explicitly required.

1. Select the "Start/Settings" menu item.
2. Select the "Connections" tab.
3. Tap the "Wireless Manager" icon to start the Wireless Manager screen.
4. Tap the "Phone" area/button only if the label beneath this indicates that the phone is switched on.
5. Tap "Done" to exit the Wireless Manager screen.
6. Tap the "X" in the top right corner of the screen to close the Settings screen.



Changing Settings

Power Saving Setup

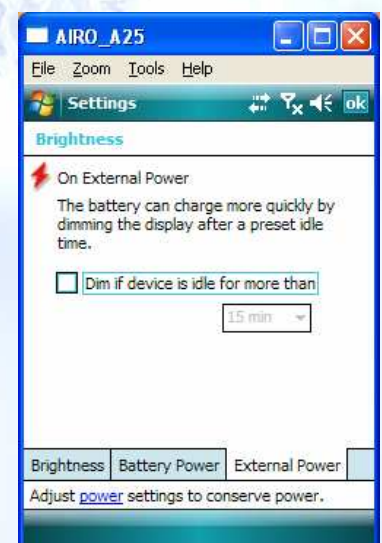
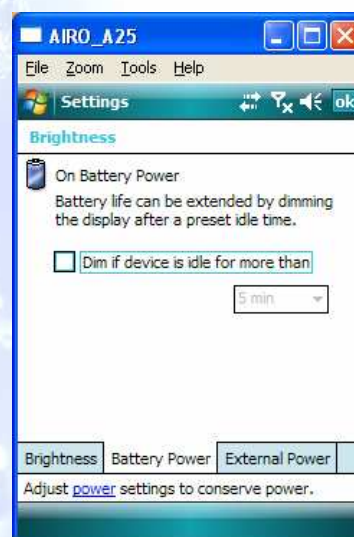
The Airo PDA has a number of power-saving options designed to maximise battery life. In some cases, these features must be enabled in order to save power, but when using with the Patroller must be disabled. Failure to do so can initiate the auto-power-down features of the PDA, losing Bluetooth connectivity and causing problems with software functionality and data reception. The sections below describe which features should be enabled and which should be disabled.

To maximise the battery life, the PDA should be switched off immediately after use and put on to charge as soon as possible. Even when switched off, the battery will become depleted after approximately 16 hours.

Screen Brightness

The power-saving option for the screen should be switched off to ensure that the screen is visible at all times, even if the user has not used the PDA for some time; during a drive-by patrol, for example.

1. Select the 'Start / Settings' menu item.
2. Select the "System" tab.
3. Tap the "Brightness" icon to start the Brightness settings screen.
4. On the "Battery Power" tab, make sure that the 'Dim if device is idle ...' box is not ticked.
5. On the "External Power" tab, make sure that the 'Dim if device is idle ...' box is not ticked.
6. Tap 'OK' to exit the Brightness settings screen.
7. Tap the 'X' in the top-right corner of the screen to close the Settings screen.



Changing Settings

Power Saving Setup

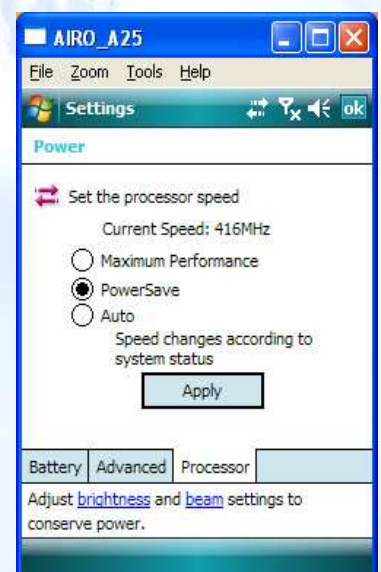
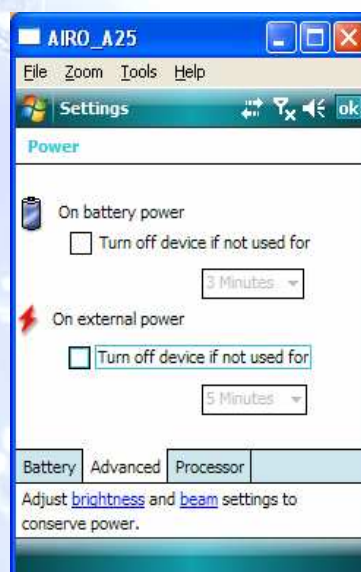
The Airo PDA has a number of power-saving options designed to maximise battery life. In some cases, these features must be enabled in order to save power, but when using with the Patroller must be disabled. Failure to do so can initiate the auto-power-down features of the PDA, losing Bluetooth connectivity and causing problems with software functionality and data reception. The sections below describe which features should be enabled and which should be disabled.

To maximise the battery life, the PDA should be switched off immediately after use and put on to charge as soon as possible. Even when switched off, the battery will become depleted after approximately 16 hours.

Power Settings

In order to maximise battery life, the PDA should be set to run at a slower speed, but must not switch off after any period of inactivity:

1. Select the 'Start / Settings' menu item.
2. Select the "System" tab.
3. Tap the "Power" icon to start the Power settings screen.
4. On the "Advanced" tab, make sure that both 'Turn off device if not used ...' boxes are not ticked.
5. On the "Processor" tab, select the 'PowerSave' option, and tap the 'Apply' button if it is enabled.
6. Tap 'OK' to exit the Power settings screen.
7. Tap the 'X' in the top-right corner of the screen to close the Settings screen.



Power Saving Setup

The Airo PDA has a number of power-saving options designed to maximise battery life. In some cases, these features must be enabled in order to save power, but when using with the Patroller must be disabled. Failure to do so can initiate the auto-power-down features of the PDA, losing Bluetooth connectivity and causing problems with software functionality and data reception. The sections below describe which features should be enabled and which should be disabled.

To maximise the battery life, the PDA should be switched off immediately after use and put on to charge as soon as possible. Even when switched off, the battery will become depleted after approximately 16 hours.

Beam Settings

In order to save battery power, the infrared (irDA) port should be switched off at all times

1. Select the 'Start / Settings' menu item.
2. Select the "Connections" tab.
3. Tap the "Beam" icon to start the Beam settings screen.
4. The 'Receive all incoming beams' box must not be ticked.
5. Tap 'OK' to exit the Power settings screen.
6. Tap the 'X' in the top-right corner of the screen to close the Settings screen.

