

## Tmic: WARRANTY

All equipment is warranted by HWM-Water Ltd to be free from defect in materials and workmanship under normal use for a period of one year from the date shipped to the original customer. This warranty is only valid if the equipment:

1. is properly installed and operated under conditions of normal use in accordance with HWM's published instructions set out in the manual;
2. is operated in compliance with federal, state, county and local codes and,
3. is operated in accordance with standard industry practices.

As the exclusive remedy for any breach of warranty, HWM will repair or replace (at HWM's option) the non-conforming equipment. HWM shall have no liability for incidental, special, punitive or consequential damages arising from any defect in, or malfunction of, the equipment to any party. This warranty does not cover any costs incurred for the removal or installation of equipment.

If any problems occur, you should notify HWM or its authorised representative, giving full details of the problem, the model and serial numbers of the equipment and the HWM invoice number the equipment was shipped against. You will receive technical advice and / or shipping instructions depending on the nature of the problem. If the problem cannot be resolved you will be issued with an RMA number and a return address label so that the products can be shipped back to HWM for inspection. Once we have reviewed and confirmed that the product is in warranty, we will contact you to confirm what action we will be taking to resolve the issue.

**All warranty and service activity must be undertaken by an authorised representative of HWM. The express warranty is in lieu of all other representations or warranties, express, implied or statutory and specifically excludes and warranty of merchantability or fitness for a particular purpose. There are no warranties that extend beyond the description on the face hereof. No parties or affiliates can make any warranty, promises or representations either written or oral to the quality of products other than what is set out herein.**

Part number : MAN-092-0001-C

## Tmic Quick Start Guide

This guide covers only the most basic operations including battery assembly, headphone pairing and basic use.

## Introduction

Tmic is a high performance and easily used electronic listening stick designed for general acoustic monitoring. Lightweight and portable (fitting into a shirt pocket) the system features a visual indication of leak noise levels, and excellent sound reproduction through wireless, radio headphones.

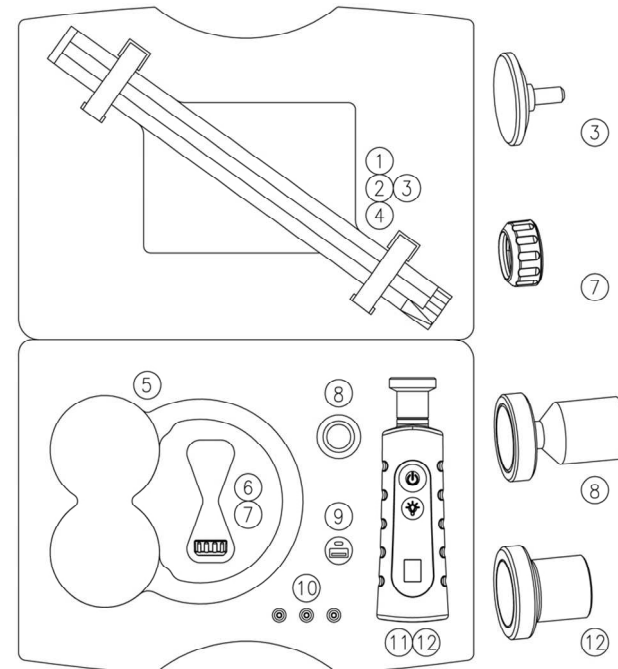
The sensor tip (or one of a variety of sensor tip adapters) is placed on the fitting to be monitored, a simple push button operates the unit and immediately audio and visual indication of the presence of leak noise is heard. Sensitivity levels are far beyond that possible with the human ear and mechanical listening sticks.

Tmic is a sensitive electronic device, please ensure the operating instructions are followed, the wrist strap is always used and the unit is not dropped.

Do not store the Tmic unit in direct sunlight.

For further information please refer to the company website at [www.hwm-water.com](http://www.hwm-water.com)

HWM reserves the right to change any product specification without prior notice.



### Item Check List

1. Extension Pole Middle
2. Extension Pole End with
3. Extension Pole Bracket attached
4. Extension Pole Tip
5. Headphones
6. Headphones Charge Cable
7. Plastic Sensor Cap
8. Extension Pole Magnet Coupling
9. USB Charger (Optional)
10. Batteries [LR03 AM4 1.5v] x3
11. Tmic unit with
12. Standard Magnet Coupling attached

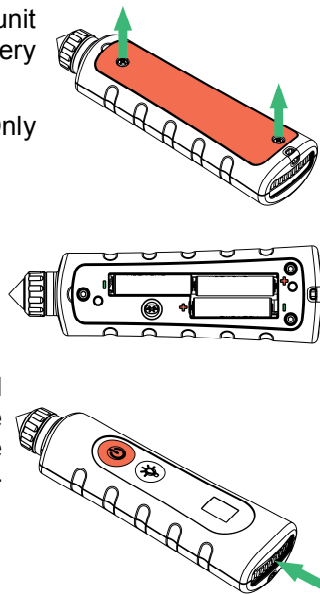
## 1. Inserting the batteries and checking battery status

1.1 Undo the 2 screws in the underside of the Tmic unit using a small Posi-drive screwdriver, remove the battery cover.

1.2 Insert 3 AAA batteries in the orientation as shown. Only AAA Alkaline LR03 AM4 1.5v batteries to be used. Do not use rechargeable batteries.

1.3 When the unit is powered on by pressing the power button shown, the LEDs will indicate the battery status. Good battery power level is indicated by a row of green LEDs. Low battery power level is indicated by a single red flashing LED.

The headphones supplied will indicate lower power level when the LED is red. At an extremely low power level the LED will flash twice every 30 seconds and an audible alarm will sound. The headphones will need to be re-charged, see 2.1.



## 2. Charging and Pairing the headphones to the Tmic unit

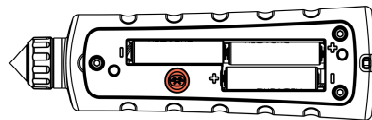
2.1 Ensure that the headphones are fully charged before first use. An initial charge of three hours is required. Insert the headphone charge cable jack into the socket in the headphones and insert the USB terminal into a USB connector of a PC or a USB charging device (A 12V car USB charger is available as an optional part). During charging the red LED on the headphones will be illuminated and will go off when fully charged.

2.2 The Tmic unit comes paired with the headphones in the case.

2.3 Should you wish to re-pair the devices, remove the battery cover as detailed in section 1.1.

2.4 Press the on/off button on the headphones and hold until the LED on the headphones flashes green and red indicating active pairing mode. Now press the Bluetooth button (ⓑ) as located in the diagram above. The Bluetooth LED at the base of the unit will flash red indicating active pairing mode.

2.5 When the Bluetooth devices are paired the LED on the headphones will be flashing green and the LED on the base of the Tmic unit will be steady green. If pairing is unsuccessful the headphones and the Tmic unit will turn off after a short time. Repeat steps 2.3 to 2.5 until devices are paired successfully.



## 3. Basic operational use

3.1 Always use the wrist strap provided when using the Tmic.

Switch the Tmic unit on by briefly pressing the power button.

Turn the headphones on by holding the power button until the LED on the headphones illuminates green. Note: Do not continue to hold the button as the headphones will enter Bluetooth pairing mode, to exit this mode see 3.7 to turn the headphones off.

3.2 Carefully place and hold the sensor tip on the surface you wish to listen to.

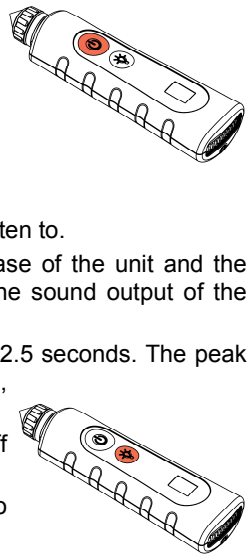
3.3 The noise level will be displayed as a row of red LEDs on the base of the unit and the sound will be heard through the headphones. To mute and unmute the sound output of the Tmic, press the Torch button (☼) briefly.

3.4 To store the peak noise level, press and hold the power button for 2.5 seconds. The peak level will be indicated by a steady green LED. To clear the stored level, press the power button briefly to return to normal listening mode.

3.5 In poor light conditions, the Torch LED can be switched on and off by pressing the torch button. The Torch LED will turn off after 1 minute.

3.6 To turn off the unit press the power button briefly. The unit will auto power off after a period of 20 minutes of inactivity.

3.7 To turn the headphones off, press and hold the on/off button until a beep is heard and the LED flashes quickly three times. The headphones will automatically turn off approximately 3 minutes after the Tmic if no other button is pressed.



## 4. Sensor Tip Adaptors

4.1 Standard Magnet Coupling

The Tmic unit comes assembled with the standard magnet coupling.

This provides hand free operation when the surface you wish to listen to is magnetic.

4.2 Sensor Cap

For pinpoint surface listening, remove the standard magnet coupling to expose the sensor tip. Attach the plastic sensor cap to protect the sensor screw thread.

4.3 Extension poles

For additional length, the extension poles can be attached to the Tmic unit.

Remove the standard magnet coupling / plastic sensor cap and attach the extension pole magnet coupling.

Affix the extension pole bracket and extension pole end to the extension pole magnet coupling and attach the extension pole middle and tip.

The unit can be used as normal but care being taken with the pointed end of the pole. Ensure that the wrist strap is used when holding the Tmic unit.

4.4 After use, disassemble the components, stow in the case and replace the standard magnet coupling if not fitted.

## 5. Cleaning

5.1 The Tmic unit and headphones can be wiped with a damp cloth. The remaining components can be washed in a mild detergent solution and dried before replacing in the case.